



DE VALK  
YACHT BROKERS



## BENETEAU OCEANIS CLIPPER 42 CC



DE VALK  
YACHT BROKERS

# BENETEAU OCEANIS CLIPPER 42 CC

## VAN DE MAKELAAR

Beneteau Oceanis Clipper 42 CC center cockpit , owners version, offers all you want for long stay and living aboard. An easy to handle sail plan and impressive option list make her a fantastic sailing yacht for a couple with a small family. She has a great living space with an enormous owners cabin and she has been kept in absolute top maintained condition.

*Sofia Iliia-Salvanou*

## SPECIFICATIES

|                   |                           |                      |                        |
|-------------------|---------------------------|----------------------|------------------------|
| <b>Afmetingen</b> | 12.74 x 3.91 x 1.80 (m)   | <b>Bouwer</b>        | BENETEAU               |
| <b>Bouwjaar</b>   | 2005                      | <b>Hutten</b>        | 2                      |
| <b>Materiaal</b>  | Polyester                 | <b>Slaapplaatsen</b> | 6                      |
| <b>Motor(en)</b>  | 1 x YANMAR 4JH3-TE diesel | <b>Pk/Kw</b>         | 75.00 (pk), 55.20 (kw) |
| <b>Vraagprijs</b> | verkocht (BTW )           | <b>Ligplaats</b>     | bij verkoopkantoor     |

## CONTACT

|                |   |                 |                  |
|----------------|---|-----------------|------------------|
| <b>Kantoor</b> | De Valk Corfu   | <b>Telefoon</b> | (+30) 6948681503 |
| <b>Adres</b>   | New Port of Corfu, near Gouvia Marina<br>490 83 Corfu<br>GR | <b>E-mail</b>   | corfu@devalk.nl  |

## DISCLAIMER

Hoewel er uiterste zorg besteed is aan de correctheid, volledigheid en actualiteit van onze informatie kunnen hieraan geen rechten worden ontleend.



## ALGEMEEN

|                       |                                |
|-----------------------|--------------------------------|
| Model                 | BENETEAU OCEANIS CLIPPER 42 CC |
| Type                  | zeiljacht                      |
| Lengte (m)            | 12,74                          |
| Lengte waterlijn (m)  | 11,70                          |
| Breedte (m)           | 3,91                           |
| Diepgang (m)          | 1,80                           |
| Doorvaarhoogte (m)    | 16,15                          |
| Stahoogte (m)         | 1,90                           |
| Bouwjaar              | 2005                           |
| Te waterlating        | 2007                           |
| Gebouwd door          | BENETEAU                       |
| Land                  | Frankrijk                      |
| Ontwerper             | Jean Mari Finot                |
| Waterverplaatsing (t) | 8,96                           |
| Ballast (ton)         | gietijzer met lood 2,5         |
| Bruto tonnage         | 17,5                           |
| CE norm               | B                              |
| Romp materiaal        | polyester                      |
| Romp kleur            | wit                            |
| Rompvorm              | rondspant                      |
| Kiel type             | vin kiel met bulb              |
| Stootlijst            | roestvast staal                |
| Dek materiaal         | polyester                      |
| Afwerking dek         | kunststof teak                 |
| Afwerking opbouw      | anti-slip profiel              |
| Afwerking kuip        | kunststof teak                 |
| Raamlijsten           | aluminium                      |
| Raammateriaal         | perspex                        |
| Dekluik               | LEWMAR                         |
| Patrijspooten         | aluminium                      |



# BENETEAU OCEANIS CLIPPER 42 CC

|                              |                          |
|------------------------------|--------------------------|
| Brandstoftank (liter)        | kunststof                |
| Brandstoftank 2 (liter)      | kunststof                |
| Inhoudsmeter (brandstoftank) | Gauge                    |
| Brandstof dagtank (liter)    | 254                      |
| Drinkwatertank (liter)       | kunststof 500 in 2 tanks |
| Vuilwatertank (liter)        | kunststof 70             |
| Inhoudsmeter (vuilwatertank) | Gauge                    |
| Stuurwiel                    | hydraulisch              |
| Buiten stuurstand            | ja                       |
| Noodhelmstok                 | ja                       |
| Extra info romp              | Excellent condition      |

## ACCOMMODATIE

|                      |                           |
|----------------------|---------------------------|
| Hutten               | 2                         |
| Slaapplaatsen        | 6                         |
| Indeling             | 2 cabins version          |
| Vloer                | hout                      |
| Salon                | ja                        |
| Verwarming           | diesel hete lucht Webasto |
| Kaartentafel         | ja                        |
| Dinette              | ja                        |
| Dinette om te bouwen | ja                        |
| Keuken               | ja                        |
| Aanrechtblad         | Duropal                   |
| Spoelbak             | roestvast staal           |
| Kooktoestel          | gas                       |
| Oven                 | ja                        |
| Koelkast             | ja                        |
| Warmwatersysteem     | 220V                      |
| Waterdruksysteem     | elektrisch                |
| Hand en/of voetpomp  | ja                        |



# BENETEAU OCEANIS CLIPPER 42 CC

|                |                          |
|----------------|--------------------------|
| Kommaliewan    | ja                       |
| Eigenaarshut   | tweepersoonsbed          |
| Lengte bed (m) | 1,90 x 1,60              |
| Kledingkast    | hangend/lades/legplanken |
| Badkamer       | en suite                 |
| Toilet         | en suite                 |
| Toilet Systeem | elektrisch               |
| Wasbak         | in de badkamer           |
| Douche         | en suite                 |
| Gastenhut 1    | tweepersoonsbed          |
| Lengte bed (m) | 1,80                     |
| Kledingkast    | lades en legplanken      |
| Badkamer       | en suite                 |
| Toilet         | en suite                 |
| Toilet systeem | elektrisch               |
| Wasbak         | in de badkamer           |
| Douche         | en suite                 |

## MOTOR(EN)

|                        |         |
|------------------------|---------|
| Aantal motoren         | 1       |
| Merk                   | YANMAR  |
| Type                   | 4JH3-TE |
| Pk                     | 75      |
| kW                     | 55.20   |
| Brandstof              | diesel  |
| Geïnstalleerd in jaar  | 2006    |
| Maximale snelheid (kn) | 9       |
| Kruissnelheid (kn)     | 6       |
| Verbruik (litr/uur)    | 4       |
| Bereik (nm)            | 380     |
| Motoruren              | 1301    |



|                          |  |
|--------------------------|--|
| <b>Koelsysteem motor</b> | indirecte warmtewisselaar                  |
| <b>Aandrijving</b>       | sail-drive                                 |
| <b>Motorbediening</b>    | bowden kabels                              |
| <b>Keerkoppeling</b>     | hydraulisch                                |
| <b>Accu's</b>            | ja   |
| <b>Startaccu</b>         | 100AH                                      |
| <b>Lichtaccu</b>         | 3X140AH 1X Lithium BOS LE300 56AH          |
| <b>Acculader</b>         | Dolphin                                    |
| <b>Omvormer</b>          | Mastervolt 700W                            |
| <b>Zonnecellen</b>       | 4x 100 Watt Flinsolar + Victron MPPT 75/15 |
| <b>Walstroom</b>         | met kabel                                  |

## NAVIGATIE

|                                |   |
|--------------------------------|---|
| <b>Kompas</b>                  | ja                                      |
| <b>Dieptemeter</b>             | ja                                      |
| <b>Dieptemeter/log</b>         | ja                                      |
| <b>Log</b>                     | ja                                      |
| <b>Windmeetset</b>             | ja                                      |
| <b>Marifoon</b>                | ja                                      |
| <b>Autopiloot</b>              | ja                                      |
| <b>Radar</b>                   | ja                                      |
| <b>Radar/GPS/plotter</b>       | Garmin GPSMap 923 xsv + Radar GMR18 HD3 |
| <b>Elektronische kaart(en)</b> | ja                                      |
| <b>Navigatieverlichting</b>    | ja                                      |

## UITRUSTING

|                     |          |
|---------------------|----------|
| <b>Vaste ramen</b>  | ja       |
| <b>Bimini</b>       | ja       |
| <b>Kuip tafel</b>   | ja       |
| <b>Zwemplatform</b> | Foldable |
| <b>Zwemtrap</b>     | ja       |



# BENETEAU OCEANIS CLIPPER 42 CC

|                              |                 |
|------------------------------|-----------------|
| Loopplank                    | ja              |
| Dekdouche                    | ja              |
| Anker                        | ja              |
| Ankerketting                 | 50              |
| Ankerlier                    | handbediend     |
| Ankerlier bij spiegel        | elektrisch      |
| Bijboot                      | ja              |
| Buitenboordmotor             | 2.3 HP Honda    |
| Davits                       | roestvast staal |
| Zeereling                    | roestvast staal |
| Zij-instap in reling         | ja              |
| Reddingsvlot                 | container 2023  |
| Reddingsvlot laatst gekeurd  | 2023            |
| Zwemvesten                   | ja              |
| Joon                         | ja              |
| Veiligheidslijnen op dek     | ja              |
| Trossensnijder               | ja              |
| Stootkussens                 | ja              |
| Landvasten                   | ja              |
| Reserve onderdelen           | ja              |
| Gereedschap                  | ja              |
| Alarm systeem                | ja              |
| Radio-cd speler              | ja              |
| Kuipspeakers                 | ja              |
| Speakers in salon            | ja              |
| Klok - barometer             | ja              |
| Brandblusser                 | ja              |
| Brandblusser in motorkamer   | New             |
| Automatisch brandblussysteem | ja              |

## TUIGAGE



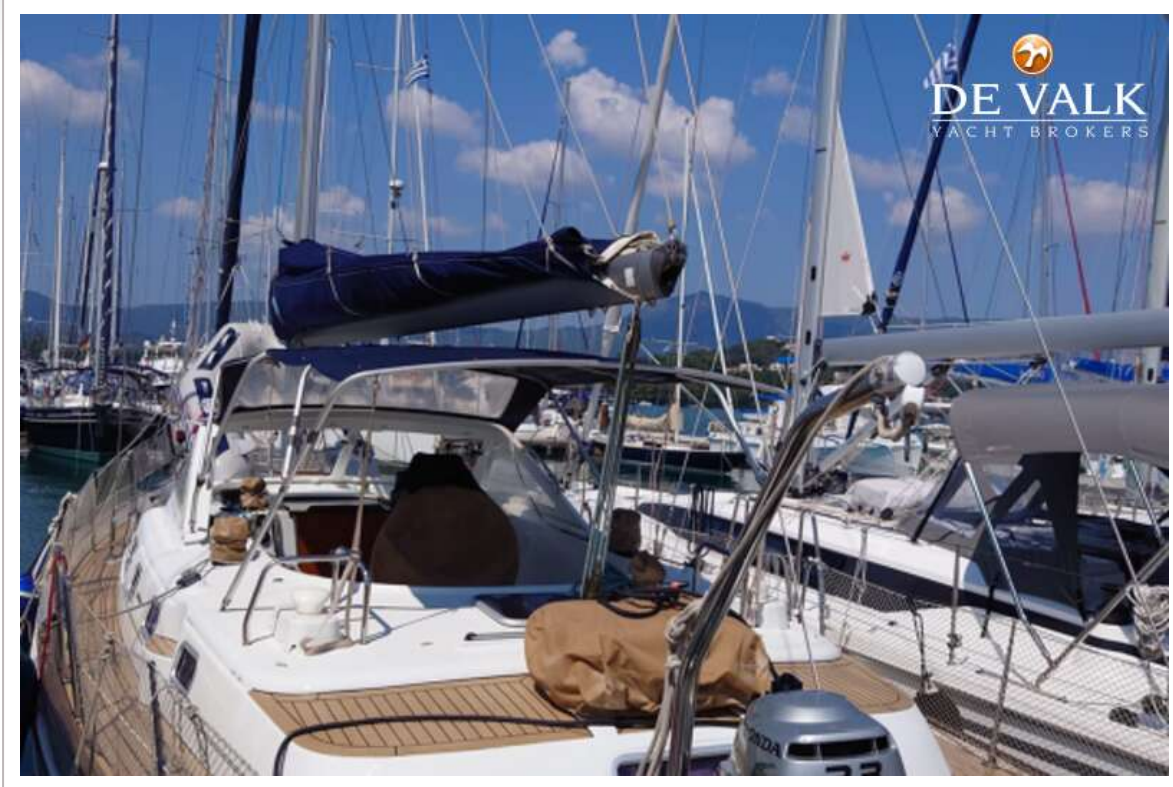
|                |           |
|----------------|-----------|
| Tuigage        | ja        |
| Standaard want | ja        |
| Materiaal mast | aluminium |
| Zalingen       | ja        |
| Grootzeil      | ja        |
| Genua          | Furling   |



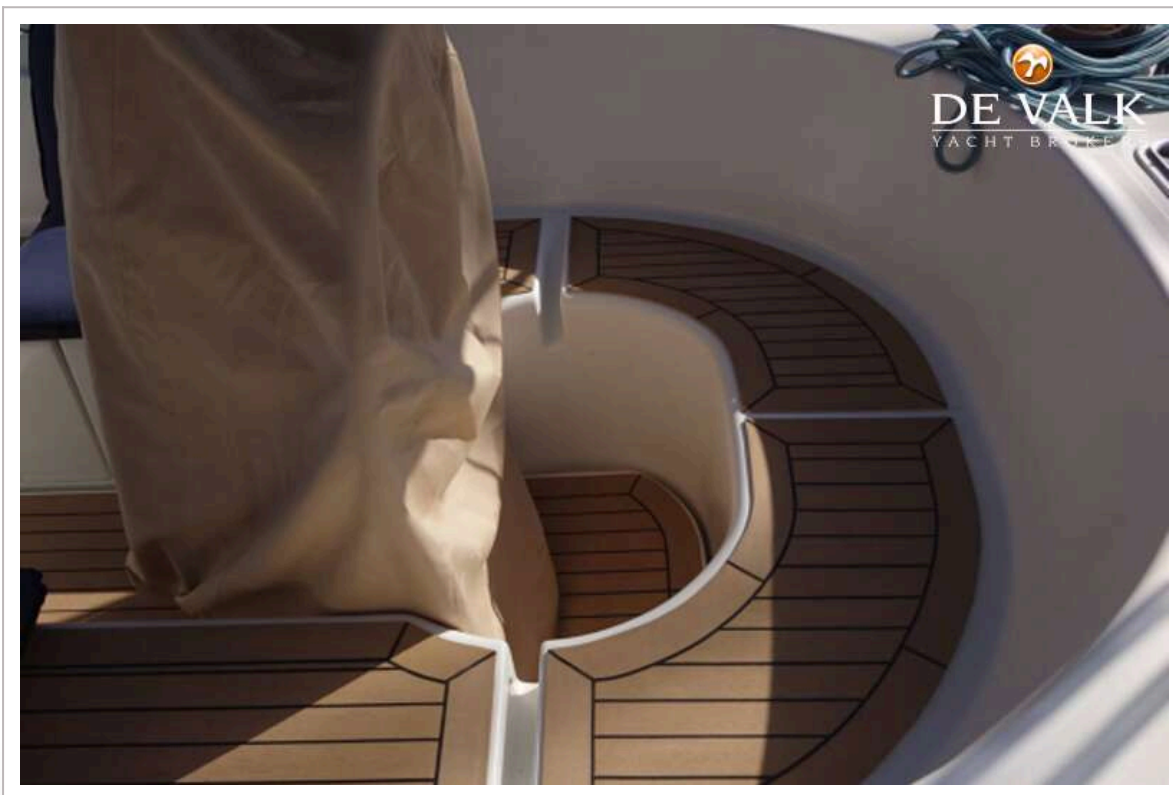
# BENETEAU OCEANIS CLIPPER 42 CC



# BENETEAU OCEANIS CLIPPER 42 CC



# BENETEAU OCEANIS CLIPPER 42 CC



# BENETEAU OCEANIS CLIPPER 42 CC



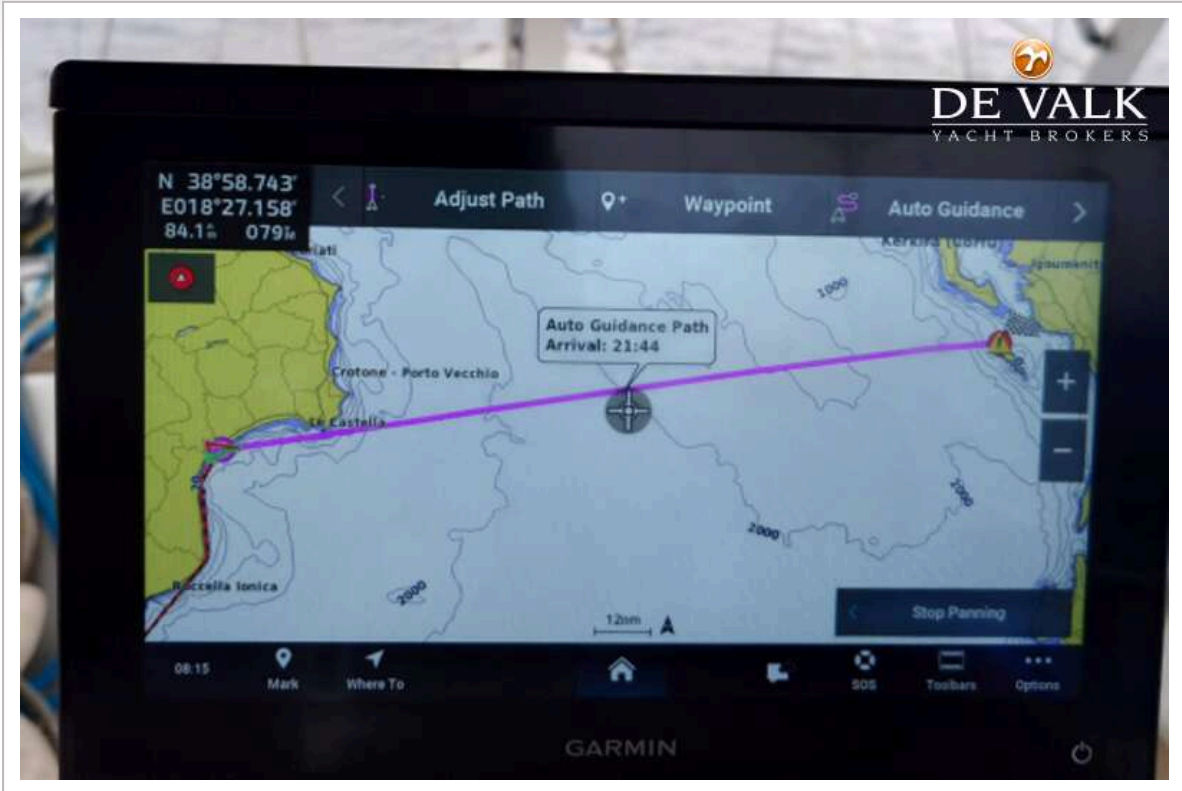
# BENETEAU OCEANIS CLIPPER 42 CC



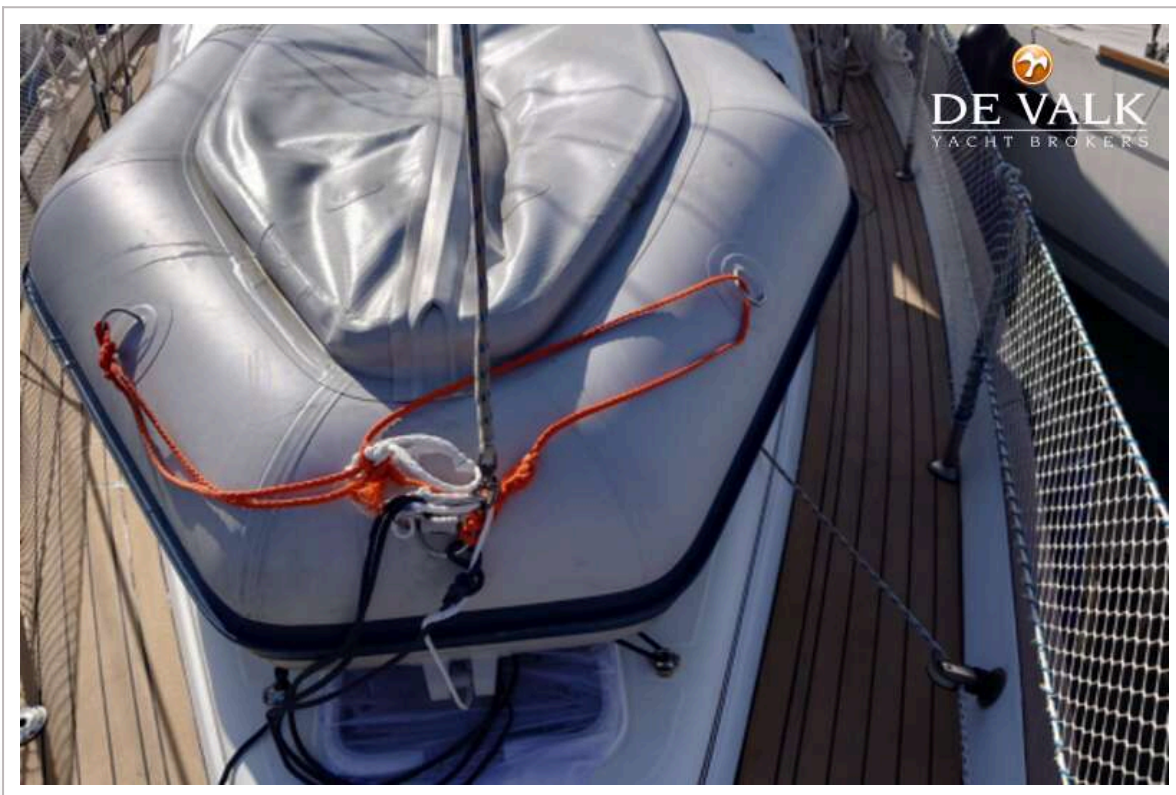
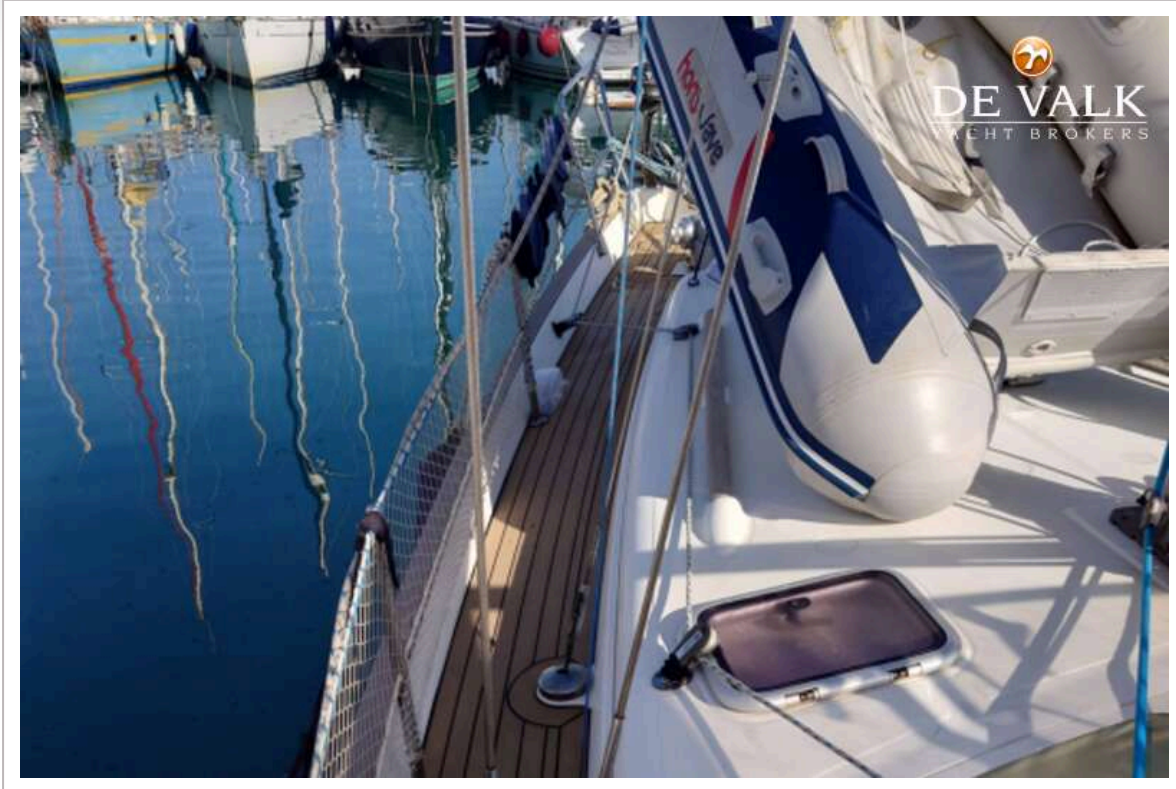
# BENETEAU OCEANIS CLIPPER 42 CC



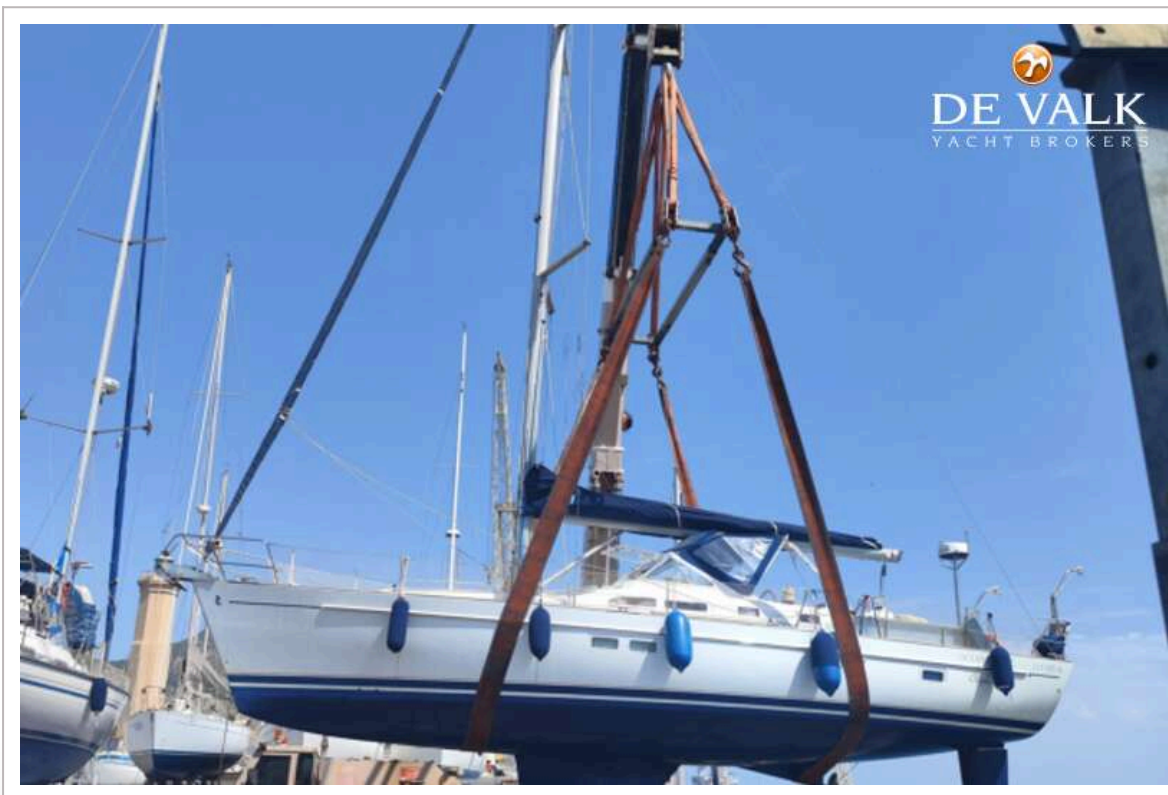
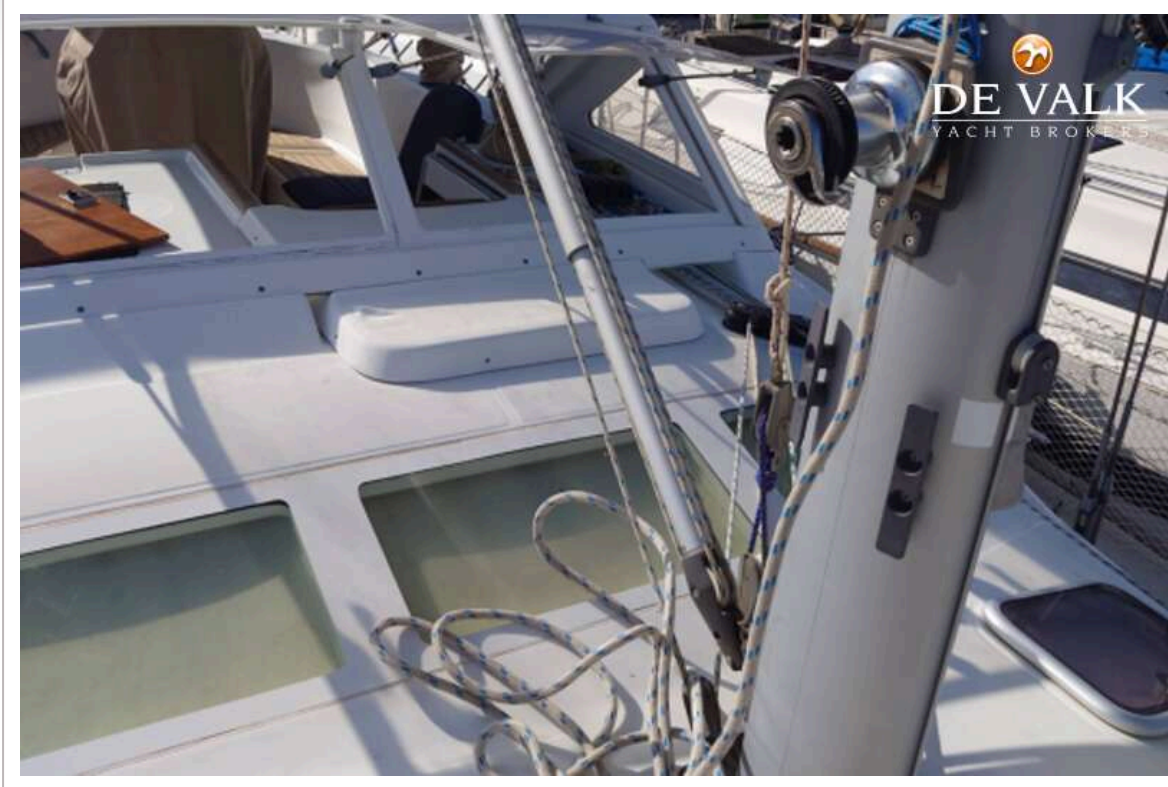
# BENETEAU OCEANIS CLIPPER 42 CC



# BENETEAU OCEANIS CLIPPER 42 CC



# BENETEAU OCEANIS CLIPPER 42 CC



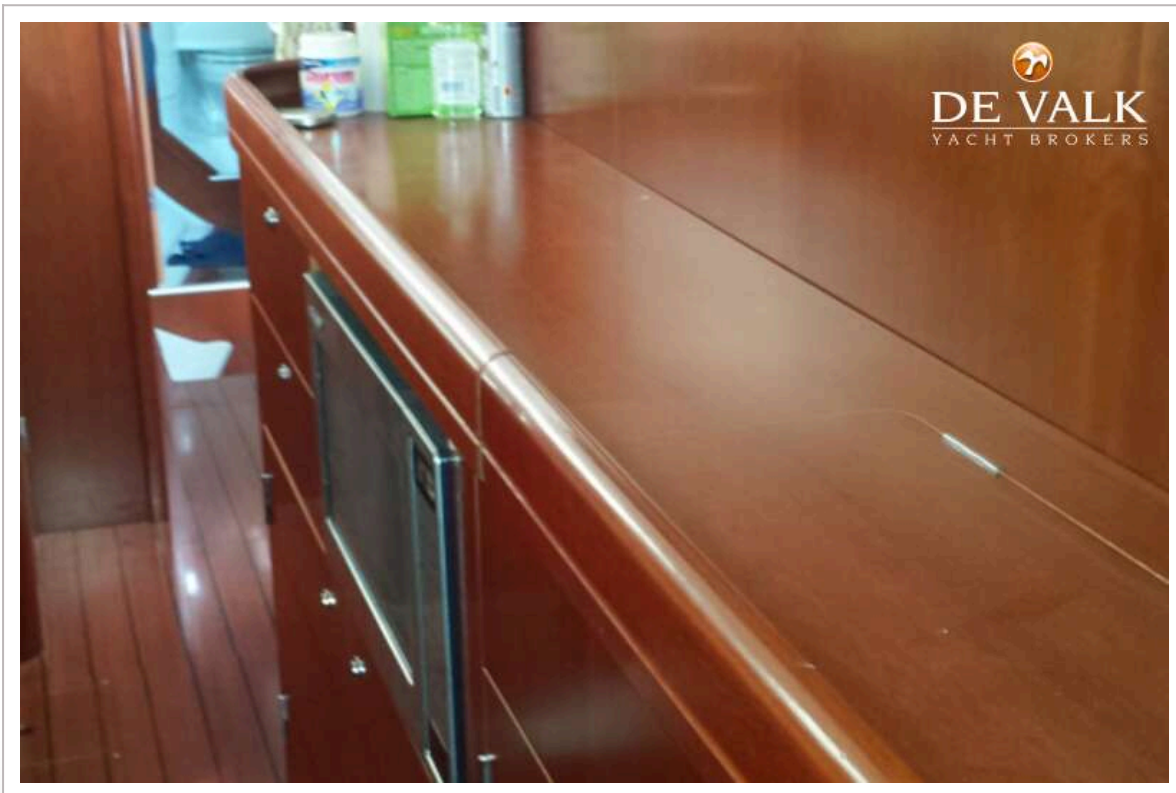
# BENETEAU OCEANIS CLIPPER 42 CC



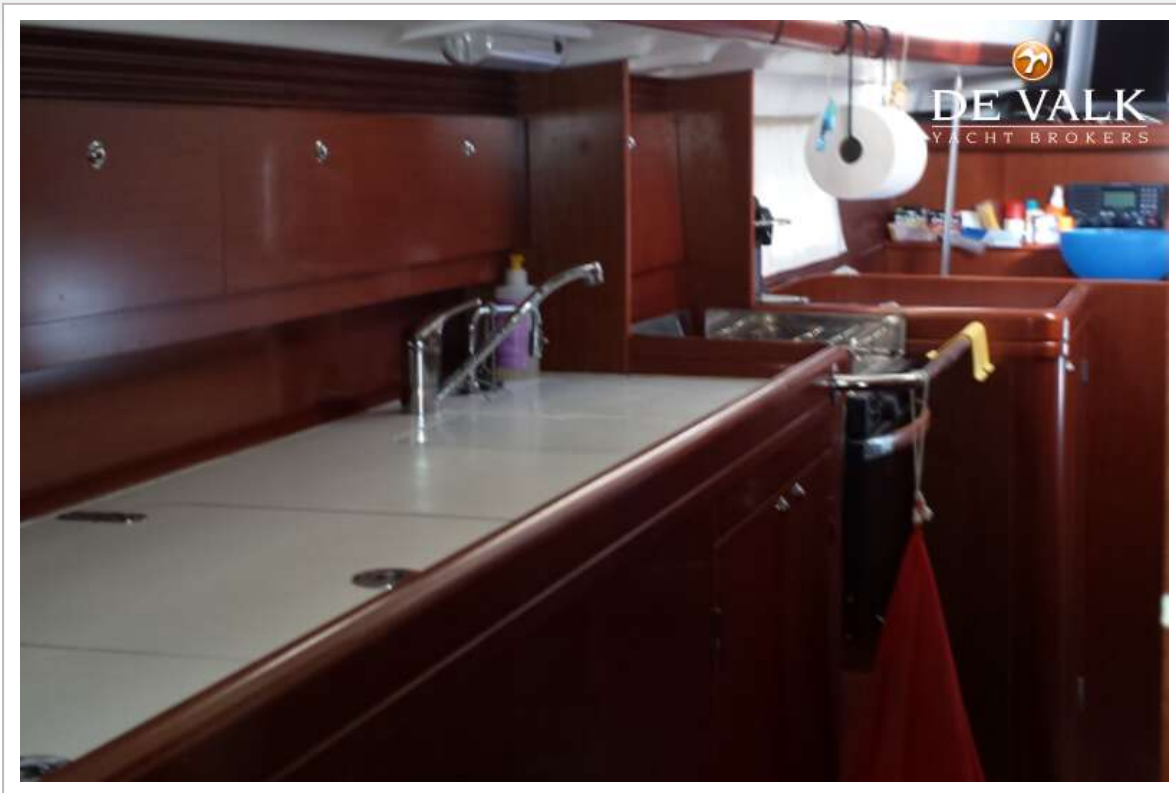
# BENETEAU OCEANIS CLIPPER 42 CC



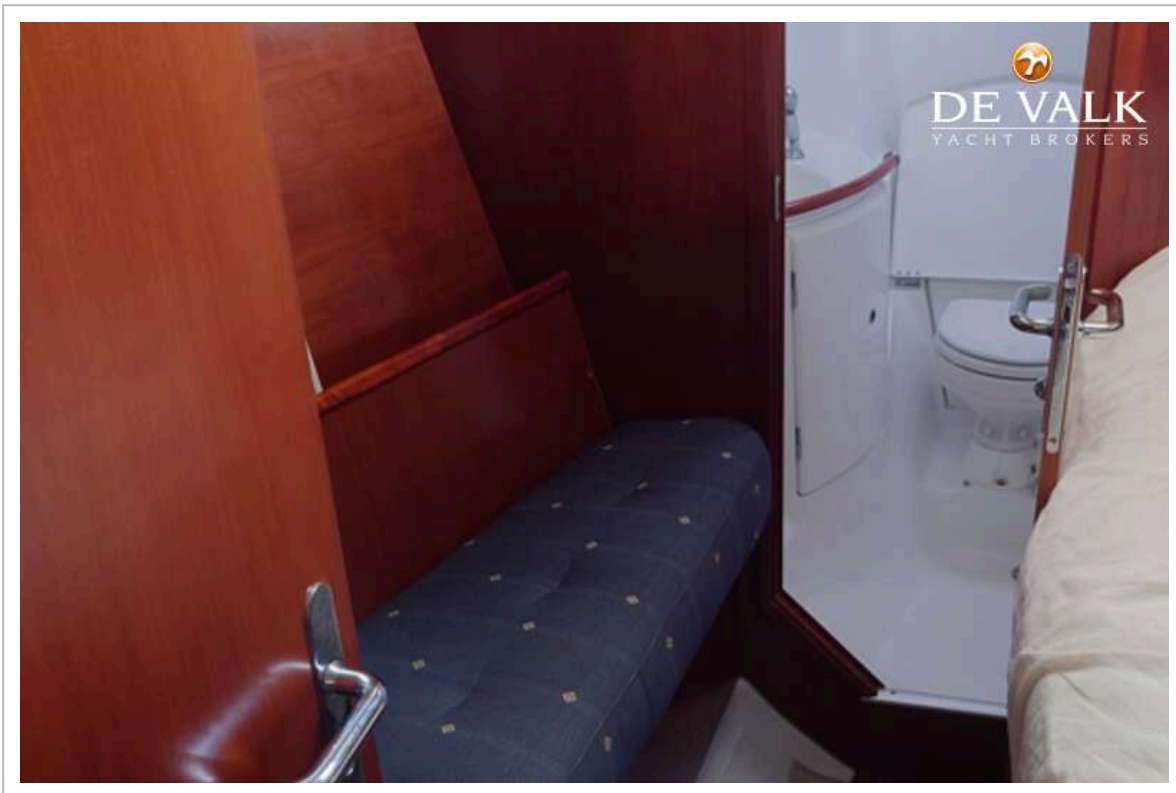
# BENETEAU OCEANIS CLIPPER 42 CC



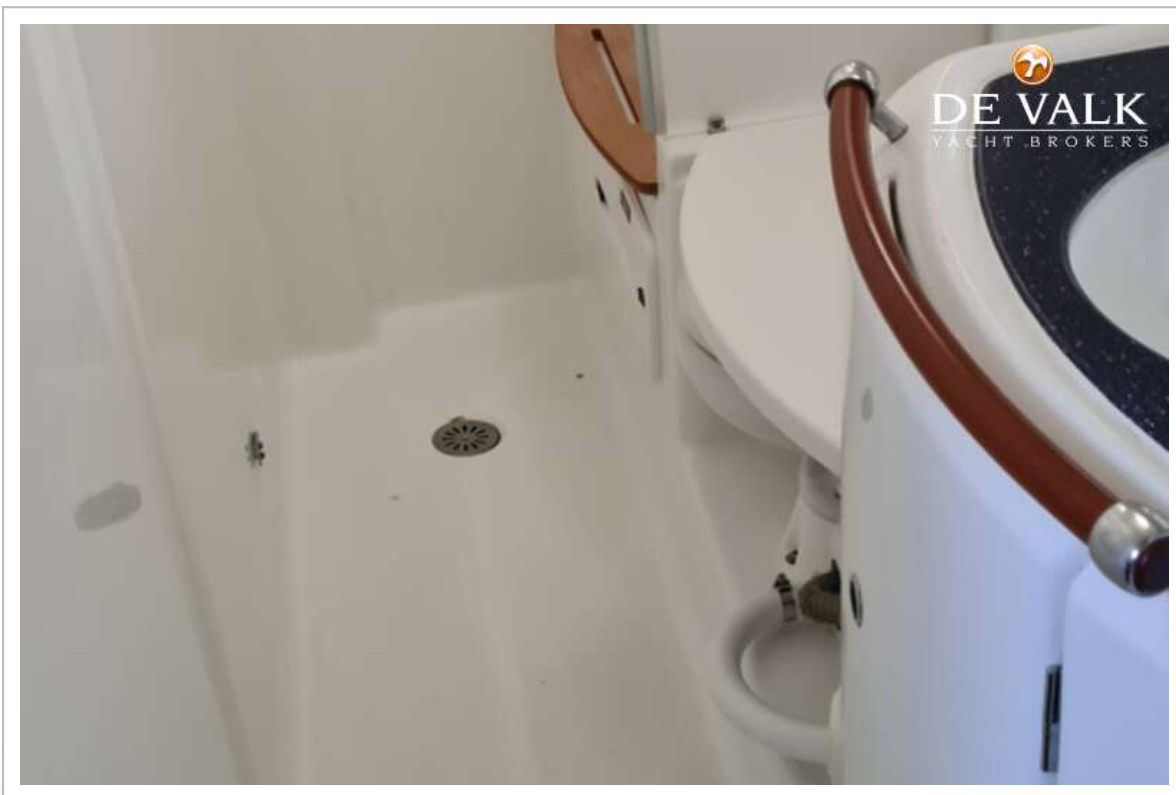
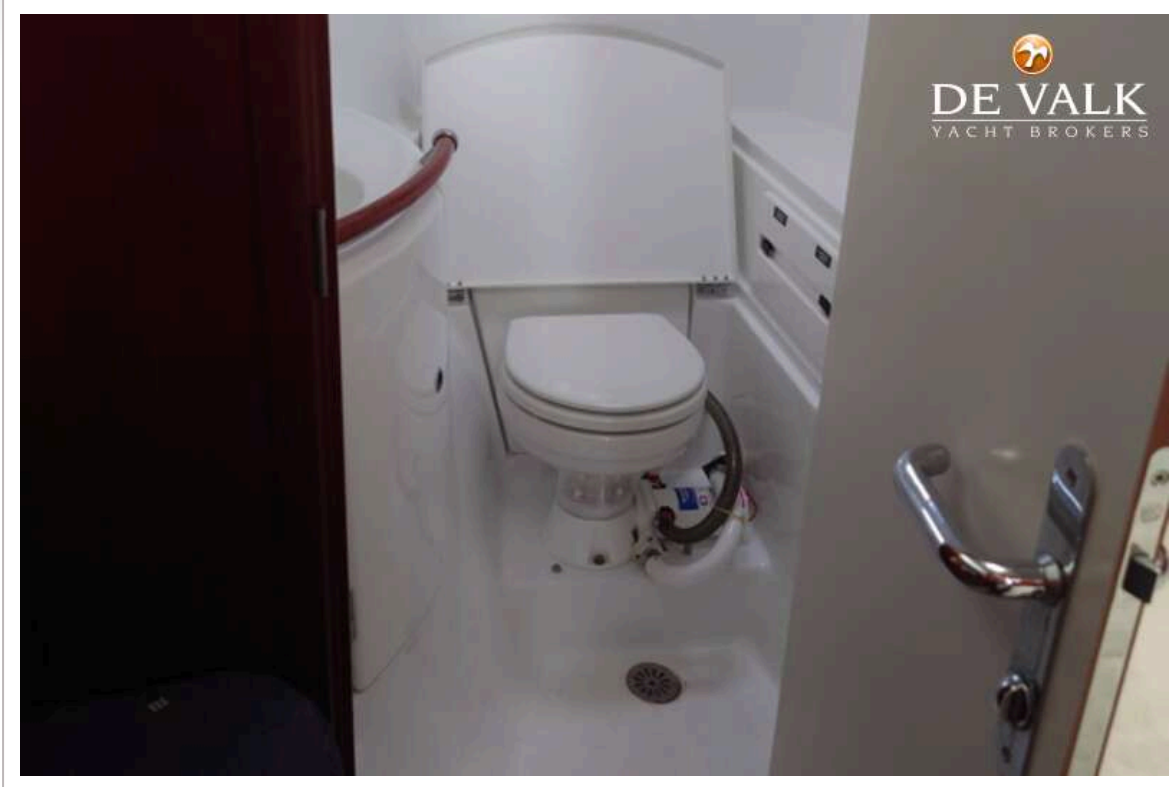
# BENETEAU OCEANIS CLIPPER 42 CC



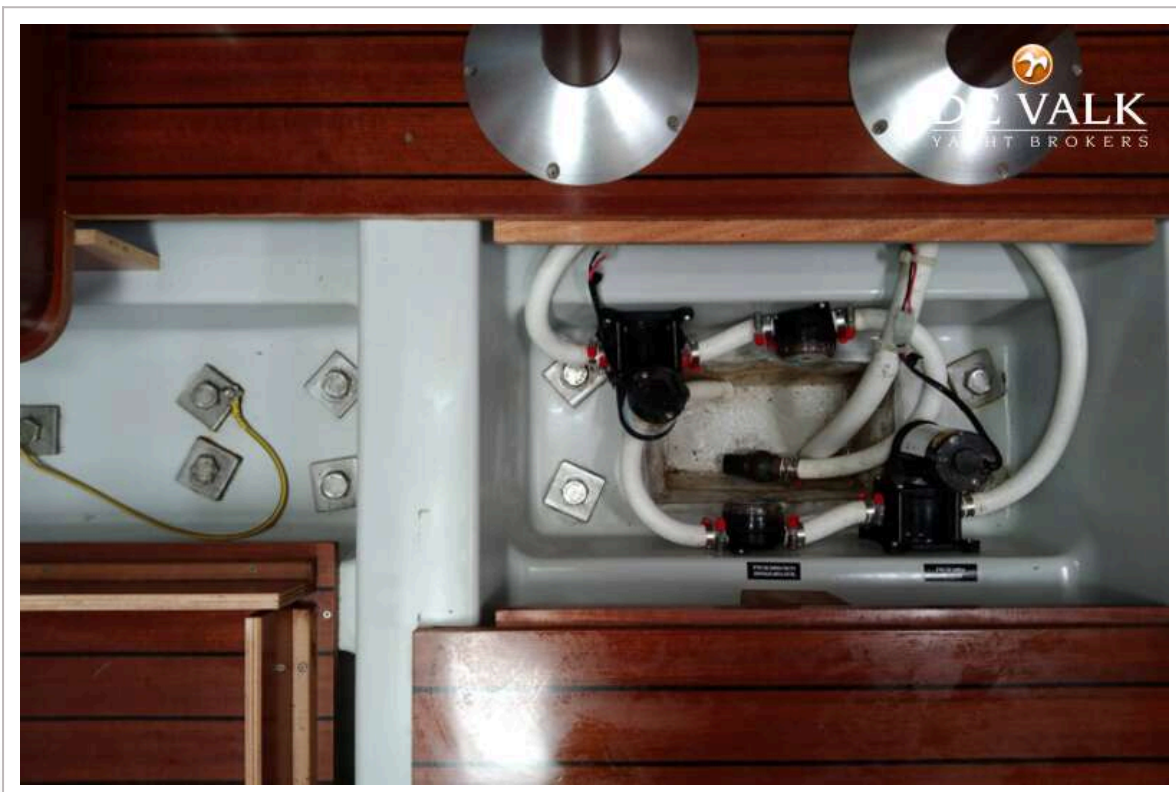
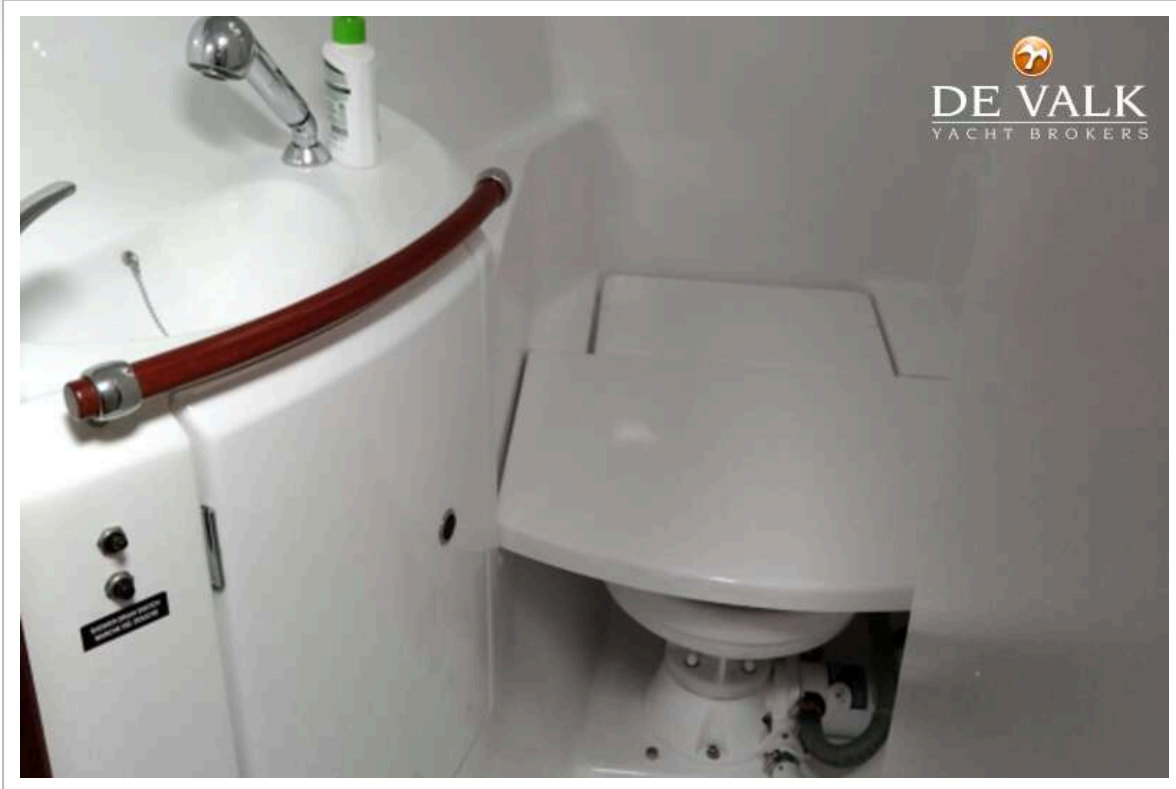
# BENETEAU OCEANIS CLIPPER 42 CC



# BENETEAU OCEANIS CLIPPER 42 CC



# BENETEAU OCEANIS CLIPPER 42 CC



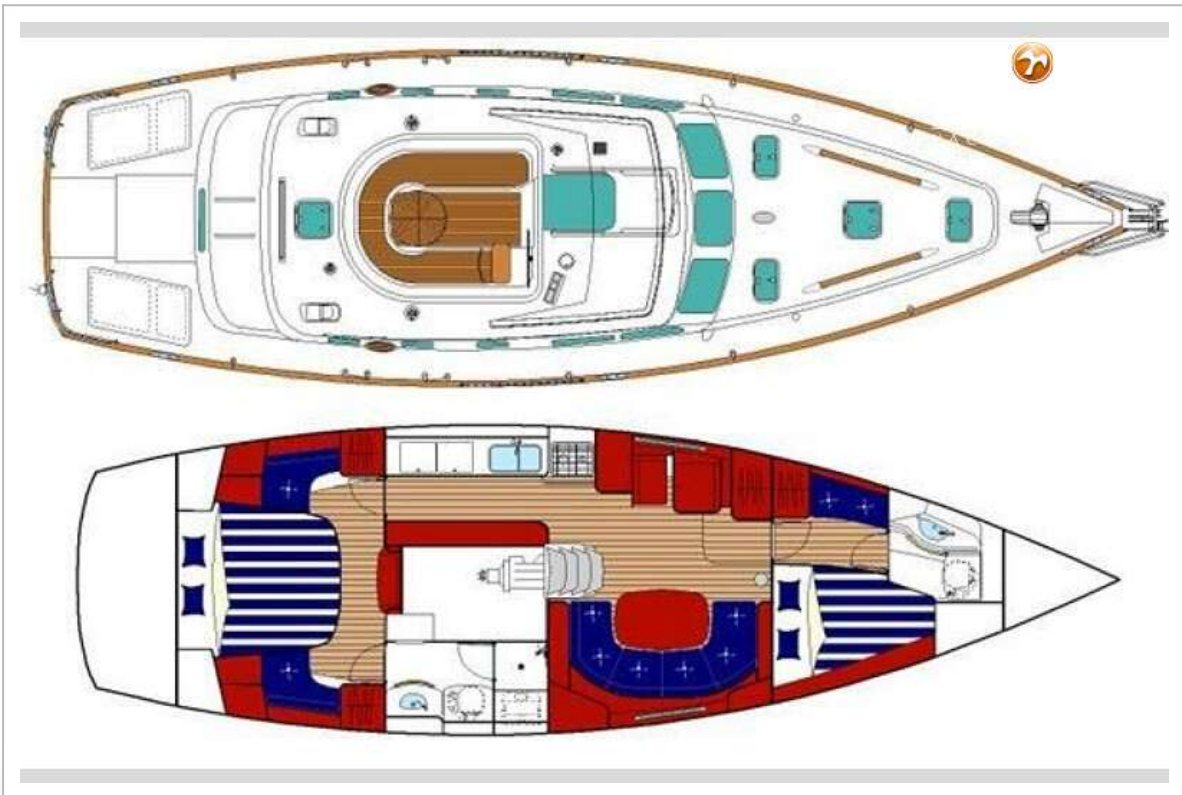
# BENETEAU OCEANIS CLIPPER 42 CC



# BENETEAU OCEANIS CLIPPER 42 CC



# BENETEAU OCEANIS CLIPPER 42 CC



# BENETEAU OCEANIS CLIPPER 42 CC

## Océanis Clipper 42 CC

|   |                            |
|---|----------------------------|
| Design / Architectes                                      | ..... Groupe Finot         |
| Length overall / Longueur hors tout                       | ..... 13.23 m              |
| Hull length / Longueur coque (LIP*)                       | ..... 12.74 m              |
| LWL / Longueur flottaison                                 | ..... 11.07 m              |
| Hull beam / Largeur de coque (BB*)                        | ..... 3.91 m               |
| Light displacement / Déplacement lège (MLC*)              | ..... 8960 kg approx.      |
| Standard draft / Tirant d'eau standard                    | ..... 1.80 m               |
| Sail area / Surface de voilure                            | ..... 81.60 m <sup>2</sup> |
| Mainsail area / Surface GV                                | ..... 40.81 m <sup>2</sup> |
| Genoa area / Surface gînois                               | ..... 48 m <sup>2</sup>    |
| Fuel capacity / Réservoir carburant                       | ..... 240 L                |
| Water capacity / Réservoir d'eau                          | ..... 543 L                |
| Max. engine power offered / Puissance moteur max. proposé | ..... 76 cv                |
| CE Certification  | ..... A6/B8/C10            |

\* According to / selon ISO 8666.

## PRINCIPAL SPECIFICATIONS

- Design: Groupe Finot.
- Length overall: 13.23 m.
- Hull length: 12.74 m.
- Hull beam: 3.91 m.
- Light displacement: 8960 Kg.
- Draught (standard deep keel): 1.80 m.
- Air draught: 16.15 m.
- Fuel capacity: 240 L.
- Fresh water capacity: 543 L.
- Maximum engine power: 82 HP.
- Gross tonnage: 17.05 T.
- CE Certification: A6 / B8 / C10.

## SAIL AREA

Designed sail area: **88.81 m<sup>2</sup>**

- Mainsail: 40.81 m<sup>2</sup>.
- Genoa: 48 m<sup>2</sup>.
- Spinnaker: 106.63 m<sup>2</sup>.

## ON DECK

- 18 / 12 M.O s/s stem head fitting with 2 fairleads and rollers.
- 18 / 12 M.O s/s open pulpit with navigation lights.
- Stainless steel stern pulpits with life buoy support and teak outboard engine support closed by two covered guard rails.
- Stern pulpits with removable seats.
- LEROY SOMMER 1000 W up/down electric windlass.
- Self-draining anchor locker with 2 opening hatches and bitter end eye bolt.
- Teak capped bulwark surrounding the deck.
- 6 anodised aluminium mooring cleats with s/s protection on bulwark.
- Forestay chainplate with slats on the stemhead fitting.
- 2 s/s lower shroud chainplates, 2 s/s streamlined shroud chainplates.
- Anodised aluminium fuel and water fillers.
- 18 / 12 M.O s/s stanchions with two sets of covered s/s lifelines.

## SAIL PLAN

- I: 16.49 m.
- J: 4.37 m.
- P: 12.7 m.
- E: 5.79 m.
- LP: 6.12 m.

## TECHNICAL SCHEDULE

- HULL -


The hull is single-skinned GRP construction. Reinforced points (keel, rudder, chain plates, hull-deck joint) help to strengthen the structure.

A single-skinned structural inner moulding is bonded and laminated to the hull. Its structural role is important as it takes and absorbs the stresses at pressure points (shroud chain plate tie rods, keel, rudder etc.) and spreads any loads **guaranteeing reduced strain on the hull.**

The surface material of the inner moulding makes **cleaning easier** and provides a **better finish.**

The standard hull colour is white with blue and silver livery. Steel Blue is available as an option.





**- CENTRAL COCKPIT -**

- GRP canopy with opening windscreen in front of helmsman. Built-in companionway sprayhood.
- 1 HARKEN 40.2 STC halyard and manoeuvre winch
- 5 clutches for halyards and manoeuvres.
- 2 x HARKEN 46.2 STC genoa sheet winches.
- Hydraulic wheel mounted on forward starboard bulkhead.
- Leather covered s/s wheel.
- Control panel on cockpit bench seat facade.
- Engine control on bulkhead.
- Instruments panel.
- 12 V plug and mobile lamp.
- Teak laid bench seat.
- Removable cockpit teak laid hatch giving access to the engine room.
- 1 winch handle box.
- Emergency tiller.
- Adjustable helmsman seat.

**- SPARS / RIGGING -**

- Anodised aluminium deck stepped mast.
- 2 spreaders angled aft (20°).
- Spinnaker pole track on the mast.
- Partner fitting with articulated blocks to return halyards and reef lines to cockpit.
- Stainless steel wire rigging for shrouds, lower shrouds, forestay and twin backstays.
- Low stretch main halyard and genoa halyard.
- 2 automatic reefing lines.
- 1 mainsheet with blocks, 2 genoa sheets.
- 1 genoa furler with control line led back to cockpit.
- 1 boom topping lift.
- Rigid boom vang.

**- SAILS -**

- 1 semi batten mainsail with automatic reef system.
- "Easy bag" mainsail bag with lazy jacks.
- One 140% furling genoa with anti-UV protection strip.

**INTERIOR ACCOMMODATION**

**- COMPANIONWAY -**

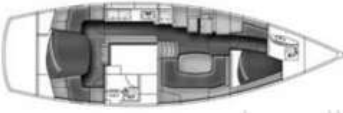
- 15 mm Altuglass sliding hatch.
- Twin varnished wooden companionway panels.
- 2 handrails.
- 4 moulded wood steps, integrated to the opening engine cover.
- Opening companionway panel on struts for access to engine compartment.


**- SALOON TO PORT -**

- Nav station.
- Chart table with partitioned storage place and moulded wood fiddle.
- Storage place.
- Panel for on board electronics.
- Tools drawer.
- Navigator's seat with locker.
- 1 Lewmar 688 x 175 fixed porthole with curtain.
- 1 920 x 208 hull fixed porthole with curtain.
- Large three-parts panoramic panel with rigid blinds.
- Lewmar 457 x 247 opening hatch with blind on coach roof.
- Halogen lamp.
- Wooden hull inner planking.

**- SALOON TO STARTBOARD -**

- Sliding saloon table with aluminium base.
- U shaped settee with cushions and backrests.
- Shelves, cupboards, bar furniture.
- Wooden hull inner planking.
- Storage lockers.
- Halogen lamp with independent switches.
- 1 Fixed hull 920 X 208 porthole with curtain.
- 1 Lewmar 627 X 171 opening porthole with curtain.
- 1 Lewmar 457 X 247 opening hatch with blind on coach roof.
- 1 Lewmar 688 X 175 fixed porthole with curtain.





**- GALLEY IN PORT GANGWAY -**

- Work surface with moulded wooden fiddle.
- Twin rectangular s/s sinks with chopping board.
- Hot/cold mixed tap.
- Foot pump for ice box discharge and sea water.
- Rubbish bin.
- Vegetable baskets.
- 220 V micro wave oven.
- 2 burners gimbaled s/s stove with protection bar.
- Cutlery drawer.
- Shelves and cupboards along side of the hull.
- Crockery shelf on starboard.
- 12 V, 170 L electric fridge with storage baskets.
- Halogen lamps with independent switches.
- Dust box in floor.
- 1 Lewmar 627 X 171 opening porthole with curtain.
- 2 Lewmar 347 X 171 opening portholes with curtains.

**- AFT OWNER'S CABIN -**

- 2.00 m x 1.50 m double berth with 120 mm thick mattress.
- 2 hanging lockers.
- Cupboards, shelves.
- Storage lockers.
- Seat with cushion on each side of the bed.
- Vanity/desk with mirror.
- Padded deck head lining.
- 2 Lewmar 347 x 171 opening portholes with curtains.
- Two 340 x 128 fixed hull portholes with curtains.
- 1 Lewmar 627 x 171 opening porthole with curtain aft.
- 1 Lewmar 507 x 392 opening hatch with blind on coach roof.
- Permanent ventilation through dorade vent.
- Halogen lamp and reading lights.

**- AFT OWNER'S CABIN HEAD COMPARTMENT -**

- One piece moulded for water tightness and easy cleaning.
- Marine toilet with hinged polyester cover.
- Polyester sink with hot/cold water mixer tap.
- Mirrors, cupboards, washing accessories.
- Shower with hot/cold water mixer tap.
- Electric pump for direct evacuation of used shower water into the sea.
- 2 Lewmar 347 x 171 opening portholes with curtains.
- Halogen and fluorescent lamps

**- FORWARD CABIN -**

- 1.95 m x 1.35 m double berth with mattress.
- Drawer and locker under berth.
- Hanging locker with seat on port.
- Lateral wooden inner planking.
- 1 Lewmar 507 x 392 opening hatch with blind on coach roof.
- Halogen lamp and reading lights.

**- FORWARD HEAD COMPARTMENT -**

- One piece moulded, equally equipped than the owner's head compartment.
- Opening 527 x 317 mm hatch with blind.

**ENGINE EQUIPMENT\***

- Engine mounting built into the inner mould.
- Engine compartment insulated with 40 mm foam.
- Lighting to engine compartment.
- Space for generator in engine compartment.
- Filter with sediment reservoir to fuel system.
- Propeller shaft protected by a skeg.
- Fixed three-blade propeller.
- 240 L fuel tank.

\* See price list

28/10/2005 code Beneteau 068350 ANG

**ELECTRICAL CIRCUIT**

- 2 x 140 Amp service batteries.
- 1 x 110 Amp battery.
- 110 V / 220 V battery charger 20 Amp.
- 220 V shore power.
- 5 x 220 V sockets in saloon and galley.
- 12 V/16 functions electrical panel and one 12 V plug.
- Navigation lights.
- Mooring light.
- Deck spot.

**WATER CIRCUIT**

- One manual bilge pump in cockpit.
- One electric bilge pump.
- 2 Water tanks. (total capacity: 580 L approx).
- Cocks for tank selection.
- 42 L water heater.
- Water pump with expansion bottle.
- Pressurised fresh water unit with compression tank.





## OCEANIS Clipper 42 CC



### GAS CIRCUIT

- Locker for two gas bottles with air vent (conforms to US standards).

### MISCELLANEOUS

- Maintenance kit.
- Owner's manual and user's guide.
- Owner's briefcase.
- 2 winch handles.

### PACKS

#### - YACHT CLUB PACK -

- HARKEN 40.2 STCEH / 40.2 STC electric winch to port.
- Hot and cold cockpit shower.
- Waterproof cockpit speakers.
- Ground tackle: 20 Kg Danforth anchor, 32 m chain and 48 m warp.
- Mooring: 4 mooring warps and 6 fenders.
- 8 place settings.

#### - FI ELECTRONICS PACK -

- On steering wheel console:
  - ST60 wind instrument linked to masthead windvane anemometer with cable and junction box at foot of mast.
  - Raymarine ST60 Tridata instrument (linked to log and depth sounder transducers).
  - GPS plotter with C80LCD 8.4" multifunction colour screen compatible with Navionics Gold cartography.
  - Raymarine ST 6001 autopilot plus LSRV2.

#### - ELECTRONICS OPTIONS NOT INCLUDED IN PACK -

- Smart Controller autopilot remote control.
- PC Interface.
- Gyro compass sensor.
- Radar (radome only).

#### OTHER OPTIONS AVAILABLE

- Steel blue hull.
- Teak side decks.
- Spinnaker gear.
- In-mast furling.
- Scaysail furling gear with sail.
- Hydraulic gangway with remote control.
- Steering wheel on pivoting column.
- Bow thruster.
- Sun canopy with canopy panel.
- Cockpit cushions.
- Deck washdown pump in chain locker.

- Heating.
- Air conditioning.
- Supplementary battery and battery charger.
- Generator.
- Hob and oven with grill.
- 17" colour TV and radio/ DVD MP3 player.
- Double berth in saloon.
- Laminated soles.
- Windex windvane.
- Electric windlass control in cockpit.
- Rigid WC holding tanks.

