



DE VALK  
YACHT BROKERS



## BAGLIETTO 120



DE VALK  
YACHT BROKERS

## VAN DE MAKELAAR

Yacht designed by the famous architect Stefano Righini & built by the renowned Italian shipbuilder Baglietto. She can accommodate up to 12 guests in 6 spacious & elegant cabins with a layout comprising of a master suite, one double cabin, two twin cabins and two single cabins. The bed configuration includes 2 doubles, 6 singles and 4 pullmans. She is also capable of carrying up to 6 crew. Built with an aluminium hull she comfortably cruises at 17 knots, reaches max speed of 30 knots & has a range of up to 772 Nm from her 25,000 Lt Fuel tank at 24kt speed.

*Sofia Iliia-Salvanou*

## SPECIFICATIES

|                   |                                |                      |                                  |
|-------------------|--------------------------------|----------------------|----------------------------------|
| <b>Afmetingen</b> | 37.00 x 7.60 x 2.35 (m)        | <b>Bouwer</b>        | BAGLIETTO                        |
| <b>Bouwjaar</b>   | 1987                           | <b>Hutten</b>        | 6                                |
| <b>Materiaal</b>  | Aluminium                      | <b>Slaapplaatsen</b> | 12                               |
| <b>Motor(en)</b>  | 2 x MTU 12V396TB94 diesel      | <b>Pk/Kw</b>         | 2 x 2,135.00 (pk), 1,571.36 (kw) |
| <b>Vraagprijs</b> | € 1.100.000 (BTW Niet betaald) | <b>Ligplaats</b>     | elders / niet bij verkoopkantoor |

## CONTACT

|                |   |                 |                  |
|----------------|---|-----------------|------------------|
| <b>Kantoor</b> | De Valk Corfu   | <b>Telefoon</b> | (+30) 6948681503 |
| <b>Adres</b>   | New Port of Corfu, near Gouvia Marina<br>490 83 Corfu<br>GR | <b>E-mail</b>   | corfu@devalk.nl  |

## DISCLAIMER

Hoewel er uiterste zorg besteed is aan de correctheid, volledigheid en actualiteit van onze informatie kunnen hieraan geen rechten worden ontleend.



## ALGEMEEN

|                               |                 |
|-------------------------------|-----------------|
| Model                         | BAGLIETTO 120   |
| Type                          | motorjacht      |
| Lengte (m)                    | 37,00           |
| Breedte (m)                   | 7,60            |
| Diepgang (m)                  | 2,35            |
| Bouwjaar                      | 1987            |
| Gebouwd door                  | BAGLIETTO       |
| Land                          | Italië          |
| Ontwerper                     | Stefano Righini |
| Bruto tonnage                 | 149 T           |
| Romp materiaal                | aluminium       |
| Romp kleur                    | wit             |
| Materiaal opbouw              | aluminium       |
| Dek materiaal                 | aluminium       |
| Afwerking dek                 | teak            |
| Afwerking opbouw              | teak            |
| Afwerking kuip                | teak            |
| Antifouling (jaar)            | 2023            |
| Dekluik                       | ja              |
| Patrijspoorten                | ja              |
| Flybridge                     | ja              |
| Radarbeugel                   | ja              |
| Brandstoftank (liter)         | 25.000          |
| Inhoudsmeter (brandstoftank)  | ja              |
| Drinkwatertank (liter)        | ja              |
| Inhoudsmeter (drinkwatertank) | ja              |
| Vuilwatertank (liter)         | ja              |
| Inhoudsmeter (vuilwatertank)  | ja              |
| Grijswatertank (liter)        | ja              |
| Inhoudsmeter (grijswatertank) | ja              |



|                        |               |
|------------------------|---------------|
| Stuurwiel              | ja            |
| Binnen stuurstand      | ja            |
| Stuurwiel op flybridge | ja            |
| Noodhelmstok           | ja            |
| Extra info             | Refitted 2022 |

## ACCOMMODATIE

|                           |                     |
|---------------------------|---------------------|
| Hutten                    | 6                   |
| Slaapplaatsen             | 12                  |
| Bemanningshut             | ja                  |
| Bemanning slaapplaatsen   | 6                   |
| Achterdek                 | ja                  |
| Salon                     | ja                  |
| Verwarming                | ja                  |
| Airco                     | ja                  |
| Navigatie ruimte          | ja                  |
| Kaartentafel              | ja                  |
| Eetkamer                  | Table for 16 guests |
| Dinette                   | ja                  |
| Schuifdeur naar achterdek | ja                  |
| Keuken                    | ja                  |
| Aanrechtblad              | ja                  |
| Spoelbak                  | ja                  |
| Kooktoestel               | ja                  |
| Oven                      | ja                  |
| Afzuigkap                 | ja                  |
| Magnetron                 | ja                  |
| Koelkast                  | X 2 (WALK IN TYPE)  |
| Vriezer                   | ja                  |
| Wijnkoeler                | ja                  |
| Warmwatersysteem          | ja                  |



|                   |                    |
|-------------------|--------------------|
| Waterdruksysteem  | ja                 |
| Vaatwasser        | ja                 |
| Ijsblokjesmachine | X 2                |
| Koffiezetapparaat | ja                 |
| Kommaliewan       | ja                 |
| Eigenaarshut      | tweepersoonsbed    |
| Kledingkast       | ja                 |
| Badkamer          | en suite           |
| Toilet            | en suite           |
| Toilet Systeem    | elektrisch         |
| Wasbak            | in de badkamer     |
| Douche            | en suite           |
| Gastenhut 1       | tweepersoonsbed    |
| Kledingkast       | ja                 |
| Badkamer          | en suite           |
| Toilet            | en suite           |
| Toilet systeem    | elektrisch         |
| Wasbak            | in de badkamer     |
| Douche            | en suite           |
| Gastenhut 2       | twee enkele bedden |
| Kleerkast         | ja                 |
| Badkamer          | en suite           |
| Toilet            | en suite           |
| Toilet systeem    | elektrisch         |
| Wasbak            | in de badkamer     |
| Douche            | en suite           |
| Gastenhut 3       | twee enkele bedden |
| Kleerkast         | ja                 |
| Badkamer          | ja                 |
| Toilet            | en suite           |
| Toilet systeem    | elektrisch         |
| Wasbak            | in de badkamer     |



|                      |                |
|----------------------|----------------|
| Douche               | en suite       |
| Gastenhut 4          | eenpersoonsbed |
| Kleerkast            | ja             |
| Badkmaer             | ja             |
| Toilet               | en suite       |
| Toilet systeem       | elektrisch     |
| Wasbak               | in de badkamer |
| Douche               | en suite       |
| Bemanningshut(ten)   | 6 berthes      |
| Badkamer (bemanning) | ja             |
| Toilet (bemanning)   | ja             |
| Toilet systeem       | elektrisch     |
| Wasbak               | ja             |
| Douche (bemanning)   | ja             |
| Wasmachine           | ja             |
| Droger               | ja             |
| Strijkvoorziening    | ja             |
| Flybridge            | ja             |

## MOTOR(EN)

|                        |            |
|------------------------|------------|
| Aantal motoren         | 2          |
| Merk                   | MTU        |
| Type                   | 12V396TB94 |
| Pk                     | 2135       |
| kW                     | 1571.36    |
| Brandstof              | diesel     |
| Geïnstalleerd in jaar  | 1987       |
| Maximale snelheid (kn) | 22         |
| Kruissnelheid (kn)     | 17         |
| Verbruik (ltr/uur)     | 400        |
| Aandrijving            | jet-drive  |



|                         |                                      |
|-------------------------|--------------------------------------|
| Schroefas afdichting    | ja                                   |
| Boegschroef             | ja                                   |
| Type schroef            | vast                                 |
| Materiaal schroefas     | roestvast staal                      |
| Elektrische lenspomp    | ja                                   |
| Bilge alarm             | ja                                   |
| Elektrische installatie | ja                                   |
| Generator               | 45 Kw                                |
| Generator 2             | 45 Kw plus Generator Nr 3: ONAN 2 Kw |
| Accu's                  | ja                                   |
| Startaccu               | ja                                   |
| Lichtaccu               | ja                                   |
| Generatoraccu           | ja                                   |
| Accu monitor            | ja                                   |
| Acculader               | ja                                   |
| Omvormer                | ja                                   |
| Walstroom               | ja                                   |
| Watermaker              | 150 Lt/h                             |

## NAVIGATIE

|                     |    |
|---------------------|----|
| Kompas              | ja |
| Dieptemeter         | ja |
| Marifoon            | ja |
| Handmarifoon        | ja |
| Autopiloot          | ja |
| Roerstand aanwijzer | ja |
| Radar               | ja |
| GPS                 | ja |
| Plotter             | ja |
| Wifi antenne        | ja |
| AIS ontvanger       | ja |



|                      |    |
|----------------------|----|
| AIS transponder      | ja |
| Epirb                | ja |
| Navigatieverlichting | ja |

## UITRUSTING

|                            |    |
|----------------------------|----|
| Bimini                     | ja |
| Kuipkussens                | ja |
| Kuiptafel                  | ja |
| Kuipstoelen                | ja |
| Zwemplatform               | ja |
| Zwemtrap                   | ja |
| Loopplank                  | ja |
| Anker                      | ja |
| Ankerketting               | ja |
| Ketting teller             | ja |
| Ankerlier                  | ja |
| Bijboot                    | ja |
| Buitenboordmotor           | ja |
| Reddingsvlot               | ja |
| Reddingsvlot (pers)        | 14 |
| Zwemvesten                 | ja |
| Reddingsboei               | ja |
| Stootkussens               | ja |
| Landvasten                 | ja |
| Reserve onderdelen         | ja |
| Gereedschap                | ja |
| TV-ontvanger               | ja |
| Surround Sound System      | ja |
| Brandblusser               | ja |
| Brandblusser in motorkamer | ja |



# BAGLIETTO 120



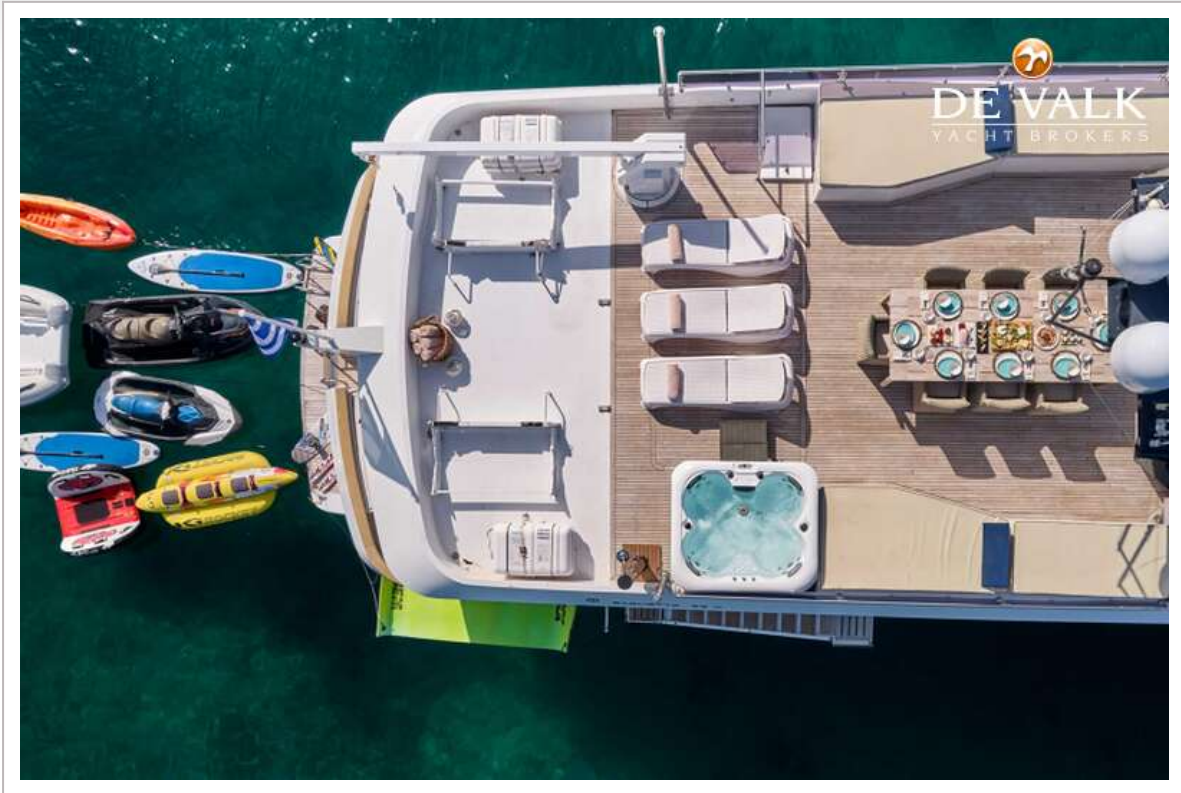
BAGLIETTO 120



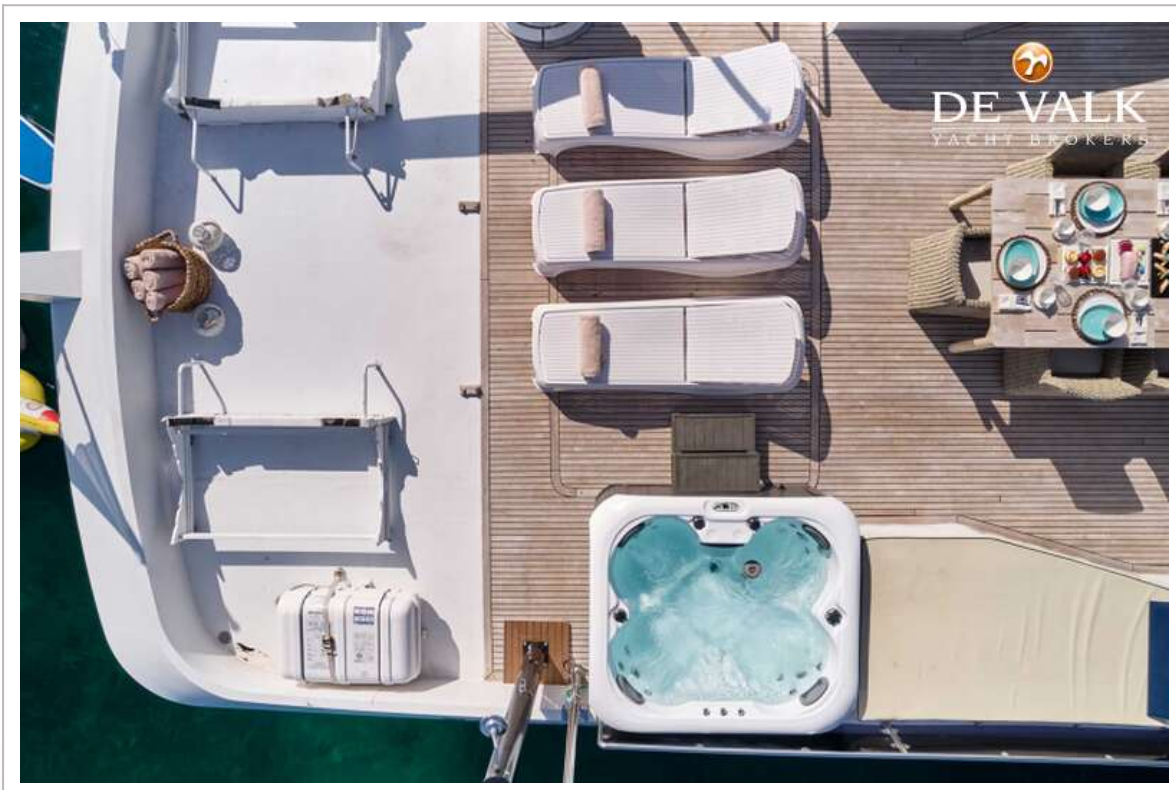
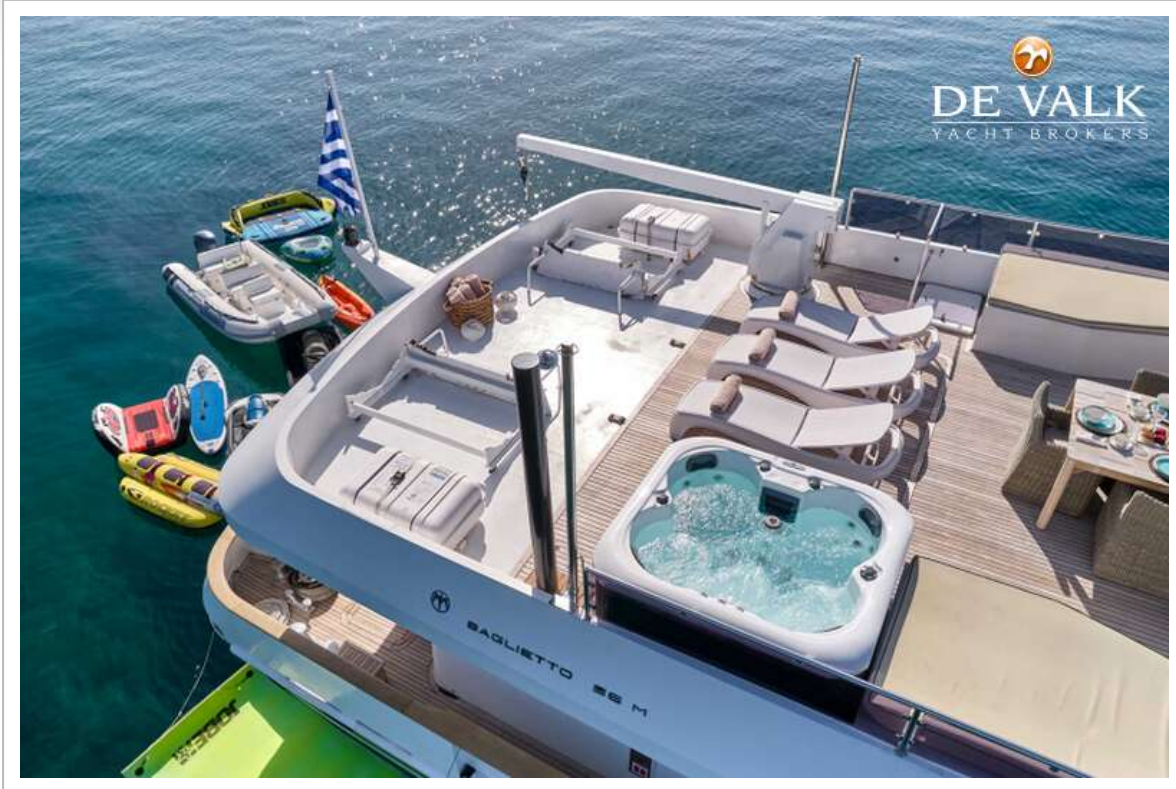
# BAGLIETTO 120



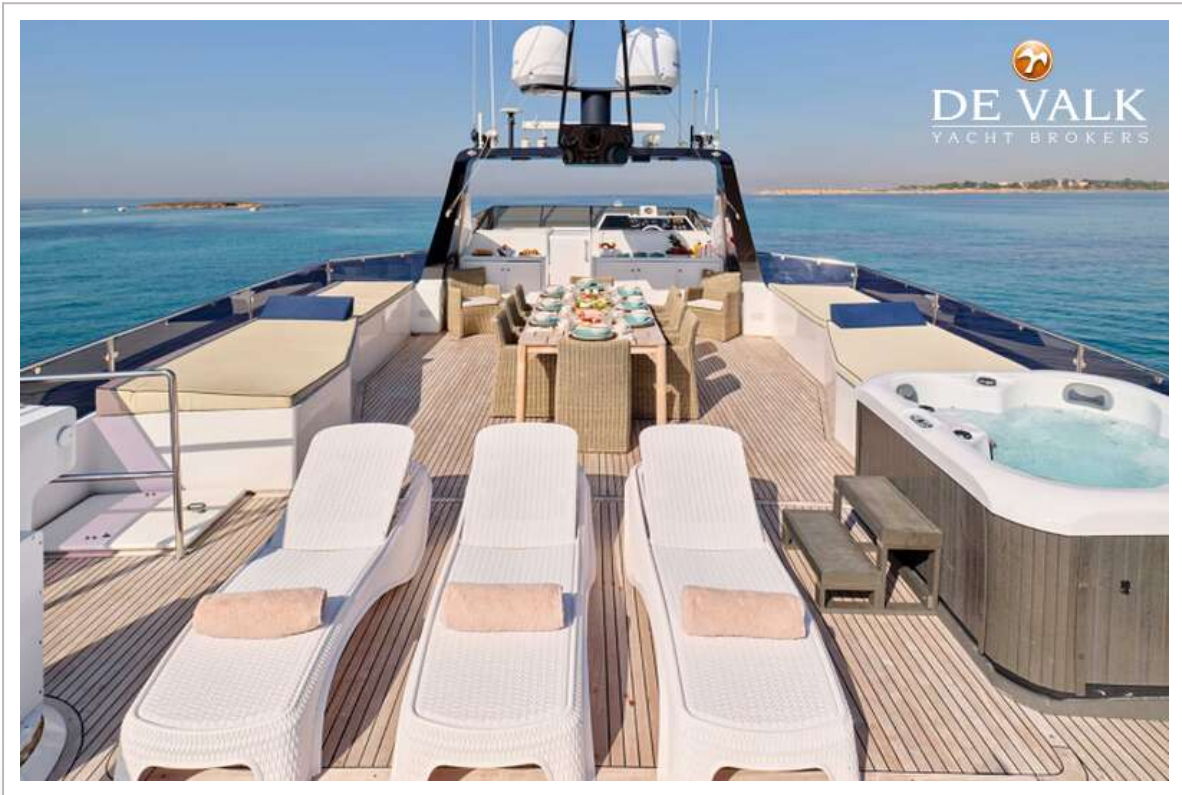
BAGLIETTO 120



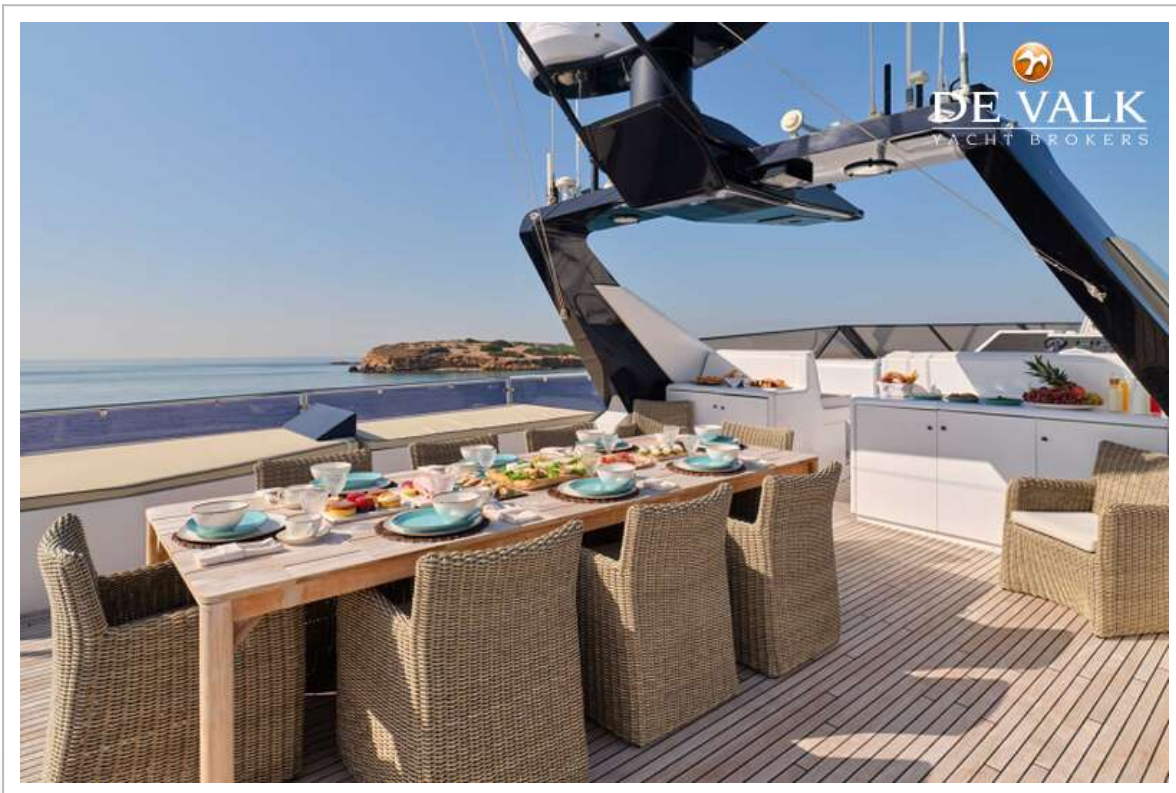
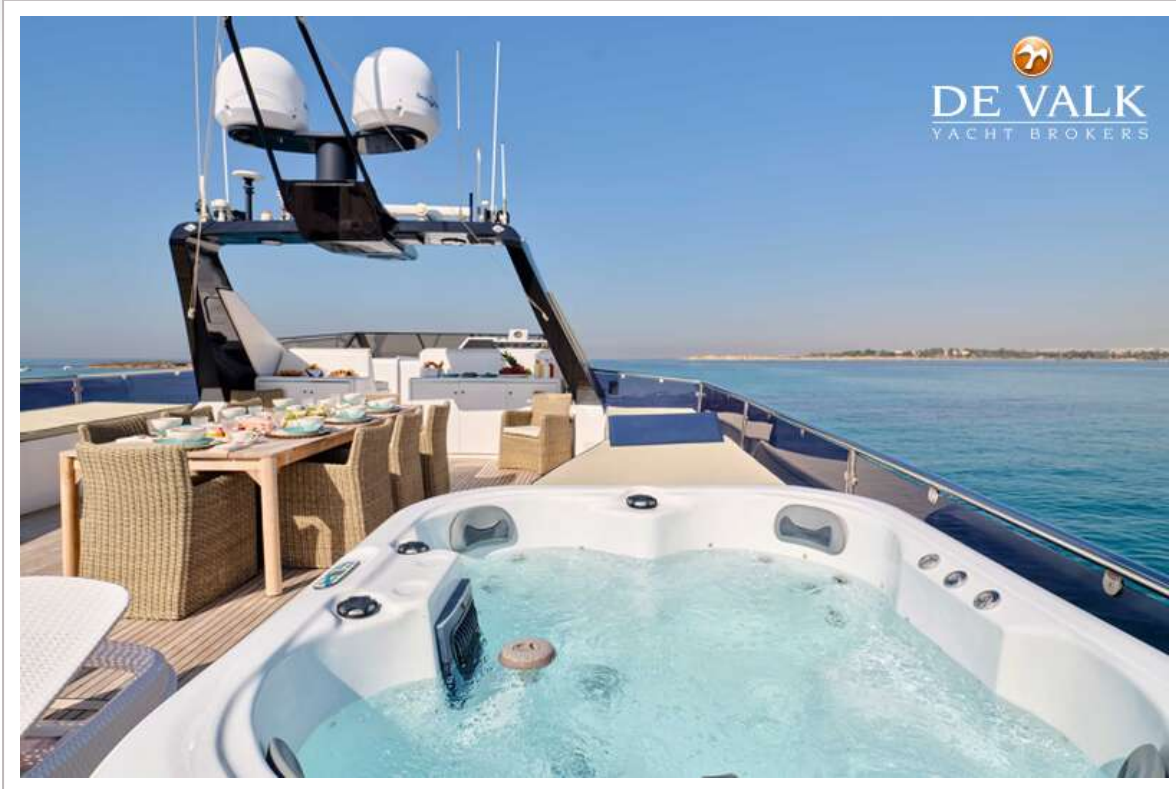
# BAGLIETTO 120



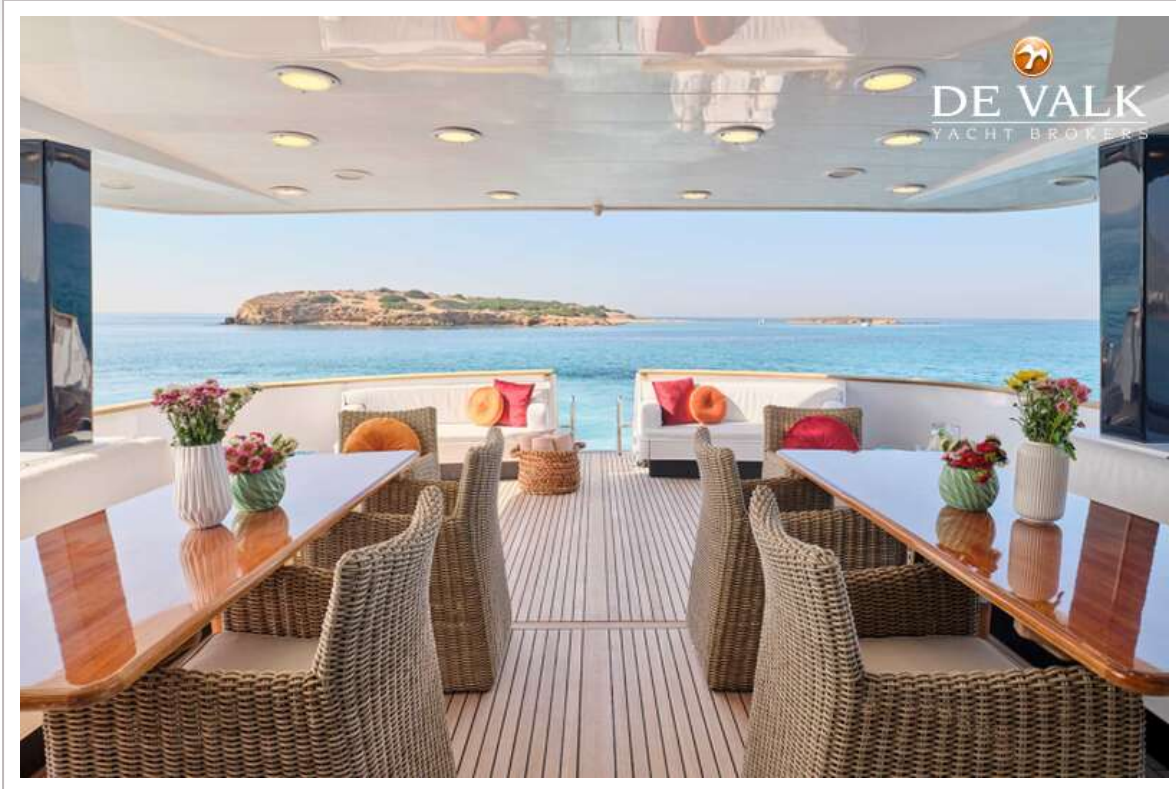
BAGLIETTO 120



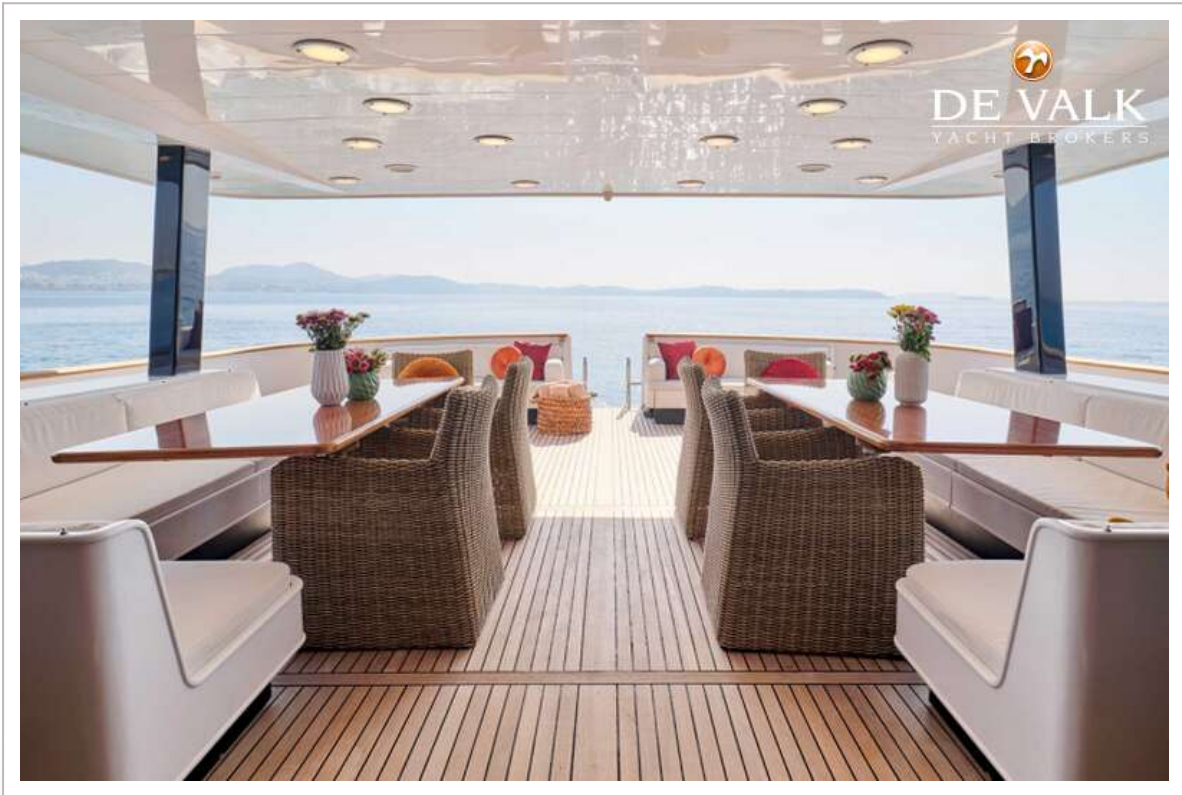
# BAGLIETTO 120



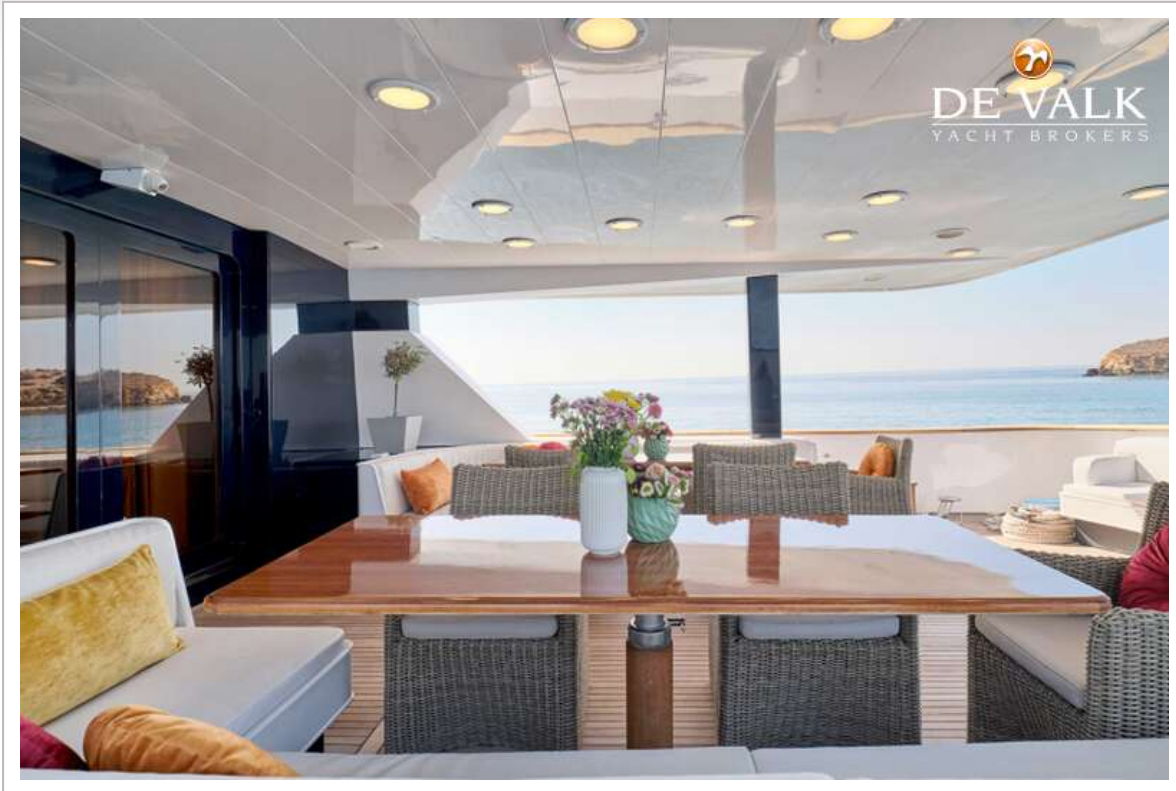
# BAGLIETTO 120



BAGLIETTO 120



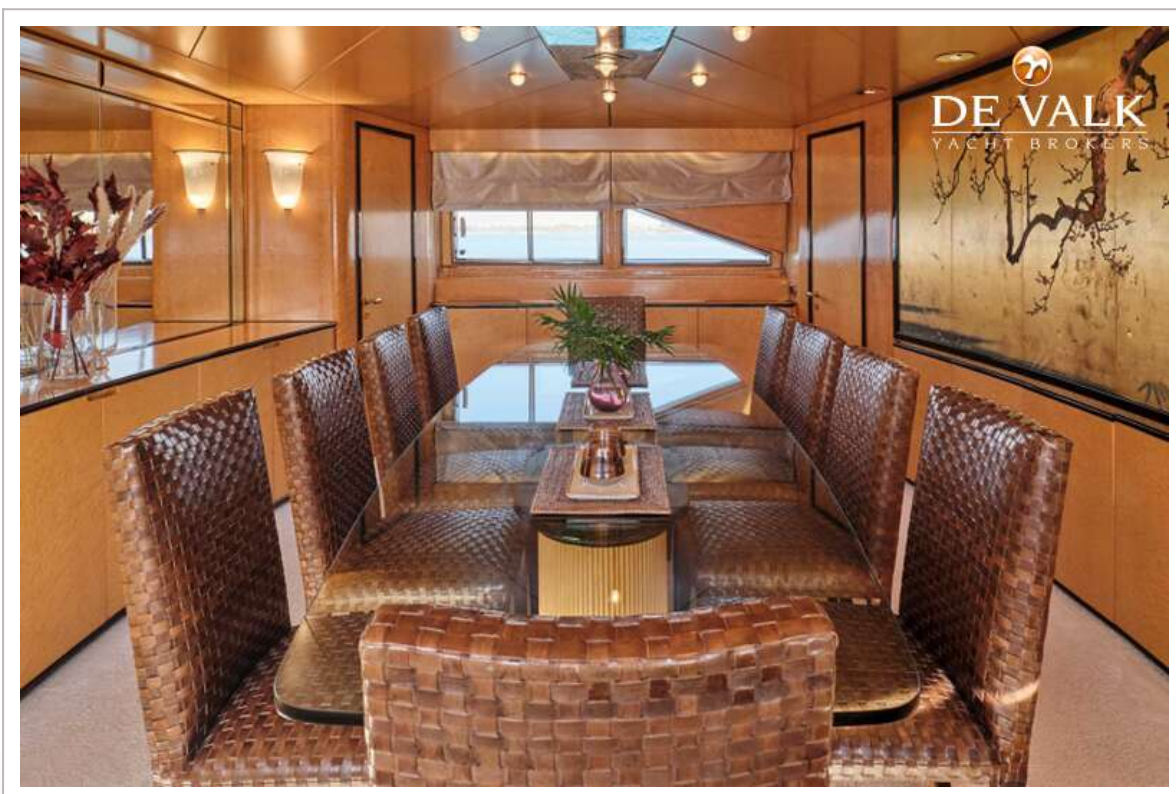
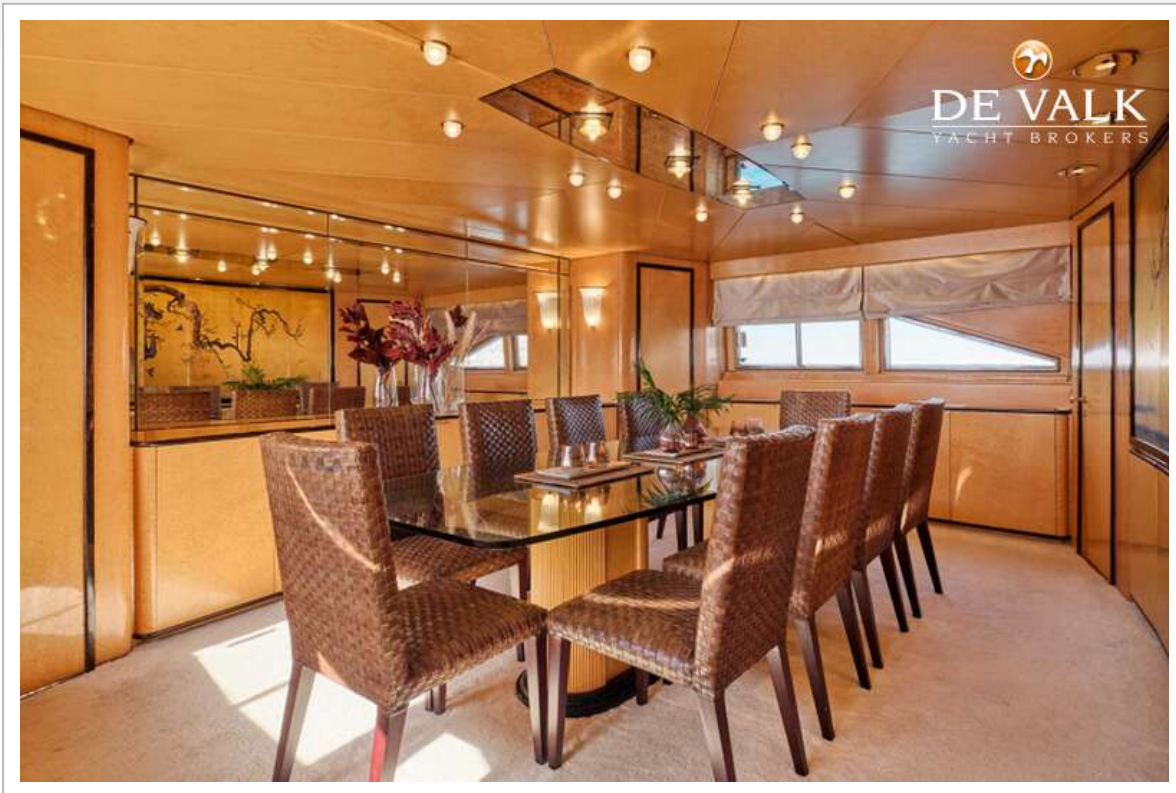
# BAGLIETTO 120



# BAGLIETTO 120



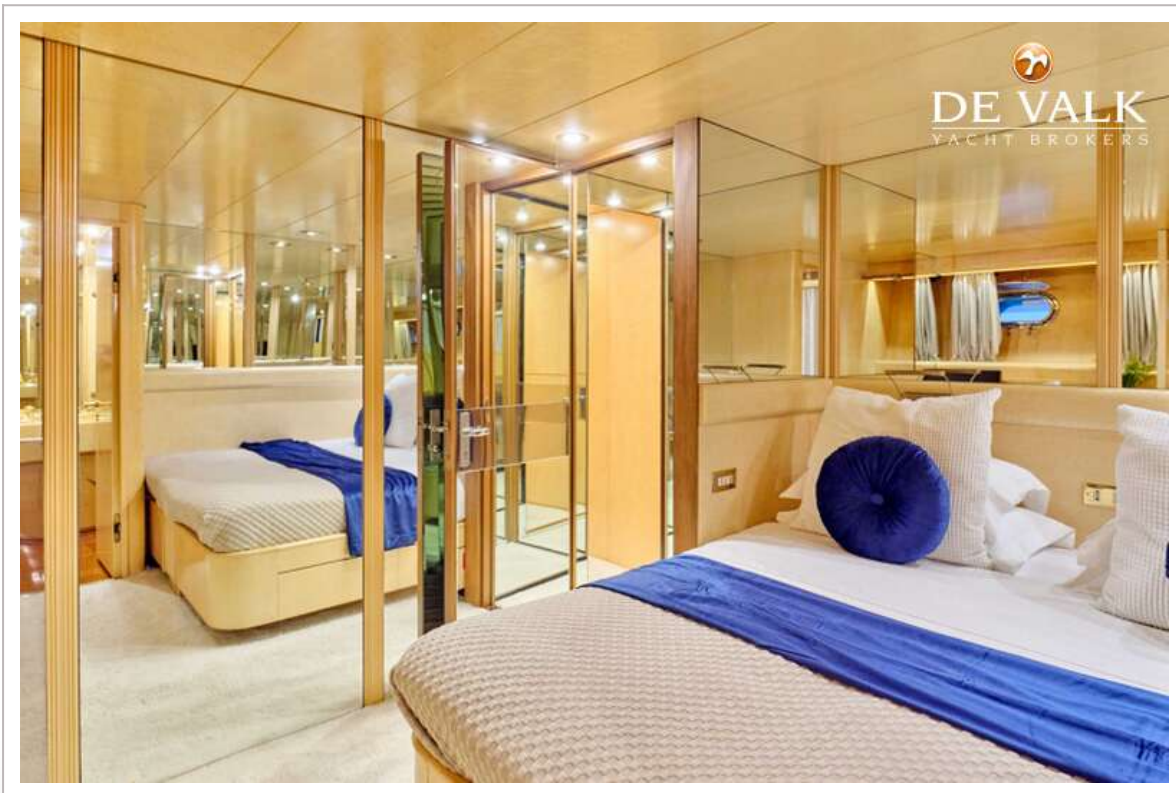
# BAGLIETTO 120



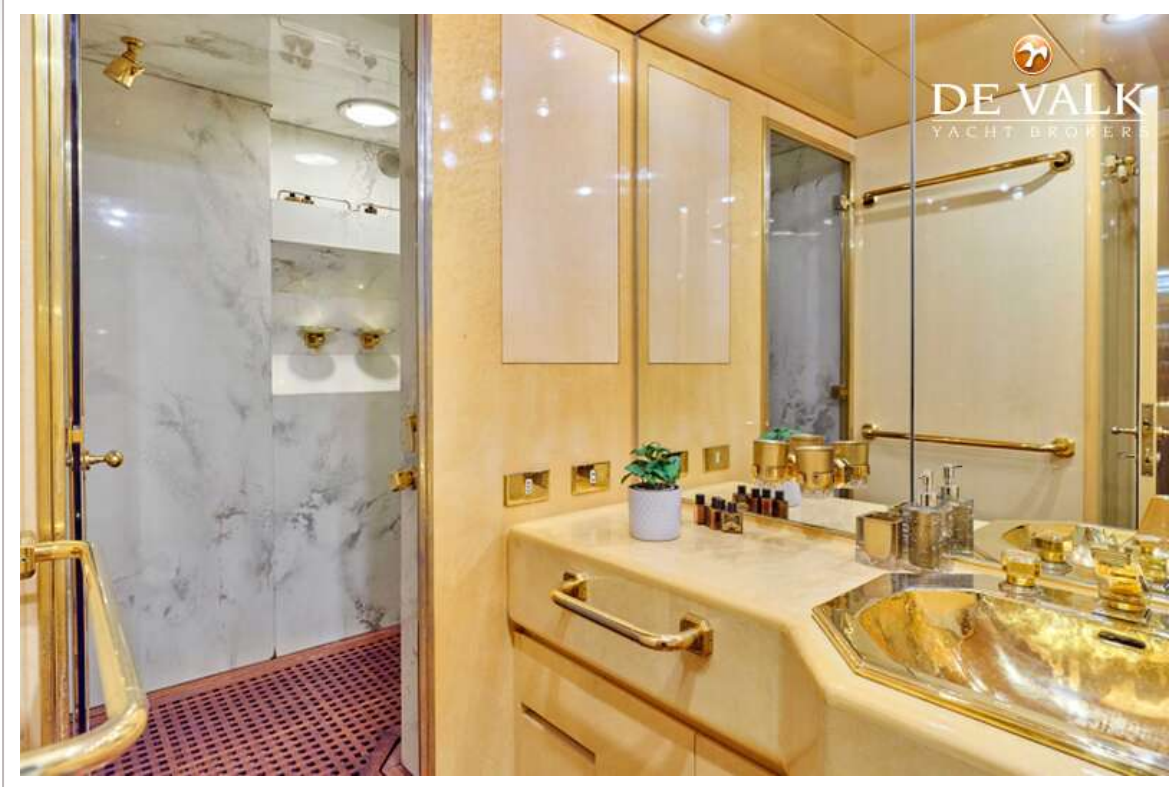
# BAGLIETTO 120



# BAGLIETTO 120



# BAGLIETTO 120





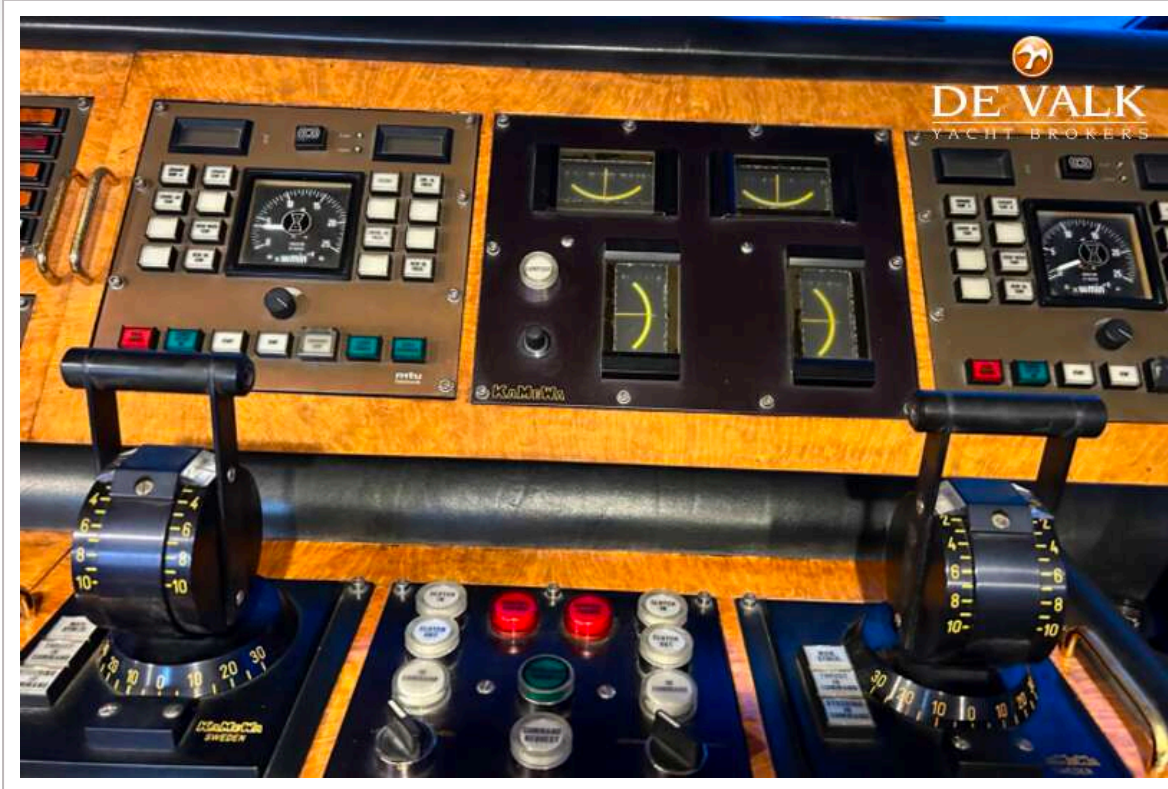
# BAGLIETTO 120



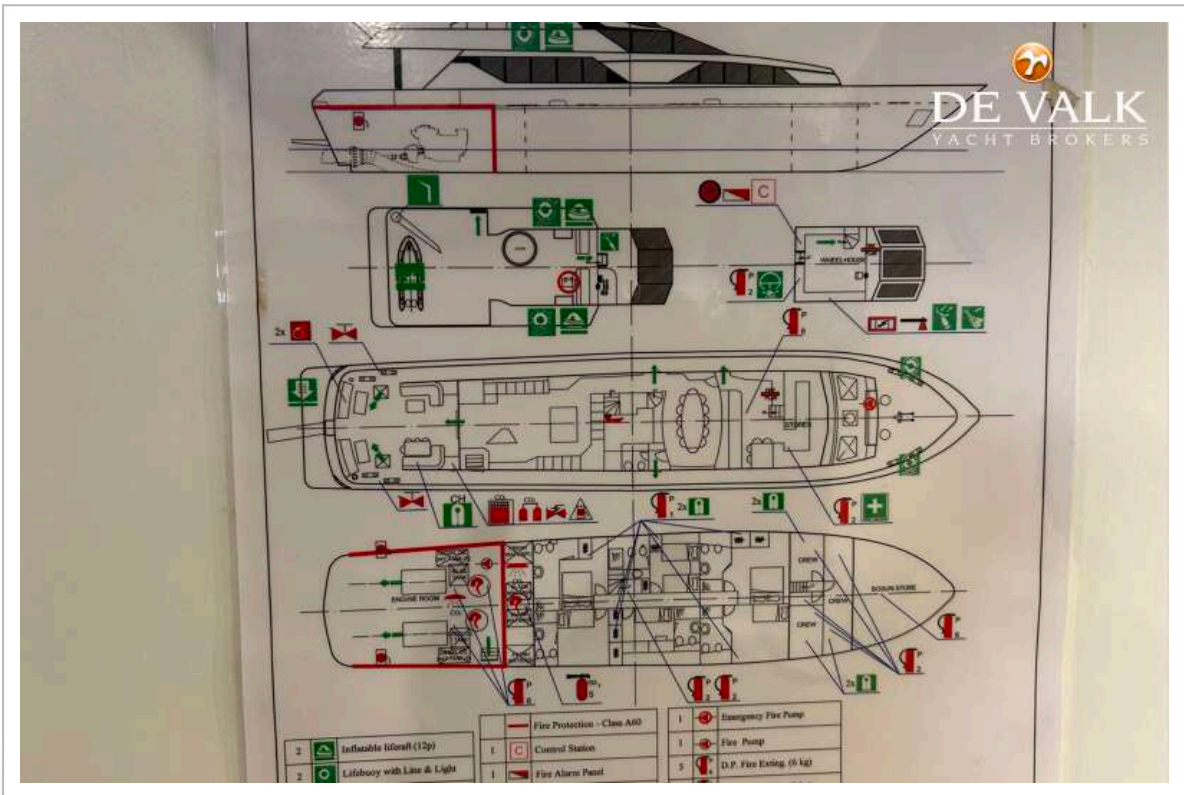
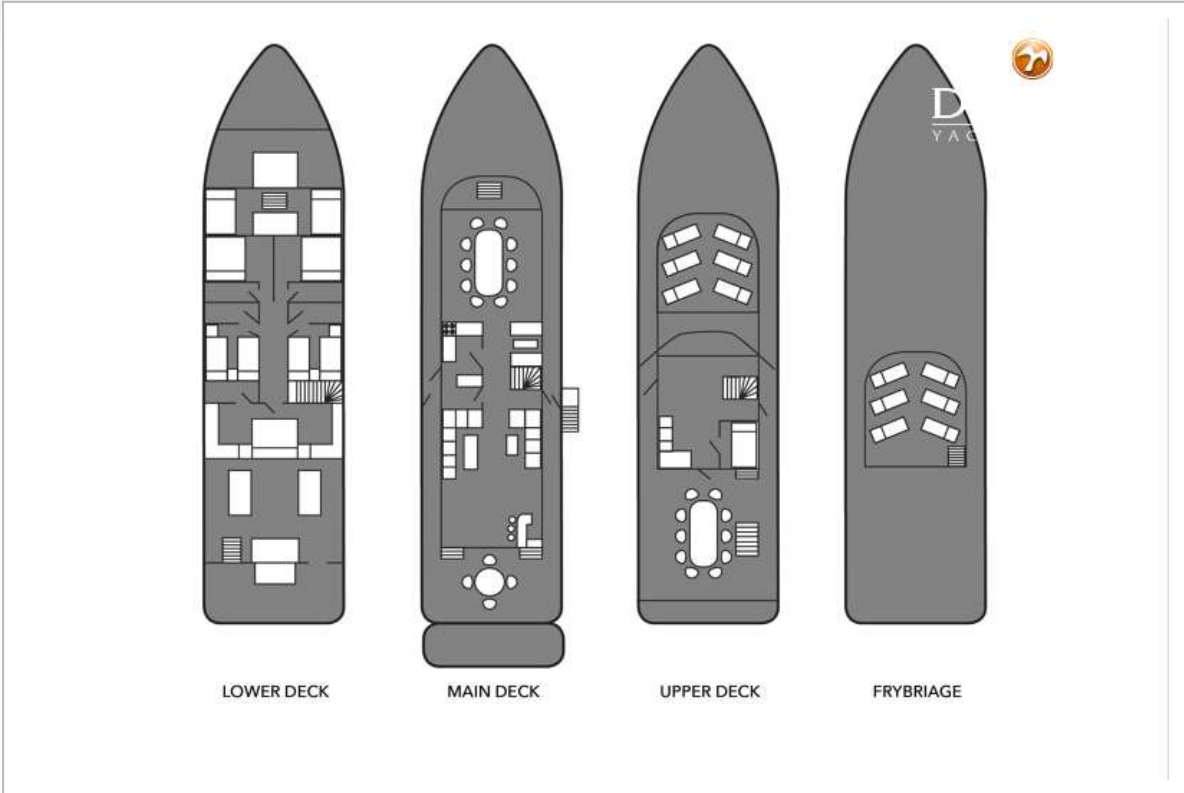
# BAGLIETTO 120



# BAGLIETTO 120



# BAGLIETTO 120



# BAGLIETTO 120

