



DE VALK
YACHT BROKERS



SWEDEN YACHTS 50



DE VALK
YACHT BROKERS

SWEDEN YACHTS 50

VAN DE MAKELAAR

This Sweden 50 is an extensively and recently refitted Swedish pedigree oceangoing yacht, combining performance with elegance, comfort and safety. She has been meticulously prepared by naval architect/superyacht refit specialist owner for a family world cruise. Energy and fresh water independent, new sails, new standing rigging, fully refurbished teak deck, shallow draft wing keel, long list of new equipment and upgrades. Powerful Volvo Penta 140hp engine with Gori overdrive propeller, air conditioning, bow thruster, electric genoa furler and genoa winches. This Sweden 50 is ready to go.

Eric Lamers

SPECIFICATIES

Afmetingen	15.25 x 4.35 x 2.00 (m)	Bouwer	Sweden Yachts
Bouwjaar	1990	Hutten	3
Materiaal	Polyester	Slaapplaatsen	9
Motor(en)	1 x Volvo Penta TMD31b diesel	Pk/Kw	140.00 (pk), 103.04 (kw)
Vraagprijs	€ 239.000 (BTW Betaald)	Ligplaats	bij verkoopkantoor

CONTACT

Kantoor	De Valk Antibes	Telefoon	+33 492 91 0202
Adres	2, Avenue de Verdun 06600 Antibes FR	E-mail	antibes@devalk.nl

DISCLAIMER

Hoewel er uiterste zorg besteed is aan de correctheid, volledigheid en actualiteit van onze informatie kunnen hieraan geen rechten worden ontleend.



SWEDEN YACHTS 50

ALGEMEEN

Model	SWEDEN YACHTS 50
Type	zeiljacht
Lengte (m)	15,25
Lengte waterlijn (m)	12,60
Breedte (m)	4,35
Diepgang (m)	2,00
Stahoogte (m)	1,94
Bouwjaar	1990
Gebouwd door	Sweden Yachts
Land	Zweden
Ontwerper	Peter Norlin/Jens Ostman
Waterverplaatsing (t)	14,5
Ballast (ton)	Cast antimony lead keel 6t
CE norm	A
Romp materiaal	polyester
Romp kleur	White with grey decorative lines
Rompvorm	rondspant
Kiel type	vleugelkiel
Materiaal opbouw	polyester
Dek materiaal	polyester
Afwerking dek	teak (recaulked and fully refurbished 2024)
Afwerking opbouw	verf
Afwerking kuip	teak (recaulked and fully refurbished 2024)
Antifouling (jaar)	Last haul-out 2024, scheduled haul-out for Spring 2025
Dorades	Vetus x 3
Raamlijsten	aluminium Hard anodised
Raammateriaal	hardglas
Patrijspoorten	aluminium All hatches refurbished with new seals and lenses 2024
Isolatie	Sandwich cored hull and deck for anti-condensation
Brandstoftank (liter)	roestvast staal 2 stainless total 350 lt



Inhoudsmeter (brandstoftank)	VDO
Drinkwatertank (liter)	3 stainless steel total 700lt
Inhoudsmeter (drinkwatertank)	VDO
Vuilwatertank (liter)	roestvast staal 1 stainless steel 60lt
Inhoudsmeter (vuilwatertank)	Sight tube level indication
Vuilwatertank afvoer	dekafzuigpunt
Stuurwiel	kabelbesturing On anodised aluminium quadrant
Noodhelmstok	Ready for emergency installation with pulley control set-up

ACCOMMODATIE

Hutten	3
Slaapplaatsen	9
Interieur	mahonie
Vloer	Teak and holly
Stahoogte salon (m)	2m
Verwarming	Reverse cycle air conditioning
Airco	airco omkeerbaar
Kaartentafel	Large chart table/navigation station
Keuken	ja
Aanrechtblad	Corian countertops in galley and bathrooms
Spoelbak	Corian sinks in galley and bathrooms
Kooktoestel	Gas 4-bumer Techimpex + induction top when on shore power
Oven	Gas
Afzuigkap	ja
Koelkast	1 x large top load, 1 x day fridge with freezer compartment
Warmwatersysteem	220V + motor
Waterdruksysteem	Electrical central pressure pump
Hand en/of voetpomp	Foot pump for both fresh water and sea water in galley
Eigenaarshut	Double bed
Lengte bed (m)	2.00m



SWEDEN YACHTS 50

Kledingkast	hangend gedeelte en lades 2 x hanging wardrobes, 2 x large drawers under bed
Badkamer	Ensuite with shower section curtained off from rest of bathroom
Toilet	Ensuite
Toilet Systeem	Manual toilet in master cabin bathroom
Wasbak	ja
Gastenhut 1	Double bed
Lengte bed (m)	2.00m
Kledingkast	lades en legplanken Hanging and multiple lockers
Badkamer	En suite, shared with other aft cabin each with own access door
Toilet	En suite
Toilet systeem	Electric going to holding tank/overboard via 3-way valve
Douche	En suite, shared with other aft cabin each with own access door
Gastenhut 2	Double bed + small bunk bed
Lengte bed (m)	2.0m
Kleerkast	lades en legplanken Hanging and multiple lockers
Badkamer	En suite, shared with other aft cabin each with own access door
Toilet	En suite
Toilet systeem	Electric going to holding tank

MOTOR(EN)

Aantal motoren	1
Merk	Volvo Penta
Type	TMD31b
Pk	140
kW	103.04
Brandstof	diesel
Geïnstalleerd in jaar	1990
Maximale snelheid (kn)	8.5
Kruissnelheid (kn)	6.5-7
Bereik (nm)	350



SWEDEN YACHTS 50

Koelsysteem motor	Freshwater heat exchanger (cleaned & anode changed 2024)
Aandrijving	schroefas
Motorbediening	Bowden cable
Boegschroef	Electric Lewmar 8kW with dedicated batteries and 50A charger
Uitlaatsysteem	Watercooled, new exhaust cooling elbow 2022
Stuwdrukklager	Python Drive thrust bearing/flexible coupling new 2022
Type schroef	Gori folding with overdrive
Schroefbladen	3
Materiaal schroefas	Duplex stainless steel new 2022
Smering schroefas	Grease through Volvo Penta stern gland 2022
Handlenspomp	2x fully functioning: 1 interior, 1 exterior cockpit
Elektrische lenspomp	1x Jabsco
Bilge alarm	Automatic level switch
Elektrische installatie	24V + 220V on shore power/generator
Generator	Paguro 4kW, wet exhaust
Draaiuren generator	201 hrs March 2025
Startaccu	Main engine 180Ah lead acid heavy duty
Lichtaccu	AGM 4x150Ah new 2023
Generatoraccu	1x12V 2021
Boegschroefaccu	Dedicated battery bank
Accu monitor	Victron Smartshunt and Victron BMV712Smart battery monitoring s.
Acculader	Mastervolt Chargemaster Plus 60A (new 2022)for house batteries
Omvormer	Mastervolt 500W
Acculader/omvormer	Victron Buckboost 2023 for engine alternator charge regulation
Zonnecellen	4 awning integrated Solbian SR155 solar panels 100% energy needs
Walstroom	met kabel
Watermaker	Spectra Cape Horn Extreme 330 24V 55lt/hr,New membrane 2023



NAVIGATIE

Kompas	Suunto + B&G Fluxgate
Dieptemeter	B&G
Log	B&G
Windmeetset	B&G
Marifoon	B&G V60-B with integrated GPS/Class B AIS new 2022
Handmarifoon	B&G H-60 new 2022+ Standard horizon handheld with integrated GPS
Autopilot	B&G
Roerstand aanwijzer	B&G
Radar	Raymarine 4kW 18" HD Color
Radar/GPS/plotter	Raymarine Hybrid Touch 12" screen inside, 7" outside
Elektronische kaart(en)	Navionics
AIS transceiver	B&G H60 VHF integrated AIS transmit/receive
Epirb	Kannad SafePro AIS (with integrated AIS transmitter)
Zoeklicht	Handheld plastimo
Extra info	Sailor Compact HF SSB

UITRUSTING

Buiskap	New 2022
Bimini	New 2022/2023 full cockpit area
Zonnetent	Between cockpit awning and mast
Kuipkussens	Sun lounge cushions forward of sprayhood, new 2022
Kuiptafel	2 x extensions
Zwemplatform	Large custom platform on transom
Zwemtrap	Stainless steel swim ladder
Loopplank	Multiplex carbon fibre gangway new 2023
Dekdouche	On stern platform
Anker	Lewmar Delta 35kg
Ankerketting	70m
Anker 2	Fortress



SWEDEN YACHTS 50

Ankerlier	elektrisch Simpson Lawrence 2023
Zeereling	Stainless steel (wires&tensioners new 2023)
Handgreep (opbouw)	Teak
Zij-instap in reling	P&S
Reddingsvlot laatst gekeurd	New 2022
Reddingsboei	ja
Joon	ja
Veiligheidslijnen op dek	Yes and multiple pad eyes for tethers around cockpit
Radar reflektor	ja
Stootkussens	New covers 2024
Landvasten	New 2023
Reserve onderdelen	Extensive
TV	ja
Radio-cd speler	ja
DVD speler	ja
Subwoofer	ja
Kuipspeakers	ja
Speakers in salon	ja
Speakers in hut	ja
Klok - barometer	ja
Brandblusser	ja

TUIGAGE

Tuigage	Cutter rig with removable staysail. All new BSI Denmark 2022
Staand want	draad
Merk mast	Selden (removed and fully inspected 2022)
Materiaal mast	Aluminium (not coated)
Zalingen	3
Doorgelat grootzeil	Elvstrom Full batten 60 sqmt eXRP tri-radial with 3 reefs 2023
Genua	Elvstrom 79.5 sqmt eXRP tri-radial, new 2024.
Genua rolreefsysteem	Electric Bamar furler (with new controller 2024)



Gennaker	North sails, little use
Stagzeil	North Sails 3D Marathon staysail
Stagzeil rolreefsysteem	Karver manual headsail furler
Reefinstallatie	Slab reefing, 3 reefs, deep 3rd reef for storm conditions
Achterstagspanner	Navtec hydraulic (overhaul 2022)
Giekneerhouder	Navtec hydraulic (overhaul 2022)
Primaire schootlieren	Lewmar 66 electric x2
Secondaire schootlieren	Lewmar 48
Lierhoezen	New 2023
Spinnakerboom	Aluminium
Geïsoleerde achterstag	New isolators 2022

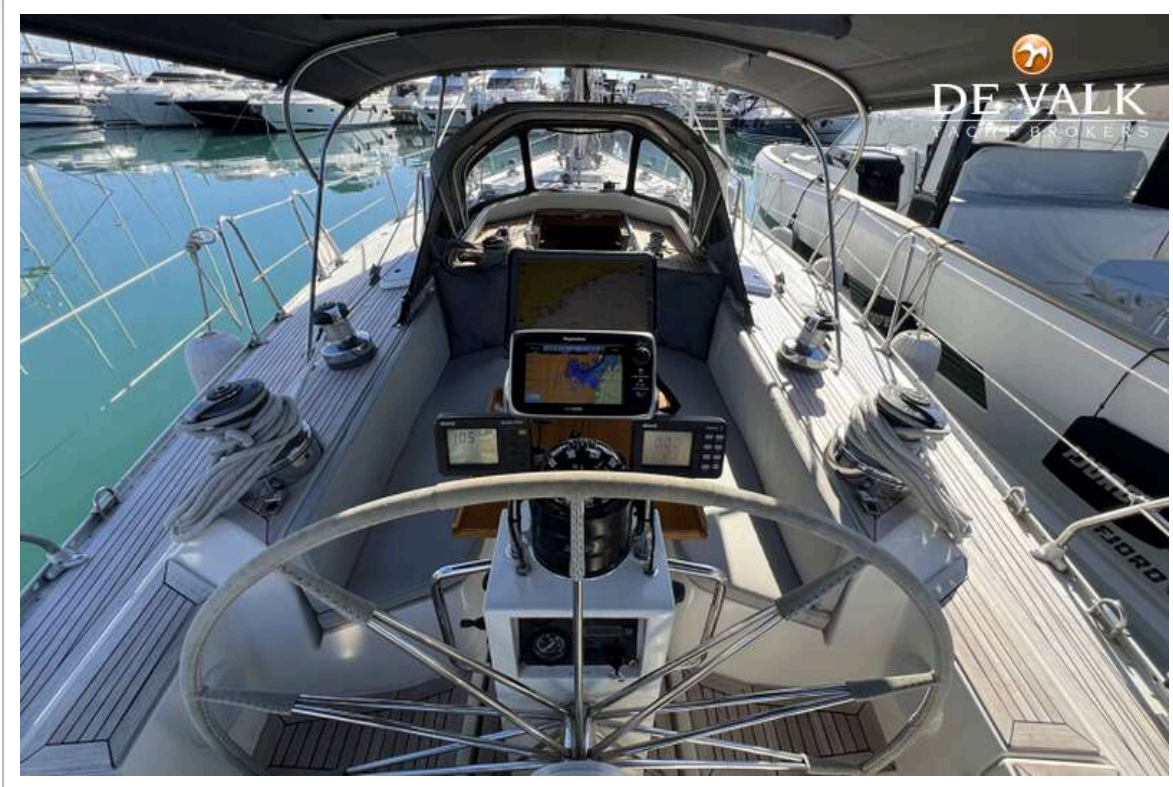






SWEDEN YACHTS 50





SWEDEN YACHTS 50



SWEDEN YACHTS 50

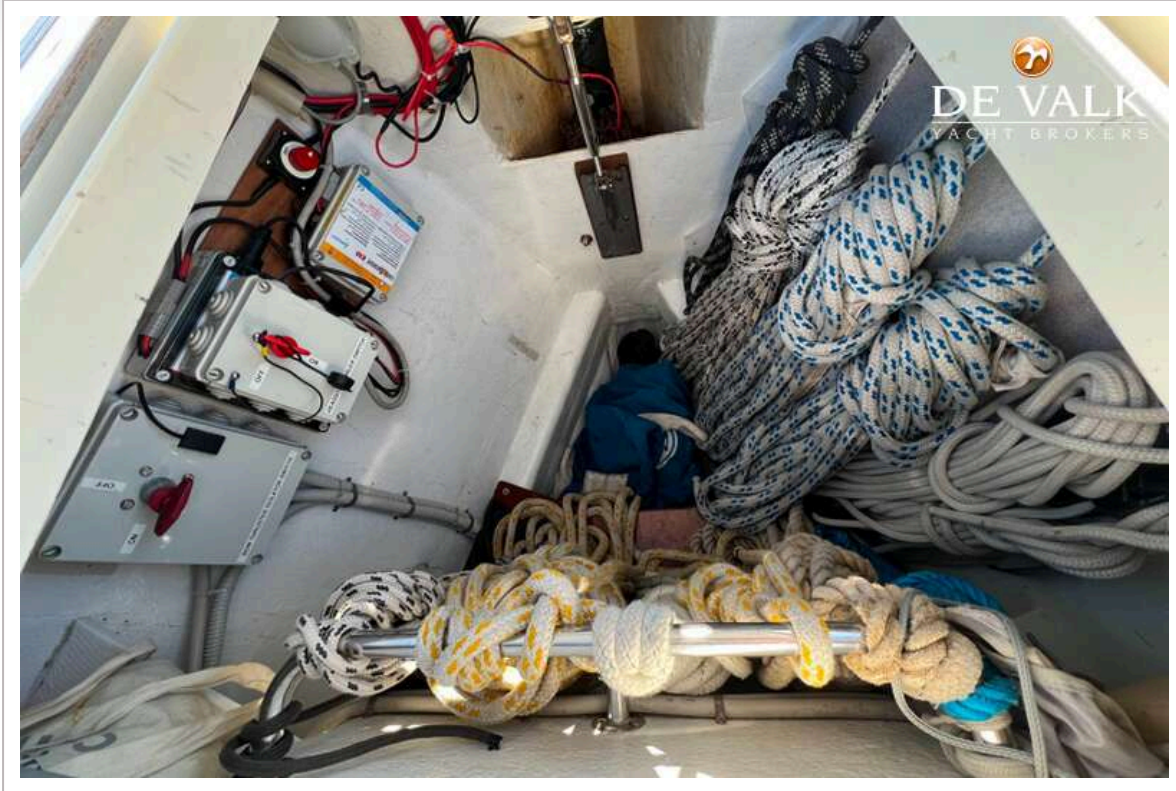


SWEDEN YACHTS 50

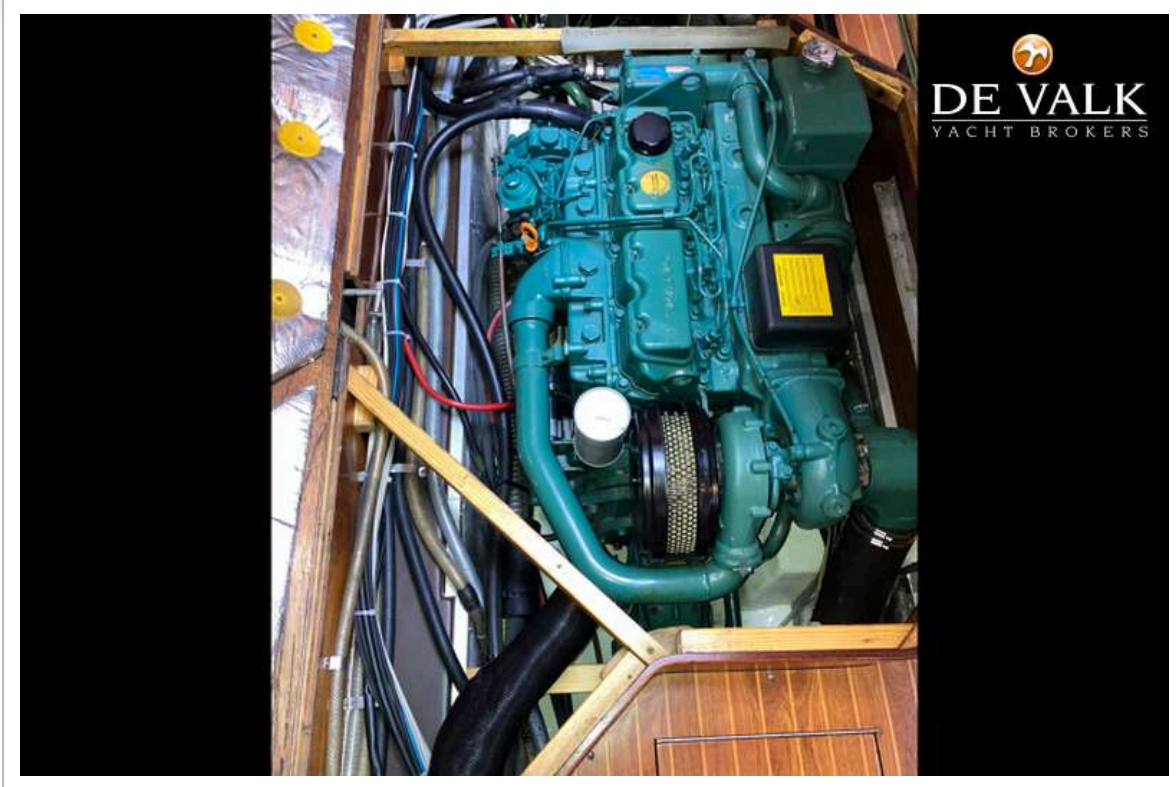


SWEDEN YACHTS 50





SWEDEN YACHTS 50



SWEDEN YACHTS 50



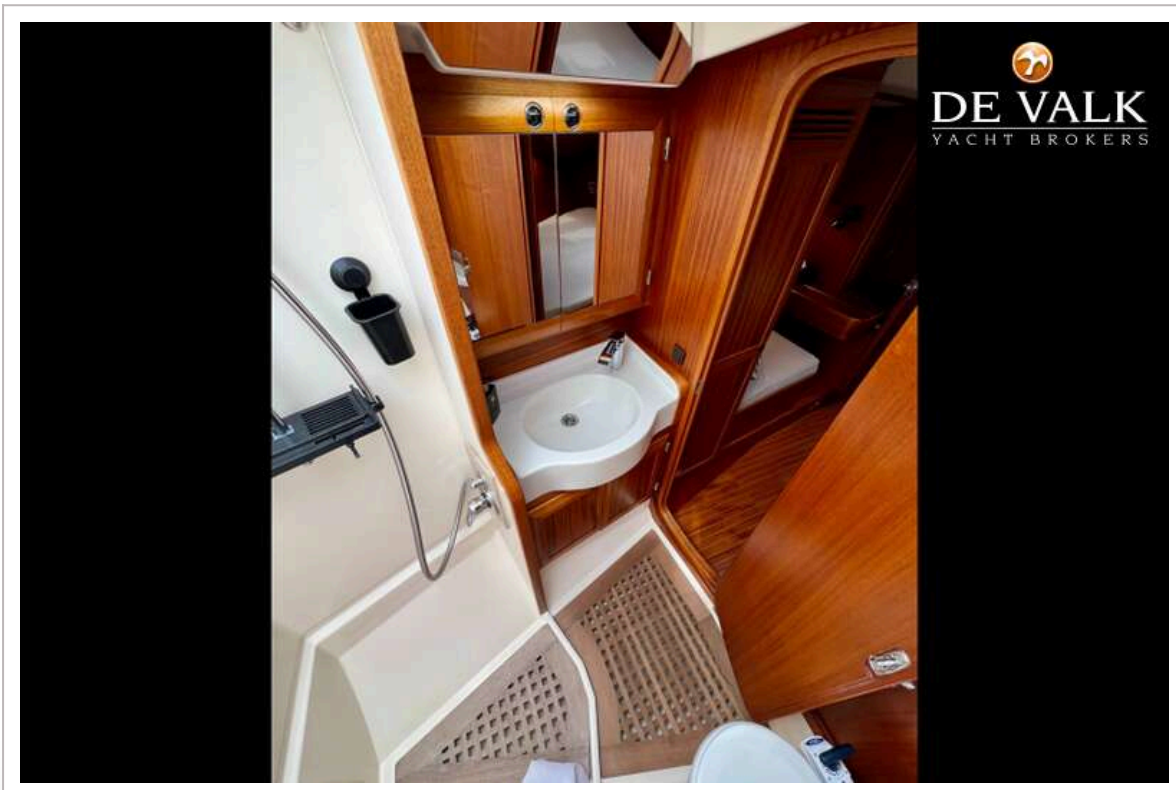
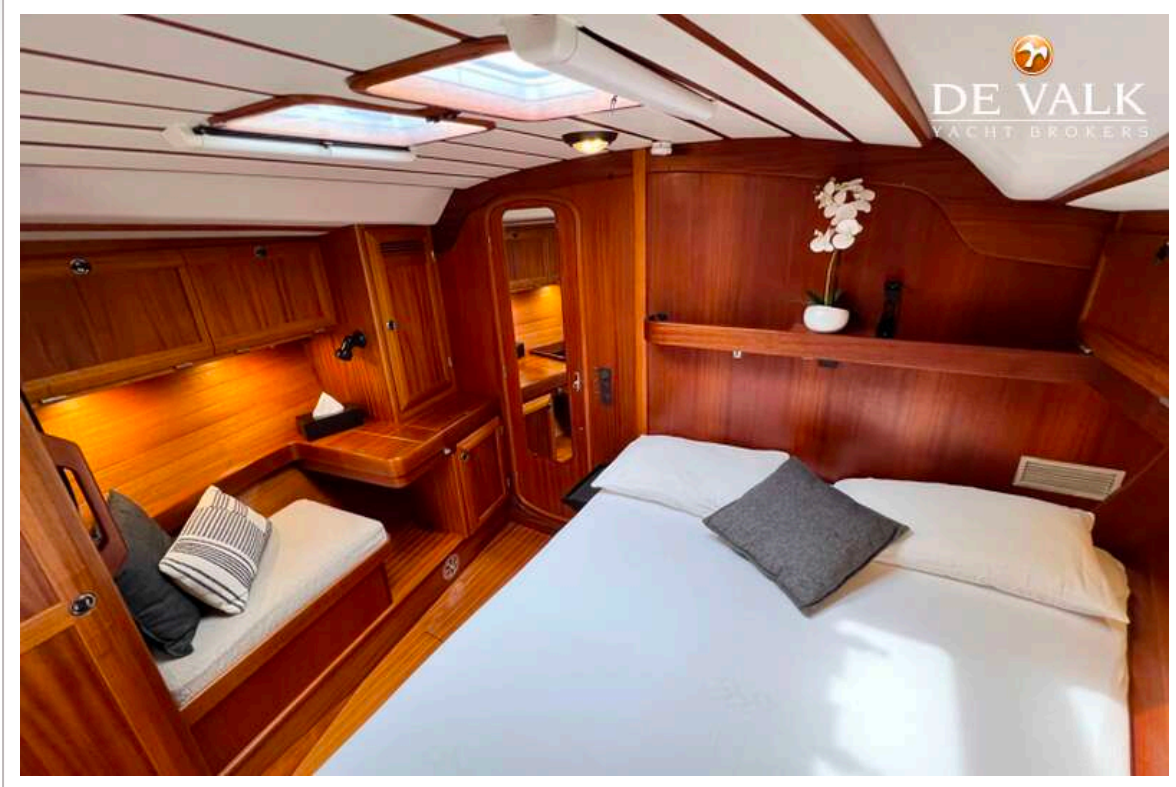
SWEDEN YACHTS 50



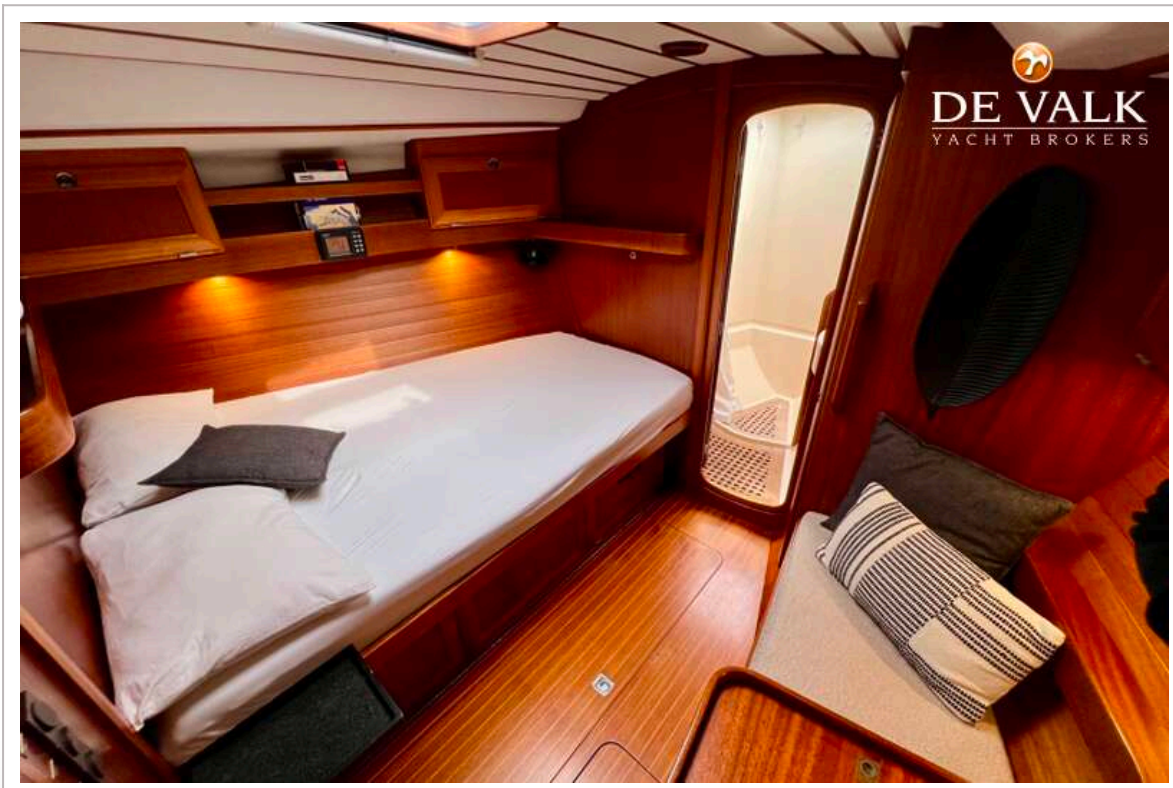
SWEDEN YACHTS 50



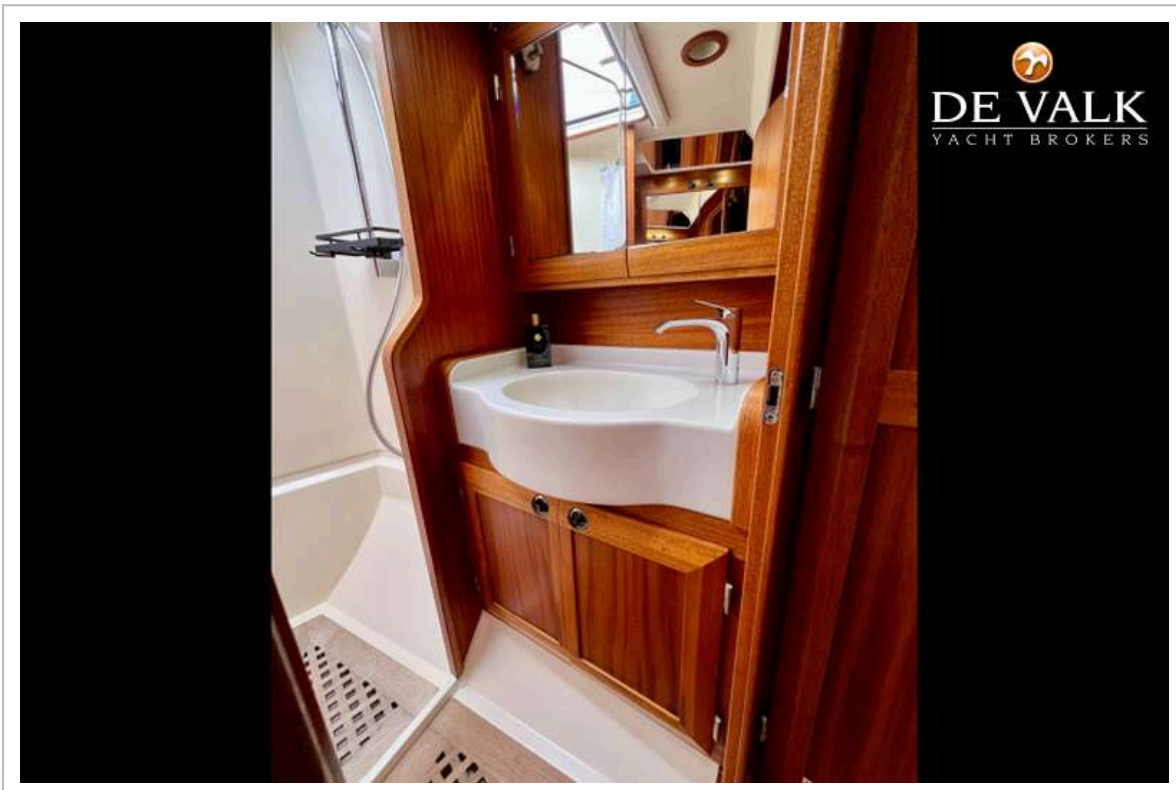
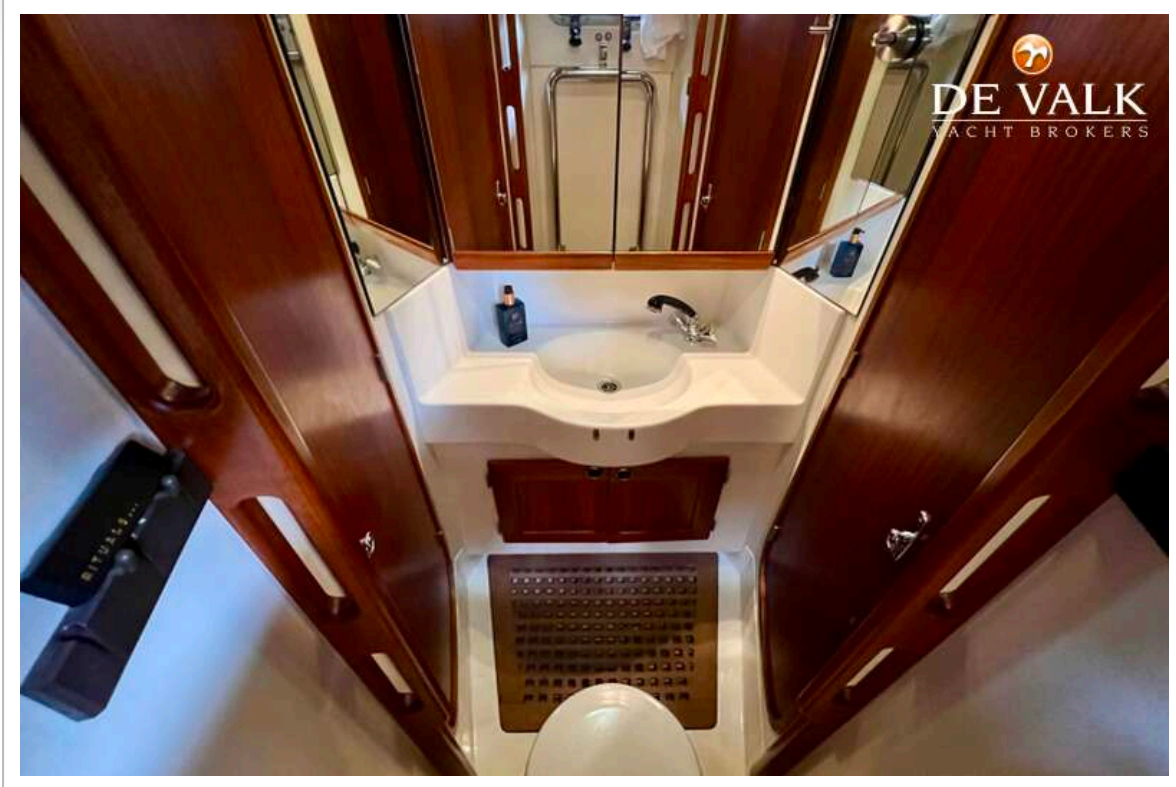
SWEDEN YACHTS 50



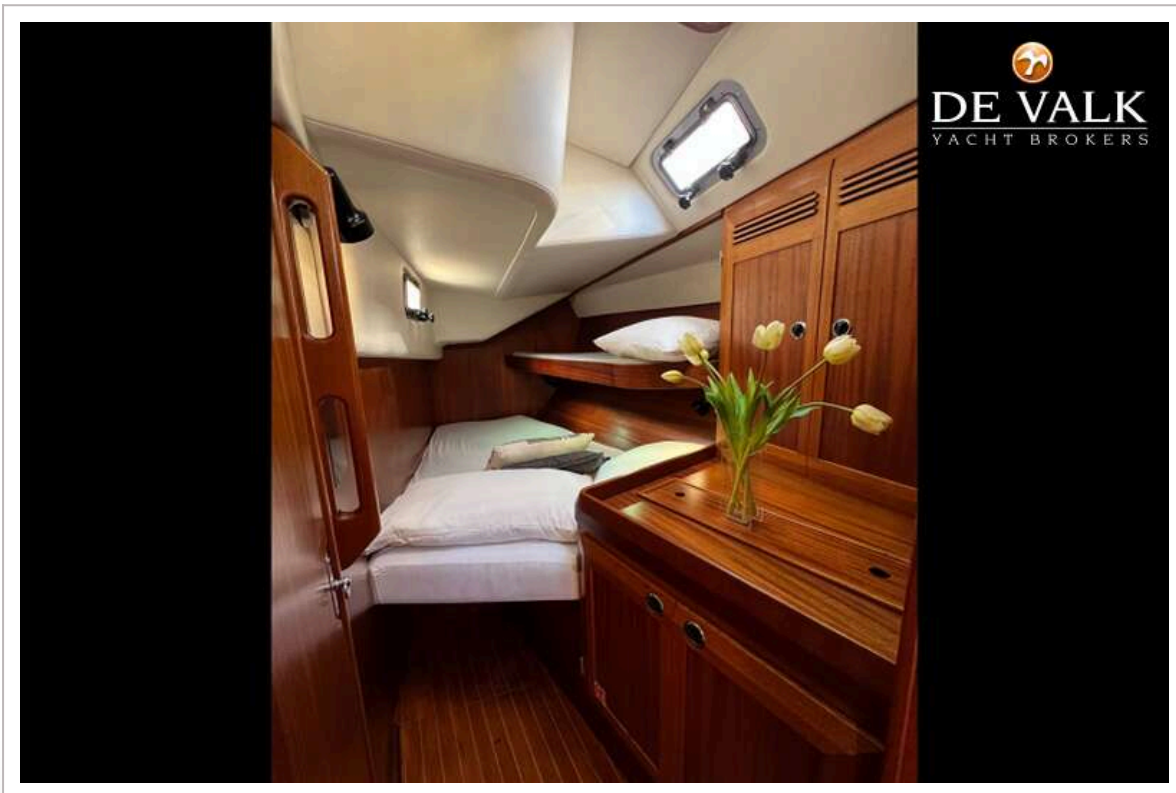
SWEDEN YACHTS 50



SWEDEN YACHTS 50



SWEDEN YACHTS 50



SWEDEN YACHTS 50

