



## GARCIA EXPLORATION 45



DE VALK  
YACHT BROKERS

# GARCIA EXPLORATION 45

## VAN DE MAKELAAR

*Tom Kingham*

## SPECIFICATIES

<b>Afmetingen</b>	14.88 x 4.44 x 1,14 / 2.90 (m)	<b>Bouwer</b>	Garcia Yachts
<b>Bouwjaar</b>	2022	<b>Hutten</b>	2
<b>Materiaal</b>	Aluminium	<b>Slaapplaatsen</b>	
<b>Motor(en)</b>	1 x Volvo Penta D2-75 diesel	<b>Pk/Kw</b>	75.00 (pk), 55.20 (kw)
<b>Vraagprijs</b>	€ 899.000 (BTW Niet betaald)	<b>Ligplaats</b>	bij verkoopkantoor

## CONTACT

<b>Kantoor</b>	De Valk Palma	<b>Telefoon</b>	+34 971 40 29 11
<b>Adres</b>	Port. Cala Nova, Avda. Joan Miro, 327 07015 Palma de Mallorca ES	<b>E-mail</b>	palma@devalk.nl

## DISCLAIMER

Hoewel er uiterste zorg besteed is aan de correctheid, volledigheid en actualiteit van onze informatie kunnen hieraan geen rechten worden ontleend.



# GARCIA EXPLORATION 45

## ALGEMEEN

<b>Model</b>	GARCIA EXPLORATION 45
<b>Type</b>	zeiljacht
<b>Lengte (m)</b>	14,88
<b>Breedte (m)</b>	4,44
<b>Diepgang (m)</b>	2,90
<b>Diepgang min (m)</b>	1,14
<b>Doorvaarhoogte (m)</b>	19,80
<b>Bouwjaar</b>	2022
<b>Gebouwd door</b>	Garcia Yachts
<b>Land</b>	Frankrijk
<b>Ontwerper</b>	BerretRacoupeau Yacht Design
<b>Waterverplaatsing (t)</b>	14,61
<b>CE norm</b>	A
<b>Romp materiaal</b>	aluminium
<b>Romp kleur</b>	Grey aluminium
<b>Materiaal opbouw</b>	Vacuum infusion composite
<b>Dek materiaal</b>	Aluminium
<b>Afwerking dek</b>	Flexiteek Cork
<b>Antifouling (jaar)</b>	2025
<b>Raammateriaal</b>	Double glazed 270°
<b>Dekluik</b>	6 x Lewmar deckhatches
<b>Patrijspooten</b>	4 x Lewmar
<b>Isolatie</b>	74mm for hull and 37mm for deck
<b>Brandstoftank (liter)</b>	350
<b>Brandstoftank 2 (liter)</b>	350
<b>Brandstof dagtank (liter)</b>	250
<b>Drinkwatertank (liter)</b>	2 x 250
<b>Inhoudsmeter (drinkwatertank)</b>	Yes
<b>Vuilwatertank (liter)</b>	250
<b>Stuurwiel</b>	Twin steering in cockpit



**Extra info romp**

Hull has been inspected throughout winter yard period

**Extra info verfsysteem**

Aluminium refreshing treatment has been applied

**Extra info**

Yacht refit managed by professional full time captain

**Extra info**

SALE IN PARTNERSHIP WITH GL YACHTING

## ACCOMMODATIE

**Hutten**

2

**Deksalon**

Located central/starboard on an elevated platform

**Vaste buiskap**

Yes

**Salon**

U-shaped bench with seats

**Stahoogte salon (m)**

<2.0

**Verwarming**

Webasato

**Airco**

6 x 12V electric fans

**Navigatie ruimte**

Forward facing chart table with control panel for instruments

**Achterkajuit**

Custom-fitted technical room - Storage drawers and tool lockers

**Ombouwbare kooi**

Saloon table convertible double bed

**Openslaande deur naar kuip**

Yes

**Keuken**

Kitchen unit located portside hull

**Aanrechtblad**

Yes

**Spoelbak**

2 x stainless steel integrated into resin worktop

**Kooktoestel**

Gas hob on gimble

**Oven**

Gas

**Afzuigkap**

Yes

**Gasdetector**

Carbon Monoxide

**Koelkast**

Double sliding fridge

**Vriezer**

12V VITRIFRIGO drawer freezer

**Warmwatersysteem**

40L

**Eigenaarshut**

Forward

**Lengte bed (m)**

Central double bed

**Kledingkast**

1x hanging cupboard 1 x hanging cupboard with shelves

**Badkamer**

En-suite



<b>Toilet</b>	Yes
<b>Toilet Systeem</b>	Electric JABSCO in aft head Manual in forward head
<b>Douche</b>	Yes
<b>Gastenhut 1</b>	Port aft
<b>Lengte bed (m)</b>	Double bed
<b>Kledingkast</b>	Hanging shelves and cupboard
<b>Extra info</b>	1 x watertight hatch on aft bulkhead to access stern compartment
<b>Gastenhut 2</b>	Pilot Berth port-side
<b>Lengte bed (m)</b>	Single
<b>Wasmachine</b>	Yes
<b>Extra info</b>	Each of cabins have Lee Cloths fitted

## MOTOR(EN)

<b>Aantal motoren</b>	1
<b>Merk</b>	Volvo Penta
<b>Type</b>	D2-75
<b>Pk</b>	75
<b>kW</b>	55.20
<b>Brandstof</b>	diesel
<b>Geïnstalleerd in jaar</b>	2025
<b>Gereviseerd in jaar</b>	JULY 2025 NEW
<b>Koelsysteem motor</b>	Freshwater cooling
<b>Aandrijving</b>	schroefas
<b>Motorbediening</b>	Shaft drive
<b>Boegschroef</b>	Yes including 2 AGM 12V batteries with dedicated charger
<b>Type schroef</b>	Folding
<b>Elektrische lenspomp</b>	1 x primary 1 x sail locker 1 x forward compartment
<b>Bilge alarm</b>	Yes
<b>Generator</b>	2nd engine Alternator replacing need for generator
<b>Generator 2</b>	Watt and Sea Hydrogenerator
<b>Accu's</b>	4 x Lithium electricity batteries 12V GE45 producing 800 amps



Lichtaccu	3 x Lithium
Acculader	Yes
Omvormer	Yes
Acculader/omvormer	Yes
Zonnecellen	3 x 400W Seatronic panels with Victron BT monitoring controllers
Walstroom	Cable 220V
Watermaker	Yes
Extra info	Upgraded Lithium battery system with additional batteries
Extra info	2 Engine Alternators fitted to charge batteries and DC Systems

## NAVIGATIE

Electrisch kompas	Precision 9 compass
Multi control display	B&G electronic pack 2 x 12" screens
Dieptemeter	Yes
Windmeetset	Yes
Repeaters	3 x Triton display units
Marifoon	Fusion RA770
Autopilot	NAC3 Autopilot drive with spare installed
Windvaan besturing	Yes
Radar	4G Broadband radar
GPS	ZG100
Plotter	B&G
Wifi antenne	Yacht router AMPLI and WIFI booster
AIS ontvanger	Yes
AIS transponder	NAIS 500 classB
Radio ontvanger	Yes
Epirb	Yes

## UITRUSTING

Vaste ramen	Yes
Vaste buiskap	Doghhouse



<b>Bimini</b>	Yes
<b>Kuipkussens</b>	Yes
<b>Kuiptafel</b>	Teak folding table with cover
<b>Zwemtrap</b>	Yes
<b>Anker</b>	35kg Spade galvanized
<b>Ankerketting</b>	100m galvanized 10mm chain with shackles and snubber line
<b>Ketting teller</b>	Yes
<b>Bijboot</b>	Highfield Hypalon 290
<b>Buitenboordmotor</b>	Tohatsu 6 HP
<b>Buitenboordmotorsteun</b>	Lift
<b>Reddingsvlot</b>	Yes serviced 2025
<b>Zwemvesten</b>	Yes serviced 2025
<b>Reddingsboei</b>	Yes serviced 2025
<b>Stootkussens</b>	Yes with spares
<b>Landvasten</b>	Yes with spares
<b>Reserve onderdelen</b>	All in lockup. Further details upon request
<b>Gereedschap</b>	Various necessary tools in starboard side technical room
<b>Radio</b>	Fusion RA770 BT
<b>Kuipspeakers</b>	2 x outside loudspeaker (Fusion)
<b>Speakers in salon</b>	2 x inside loudspeaker (Focal)
<b>Brandblusser</b>	4 x
<b>Extra info</b>	Chain rinsing pump in sail locker

## TUIGAGE

<b>Tuigage</b>	Single strand stainless steel wire
<b>Staad want</b>	Performance rigging package
<b>Materiaal mast</b>	Aluminium
<b>Zalingen</b>	2 pairs
<b>Grootzeil</b>	Fully battened in Hydranet with Triradial cut
<b>Doorgelat grootzeil</b>	Yes
<b>Rolgiek</b>	Aluminium alloy anodised boom



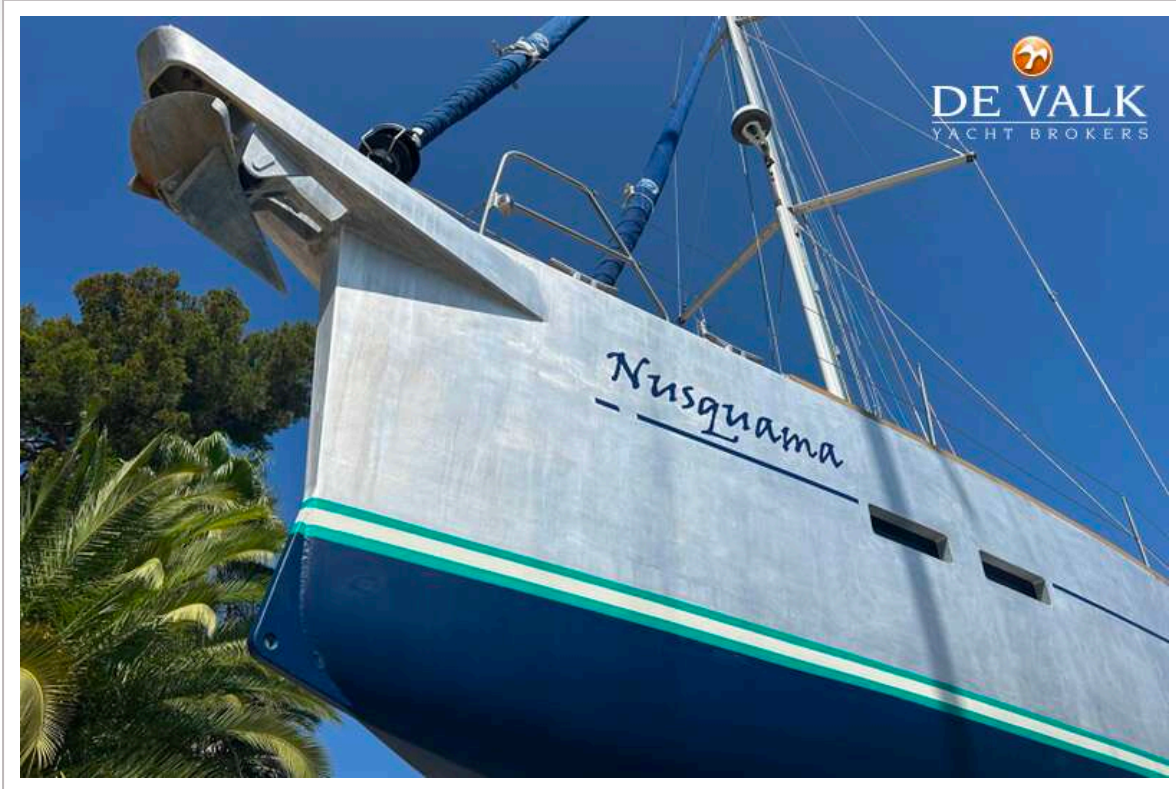
<b>Schoenerzeil</b>	Incidence Hydranet staysail on a furler
<b>Fok</b>	Incidence Hydranet solent
<b>Gennaker</b>	Yes on a sock
<b>Reefinstallatie</b>	4 reefs possible
<b>Primaire schootlieren</b>	2 x electric ST50 2 speed on cockpit coamings
<b>Secondaire schootlieren</b>	2 x electric ST45 2 speed
<b>Spinnakerboom</b>	CARBONE Aluminium pole with fittings
<b>Extra info</b>	Removable textile protection for watch position under coach roof
<b>Extra info</b>	Centreboard with 2.9m draft when down - 2.0m when lifted





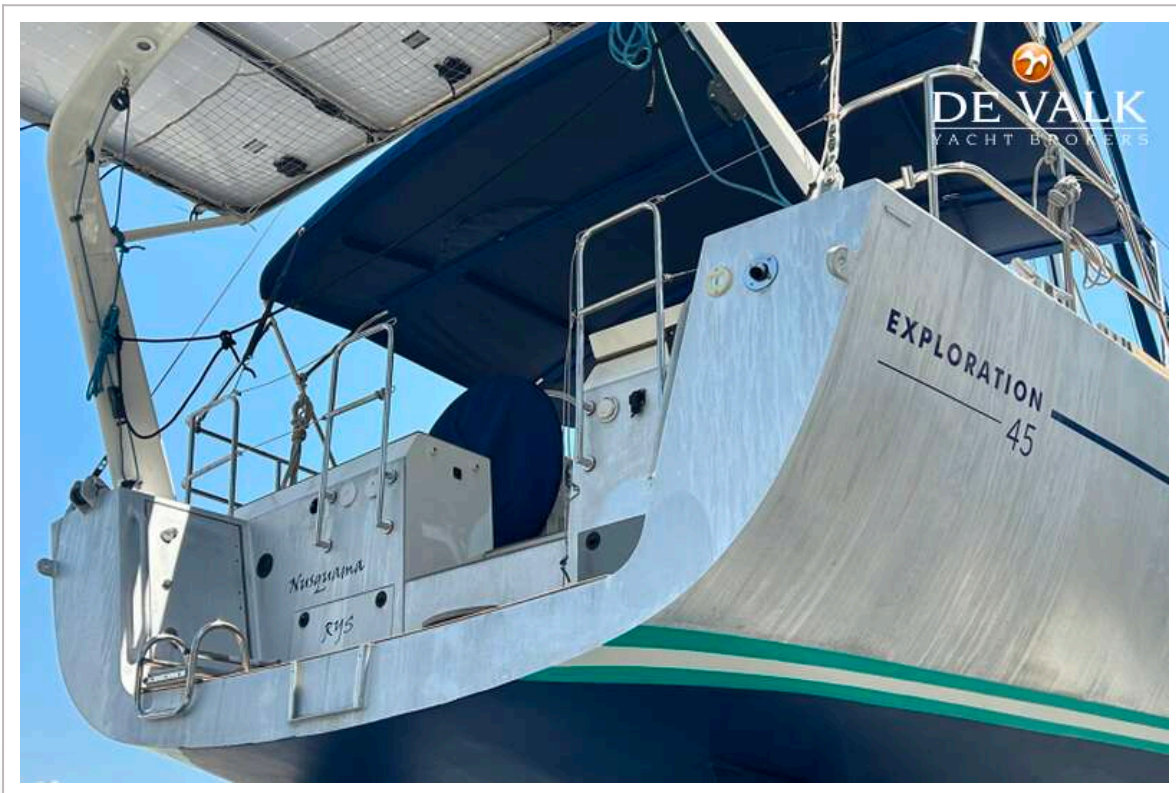
# GARCIA EXPLORATION 45





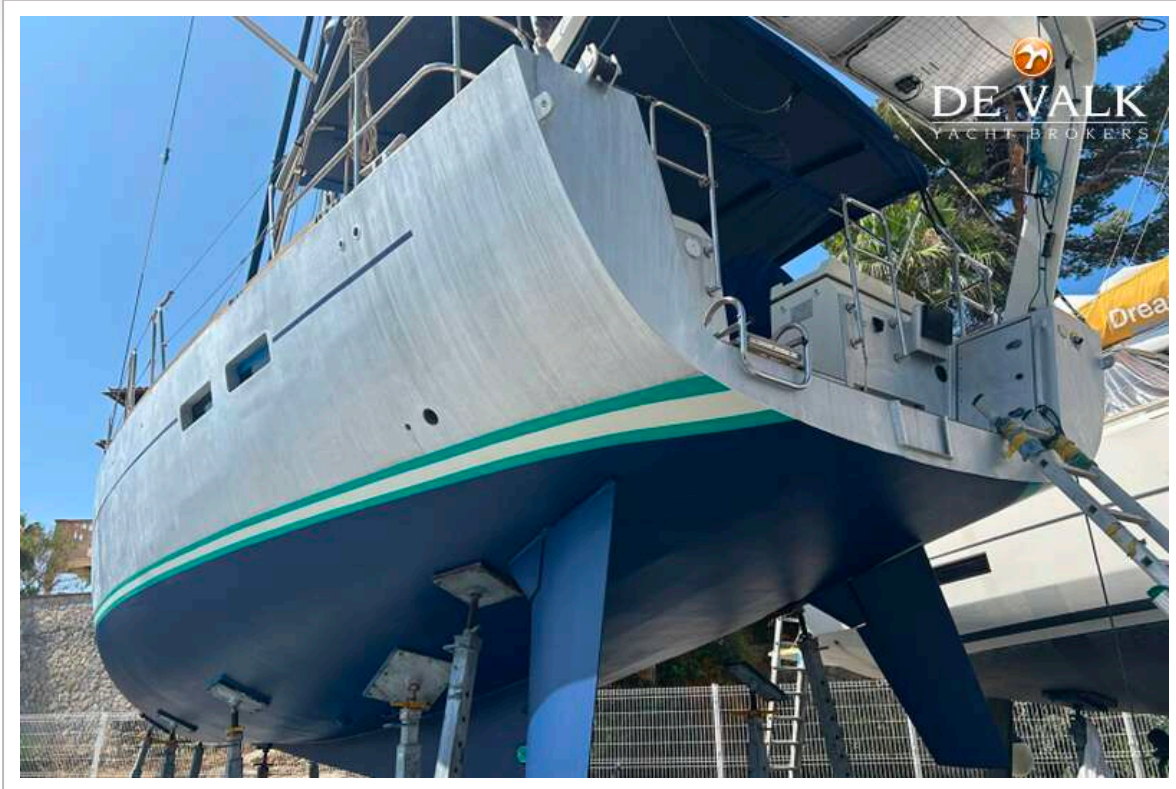


# GARCIA EXPLORATION 45



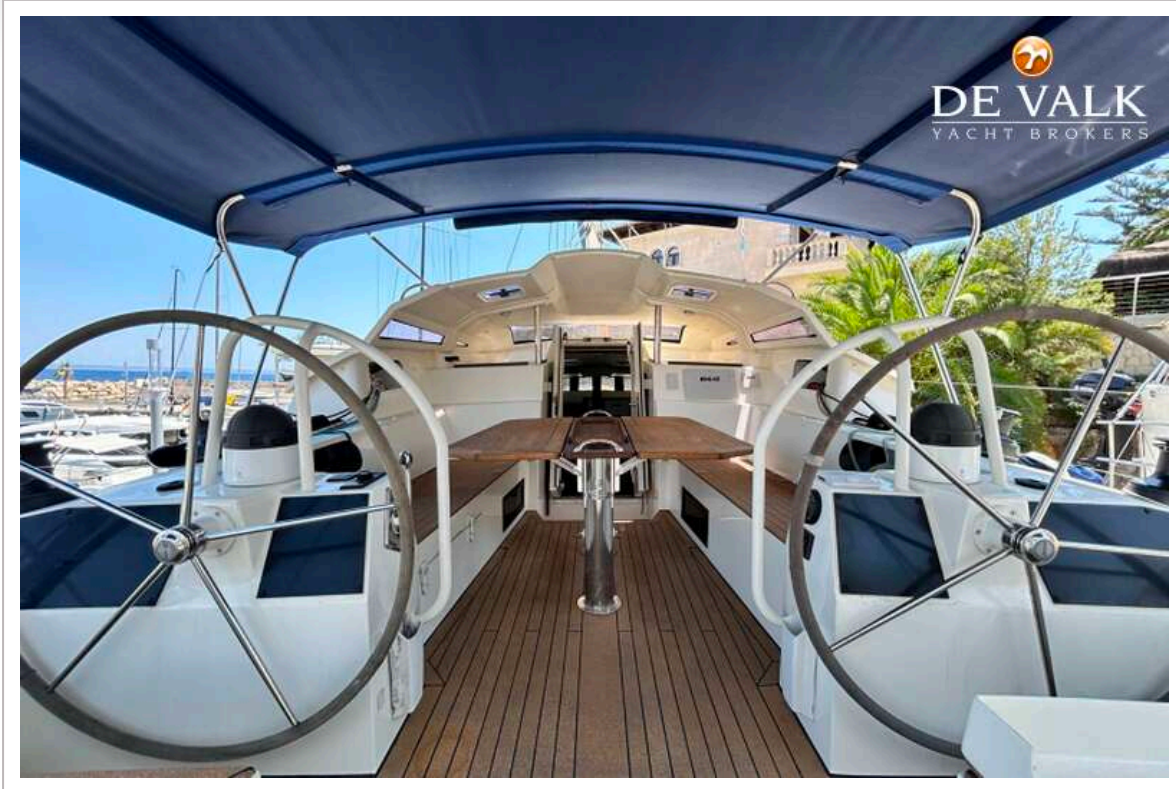


# GARCIA EXPLORATION 45





# GARCIA EXPLORATION 45

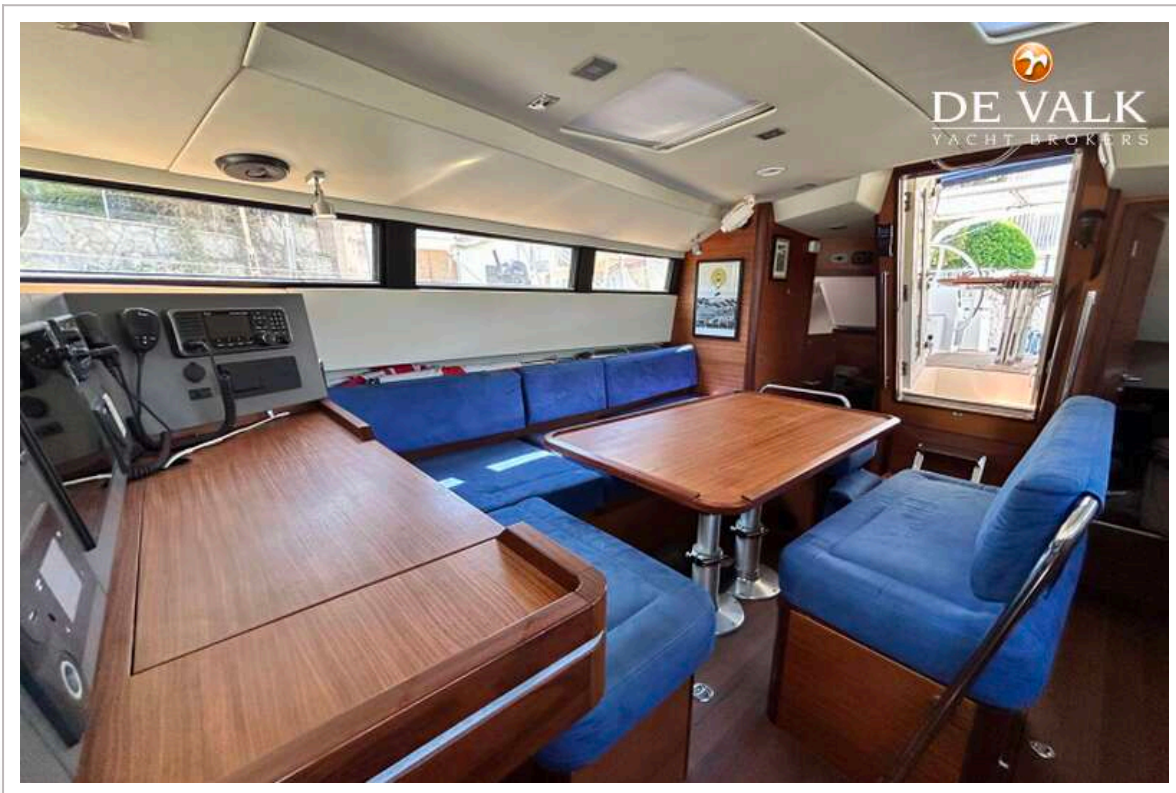


# GARCIA EXPLORATION 45

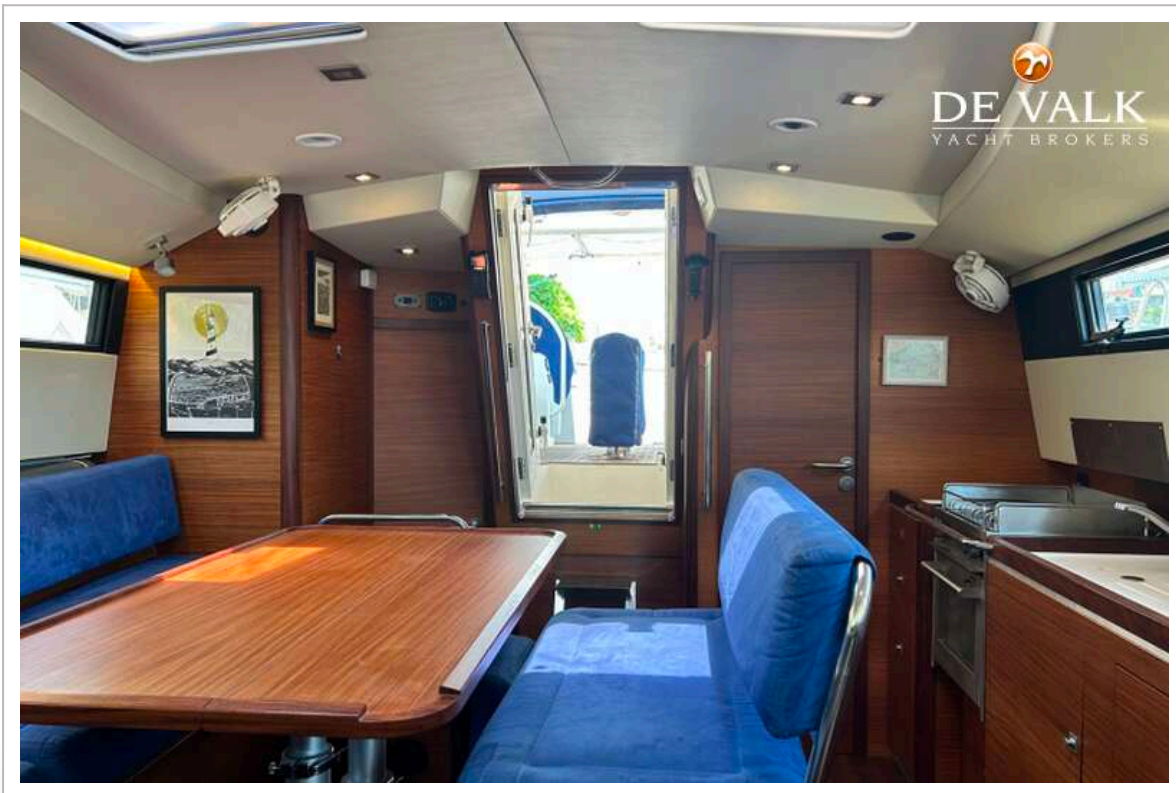




# GARCIA EXPLORATION 45

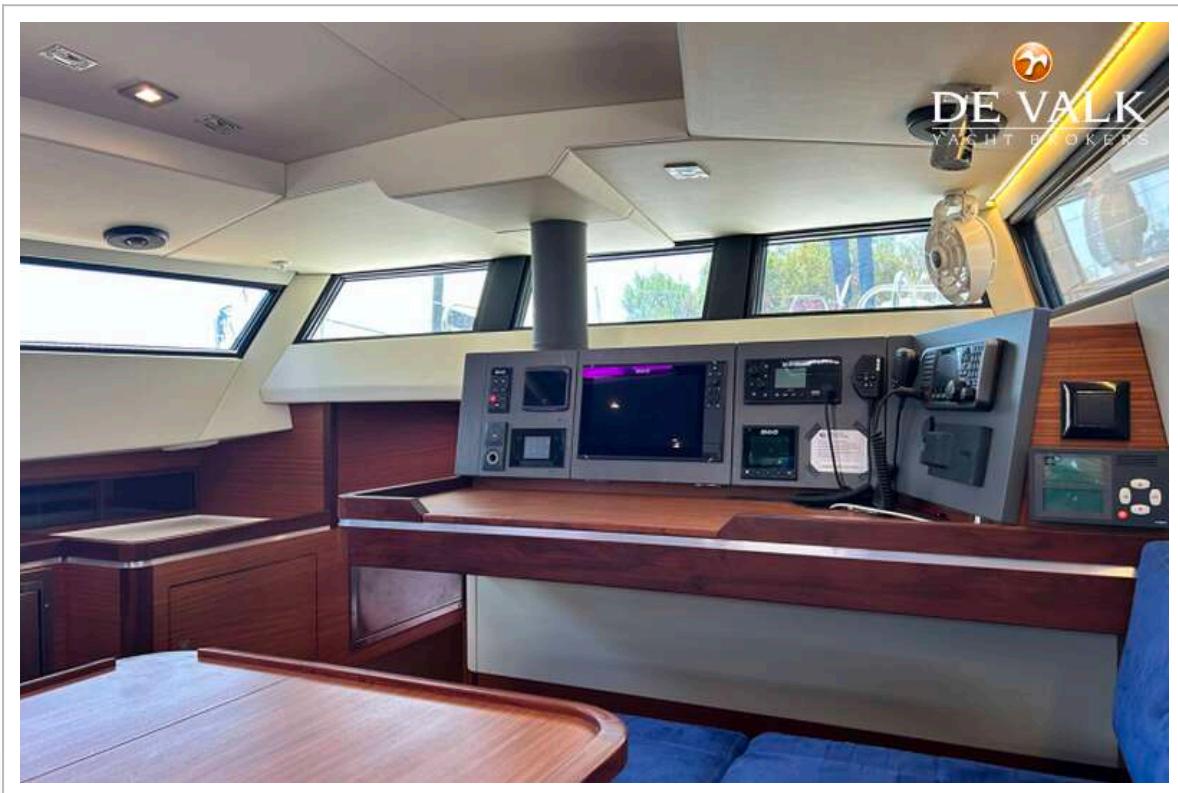


# GARCIA EXPLORATION 45

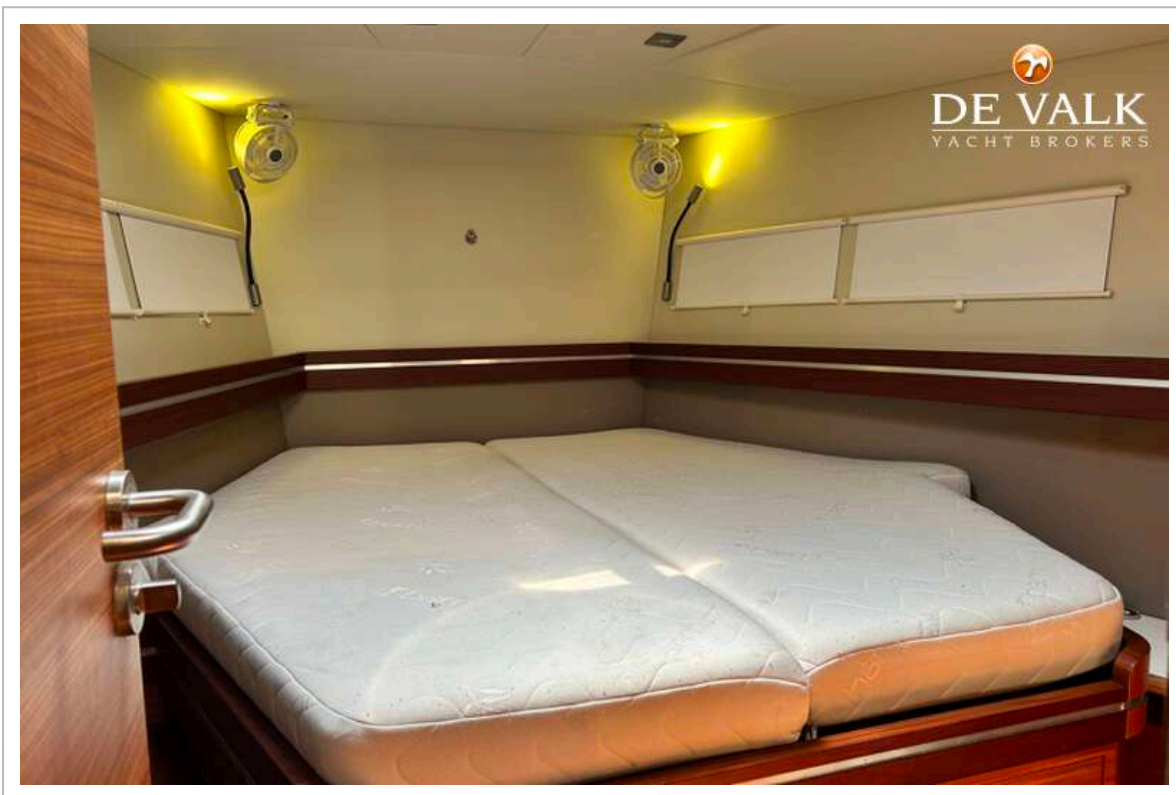
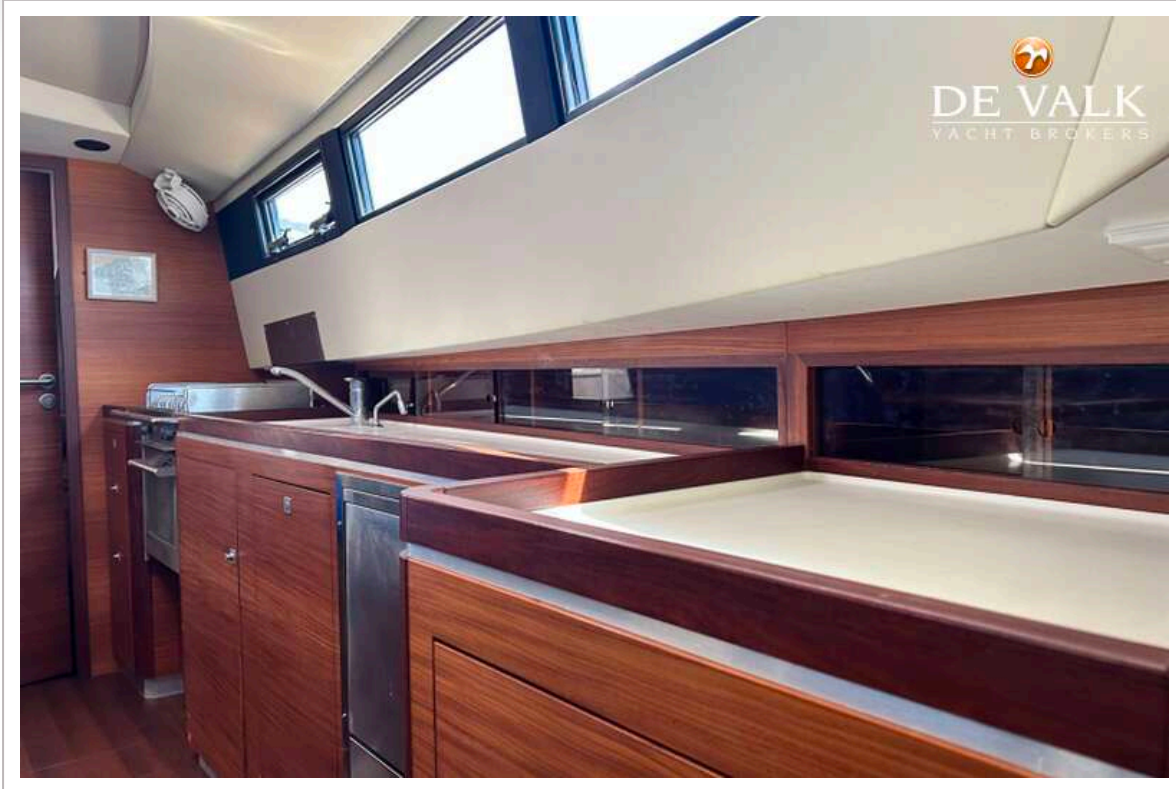




# GARCIA EXPLORATION 45

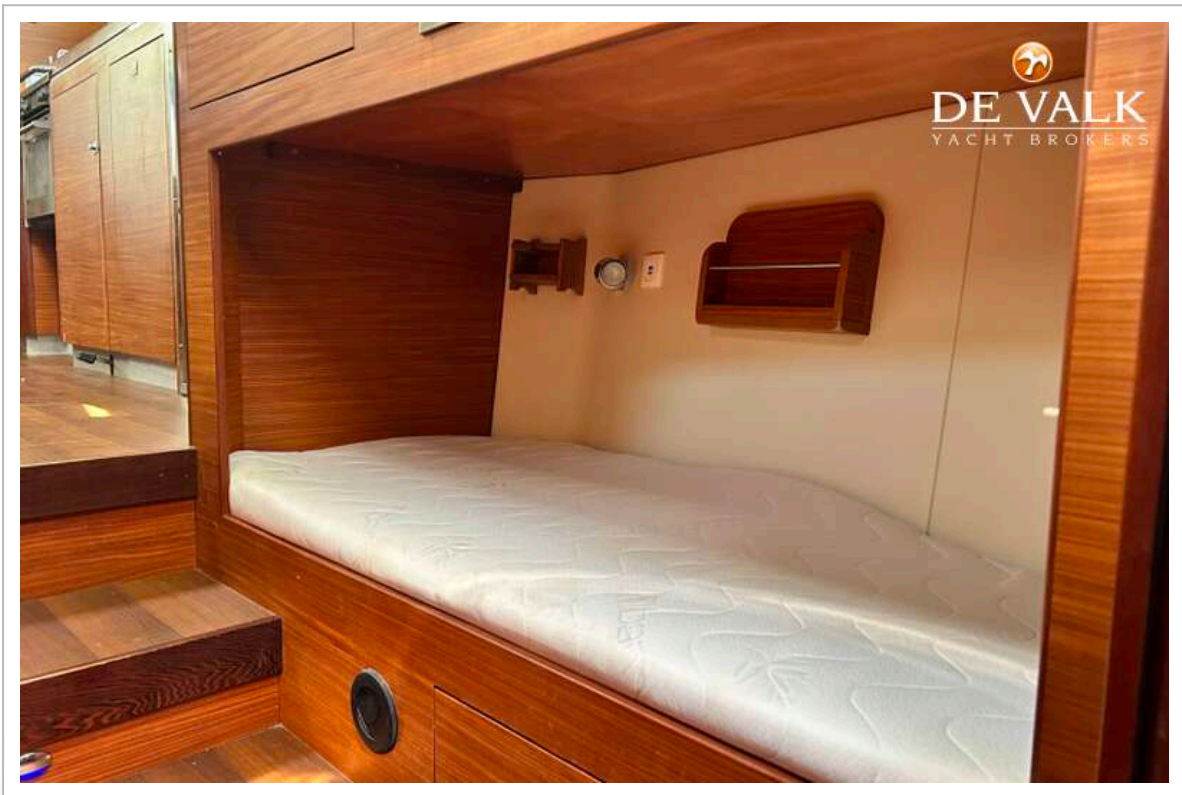
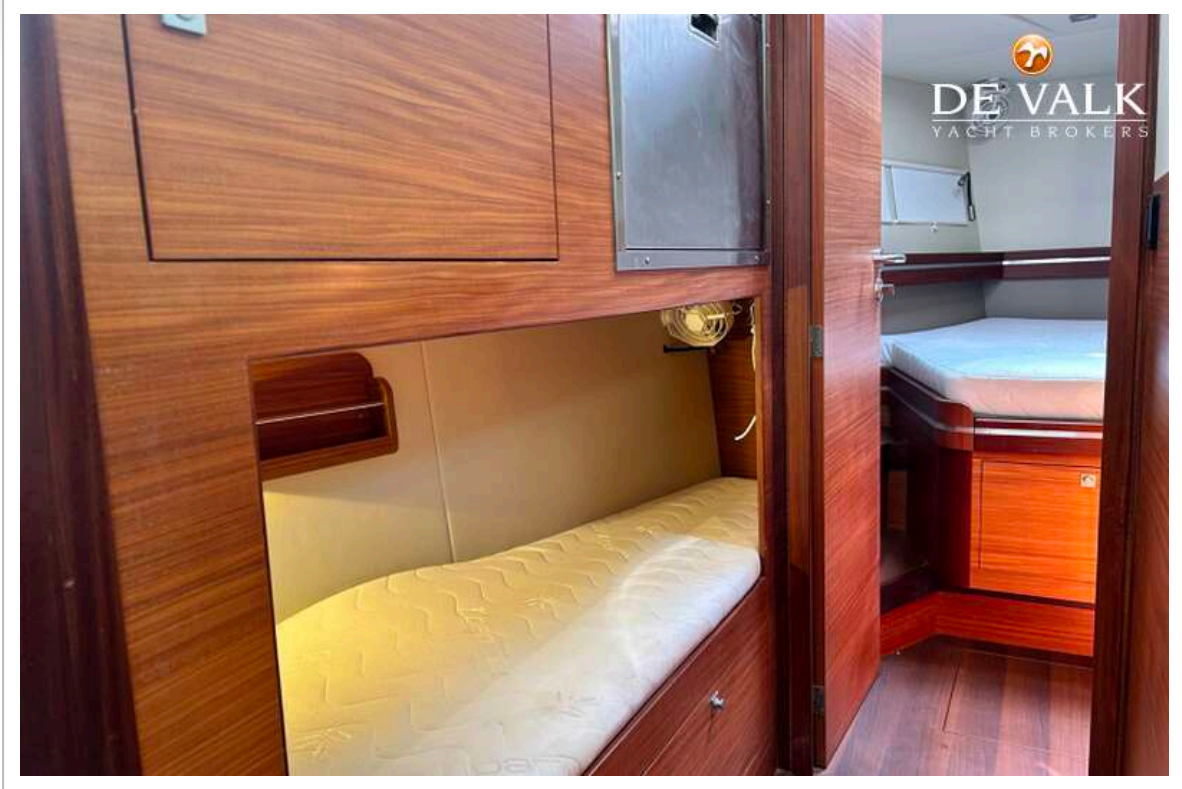


# GARCIA EXPLORATION 45





# GARCIA EXPLORATION 45



# GARCIA EXPLORATION 45

