



DE VALK
YACHT BROKERS



TRULY CLASSIC 90



DE VALK
YACHT BROKERS

VAN DE MAKELAAR

Nereids Custom Built 27m sailingyacht offers timeless design, solid engineering, and luxury throughout. Designed for long-range cruising with generous living spaces, 3 elegant guest cabins, and full crew quarters. Refitted in 2022 with upgrades to navigation, interiors, and mechanical systems. Ideal for private use or charter. Impeccably maintained and ready for her next owner. This yacht will be auctioned soon at Bright Auctions, see for more info:

Eric Lamers

SPECIFICATIES

Afmetingen	27.00 x 6.00 x 3.05 (m)	Bouwer	Nereids Yachts
Bouwjaar	2008	Hutten	3
Materiaal	Aluminium	Slaapplaatsen	6
Motor(en)	1 x MAN DOOSAN/Daewoo diesel	Pk/Kw	230.00 (pk), 169.28 (kw)
Vraagprijs	€ 210.000 (BTW Niet betaald)	Ligplaats	contact Antibes

CONTACT

Kantoor	De Valk Antibes	Telefoon	+33 492 91 0202
Adres	2, Avenue de Verdun 06600 Antibes FR	E-mail	antibes@devalk.nl

DISCLAIMER

Hoewel er uiterste zorg besteed is aan de correctheid, volledigheid en actualiteit van onze informatie kunnen hieraan geen rechten worden ontleend.



TRULY CLASSIC 90

ALGEMEEN

Model	TRULY CLASSIC 90
Type	zeiljacht
Lengte (m)	27,00
Breedte (m)	6,00
Diepgang (m)	3,05
Stahoogte (m)	2,00
Bouwjaar	2008
Gebouwd door	Nereids Yachts
Land	Tsjechië
Ontwerper	Julius Strawinsky (ext)/P.Raemdonc (int)
Bruto tonnage	43
Romp materiaal	aluminium
Romp kleur	wit
Dek materiaal	teak
Afwerking kuip	teak
Brandstoftank (liter)	2200 L
Drinkwatertank (liter)	2 x 750 L, port and starboard
Vuilwatertank (liter)	150L + 300L
Grijswatertank (liter)	800L
Stuurwiel	ja
Extra info	Built in 2008 / 2018 (refit interior and deck), 2020 (refit tech

ACCOMMODATIE

Hutten	3
Slaapplaatsen	6
Bemanningshut	2
Verwarming	ja
Airco	ja
Navigatie ruimte	ja
Keuken	Large and fully equipped



TRULY CLASSIC 90

Aanrechtblad	roestvast staal
Spoelbak	ja
Kooktoestel	inductie 5 plates 220V 50hz
Oven	Siemens 220V 50hz
Magnetron	Miele 220V 50hz
Koelkast	24V DC air cooled (2x)
Vriezer	24V DC air cooled (2x)
Wijnkoeler	Miele 220V 50hz
Warmwatersysteem	ja
Vaatwasser	Miele 220V 50hz
Eigenaarshut	Primary suite with a queen size bed and en-suite bathroom
Badkamer	en suite
Gastenhut 1	tweepersoonsbed With en-suite bathroom facilities
Gastenhut 2	tweepersoonsbed With en-suite bathroom facilities
Badkamer	en suite
Badkmaer	ja
Bemanningshut(ten)	ja
Badkamer (bemanning)	ja
Wasmachine	Bosch Series 6 (2022) 220V 50hz
Droger	Bosch Series 2 (2022) 220V 50hz

MOTOR(EN)

Aantal motoren	1
Merk	MAN
Type	DOOSAN/Daewoo
Pk	230
kW	169.28
Brandstof	diesel
Maximale snelheid (kn)	10,5
Kruissnelheid (kn)	8
Bereik (nm)	1500



TRULY CLASSIC 90

Motoruren	3600
Keerkoppeling	DONG-I with 2.09:1 reduction ratio
Type schroef	PYTHON-DRIVE, 3 bladed MAXPROP spindle 110nm
Elektrische lenspomp	ja
Generator	Northern Lights, 16KW, Diesel
Accu's	900Ah
Acculader	ja
Acculader/omvormer	Victron Energy Quattro 24/8000W/200A (2017)
Walstroom	230V AC Ring Main
Watermaker	Pure water 230V AC 50Hz - 120L/H

NAVIGATIE

Kompas	Plastimo Horizon 135
Dieptemeter	Clipper
Marifoon	ICOM HM139B Commandmic
Autopiloot	Jefa
Radar	Raymarine C70
Plotter	ja
Plotter/GPS	Raymarine
Navtex	Furuno NX 700
Extra info	GSM: GMDSSA
Extra info	Satcom: FURUNO SatcomC Iridium Go

UITRUSTING

Bimini	Cream canvas bimini top
Zonnetent	Stainless steel bimini structure with cream canvas bimini top
Kuipkussens	ja
Kuiptafel	ja
Ankerketting	1 CZR 60kg / 1 CQR 80kg / 100m chain 16mm
Ankerlier	Muir VRC-4500 3,500W 24V DC
Reddingsvlot	ja



TV	ja
Radio	ja

TUIGAGE

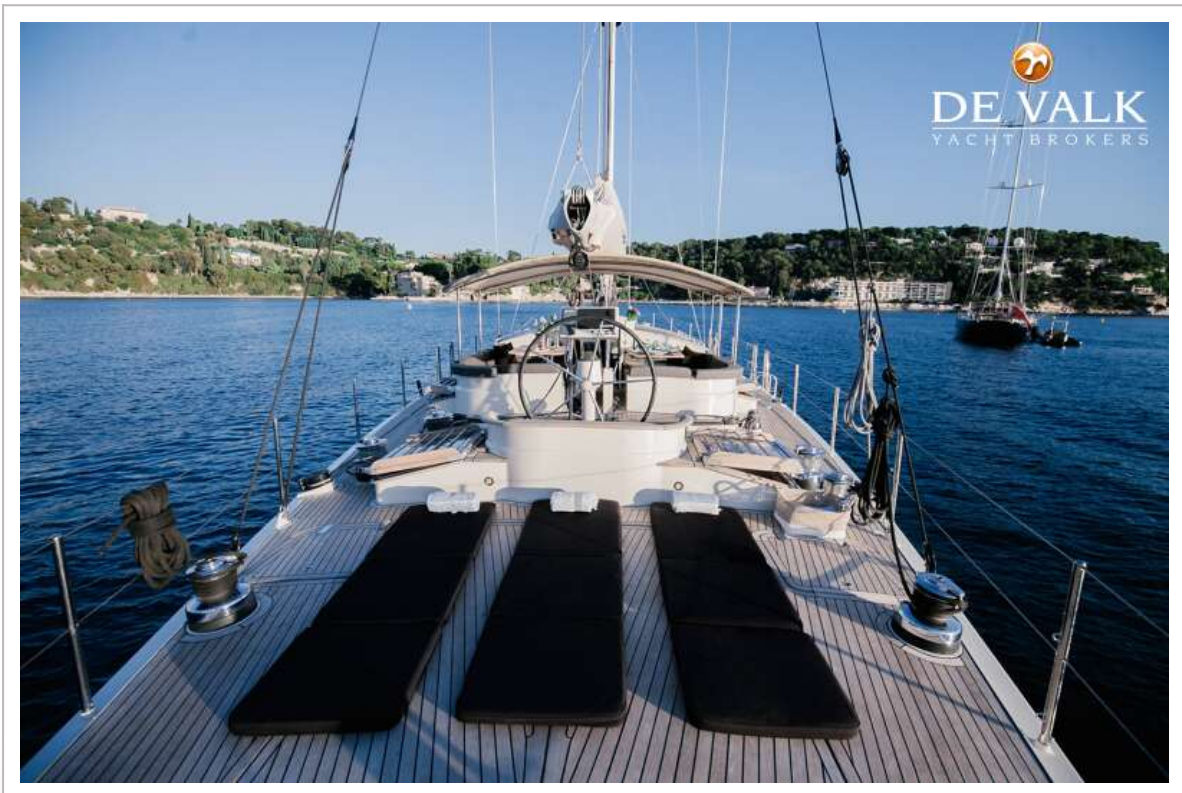
Tuigage	Alucarbon 7/8 fractional rig with lazyjacks
Materiaal mast	Alucarbon white-painted carbon fibre
Grootzeil	Quantum fully battened spectra
Doorgelat grootzeil	Spectra, with 3 reefs fitted
Rolgiek	Alucarbon white-painted carbon fibre with hayrack stracking syst
Genua	Furling hi-cut yankee/genoa spectra carbon
Genua rolreefsysteem	ja
Stagzeil	Spectra carbon, reefable
Grote kluiver	Furling hi-cut
Reefinstallatie	smeerrepn
Giekneerhouder	ja
Primaire schootlieren	ja
Genua schootlieren	ja
Vallieren	ja
Reeflier	ja
Multifunctionele lieren	ANTAL stainless steel, 2xW70 2 speed electric self-tailing,



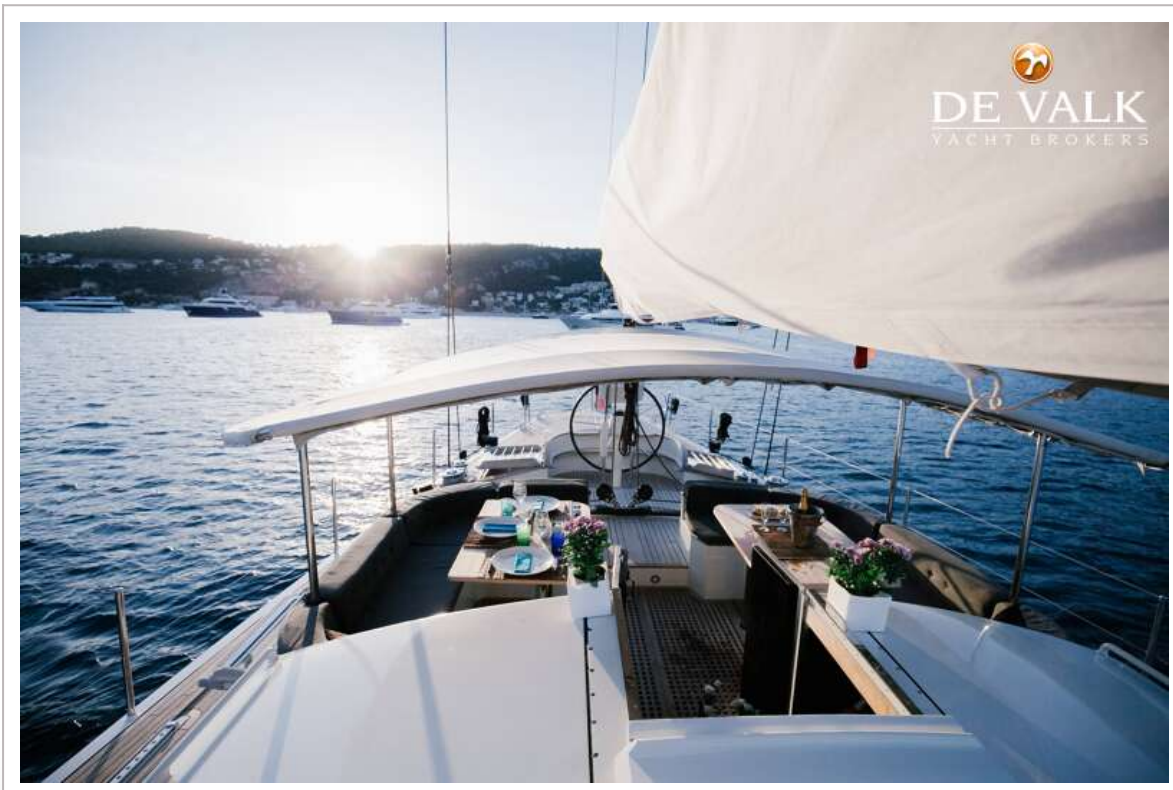
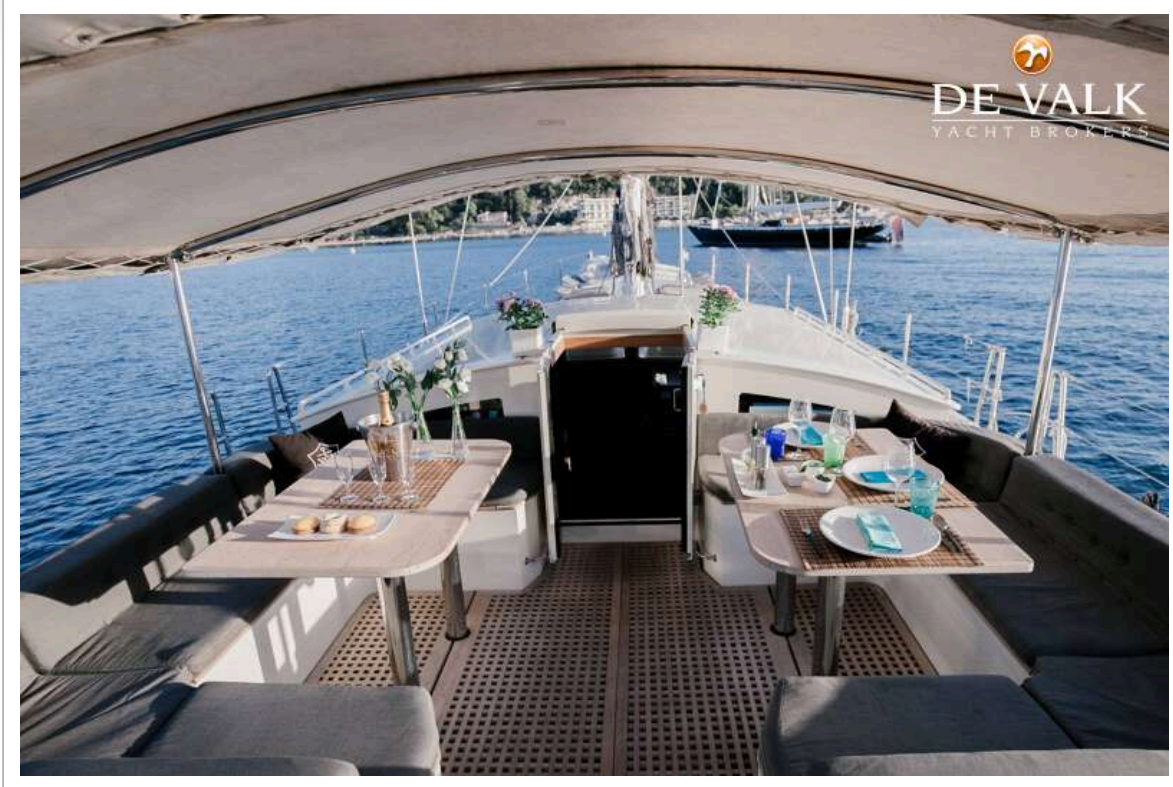
TRULY CLASSIC 90



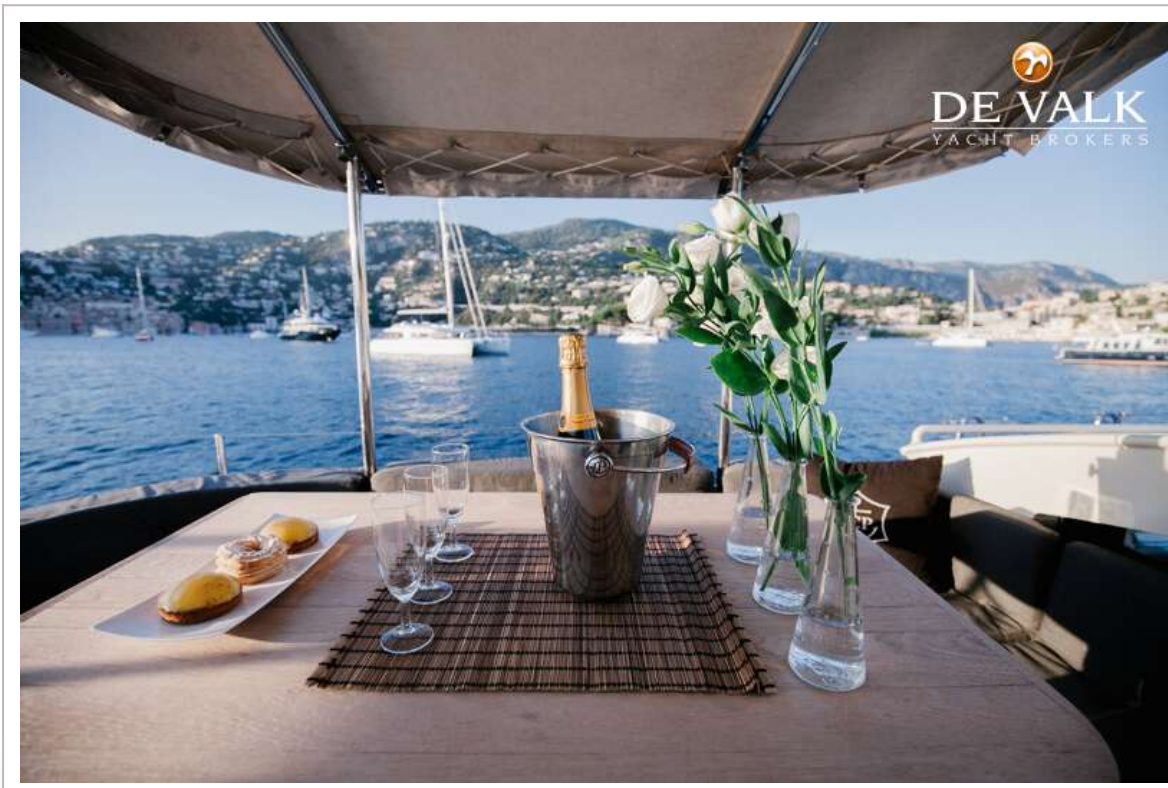
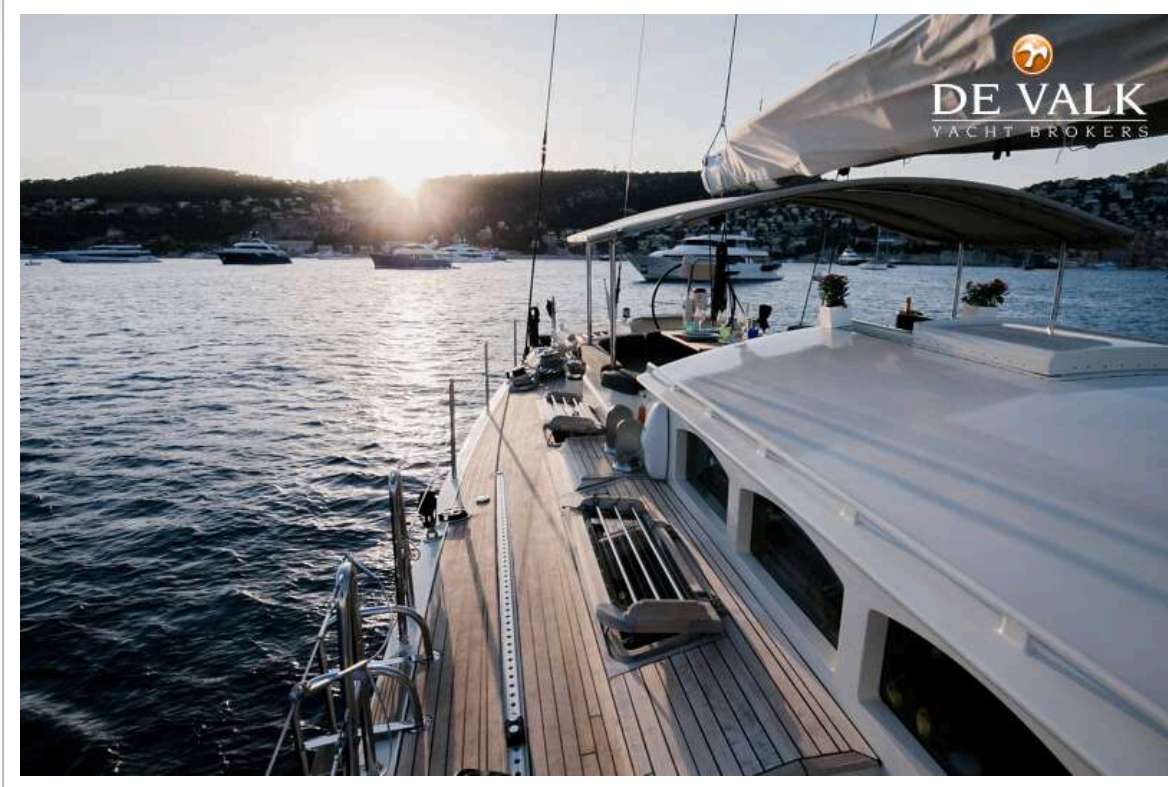
TRULY CLASSIC 90



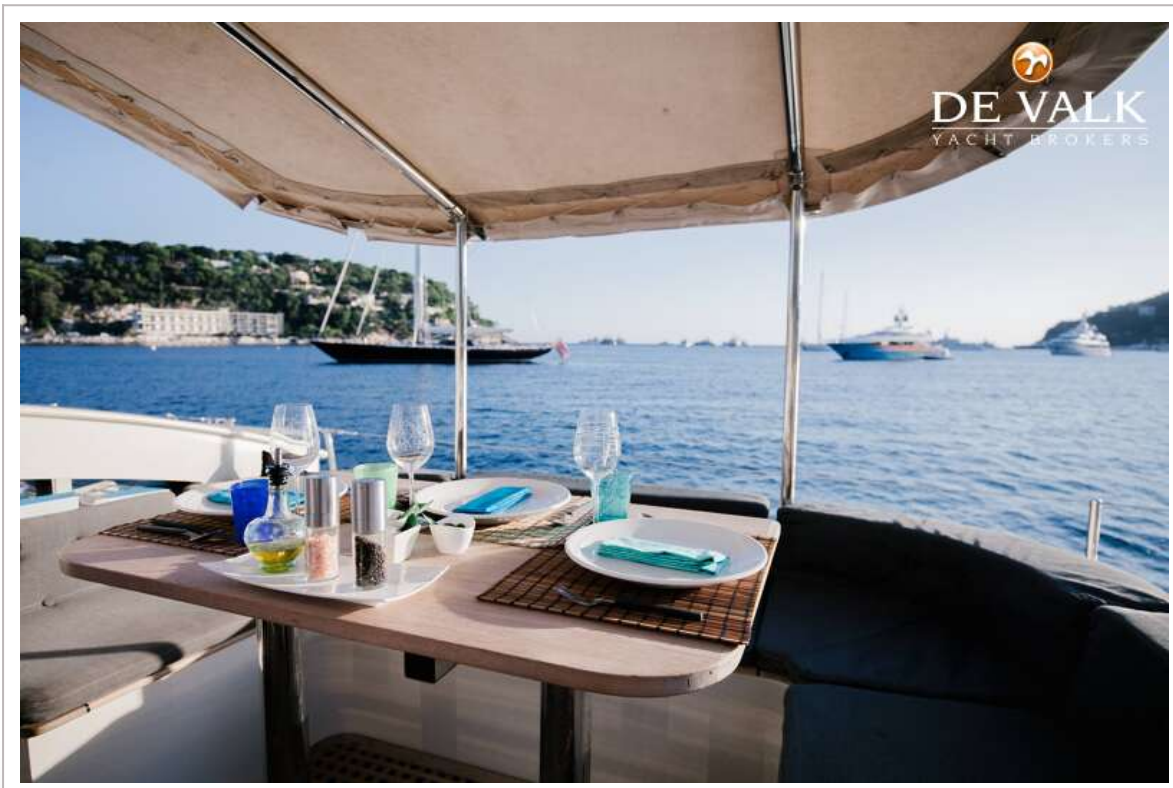
TRULY CLASSIC 90

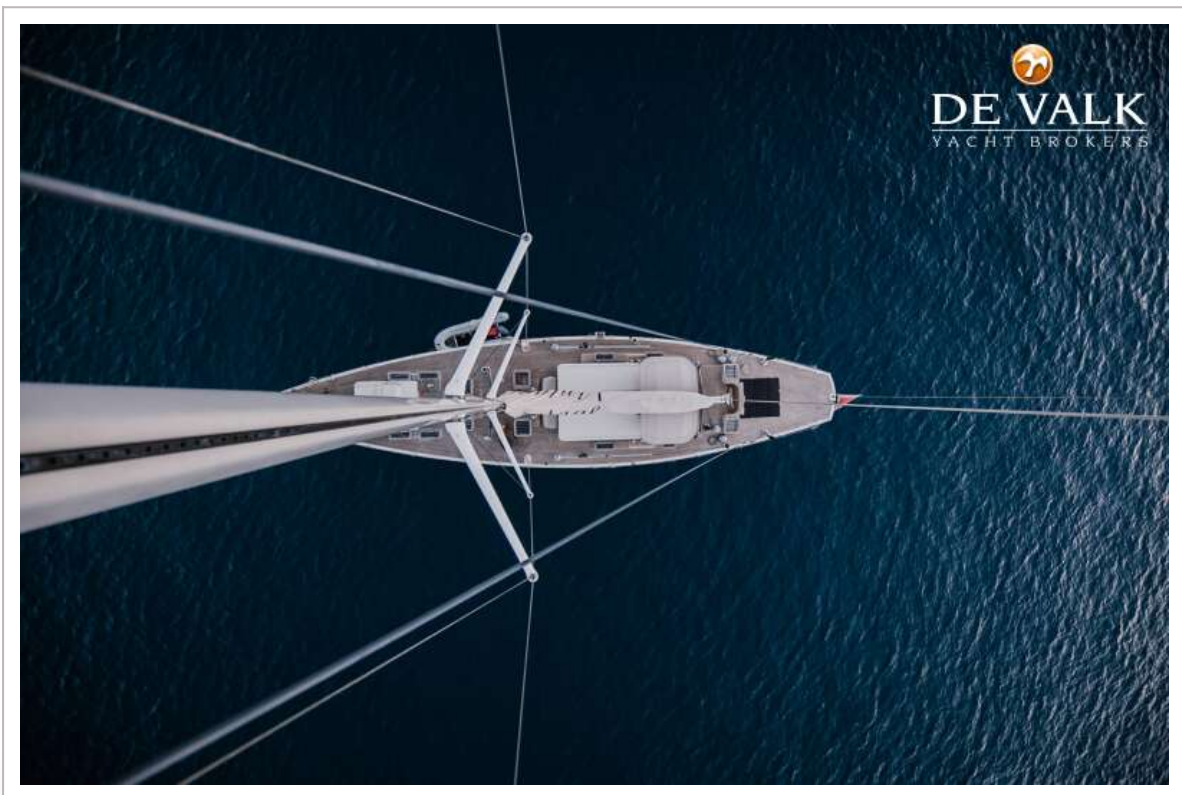


TRULY CLASSIC 90



TRULY CLASSIC 90





TRULY CLASSIC 90

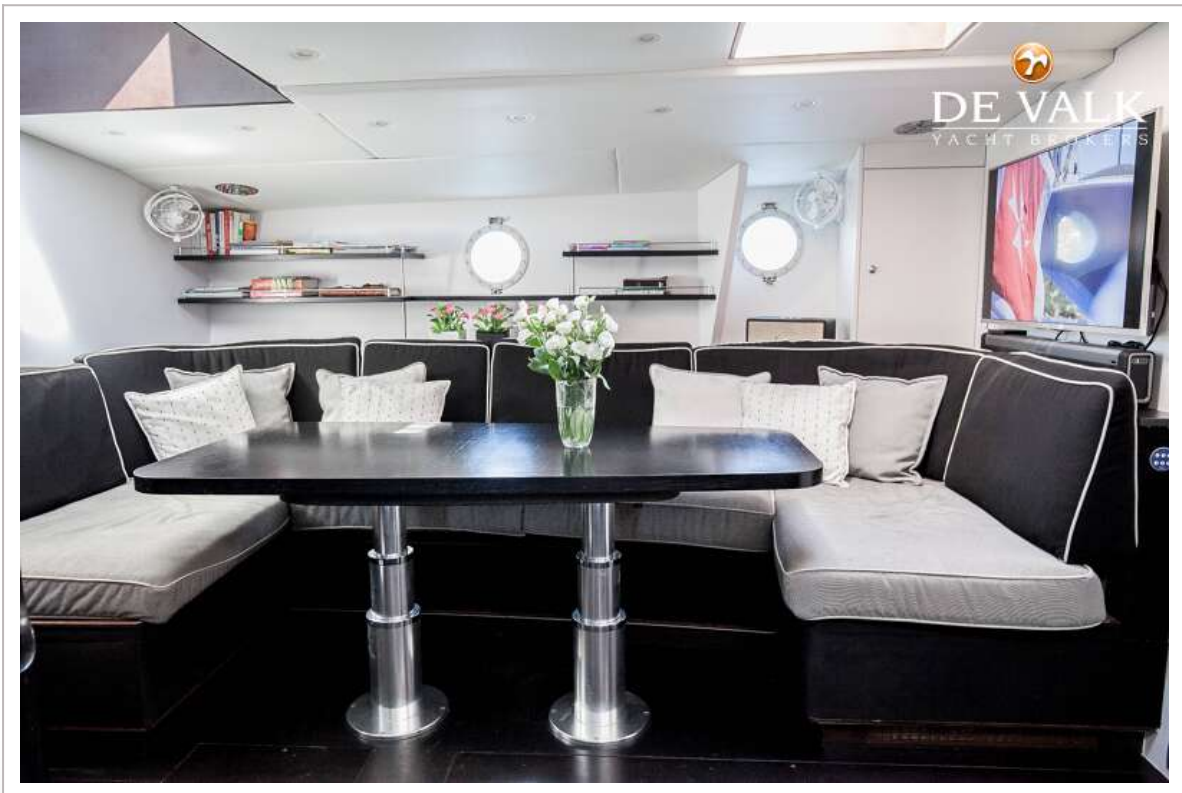




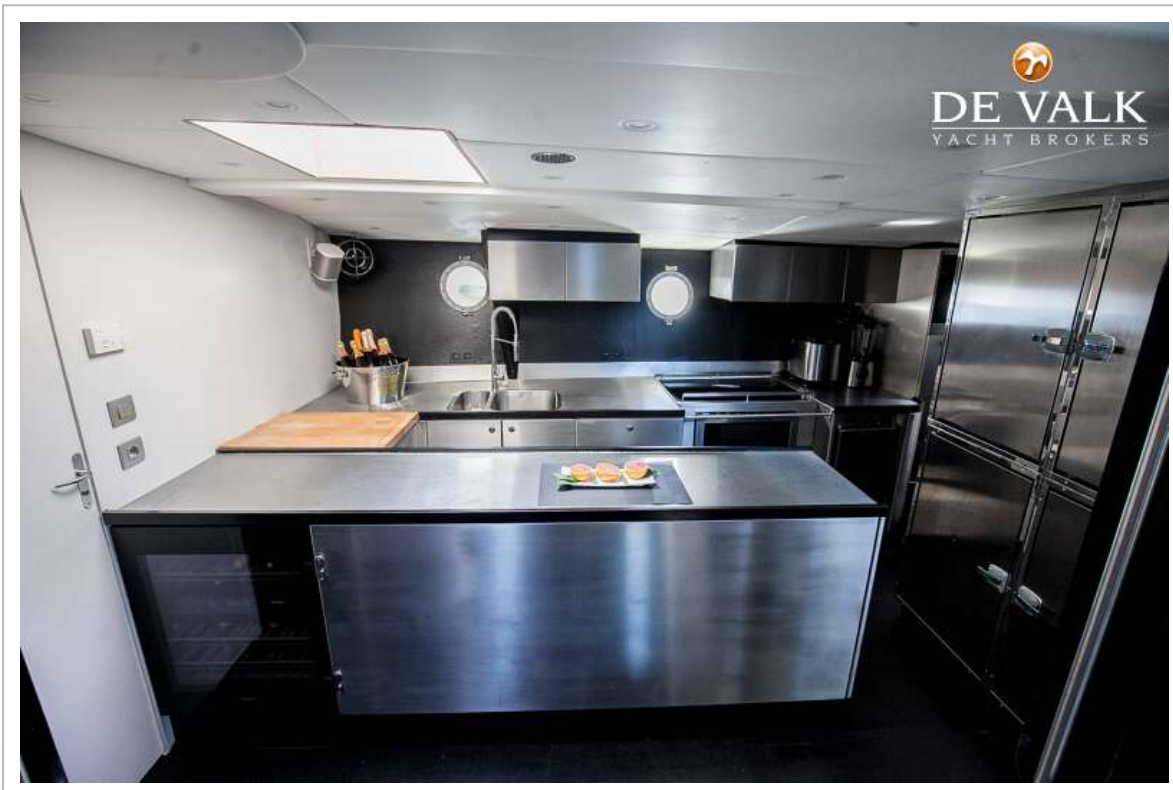
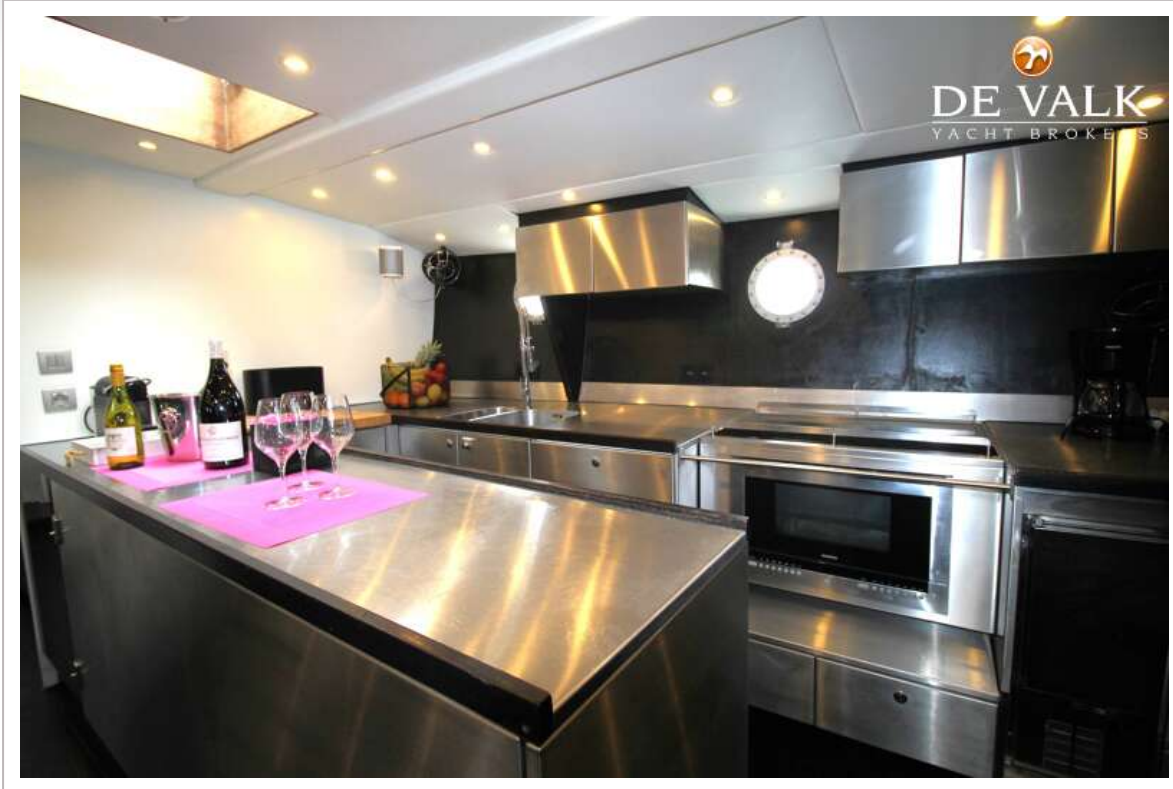
TRULY CLASSIC 90



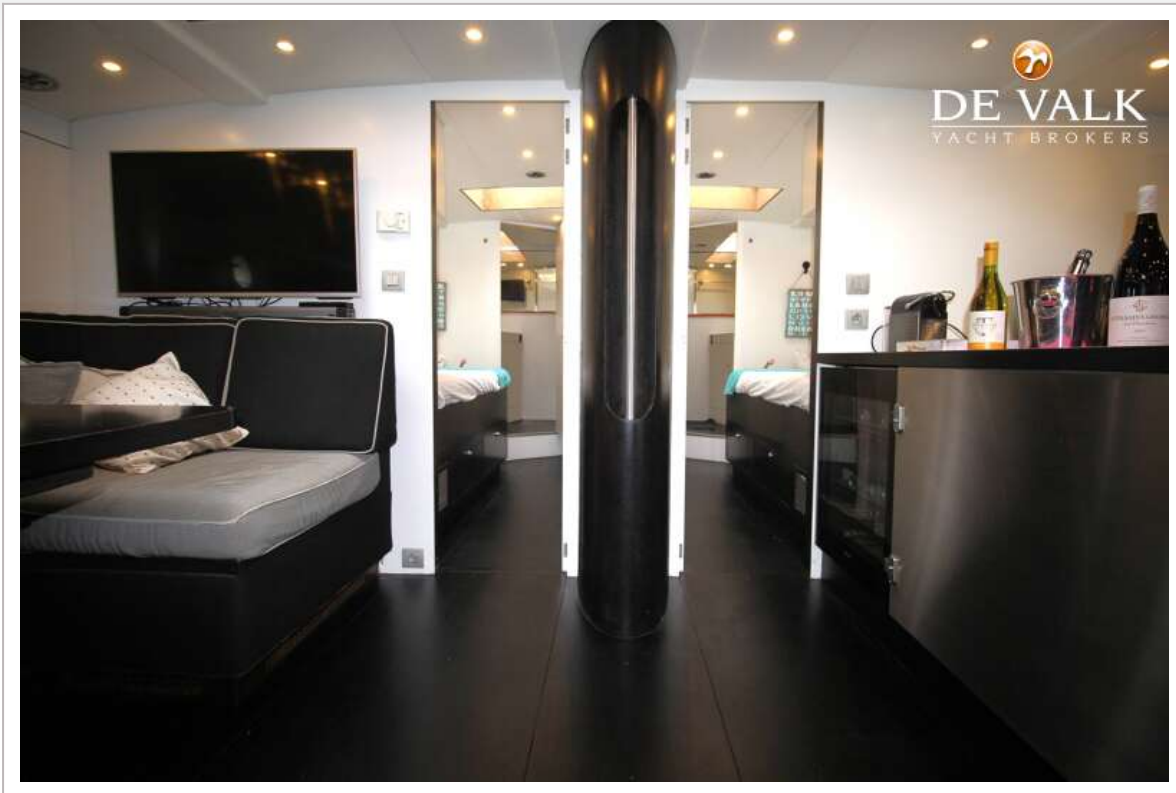
TRULY CLASSIC 90



TRULY CLASSIC 90



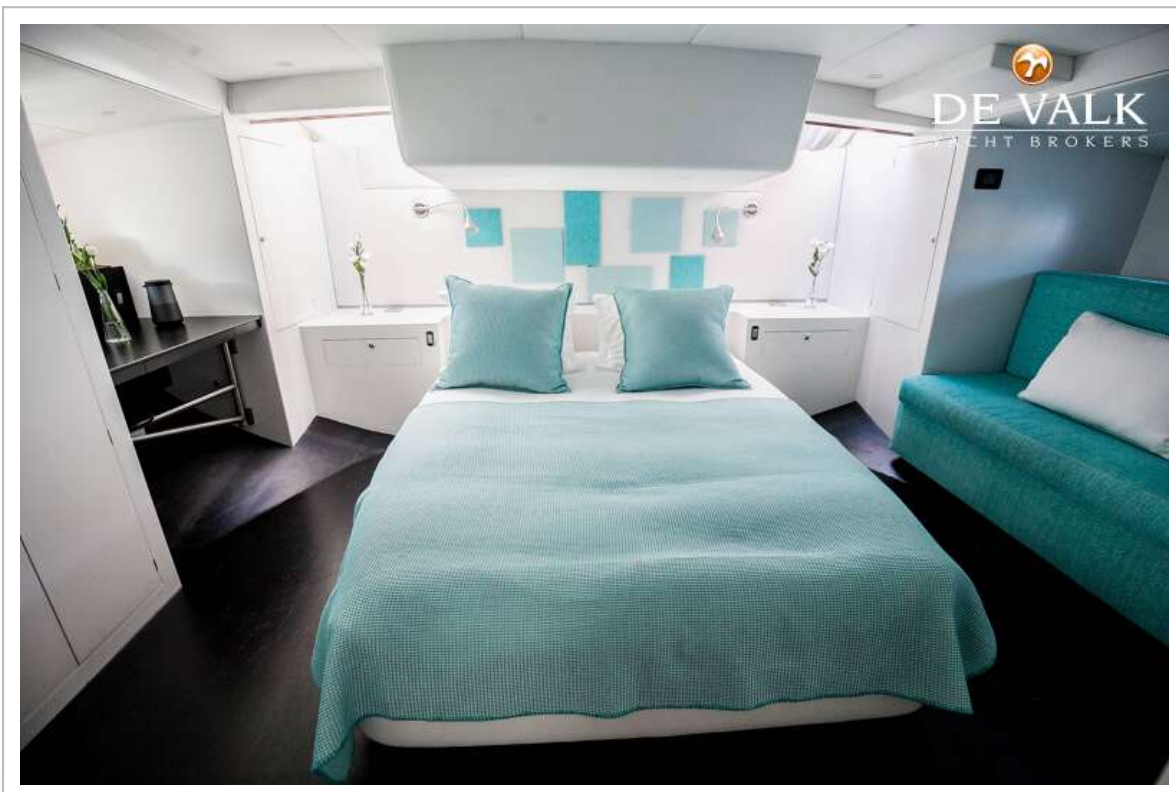
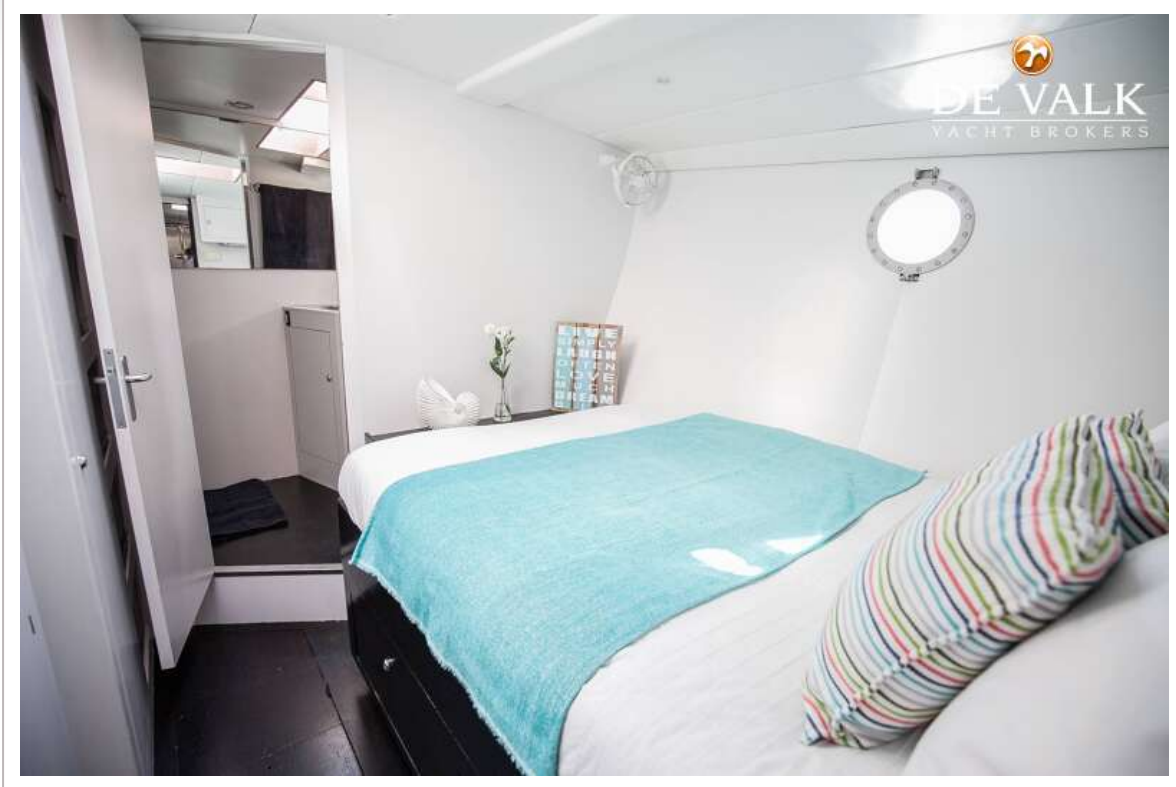
TRULY CLASSIC 90



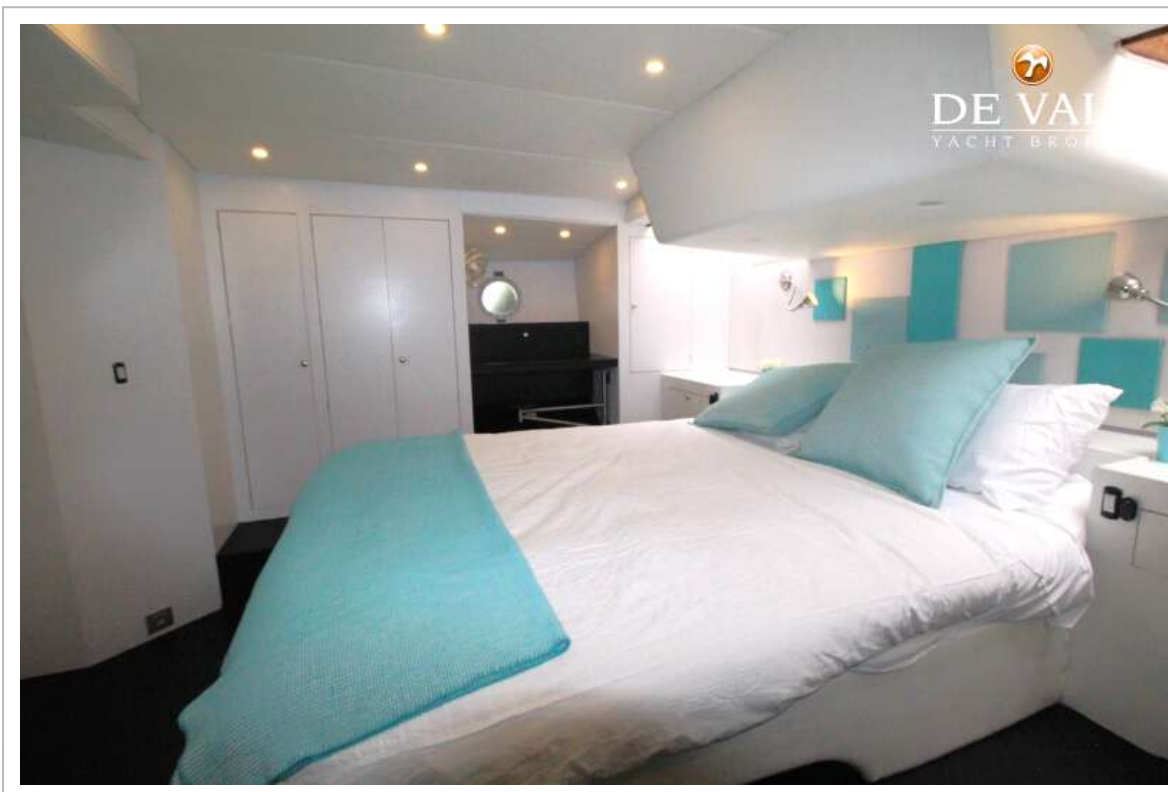
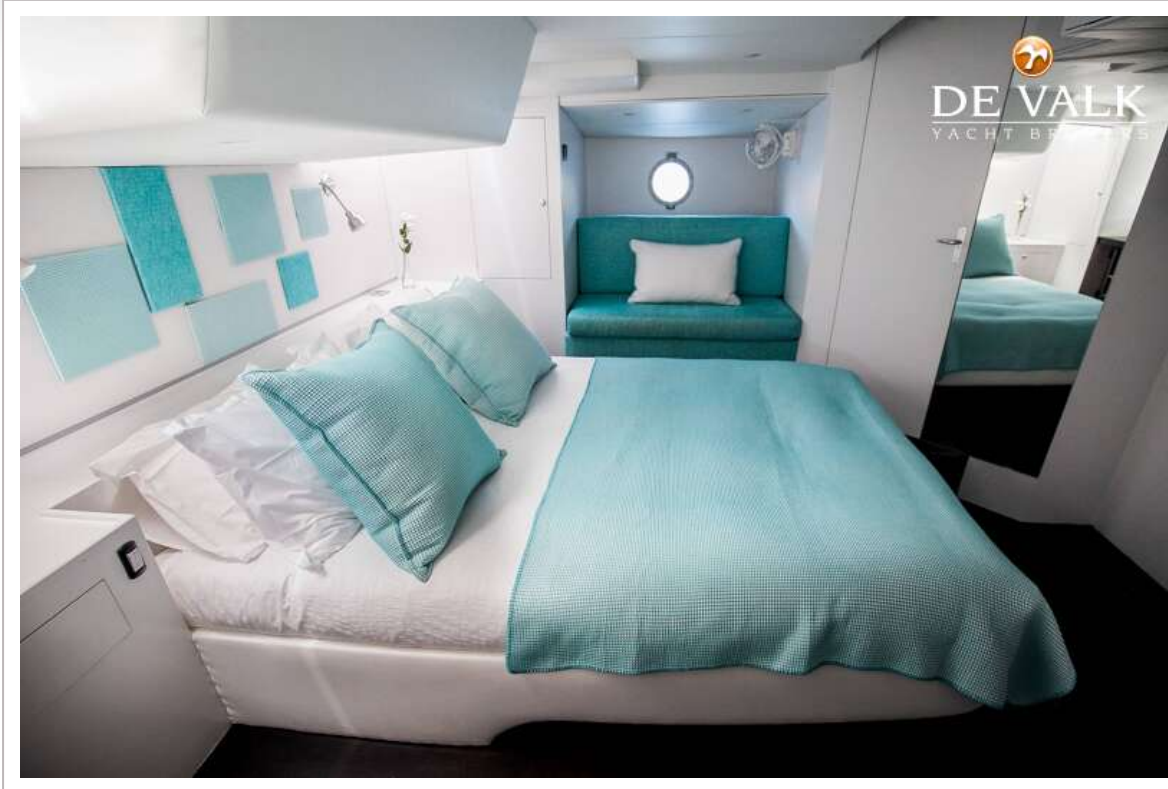
TRULY CLASSIC 90



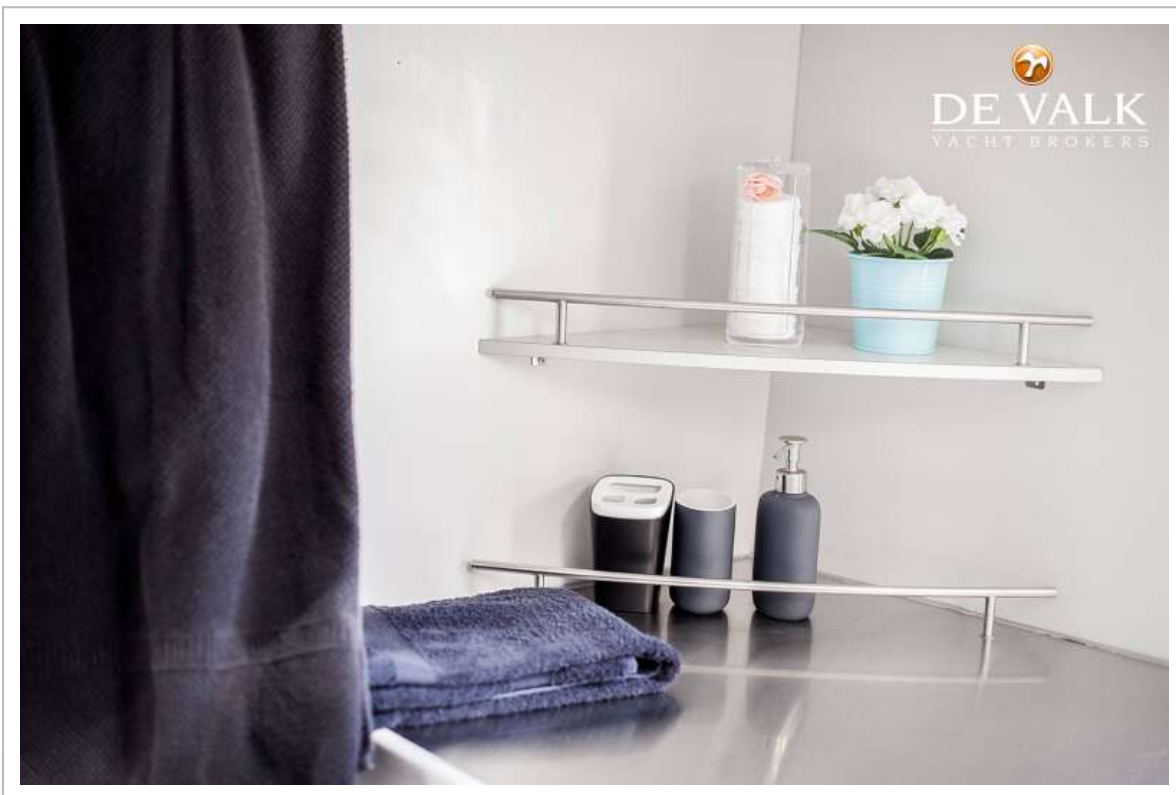
TRULY CLASSIC 90



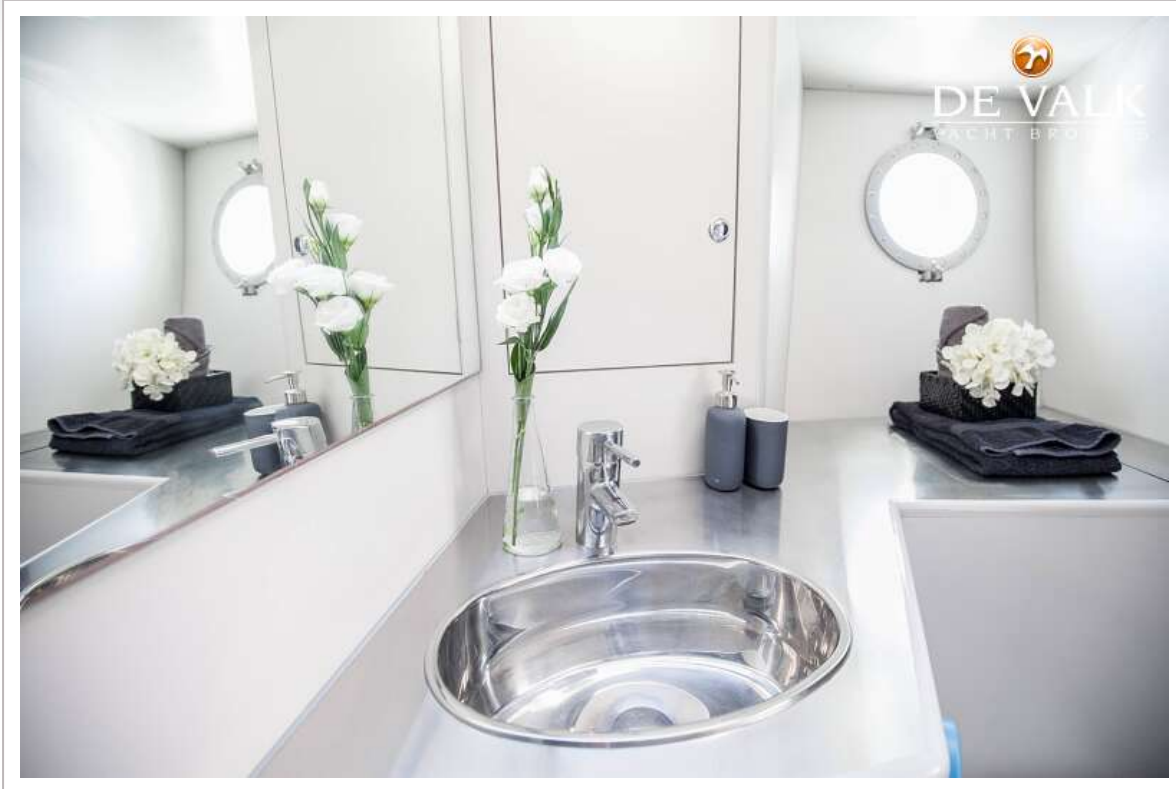
TRULY CLASSIC 90



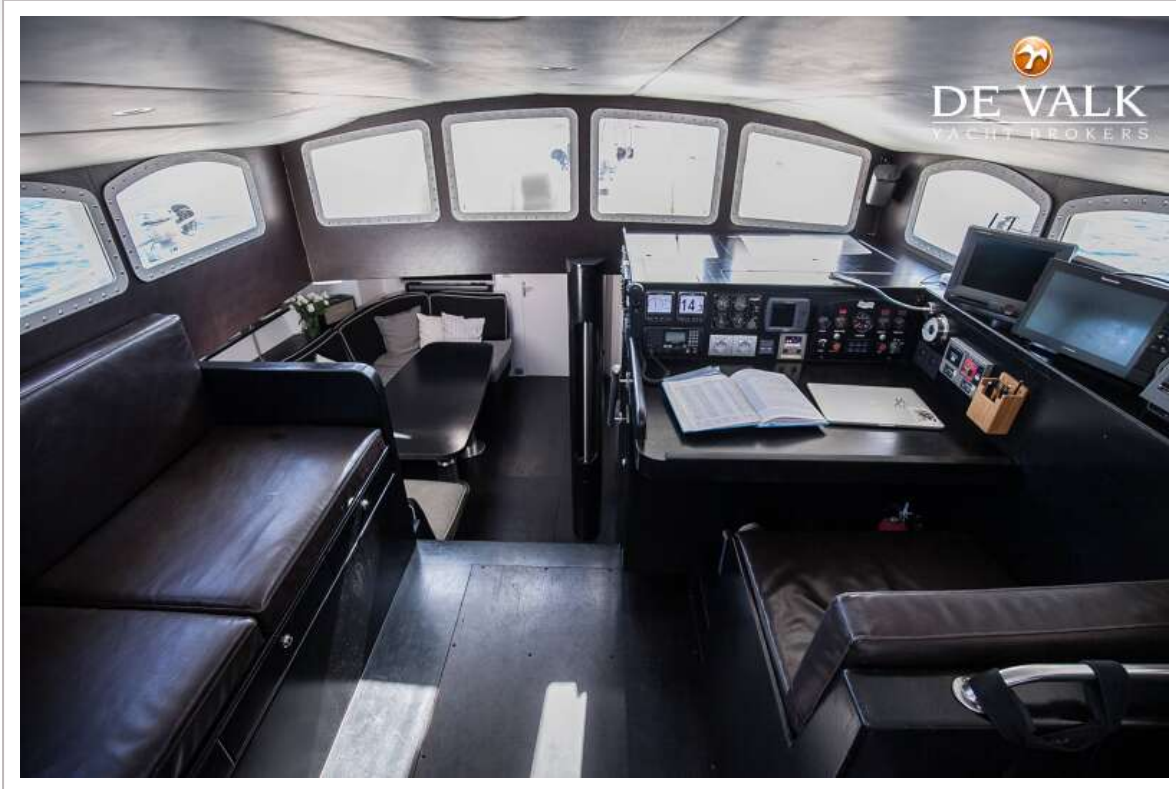
TRULY CLASSIC 90



TRULY CLASSIC 90



TRULY CLASSIC 90



TRULY CLASSIC 90

