



DE VALK  
YACHT BROKERS



CONTEST 35S



DE VALK  
YACHT BROKERS

## VAN DE MAKELAAR

The Contest 35 Sy AJA is a proven offshore cruiser from renowned Dutch builder Conyplex, with timeless lines and a solid reputation. Well equipped for extended cruising, she features a reliable Volvo Penta engine (2016), upgraded rigging, windvane steering, solar and wind power, and a comprehensive Raymarine setup. Lovingly maintained and in the same ownership since 2009, she offers safety, comfort, and self-sufficiency for serious sailors. VAT paid and ready to sail. A capable yacht with a strong pedigree.

*Sofia Iliia-Salvanou*

## SPECIFICATIES

<b>Afmetingen</b>	10.90 x 3.52 x 1.90 (m)	<b>Bouwer</b>	Conyplex b.v.
<b>Bouwjaar</b>	1989	<b>Hutten</b>	2
<b>Materiaal</b>	Polyester	<b>Slaapplaatsen</b>	6
<b>Motor(en)</b>	1 x VOLVO PENTA D2-40 diesel	<b>Pk/Kw</b>	40.00 (pk), 29.44 (kw)
<b>Vraagprijs</b>	€ 58.000 (BTW Betaald)	<b>Ligplaats</b>	bij verkoopkantoor

## CONTACT

<b>Kantoor</b>	De Valk Corfu	<b>Telefoon</b>	(+30) 6948681503
<b>Adres</b>	New Port of Corfu, near Gouvia Marina 490 83 Corfu GR	<b>E-mail</b>	corfu@devalk.nl

## DISCLAIMER

Hoewel er uiterste zorg besteed is aan de correctheid, volledigheid en actualiteit van onze informatie kunnen hieraan geen rechten worden ontleend.



## ALGEMEEN

<b>Model</b>	CONTEST 35S
<b>Type</b>	zeiljacht
<b>Lengte (m)</b>	10,90
<b>Lengte waterlijn (m)</b>	9,30
<b>Breedte (m)</b>	3,52
<b>Diepgang (m)</b>	1,90
<b>Stahoogte (m)</b>	1,90
<b>Bouwjaar</b>	1989
<b>Te waterlating</b>	1989
<b>Gebouwd door</b>	Conyplex b.v.
<b>Land</b>	Nederland
<b>Ontwerper</b>	Dick Zaal
<b>Waterverplaatsing (t)</b>	8,42
<b>Bruto tonnage</b>	8
<b>Netto tonnage</b>	2
<b>Romp materiaal</b>	polyester
<b>Romp kleur</b>	wit
<b>Brandstoftank (liter)</b>	120 liters, monitored + 3x 20-liter jerrycans
<b>Drinkwatertank (liter)</b>	roestvast staal (2x120 liters), with float and monitor
<b>Vuilwatertank (liter)</b>	30
<b>Stuurwiel</b>	With cover
<b>Noodhelmstok</b>	Stainless steel

## ACCOMMODATIE

<b>Hutten</b>	2
<b>Slaapplaatsen</b>	6
<b>Salon</b>	Upholstery of salon benches (dark blue) replaced Dec. 2014
<b>Verwarming</b>	Webasto heater Airtop Evo 3900
<b>Kaartentafel</b>	ja
<b>Achterkajuit</b>	ja



Eetkamer	ja
Dinette	ja
Dinette om te bouwen	ja
Keuken	ja
Aanrechtblad	ja
Spoelbak	ja
Kooktoestel	ja
Oven	ENO 2-burner gas stove Grand Large (2020)
Koelkast	ja
Warmwatersysteem	Quick boiler (20 liters) 1200W + switch
Waterkoker	ja
Eigenaarshut	tweepersoonsbed
Kledingkast	ja
Badkamer	apart
Toilet	apart
Toilet Systeem	handbediening Jabsco
Wasbak	in de badkamer
Douche	ja
Gastenhut 1	tweepersoonsbed With extra wash basin
Kledingkast	ja

## MOTOR(EN)

Aantal motoren	1
Merk	VOLVO PENTA
Type	D2-40
Pk	40
kW	29.44
Brandstof	diesel
Geïnstalleerd in jaar	2016
Aandrijving	schroefas
Schroefbladen	3



<b>Materiaal schroefas</b>	roestvast staal Replaced March 2024
<b>Handlenspomp</b>	ja
<b>Elektrische lenspomp</b>	ja
<b>Accu's</b>	ja
<b>Startaccu</b>	75Ah 2022
<b>Lichtaccu</b>	3x120Ah New Sept. 2025 (not Lithium but standard)
<b>Accu monitor</b>	Victron BMV-600s 2013
<b>Acculader/omvormer</b>	Victron EasyPlus 12/1600/70 replaced 2019
<b>Windgenerator</b>	Superwind 350 + Shutoff switch
<b>Zonnecellen</b>	Victron: 1x130W + 2x110W
<b>Diodebrug</b>	Victron Cyrix 2013
<b>Scheidingstrafo</b>	Victron 2000
<b>Watermaker</b>	Katadyn, Power Survivor 40E (Bought but not connected)

## NAVIGATIE

<b>Dieptemeter</b>	Raymarine
<b>Windmeetset</b>	Raymarine
<b>Marifoon</b>	Icom IC-M 323G (incl.GPS)
<b>Handmarifoon</b>	Icom M91D
<b>Autopiloot</b>	Raymarine SPX5 (2010) needs inspection
<b>Windvaan besturing</b>	(2016), barely used
<b>Plotter</b>	Raymarine chartplotter c95 (2016)
<b>AIS transponder</b>	Raymarine
<b>Radio ontvanger</b>	Icom IC-7200 SSB + ground plate
<b>Navigatieverlichting</b>	ja
<b>Extra info</b>	Below-deck autopilot Jefa drive unit Type 1, Raymarine EV200

## UITRUSTING

<b>Buiskap</b>	2017
<b>Bimini</b>	2017 + removable side panels
<b>Zwemtrap</b>	ja



Loopplank	(needs to be installed)
Dekdouche	Plastimo
Anker	Rocna 20kg
Ankerketting	Galvanized - 8mm - 60m
Anker 2	CQR ploegschaar 18kg
Ankerlier	elektrisch Lewmar + Remote control (Lofrans)
Bijboot	opblaasbaar Zodiac 2,70m
Buitenboordmotor	Yamaha 4HP (needs inspection)
Zeereeling	+ new stern railing with bracket
Reddingsvlot	ja
Reddingsvlot (pers)	4
Reddingsvlot laatst gekeurd	2017
Veiligheidslijnen op dek	ja
Radar reflektor	ja
Stootkussens	ja
Radio	Built-in Kenwood
Kuipspeakers	2 (2016)
Speakers in salon	2 (2016)
Extra info	All lighting is LED

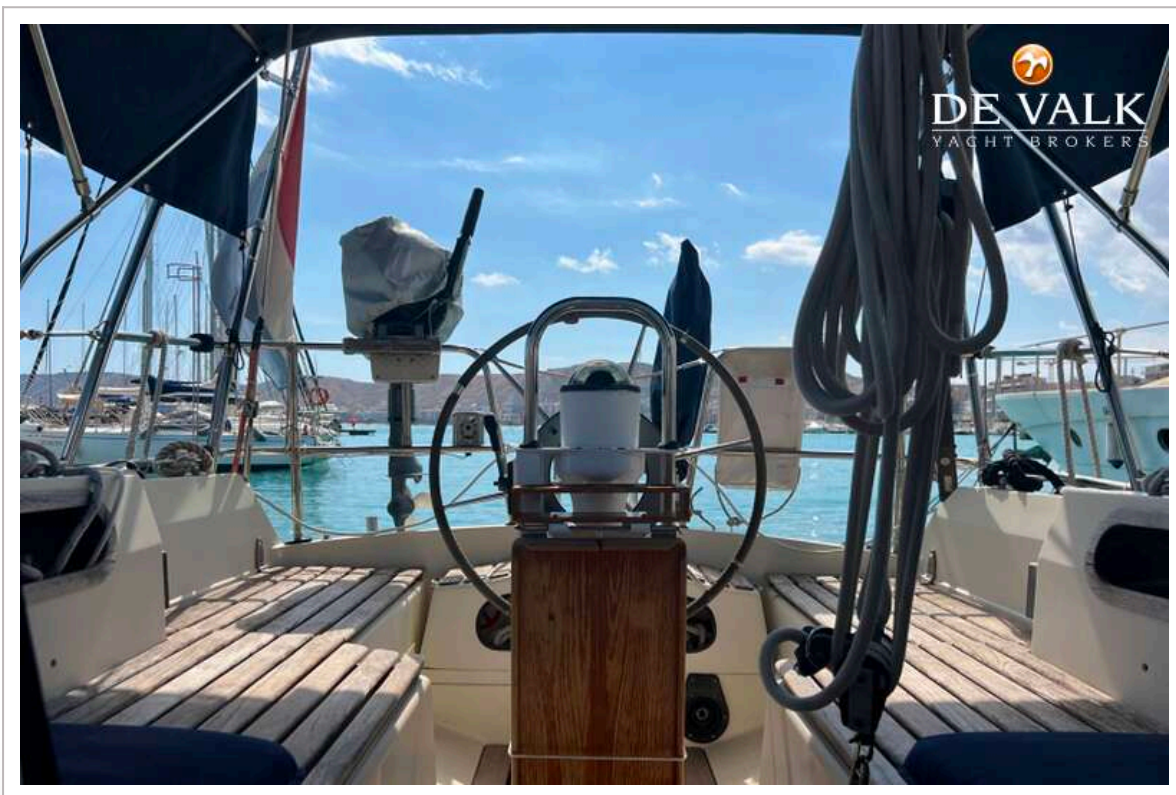
## TUIGAGE

Staad want	Replaced in 2016/2017
Merk mast	Seldén + tri-color top light
Materiaal mast	aluminium
Grootzeil	23,9 sq m
Genua	33 sq m
Genua rolreefsysteem	Furlex
Gennaker	Momentum
Genua schootlieren	Self-tailing Lewmar EVO
Extra info	Removable inner forestay - Navtec backstay tensioner
Extra info	Foldable mast steps





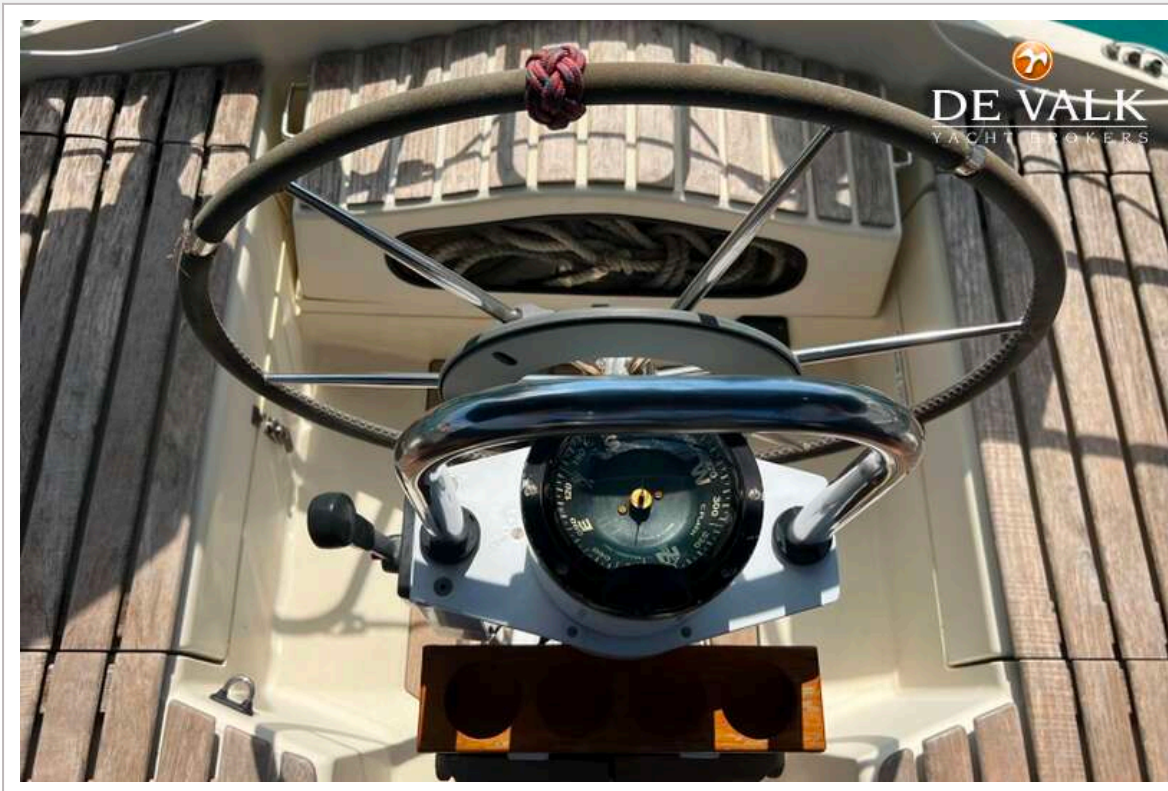


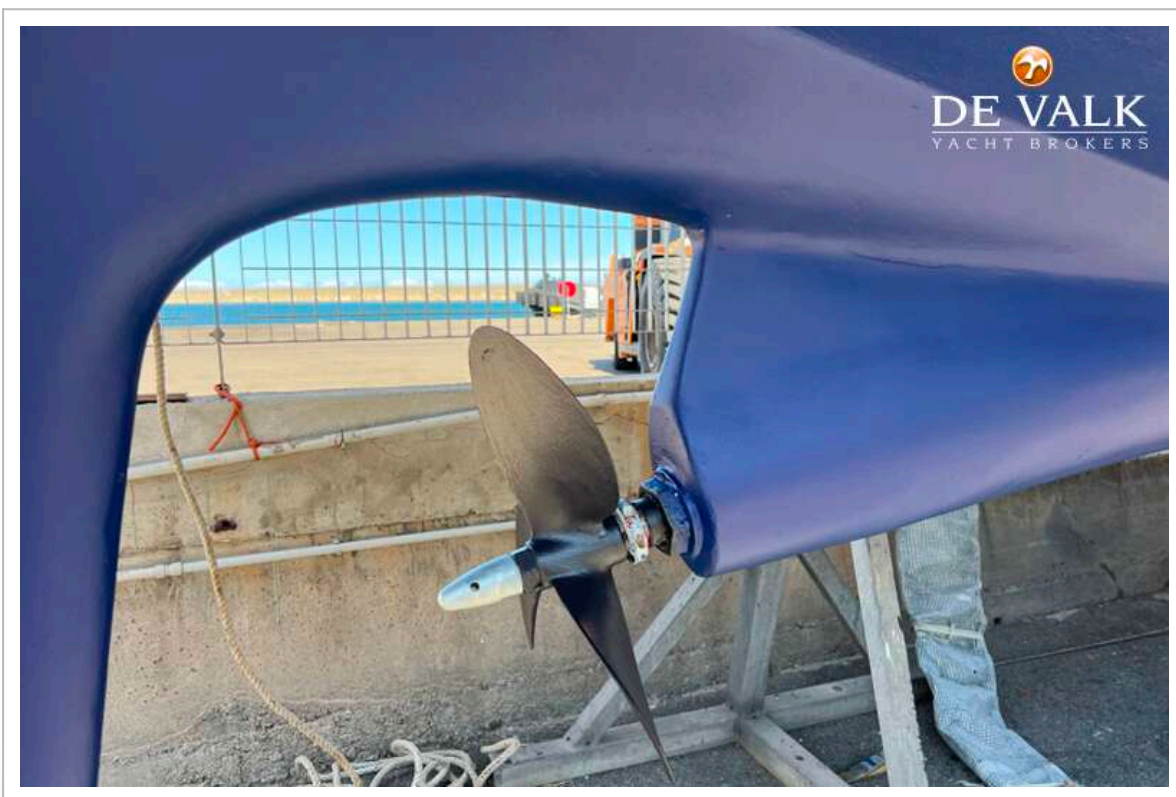


# CONTEST 35S

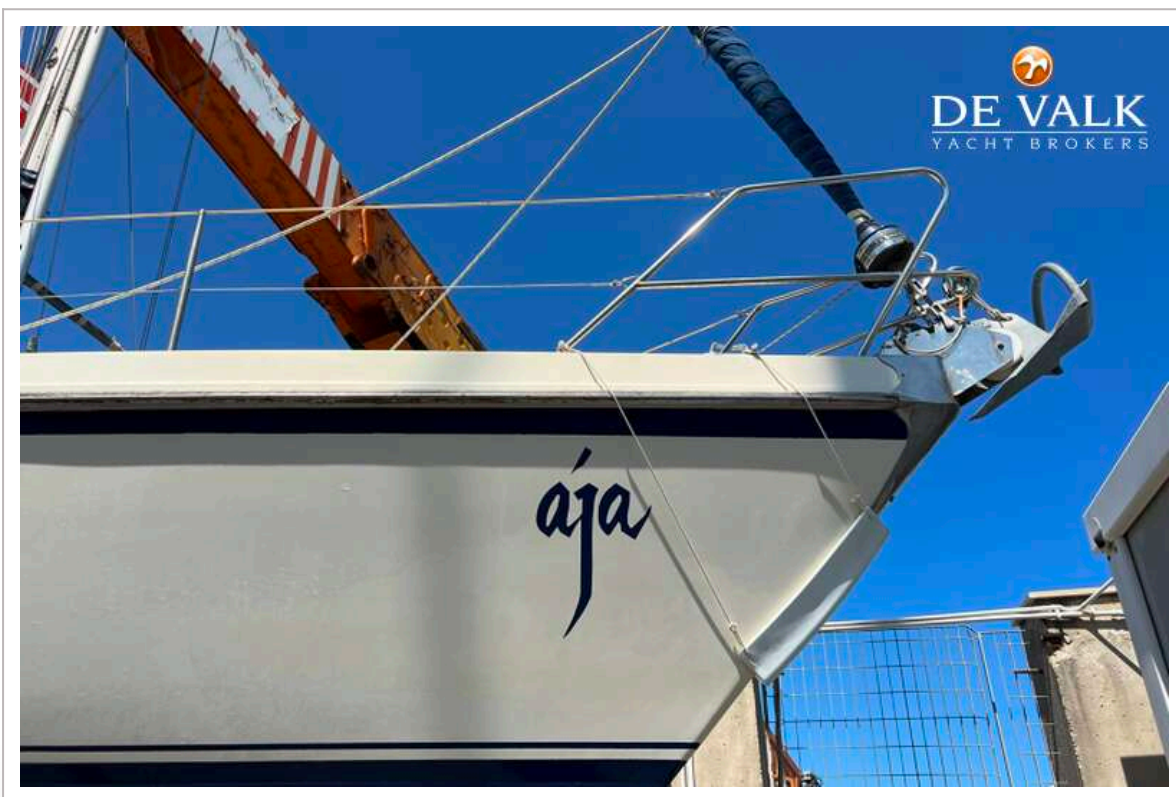
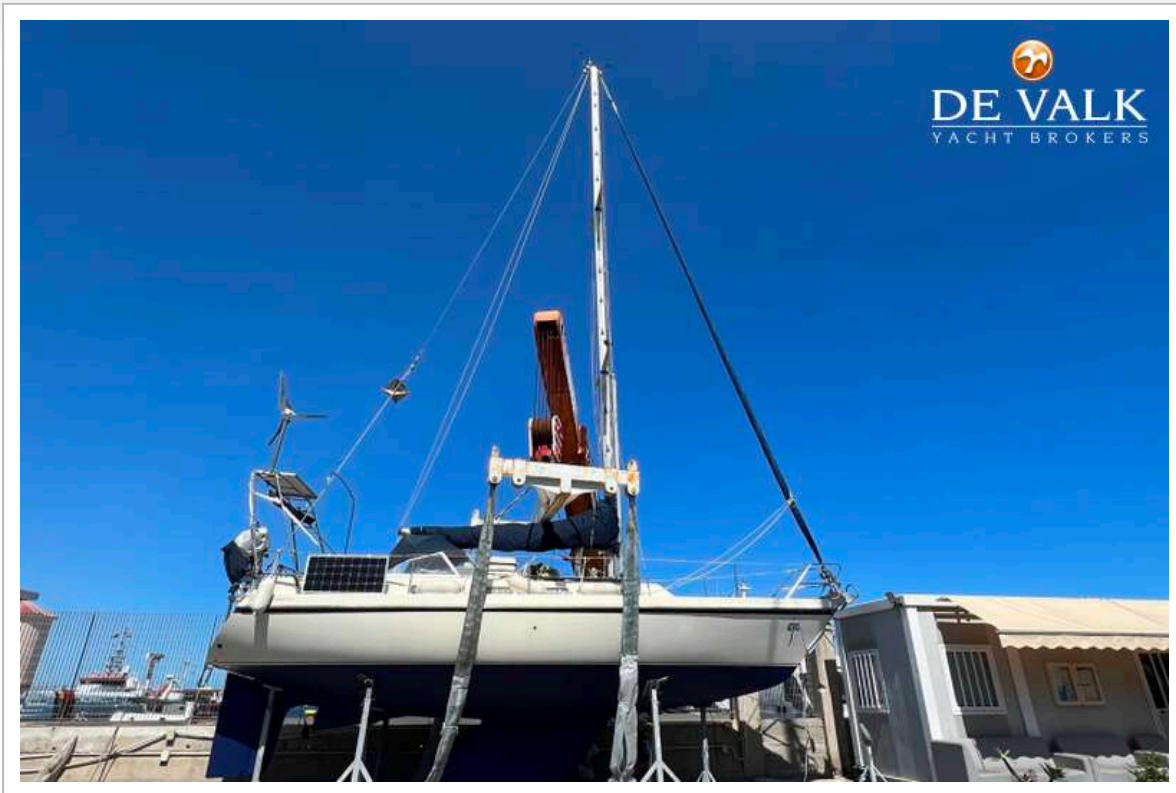


# CONTEST 35S

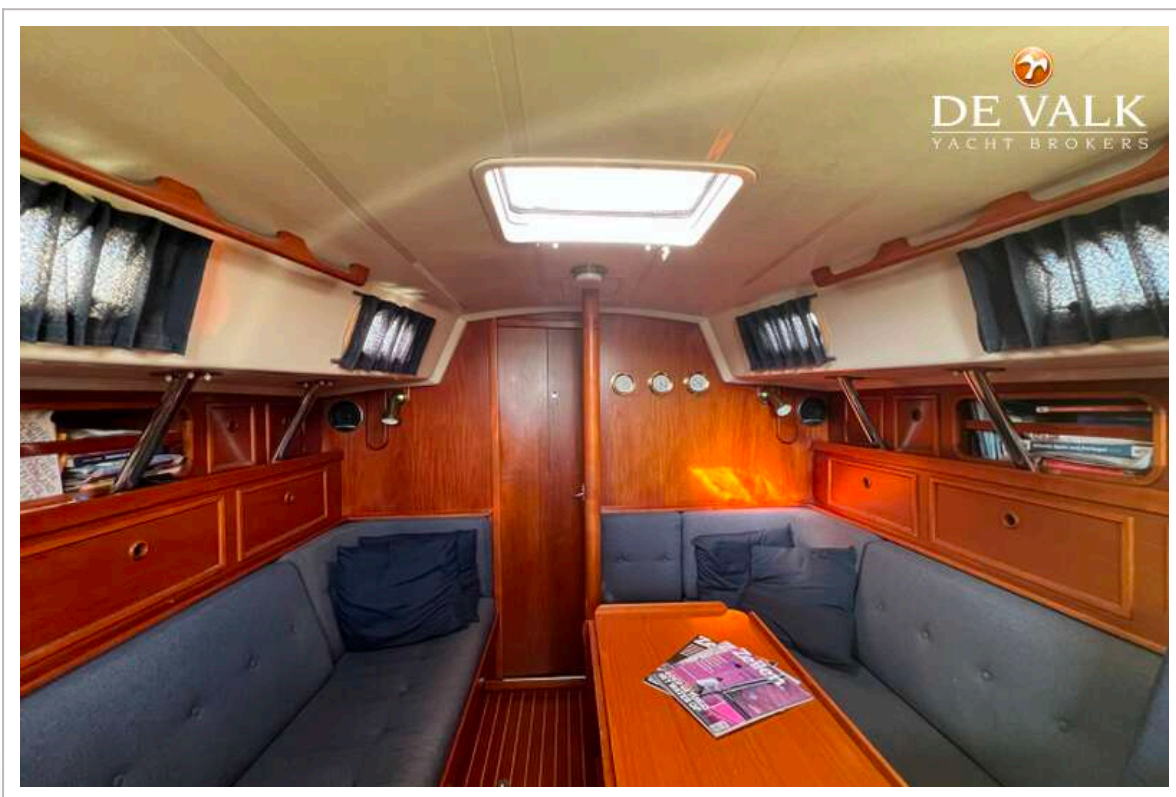




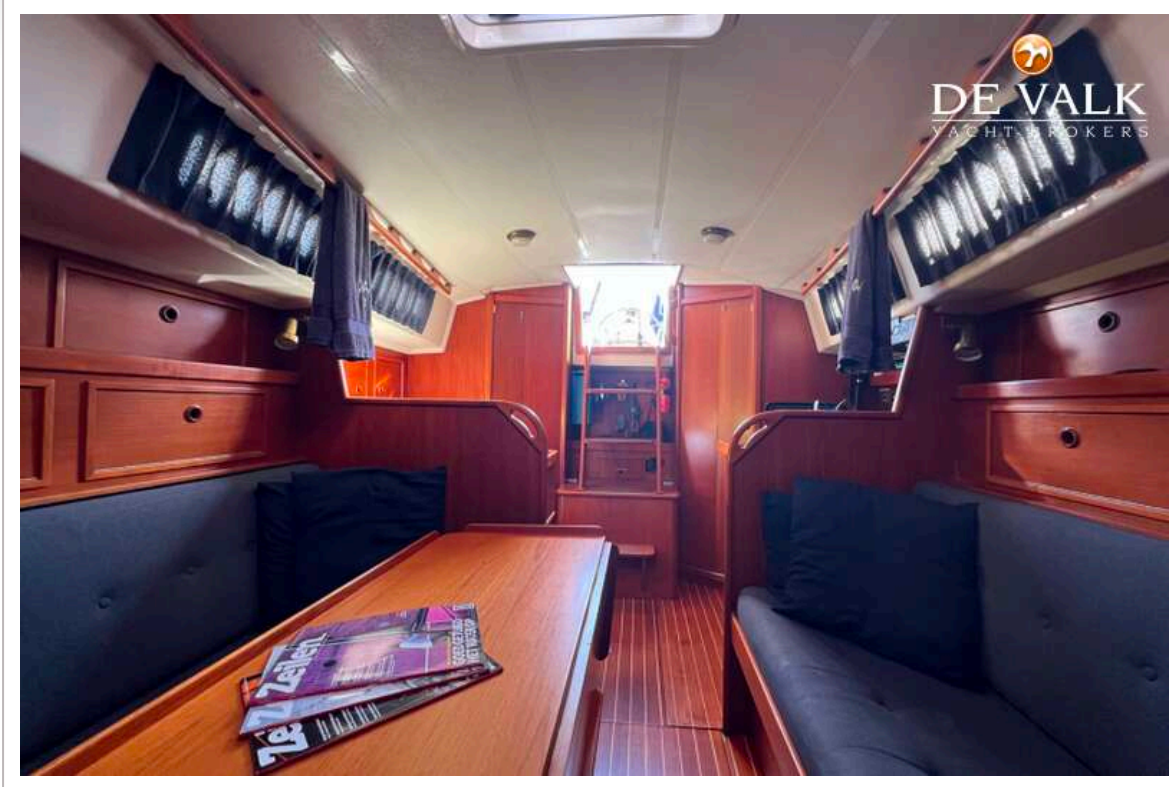




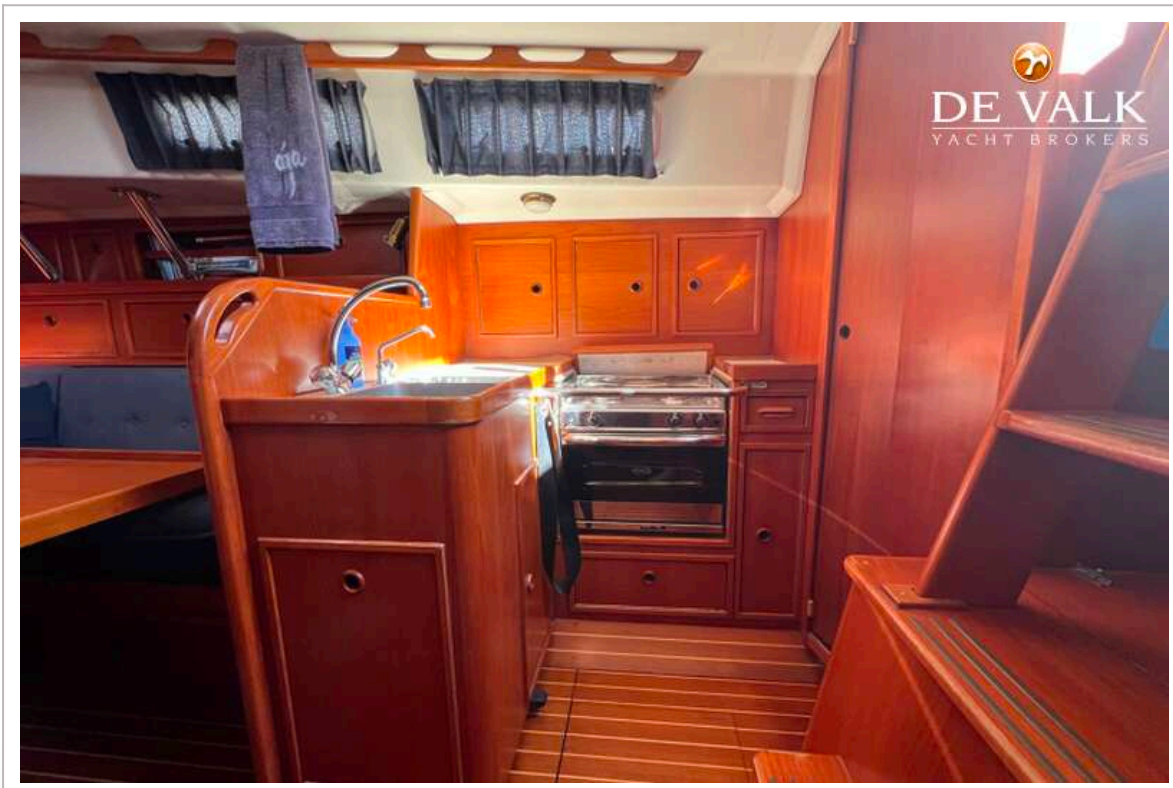
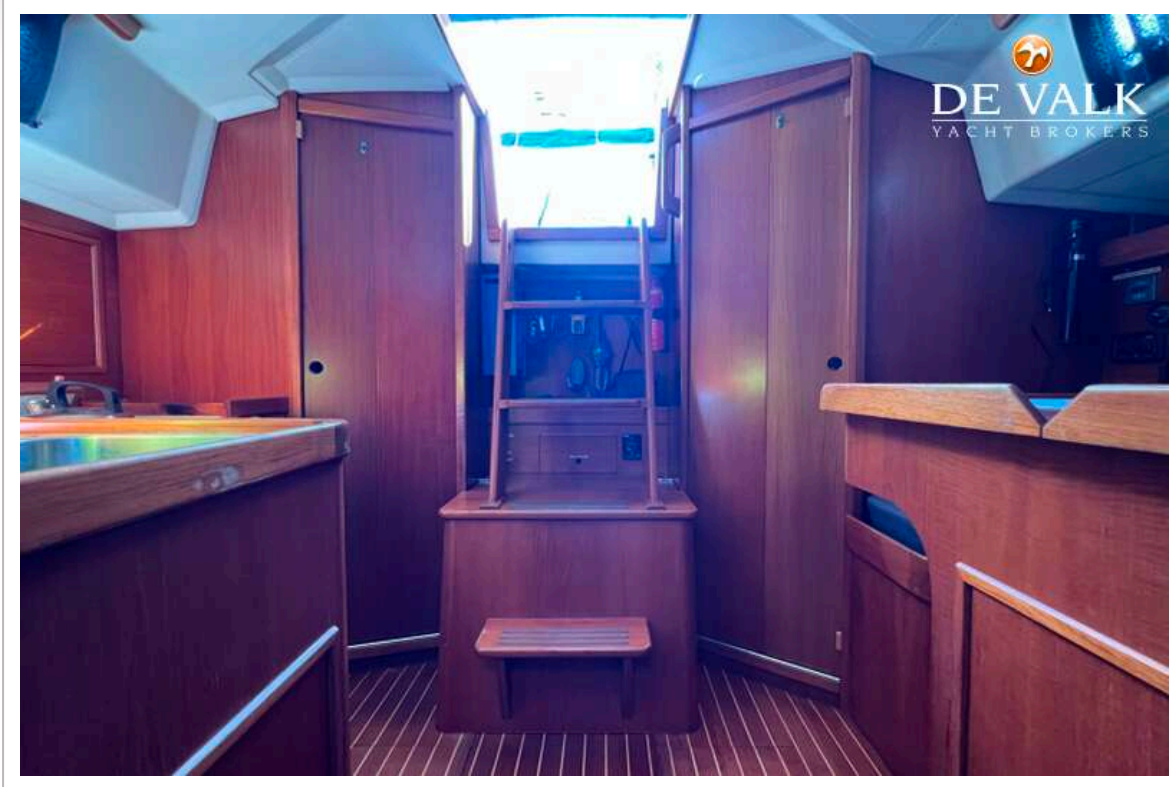
# CONTEST 35S



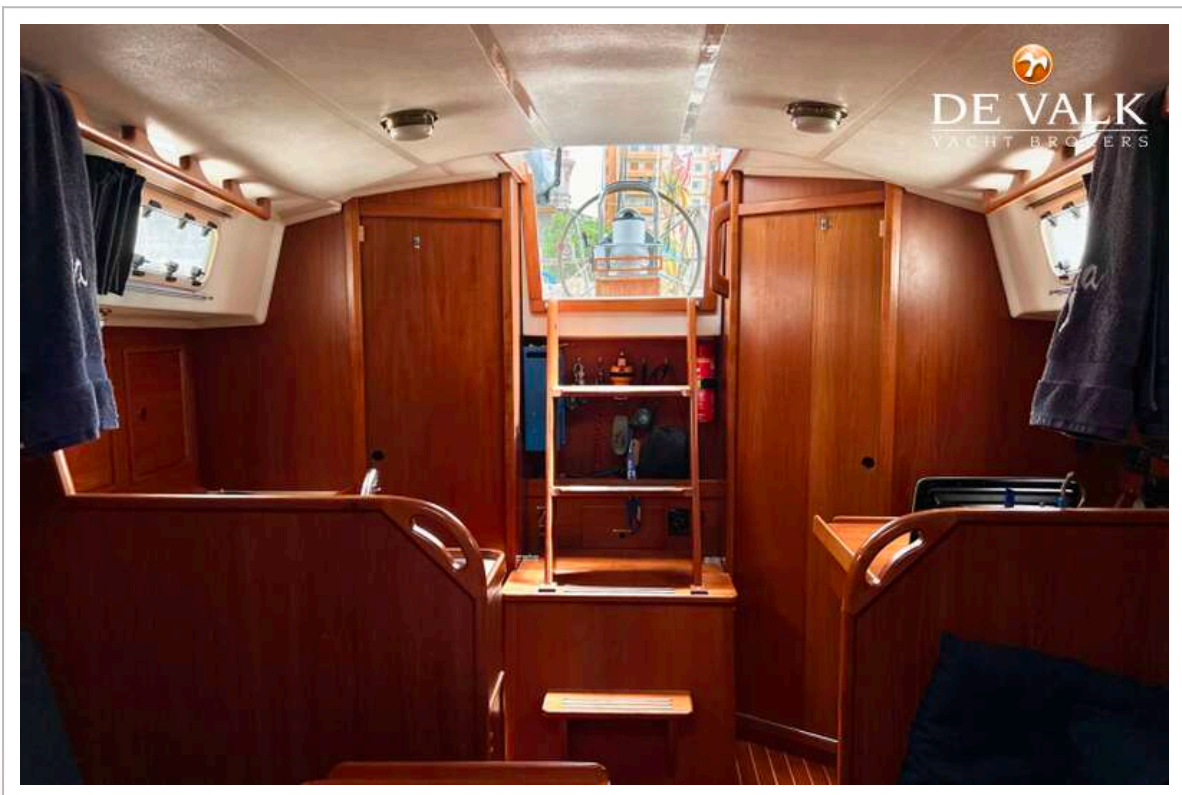
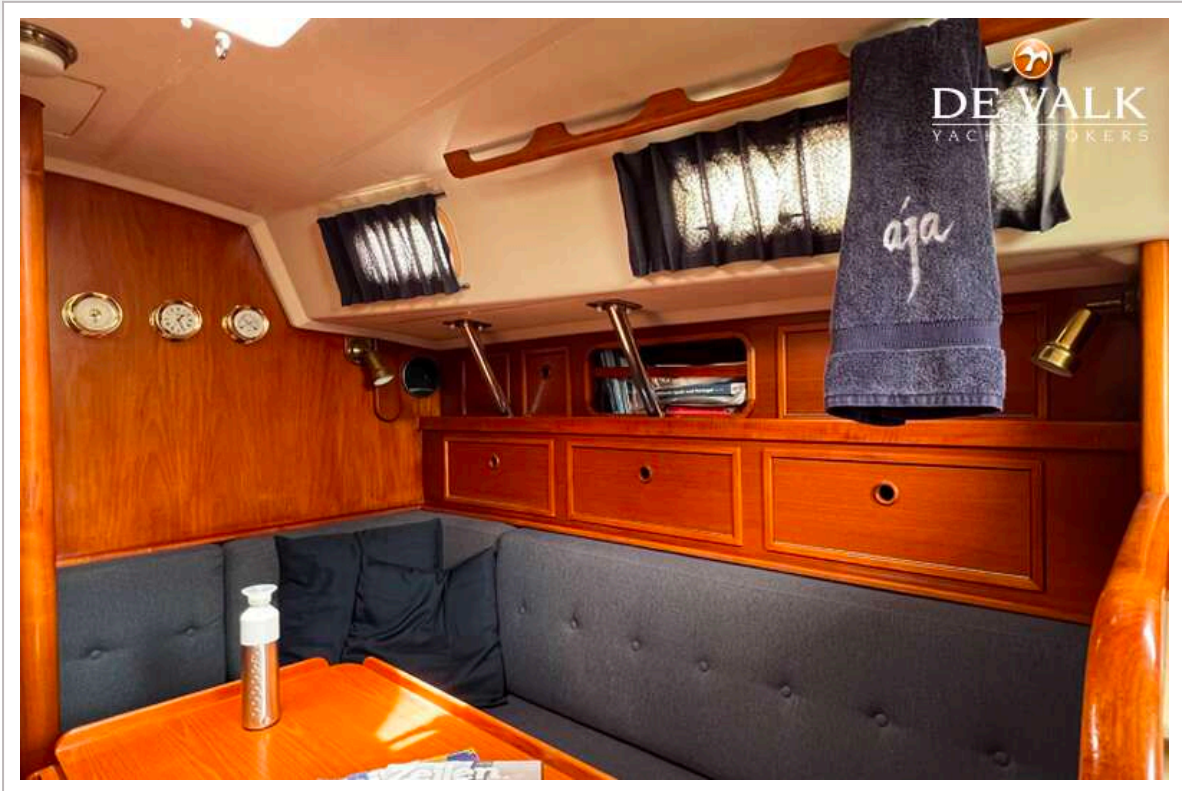
# CONTEST 35S



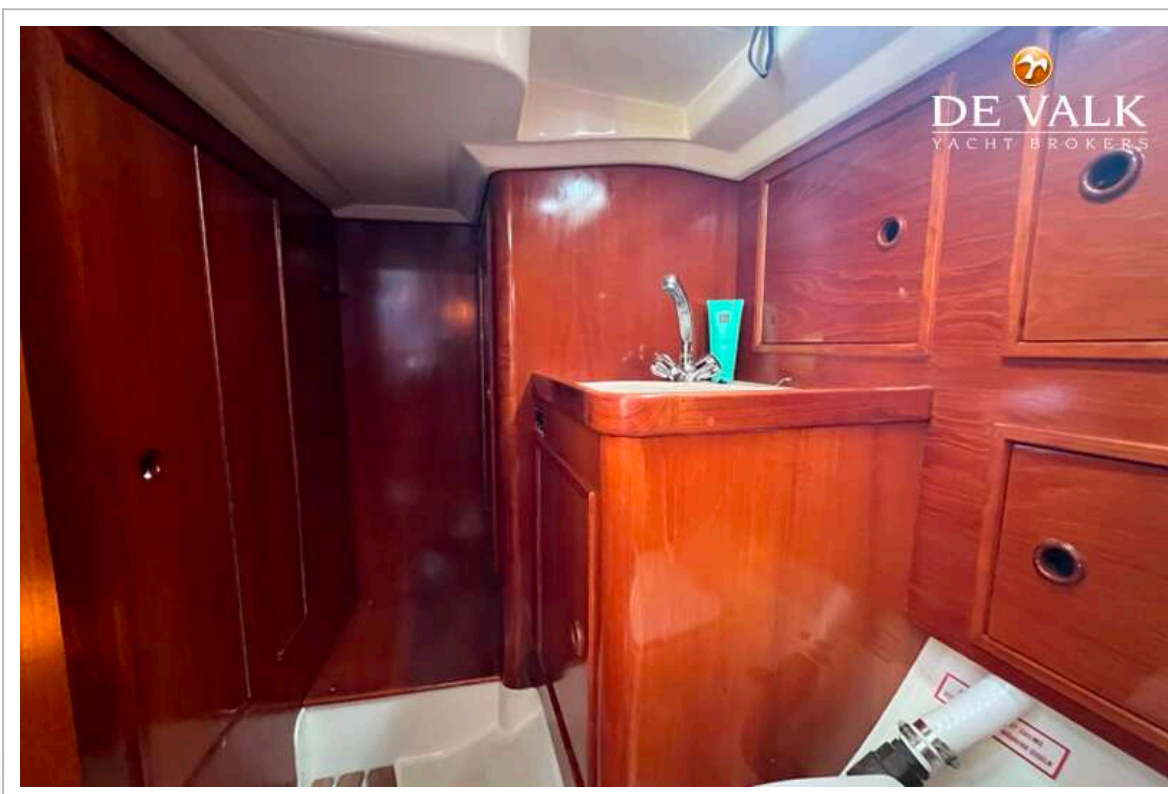
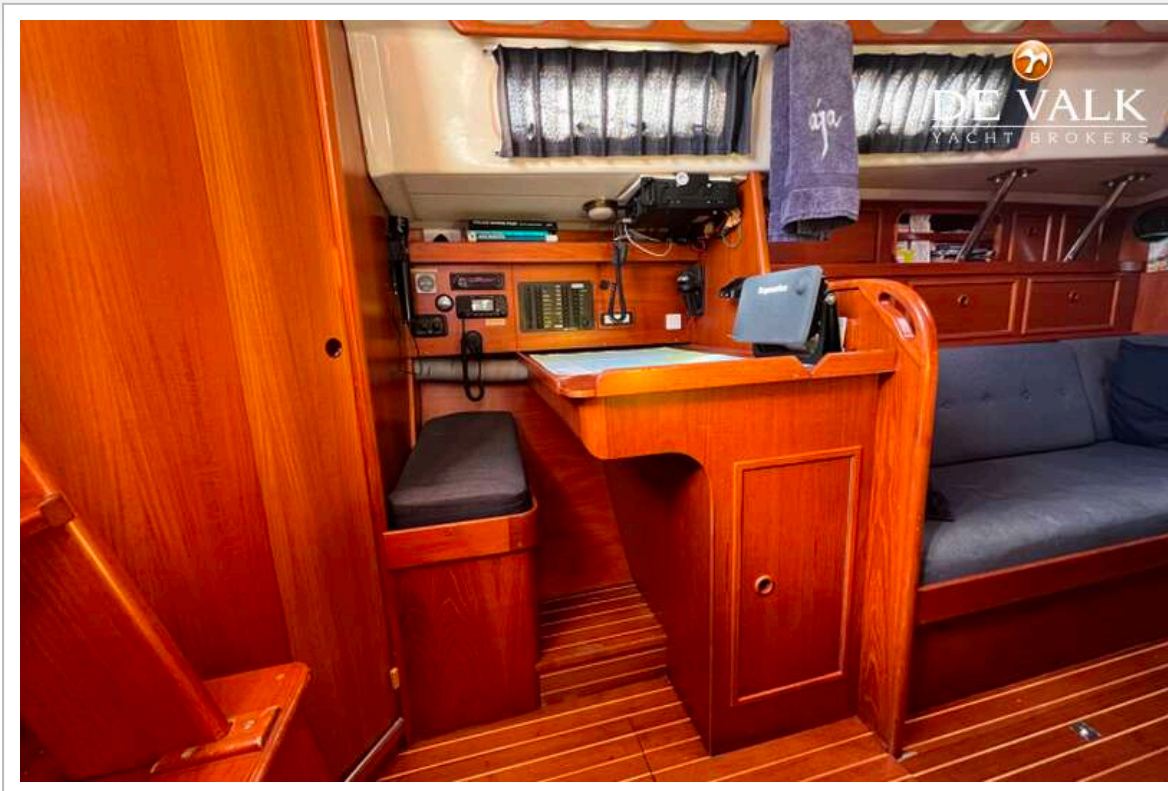
# CONTEST 35S



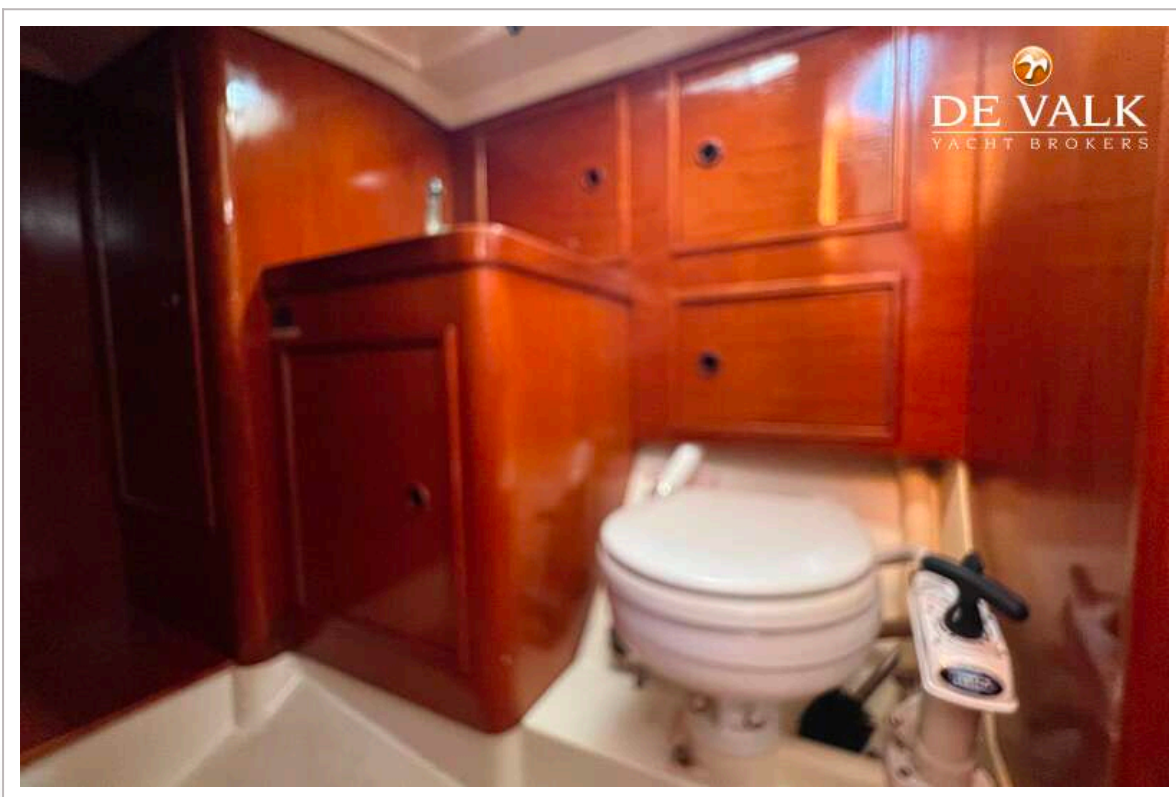
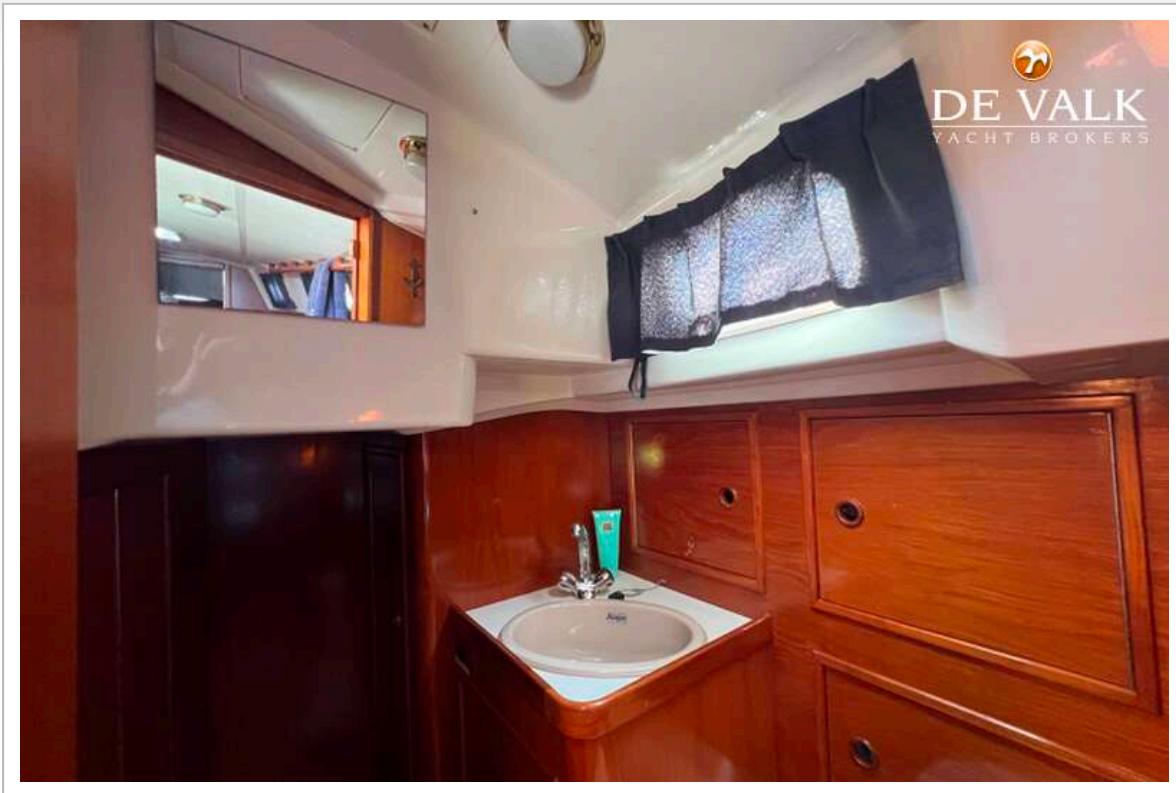
# CONTEST 35S



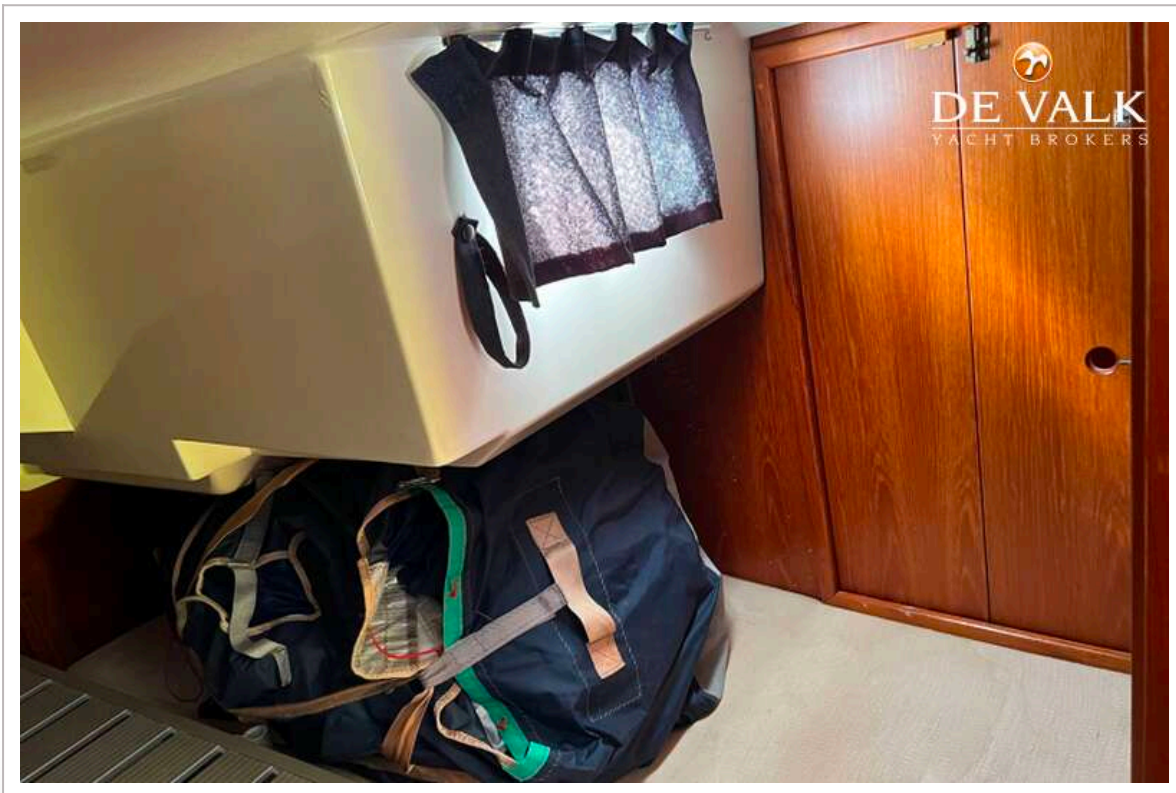
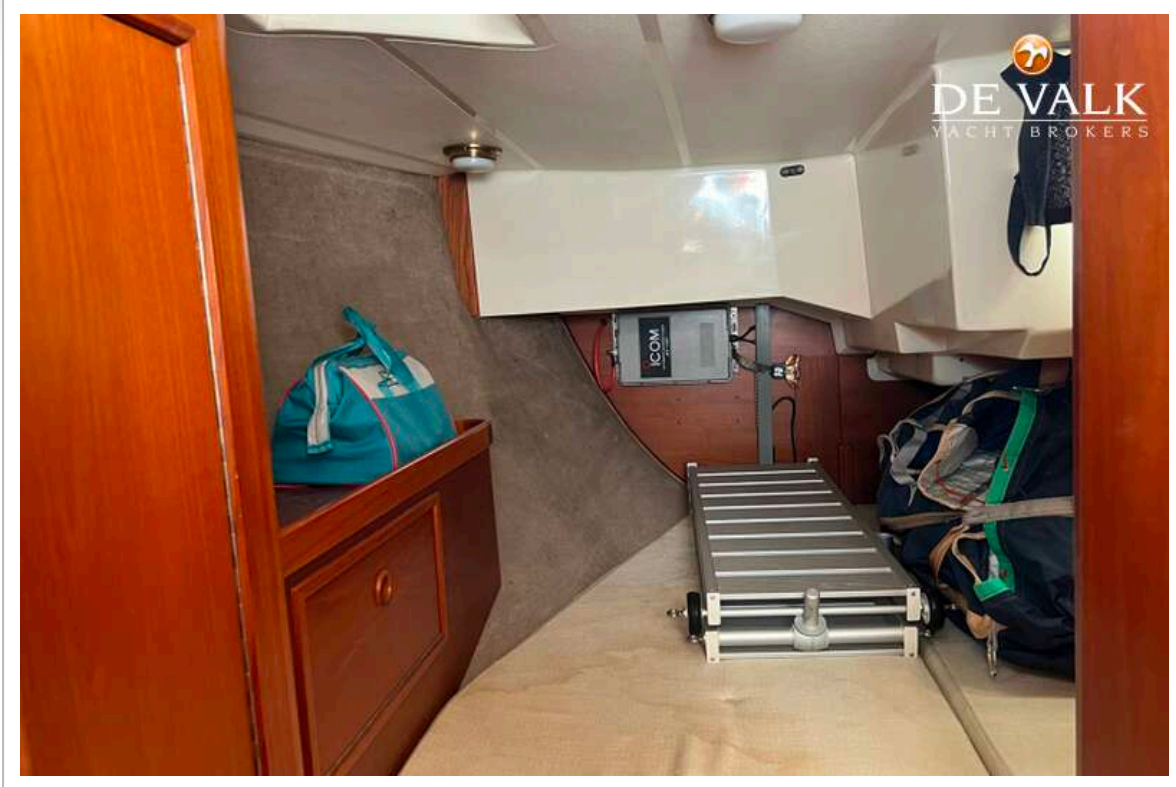
# CONTEST 35S



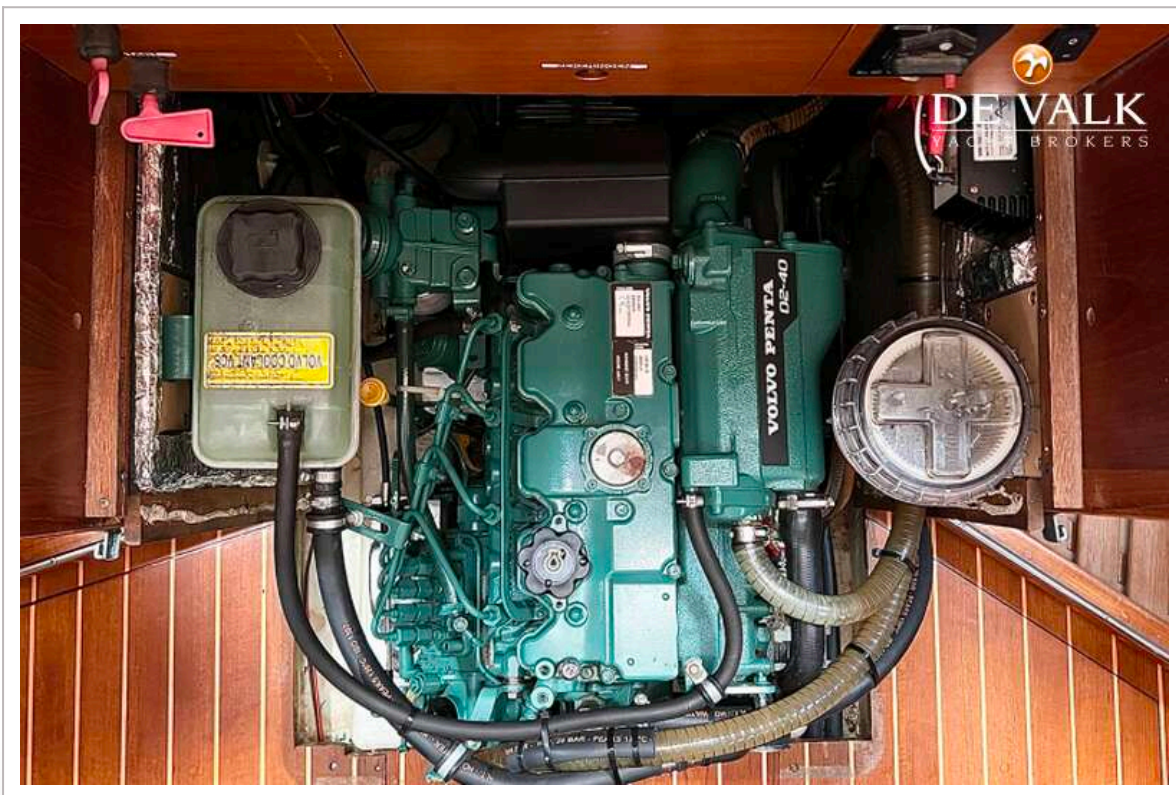
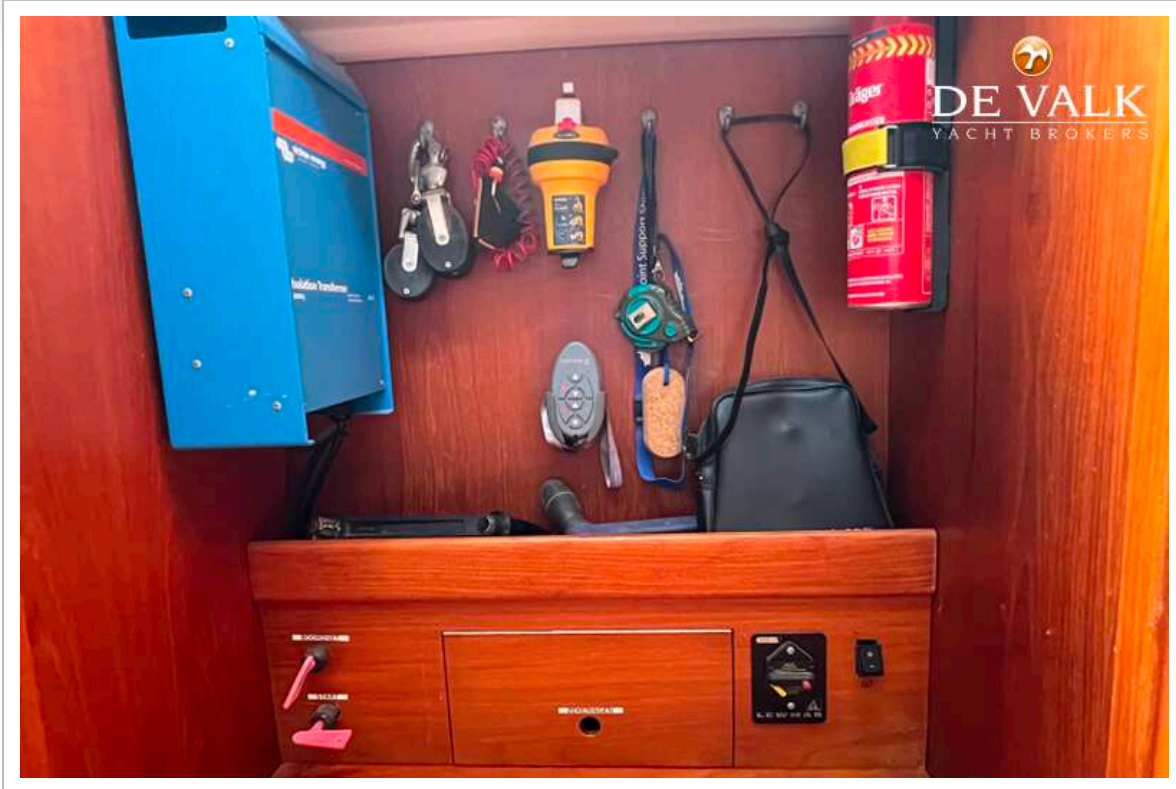
# CONTEST 35S



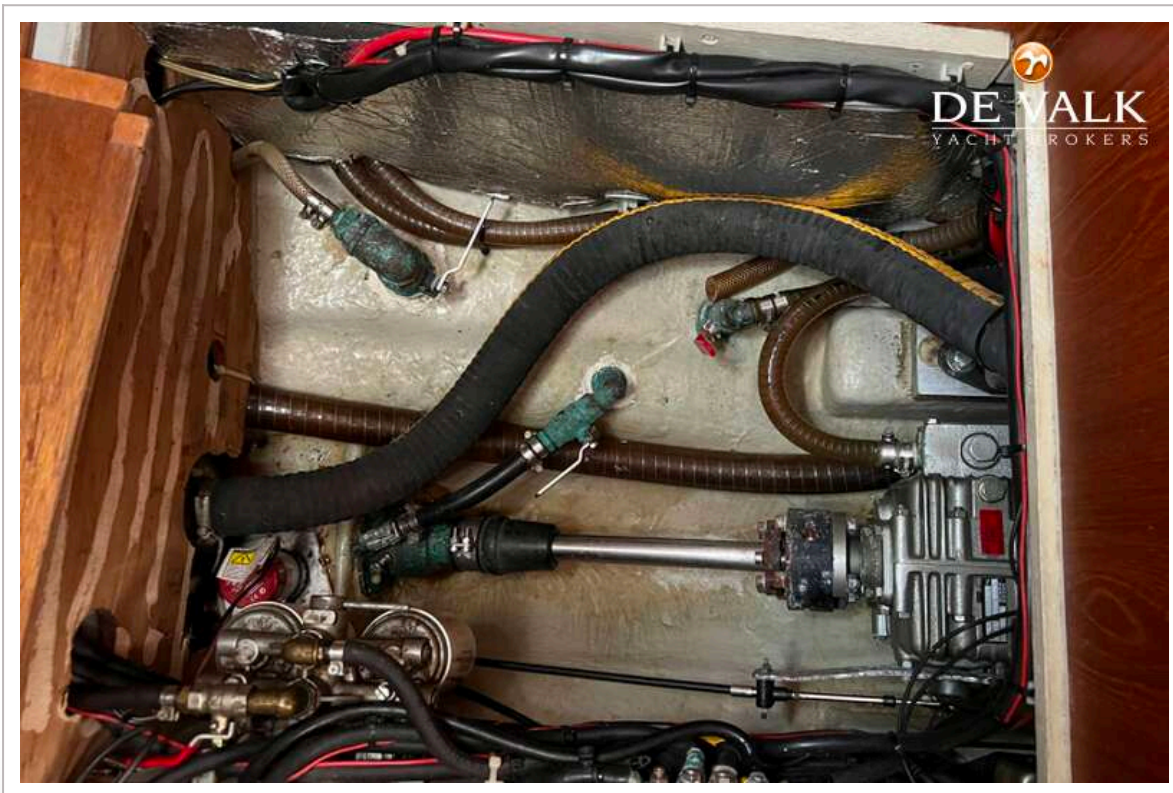
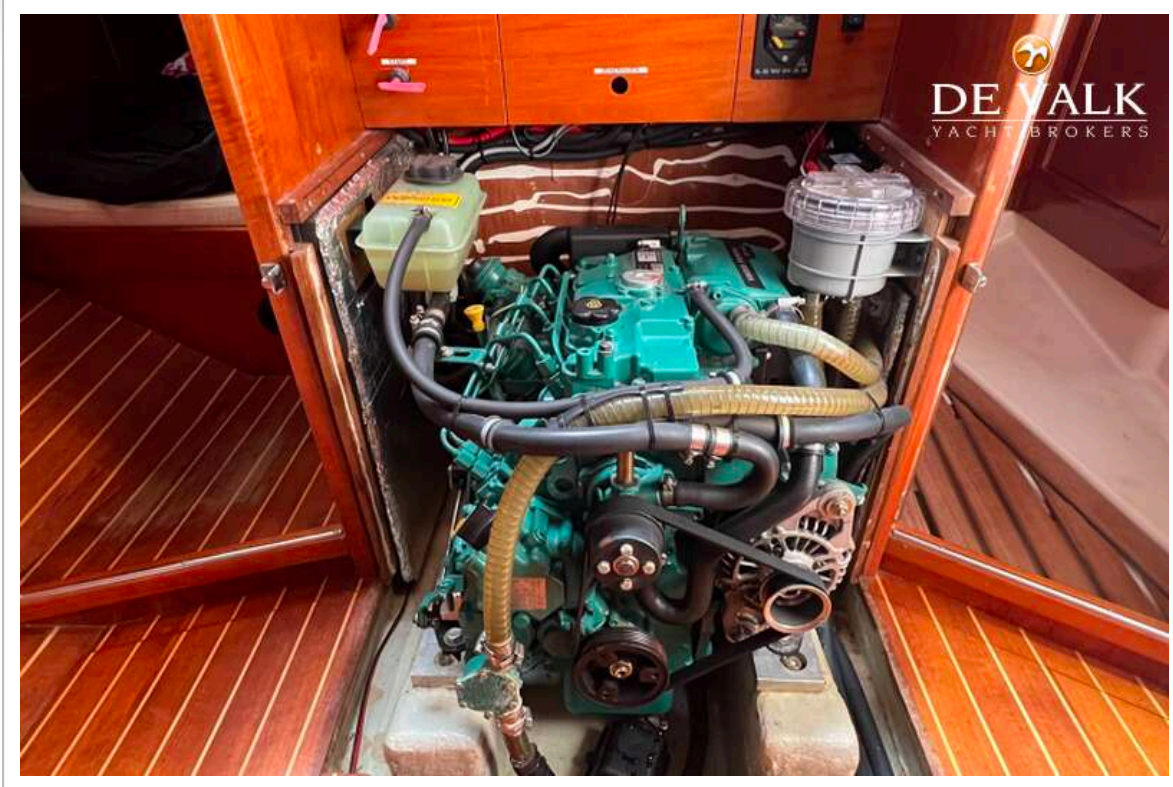
# CONTEST 35S



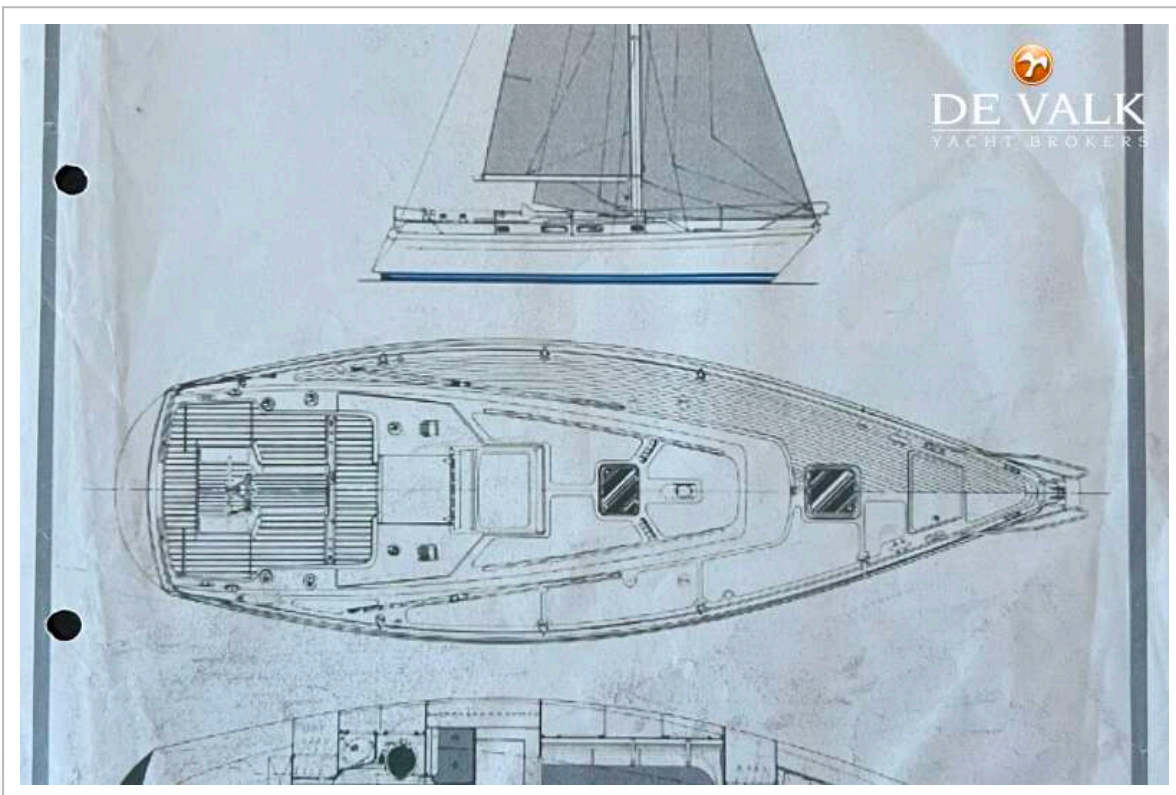
# CONTEST 35S

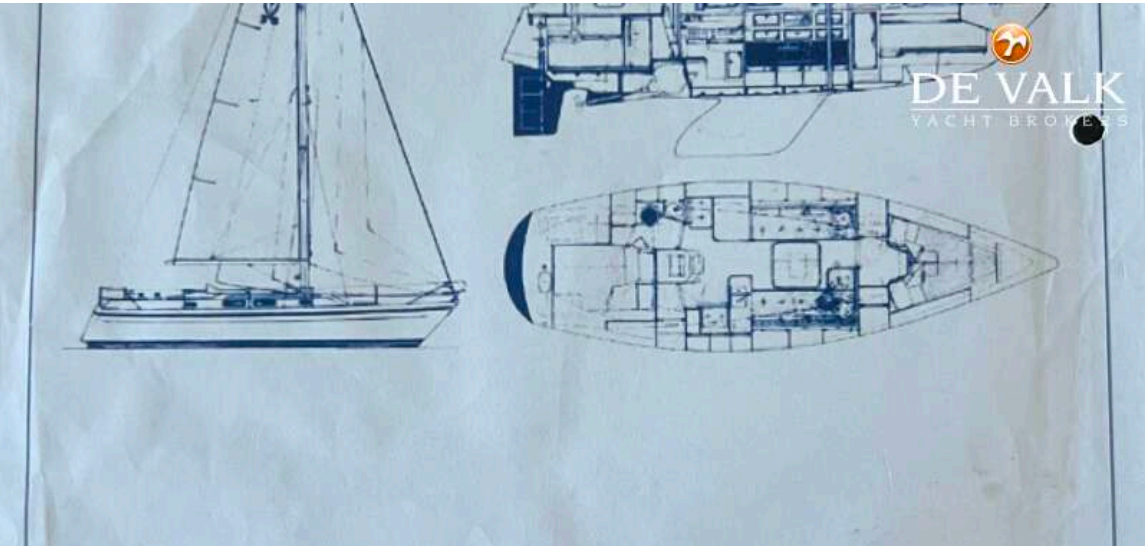


# CONTEST 35S



# CONTEST 35S

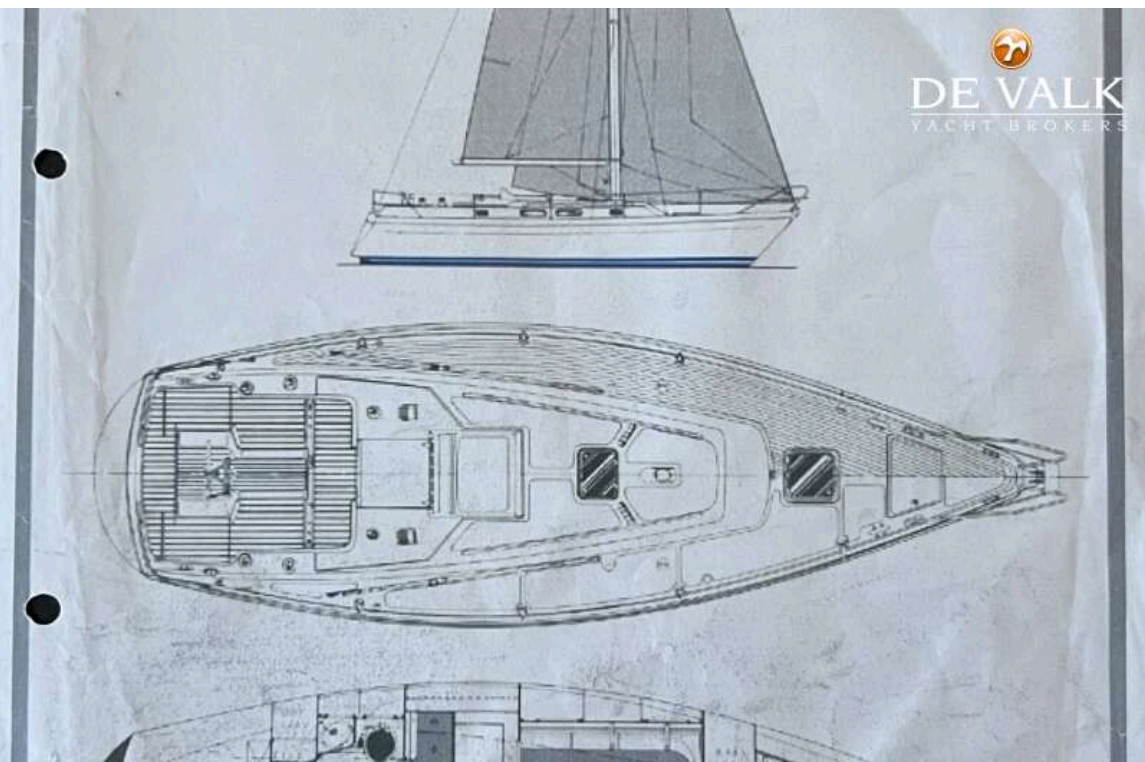




**DE VALK**  
YACHT BROKERS

## SPECIFICATIONS AND ORDER FORM

Length hull	10.90 m	35' 8"	Mastheight above waterline	15.70 m	53' 11"
Length waterline	9.30 m	30' 5"	Mainsail	23.9 m <sup>2</sup>	257 sq.ft.
Maximum beam	3.52 m	11' 5"	Genoa	33.0 m <sup>2</sup>	355 sq.ft.
Draft standard keel	1.90 m	6' 2"			



**DE VALK**  
YACHT BROKERS

