



DE VALK
YACHT BROKERS



SIGMA 38



DE VALK
YACHT BROKERS

VAN DE MAKELAAR

Sigma 38 (1989) is a classic performance cruiser–racer designed by David Thomas and built by Marine Projects in the UK. It features a fin keel, spade rudder, and a powerful fractional sloop rig, making it fast and responsive under sail. With a solid GRP (fiberglass) hull, spacious cockpit, and practical interior layout for up to eight berths, the Sigma 38 was created as a one-design offshore racing yacht following the success of the 1985–86 Whitbread Round the World Race. Its reputation for seaworthiness, durability, and performance has made it a sought-after classic among offshore sailors.

Sofia Iliia-Salvanou

SPECIFICATIES

Afmetingen	11.58 x 3.75 x 2.03 (m)	Bouwer	Marine Projects
Bouwjaar	1989	Hutten	3
Materiaal	Polyester	Slaapplaatsen	6
Motor(en)	1 x VOLVO PENTA D1 30 diesel	Pk/Kw	30.00 (pk), 22.08 (kw)
Vraagprijs	verkocht (BTW)	Ligplaats	elders / niet bij verkoopkantoor

CONTACT

Kantoor	De Valk Corfu	Telefoon	(+30) 266 111 8095
Adres	New Port of Corfu, near Gouvia Marina 490 83 Corfu GR	E-mail	corfu@devalk.nl

DISCLAIMER

Hoewel er uiterste zorg besteed is aan de correctheid, volledigheid en actualiteit van onze informatie kunnen hieraan geen rechten worden ontleend.



ALGEMEEN

Model	SIGMA 38
Type	zeiljacht
Lengte (m)	11,58
Breedte (m)	3,75
Diepgang (m)	2,03
Bouwjaar	1989
Gebouwd door	Marine Projects
Land	Verenigd Koninkrijk
Ontwerper	David Thomas
Waterverplaatsing (t)	6,6
Ballast (ton)	2,6
CE norm	A
Romp materiaal	polyester
Romp kleur	wit
Materiaal opbouw	polyester
Stootlijst	rubber
Dek materiaal	polyester
Afwerking dek	anti-slip profiel
Afwerking opbouw	anti-slip profiel
Afwerking kuip	teak
Antifouling (jaar)	Copper coat 2022 (5 layers of primer after being scraped)
Dekluik	ja
Patrijspoorten	ja
Brandstoftank (liter)	90 Lt
Brandstoftank 2 (liter)	Spare tanks: 2x 10 Lt and 3x 5Lt
Drinkwatertank (liter)	2x 60 Lt (extra Jabsco water filter) New pump 2025. Renewal pipe
Stuurwiel	ja
Buiten stuurstand	ja
Noodhelmstok	ja



ACCOMMODATIE

Hutten	3
Slaapplaatsen	6
Salon	ja
Verwarming	ja
Dinette	ja
Keuken	ja
Aanrechtblad	ja
Spoelbak	ja
Kooktoestel	diesel
Oven	ja
Koelkast	ja
Warmwatersysteem	New boiler 20 Lt
Kommaliewant	For 6 persons
Eigenaarshut	tweepersoonsbed
Toilet	apart
Gastenhut 1	tweepersoonsbed
Toilet	apart

MOTOR(EN)

Aantal motoren	1
Merk	VOLVO PENTA
Type	D1 30
Pk	30
kW	22.08
Brandstof	diesel
Boegschroef	New 2023
Type schroef	klap
Elektrische installatie	Complete rewiring of all electrical systems
Startaccu	New 2024
Lichtaccu	New Lithium 2023



Acculader	ja
Walstroom	met kabel

NAVIGATIE

Kompas	ja
Dieptemeter	ja
Windmeetset	ja
Marifoon	ja
Autopiloot	ja
Plotter/GPS	RAYMARINE
Elektronische kaart(en)	ja
Navigatieverlichting	ja

UITRUSTING

Buiskap	New
Bimini	New
Ankerlier	elektrisch
Reddingsvlot	ja
Zwemvesten	X 5
Veiligheidsharnas	ja
Radio-cd speler	ja

TUIGAGE

Tuigage	ja
Staan want	ja
Materiaal mast	aluminium
Grootzeil	X 2 (Lazy jack new)
Genua	X 2 (one brand new & one that needs repairs)
Spinnaker	ja
Stormfok	ja



Vallieren

Multifunctionele lieren

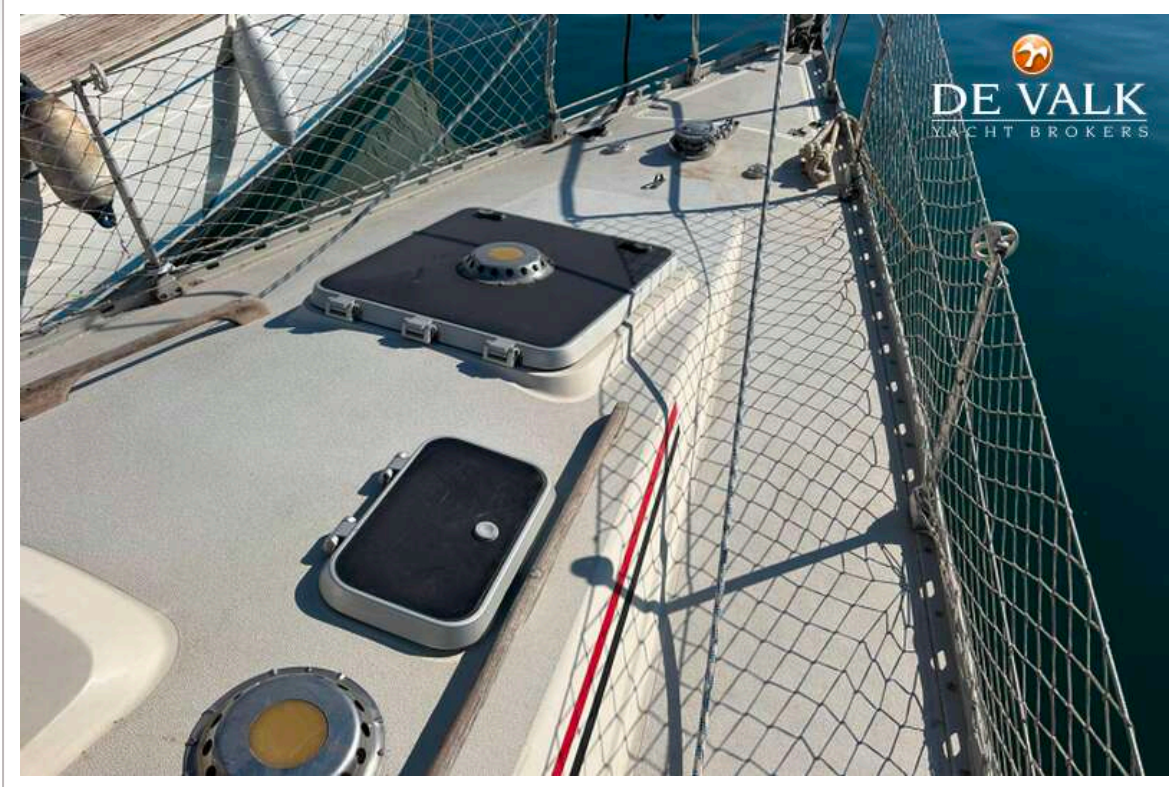
X1 electric

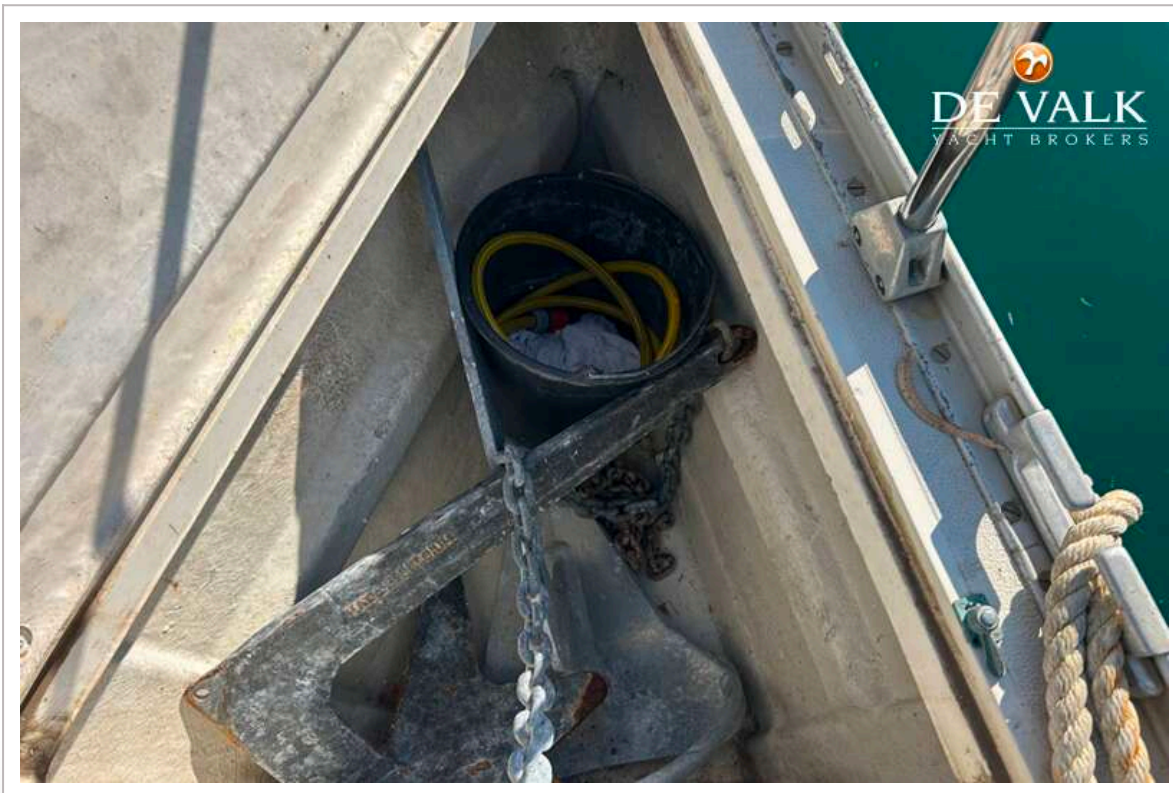
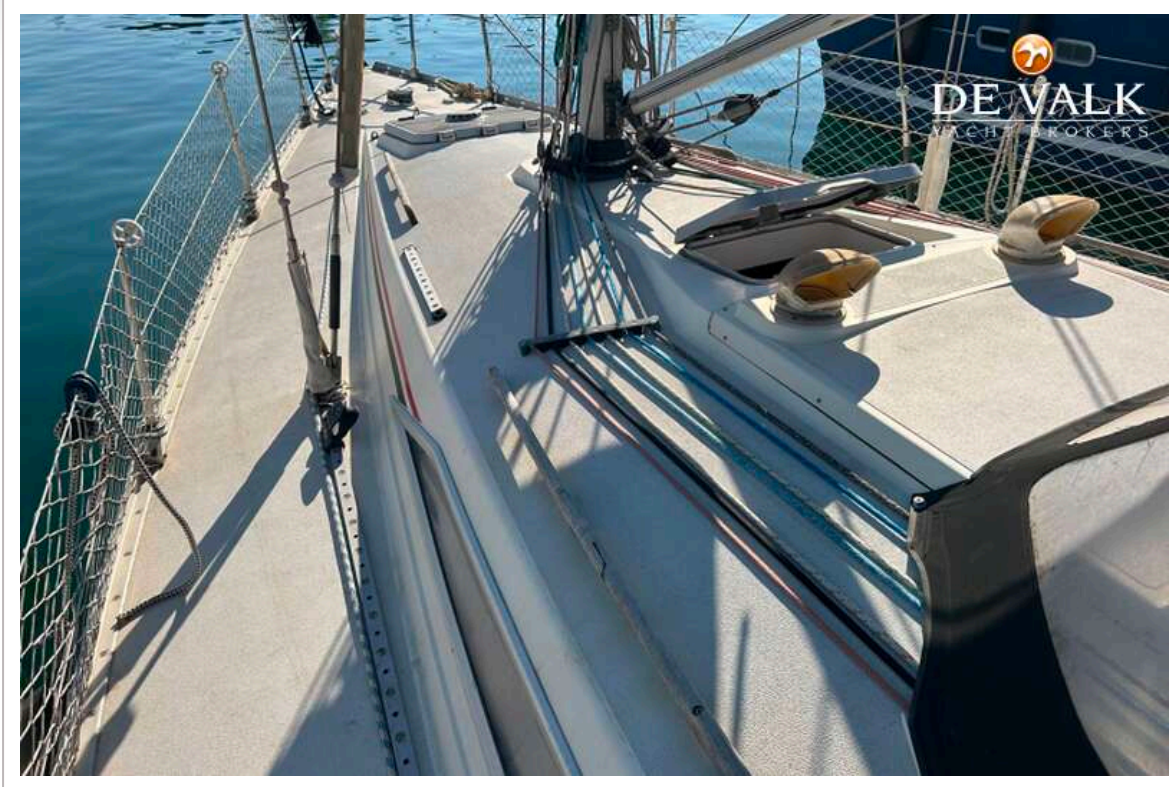
Manual x 5

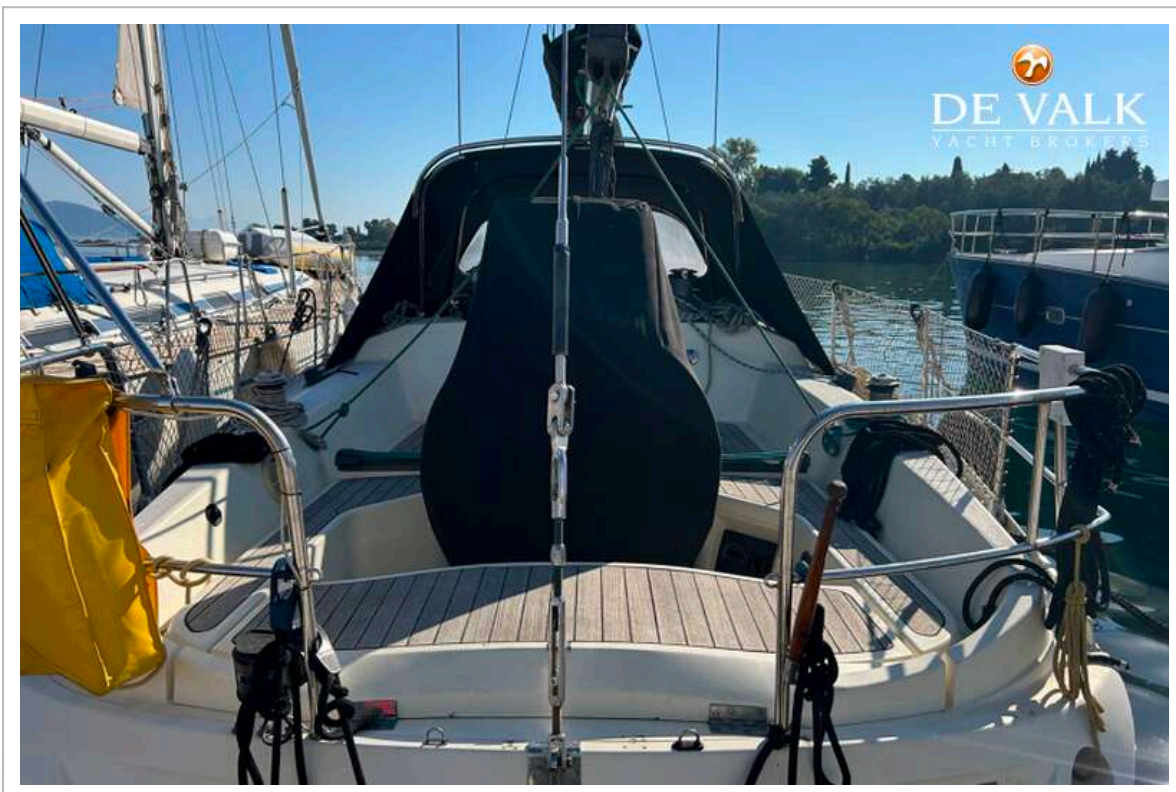
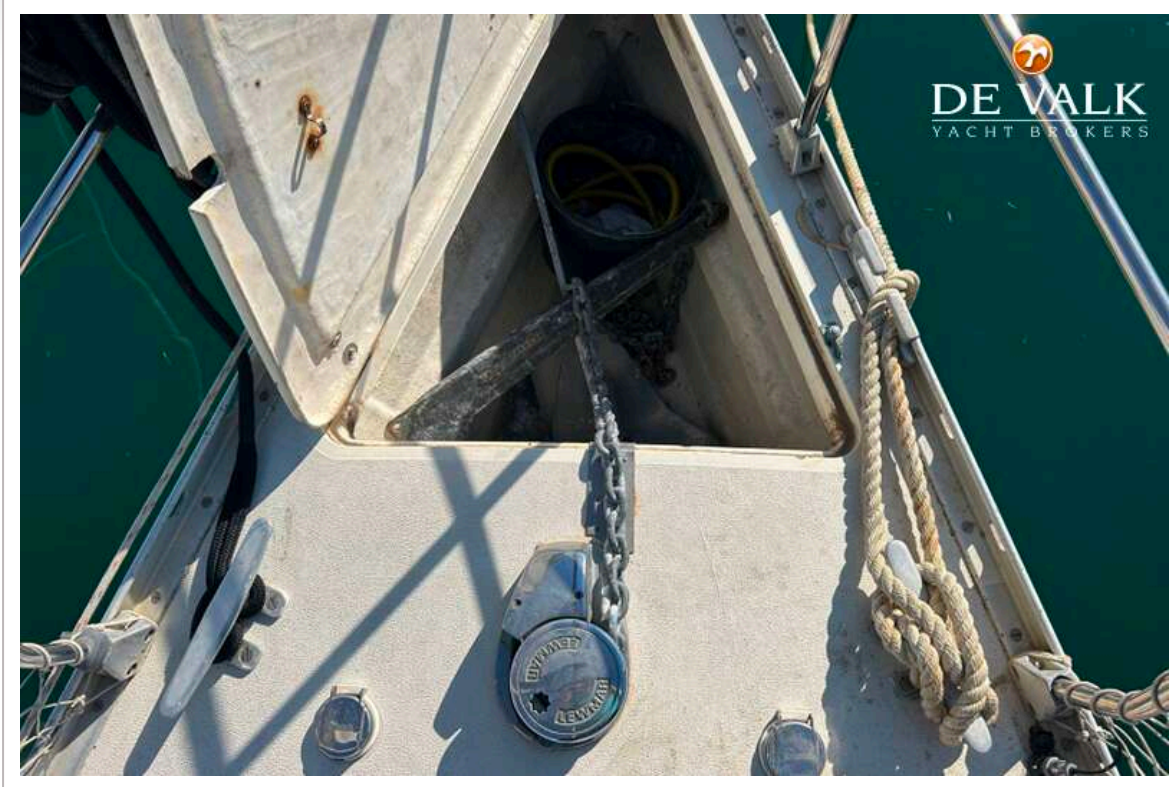


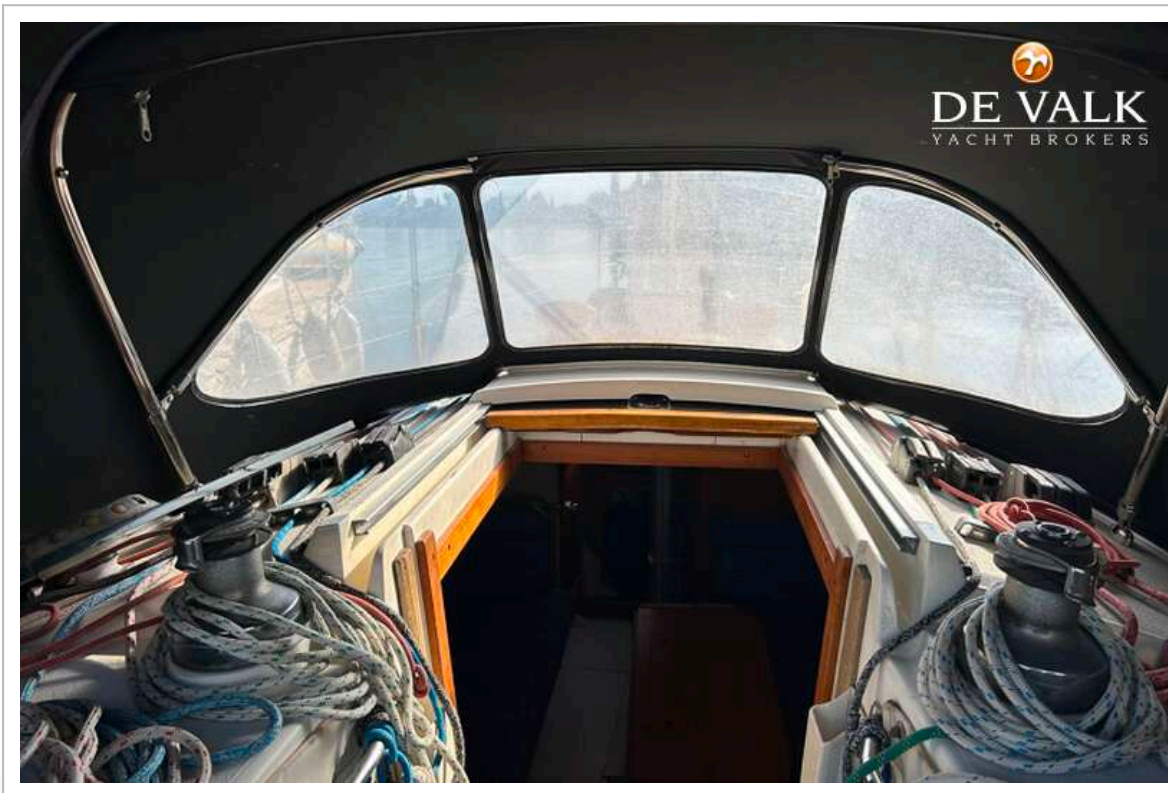


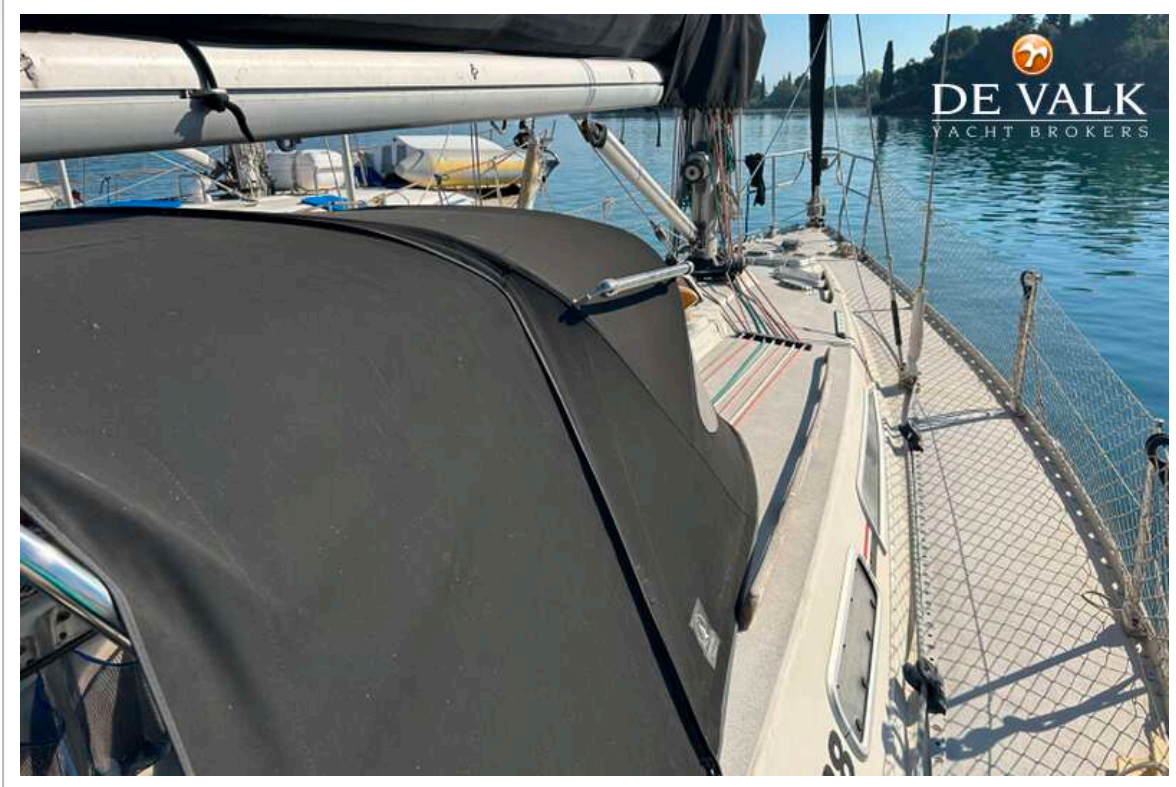








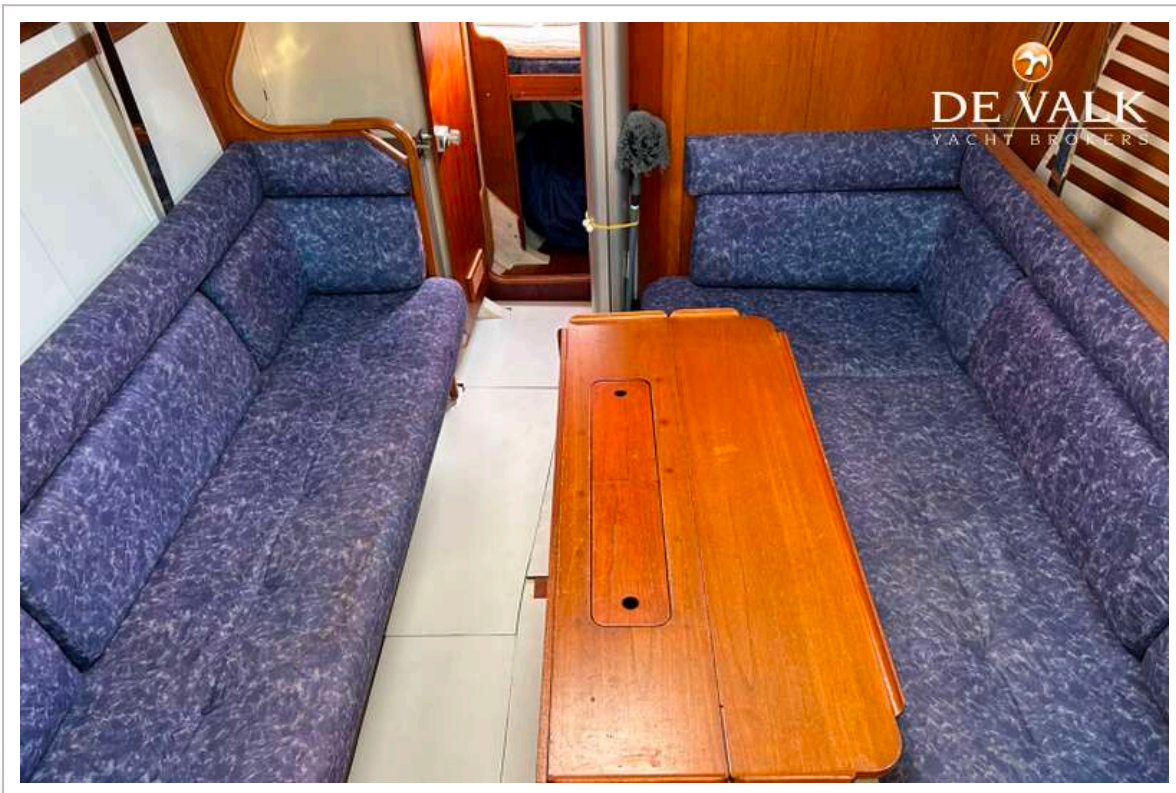


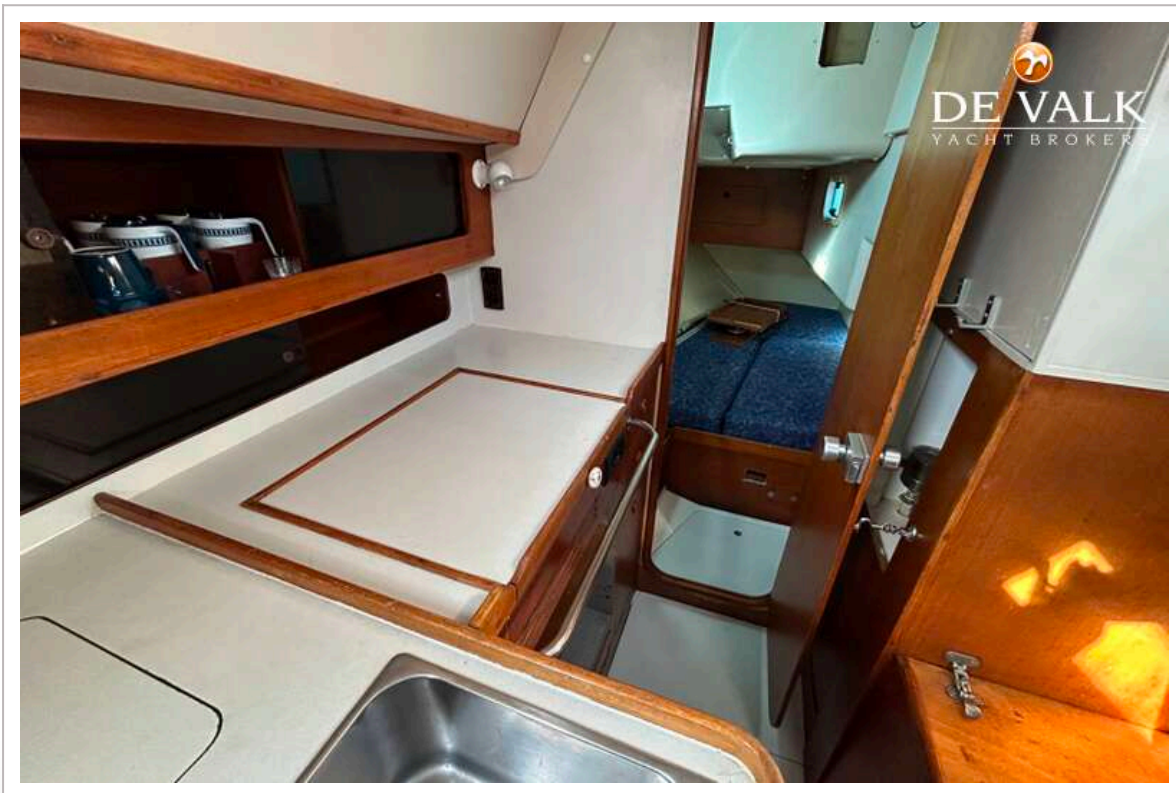


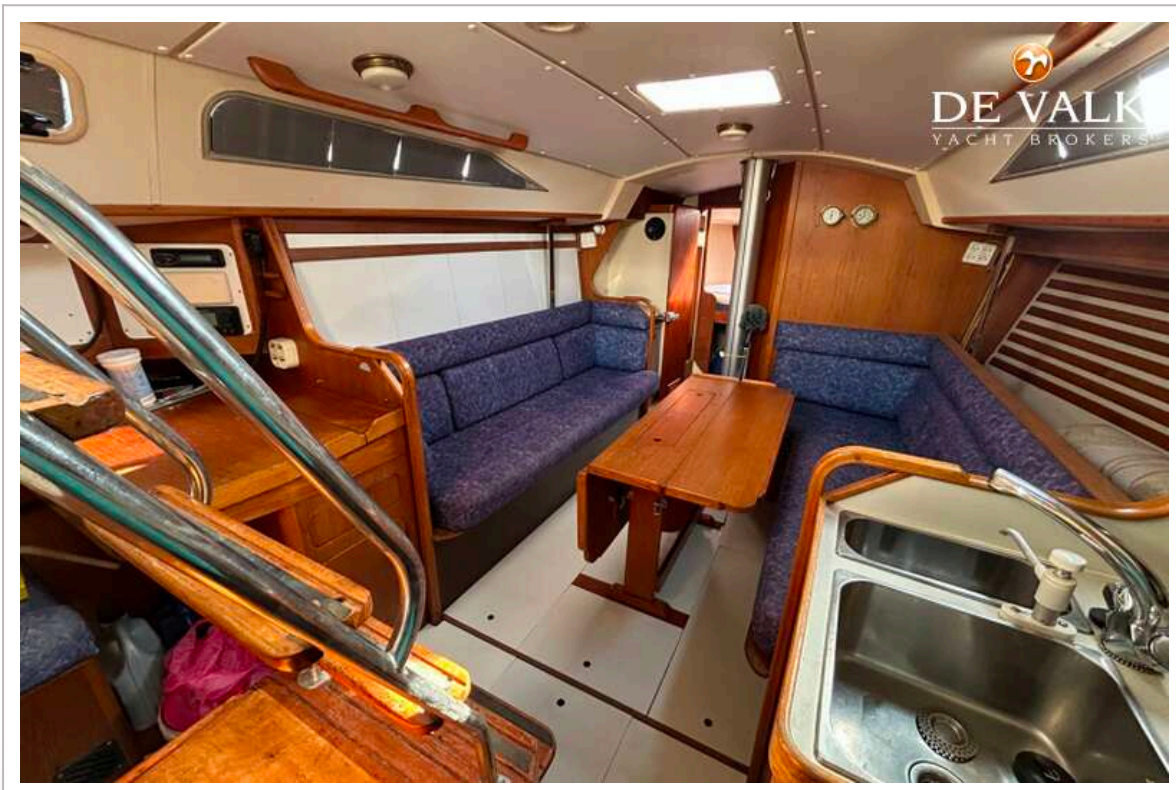
SIGMA 38

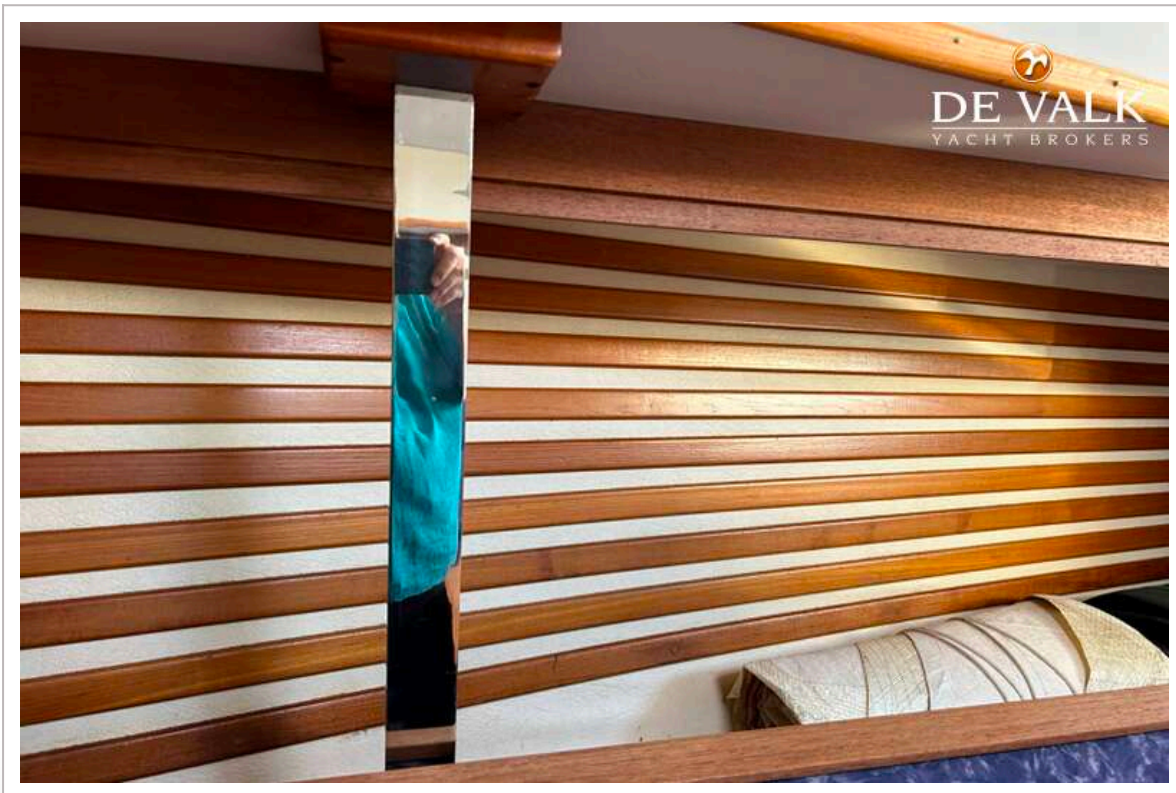


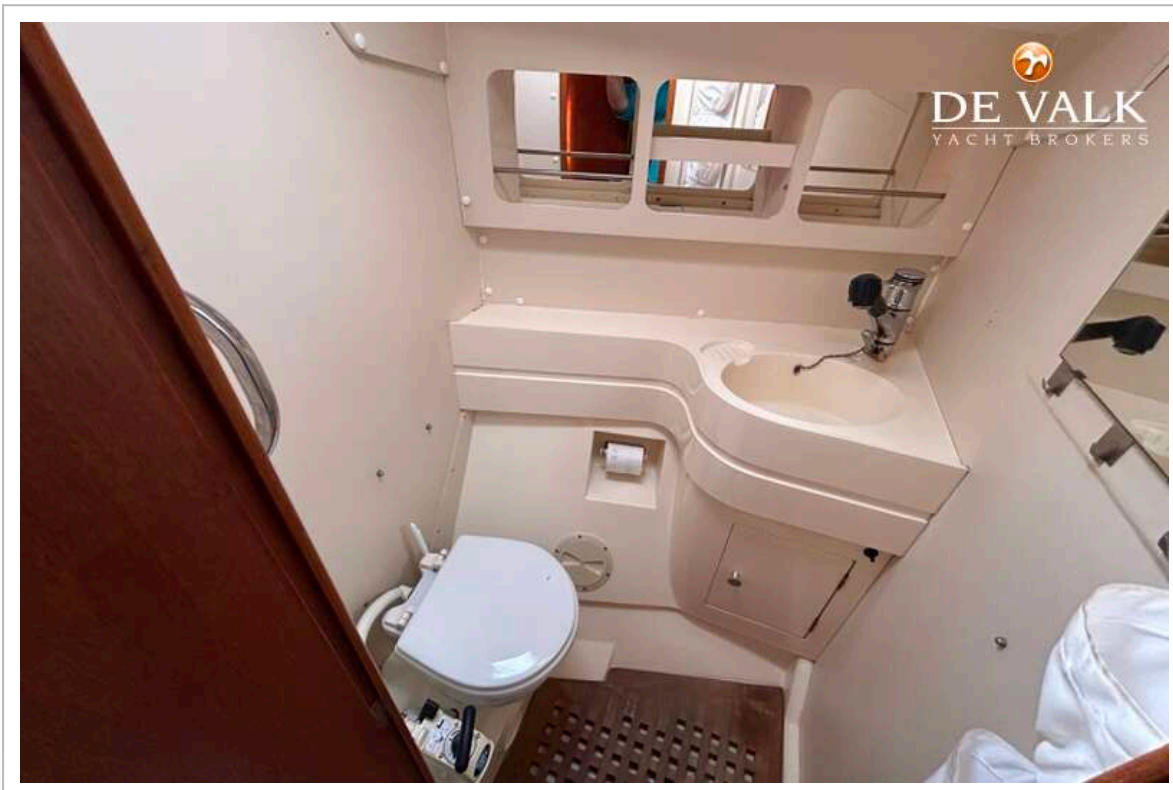
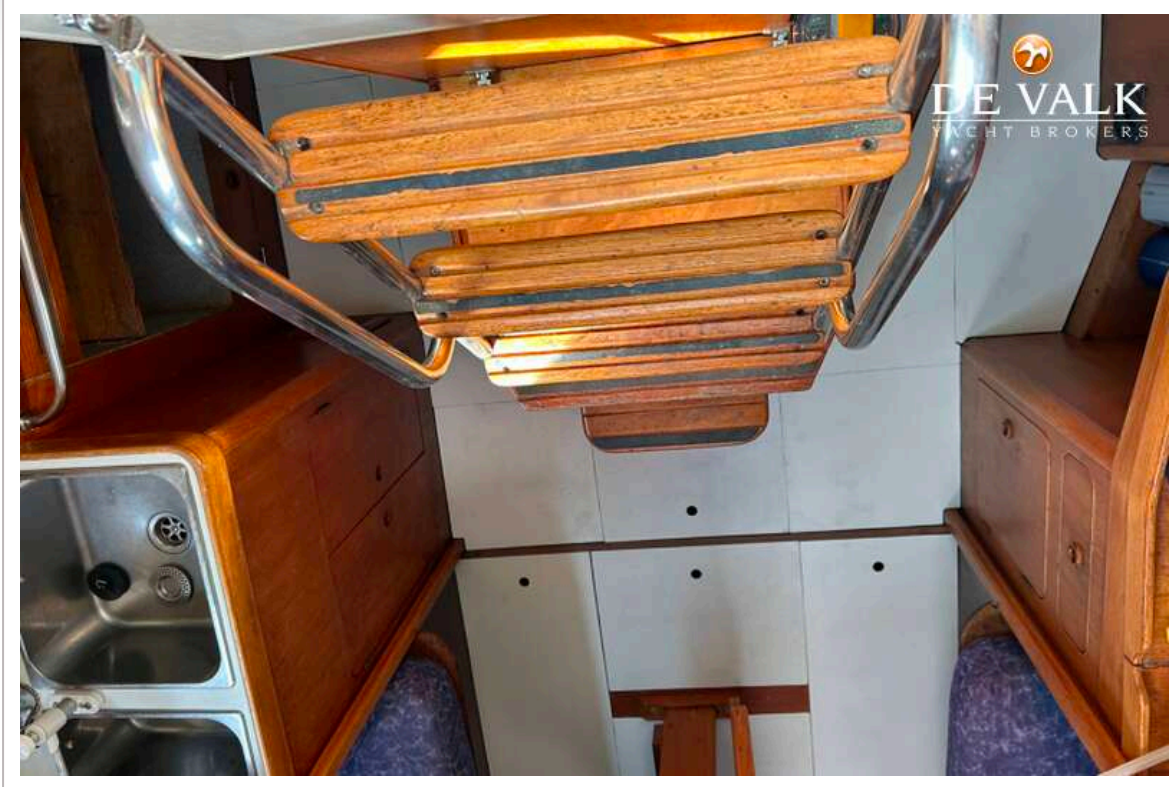
SIGMA 38

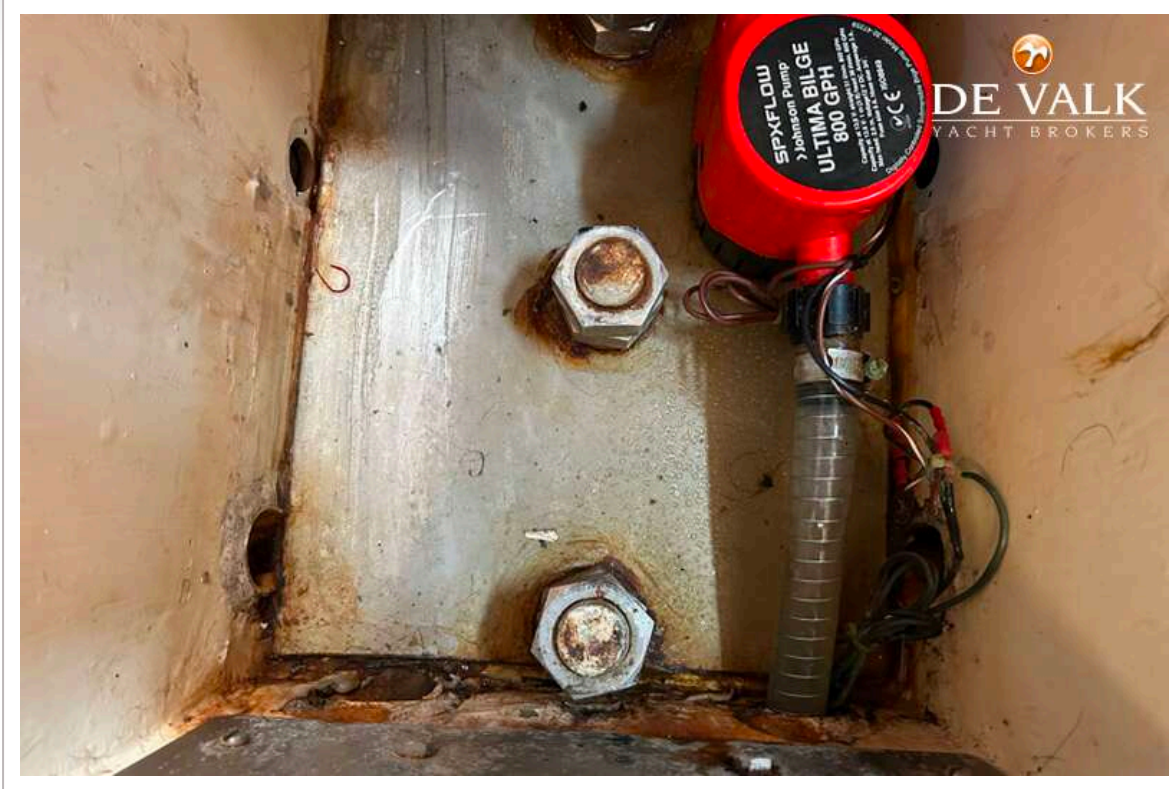


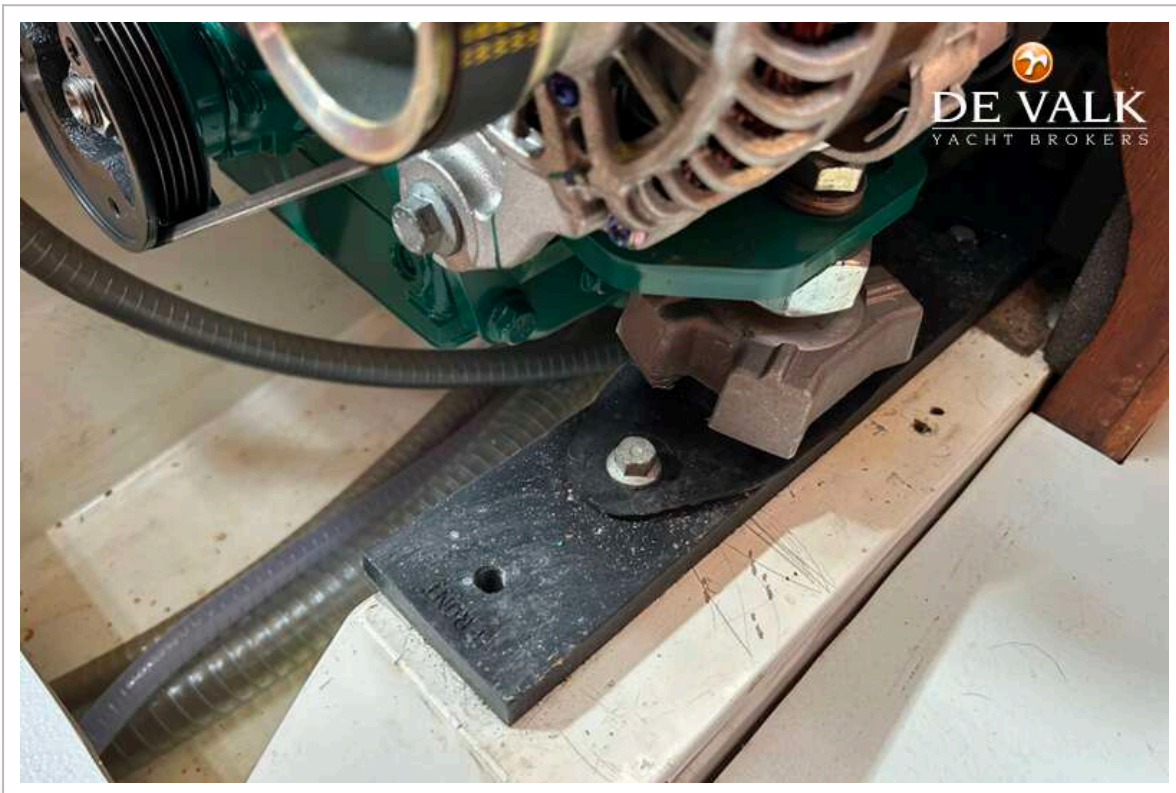
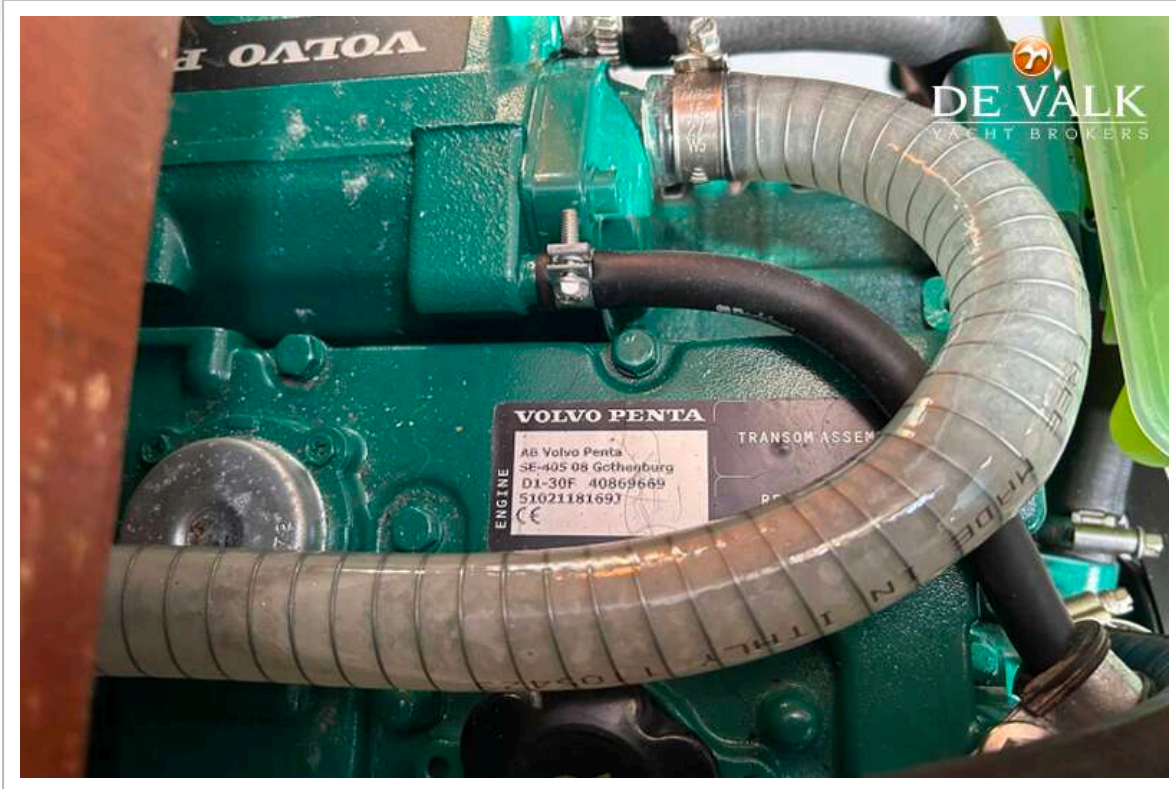


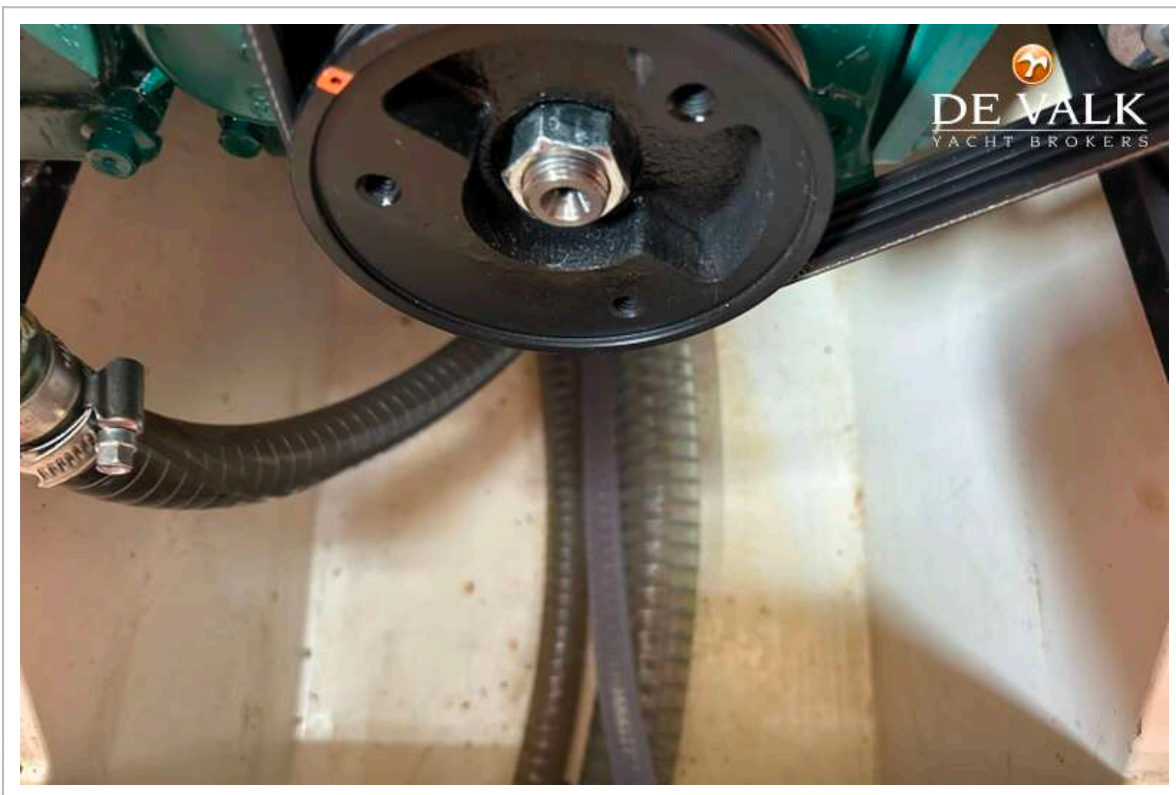
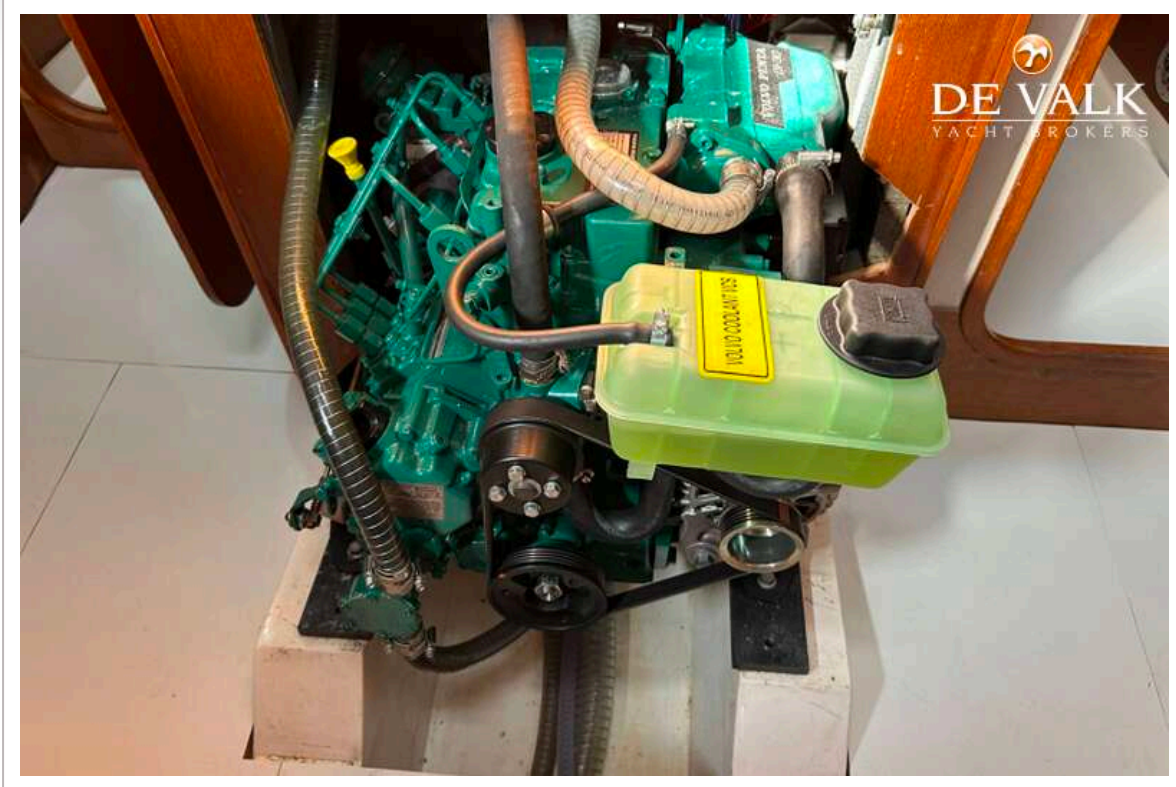















DE VALK
YACHT BROKERS

