



DE VALK
YACHT BROKERS



WAUQUIEZ CENTURION 49



DE VALK
YACHT BROKERS

WAUQUIEZ CENTURION 49

VAN DE MAKELAAR

Deze indrukwekkende Centurion 49 is ontworpen door Edward Dubois en met de hand gebouwd in glasvezel door de zeer gerenommeerde werf Wauquiez in Frankrijk. Zij is geconstrueerd met een sterke interne structuur en longitudinale versterkingen, ontworpen voor comfortabel zeilen over lange afstanden. Zij is een echte performance bluewater cruiser, uitstekend uitgerust met uitgebreide upgrades (alle gedocumenteerd) en een zeer omvangrijke inventaris. De huidige eigenaar heeft haar in 2009 aangekocht en zij is nu klaar om haar volgende eigenaren mee te nemen op hun volgende avontuur.

Zoë Ann Clark

SPECIFICATIES

Afmetingen	15.43 x 4.47 x 2.20 (m)	Bouwer	Wauquiez
Bouwjaar	1991	Hutten	3
Materiaal	Polyester	Slaapplaatsen	6
Motor(en)	1 x Yanmar 4JH2-HTE diesel	Pk/Kw	76.00 (pk), 55.94 (kw)
Vraagprijs	€ 99.000 (BTW Niet betaald)	Ligplaats	bij verkoopkantoor

CONTACT

Kantoor	De Valk Almeria	Telefoon	+34 950 497 825
Adres	Puerto Deportivo, Darsena de la Batea 42 04711 Almerimar ES	E-mail	almeria@devalk.nl

DISCLAIMER

Hoewel er uiterste zorg besteed is aan de correctheid, volledigheid en actualiteit van onze informatie kunnen hieraan geen rechten worden ontleend.



ALGEMEEN

Model	WAUQUIEZ CENTURION 49
Type	zeiljacht
Lengte (m)	15,43
Lengte waterlijn (m)	12,26
Breedte (m)	4,47
Diepgang (m)	2,20
Doorvaarhoogte (m)	22,00
Stahoogte (m)	1,88
Bouwjaar	1991
Gebouwd door	Wauquiez
Land	Frankrijk
Ontwerper	Ed Dubois/Dubois architects
Waterverplaatsing (t)	19
CE norm	NA
Romp materiaal	polyester
Romp kleur	wit
Huiddikte romp (mm)	>25mm
Rompvorm	V-shaped hull
Kiel type	vin kiel
Dek materiaal	polyester Sandwich
Afwerking dek	teak
Afwerking opbouw	anti-slip verf Awlgrip
Afwerking kuip	Teak-seats new 2012, teak floor, gelcoat finished FRP structure
Antifouling (jaar)	Micron 99 (2024)
Dorades	6
Raamlijsten	aluminium
Raammateriaal	perspex
Dekluik	Goiot acrylic
Radarbeugel	niet neerklapbaar Large Stainless Steel arch at stern Radar/Navcom/Solar
Brandstoftank (liter)	roestvast staal 312



Inhoudsmeter (brandstoftank)	Gauge at helm using Moeller reed relay sensor for reliability
Drinkwatertank (liter)	roestvast staal 4 x 150
Inhoudsmeter (drinkwatertank)	Gauge at helm using Moeller reed relay sensor for reliability
Vuilwatertank (liter)	epoxy 140
Vuilwatertank afvoer	Dip Tube and diaphragm pump overboard or deck fitting
Stuurwiel	kabelbesturing
Binnen stuurstand	Second A/P control at Nav station
Buiten stuurstand	kabelbesturing
Noodhelmstok	ja
Extra info verfsysteem	Hull topsides, and also cabin deck area painted in 2014
Extra info	Custom Keel with shallower draft 2.2m

ACCOMMODATIE

Hutten	3
Slaapplaatsen	6
Bemanningshut	Forward berth converted to utility / forward sail locker area
Vloer	Teak/Holley Plywood 12mm approx.
Vaste buiskap	Hard Dodger top with soft panels
Salon	Large Table and ample seating on stboard side
Stahoogte salon (m)	1.88
Verwarming	Webasto DWB2010 hydronic heater, thermostat each cabin.
Airco	Reverse Cycle 16,000 BTU Dometic AC and heat
Navigatie ruimte	Nav Station wth instruments and chart table desk
Kaartentafel	72cmx115cm Nav station with storage for charts below hinged desk
Achterkajuit	Two guest per aft cabin or ample room for one.
Ombouwbare kooi	The Salon table can drop to create additional sleeping place for
Keuken	Linear Galley across from Saloon table, behind Nav Station
Aanrechtblad	Ceramic countertop with refrigeration and freezer hatches
Spoelbak	roestvast staal
Kooktoestel	Princess three burner propane stove, original



Magnetron	ja
Koelkast	Two refrigerators: one drawer fridge and one hatch style fridge
Vriezer	1 hatch style freezer, plus 1 portable needs recharge
Warmwatersysteem	Isotemp stainless
Eigenaarshut	ja
Lengte bed (m)	2.03
Kledingkast	Hanging Closet, 2 large drawers under bed, and 3 small drawers
Badkamer	en suite
Toilet	en suite Raritan
Toilet Systeem	handbediening Drains to lift pump
Wasbak	in de badkamer Stainless Basin (upgrade) in forward head with hot/cold water.
Douche	en suite Hot and Cold water with temperature controlled thermostatic valv
Extra info	Make up settee / desk for dressing
Gastenhut 1	ja
Lengte bed (m)	2.01
Kledingkast	Converted to drawer refrigerator
Badkamer	gedeeld
Toilet	gedeeld
Toilet systeem	elektrisch Marine Excellence Raritan macerating toilet
Wasbak	bij het toilet Stainless Wash basin with hot/cold water, upgrades from orig
Douche	gedeeld Thermostatically controlled hot and cold shower mixer
Extra info	Head flooring rebuilt in teak and Holly plywood.
Gastenhut 2	ja
Lengte bed (m)	2.01
Kleerkast	Hanging locker 3 small drawers.
Badkamer	gedeeld

MOTOR(EN)

Aantal motoren	1
-----------------------	---



WAUQUIEZ CENTURION 49

Merk	Yanmar
Type	4JH2-HTE
Pk	76
kW	55.94
Brandstof	diesel
Gereviseerd in jaar	Full top/bottom rebuild in 2023. (Details available)
Maximale snelheid (kn)	8,5
Kruissnelheid (kn)	6,5
Verbruik (ltr/uur)	4,5
Bereik (nm)	400
Aandrijving	schroefas
Schroefas afdichting	Tides Marine Shaft seal,
Motorbediening	Teleflex Single lever control on wheel pedestal
Keerkoppeling	ZF15 MIV Vee drive (new 2024)
Elektrische motor	55kW (76 HP)
Boegschroef	Sidepower SE100/185T s/n #1016291 (new 2010) , APEM 1D15F1500 Jo
Uitlaatsysteem	Wet Exhaust HDI cast s/s water elbow, Verna-Lift fibreglass muff
Type schroef	PYI/ Maxprop EZ model 99420 S/N #19920153 (installed 2020)
Schroefbladen	4 blade
Materiaal schroefas	Aqualloy AQ22 M35 x 82inches Stainless (supplied by General Prop
Smering schroefas	Water lubricated
Handlenspomp	Bosworth diaphragm pump mounted at stern near helm
Elektrische lenspomp	Primary/Secondary 1500 (More info available)
Bilge alarm	Loud fire alarm mechanical bell 85dBA 12V
Generator	NextGeneration Power 3.5KW, w/ 1-cylinder 6HP Kubota Diesel engi
Draaiuren generator	<1900
Accu's	House: 5+3 8xVictron AGM 110AH VLRA
Startaccu	100AH AGM
Generatoraccu	70AH AGM



Boegschroefaccu	Bow Thruster connected to 3 house bankbatteries forward of mast,
Ankerlieraccu	Windlass connected to same bus system as Bow Thruster
Accu monitor	BMV-100 Victron with 500A , interfaced with NMEA2000 bus, Color
Acculader	3 Chargers provide redundancy & can be configured to max charge
Acculader/omvormer	3kW Victron Multiplus, wired in place. 2kW multiplus to be wired
Windgenerator	Silent Wind Generator mounted on aft pole, with MPPT charger
Zonnecellen	1x 2xSunpower 170W panels mounted on arch 80/20 frame, 1xSunpow
Walstroom	120/230 30Ampere US plug, 60 Hz
Scheidingstrafo	Victron auto switch 120/240V transformer.
Watermaker	Spectra Ventura 150 12 V (more info available)
Extra info	Alternator -Balmar 100A aux alt with Balmar external regulator
Extra info	Victron Color Control GX Display to control Multiplus charger
Extra info	More details availbale on Power Monitor

NAVIGATIE

Kompas	Plath compass (seals changed, rebuilt 2024)
Multi control dispaly	3 chart plotters. 1- Garmin 4212 (helm station) 1. Garmin 4212
Dieptemeter	Airmar transducer NMEA2000
Dieptemeter/log	Airmar transducer NMEA2000
Log	UST800 Airmar ultrasonic (needs troubleshooting/ repair)
Windmeetset	B&G wireless Masthead WS320 . FOUR Triton multidisplays installed
Marifoon	1. SIMRAD RS40 (new 2022) at Nav Station with HS40 remote (new
Autopiloot	RayMarine S3G controller with Type II autopilot. Spare Autopilo
Roerstand aanwijzer	RayMarine autopilot sensor mounted on rudder quadrant with custo
Radar	GMR424 XHD2 Garmin 4ft open array networked on 3 plotters
GPS	B&G ZG-100 GPS Sensor



Elektronische kaart(en)	Mediterranean, US & Canada, Eastern Caribbean (some will expire)
AIS transceiver	Garmin AIS800 with dedicated GPS receiver (new 2022) MMSI 36742
Epirb	ACR PLB37 with hydrostatic release on aft arch.
Navigatieverlichting	Red, Green, Aft, and Tricolor at masthead, Anchor Light, Steamin
Praai installatie	Mounted on aft arch / connected to radio, doubles as Fog Horn
Extra info	Starlink/ Sat Iridium Go/Maretron multi display/Extra Autopilot
Extra info	SSB Radio ICOM M802 with Pactor Modem

UITRUSTING

Buiskap met grijp-beugel	Grab Rails on hard dodger on port, starboard, and aft.
Vaste buiskap	Hard Dodger, custom made, -acrylic semirigid panels on zippers
Bimini	Bimini on custom stainless mount -recommend new mounting method
Kuipkussens	Closed Cell foam cushions (new covers 2024)
Kuiptafel	Custom teak cockpit table (new 2017)
Zwemplatform	Boat has a boarding area at stern for boarding
Zwemtrap	Boat has boarding ladder at stern, Stainless with teak steps.
Loopplank	Passerelle at stern
Dekdouche	Shower handle and hose inside compartment at stern, cold water
Anker	SPADE 35 kG galvanized anchor (new 2023) with WASI ball mount.
Ankerketting	120 meters Lofrans galvanised chain (new 2023)
Anker 2	Fortress large folding anchor
Ketting teller	AA560 Auto Anchor Chain Counter mounted at helm on port side
Extra ankergerie	Two Mantus 3/8 inch chain hooks for snubber use.
Ankerlier	MAXWELL 3500 vertical windlass 1.75 tons (new 2022)
Dekwasinstallatie	Groco pump type deck wash system with IPS 383 pressure switch
Bijboot	CARIBE SeaRover 290 Hypalon dinghy S/N CN HNB42165E222
Buitenboordmotor	2004? Johnson 15 HP (Serviced 2024) two stroke



Buitenboordmotorsteun	Welded custom mount part of aft arch and davit system
Davits	Custom heavy duty 0.089 wall thickness stainless steel tubing
Davits bediening	Manual 4:1 tackle, cam cleats
Handgreep (opbouw)	Heavy Teak Grab rails, varnished with two part varnish
Hekstoel	Stock pushpit integrated and welded into the overall arch
Preekstoel	Custom pulpit (2013) with step rail on top
Reddingsvlot	Viking 6 person ResC-you offshore raft (new 2020)
Reddingsvlot (pers)	6 person
Reddingsvlot laatst gekeurd	Inspected by Viking Italy Central facility in 2024
Zwemvesten	Mae West type life preservers
Joon	SWITLIK MOM 8-S autoinflating marker (new 2020, needs inspecti
Veiligheidslijnen op dek	Two Wichard Jacklines onboard, for port and starboard
Trossensnijder	AB Marine Shark Shaft line cutter (new 2020)
Hoorn	See further information
Verrekijker	Fujinon 7x50 binoculars aboard.
Radar reflektor	ECHOMAX 230 radar reflectoron mast
Stootkussens	ja
Landvasten	ja
Gereedschap	ja
Alarm systeem	Siren Marine Alarm system. Bilge,voltage,IR intrusion sensors.
TV	TV/ Computer: All in one Samsung ATIV
Radio-cd speler	Alpine CDE-SXM145BT Radio /CD player (new 2019)
Kuipspeakers	Need replacement
Speakers in salon	Bose Speakers fore and aaft of the salon starboard side
Klok - barometer	Barometer - Wheems and Plath mechanical barometer
Brandblusser	3x Kidde L635007 15lbs rated ABC, one halon, one kitchen
Brandblusser laatst gekeurd	Unknown, sold as is.

TUIGAGE

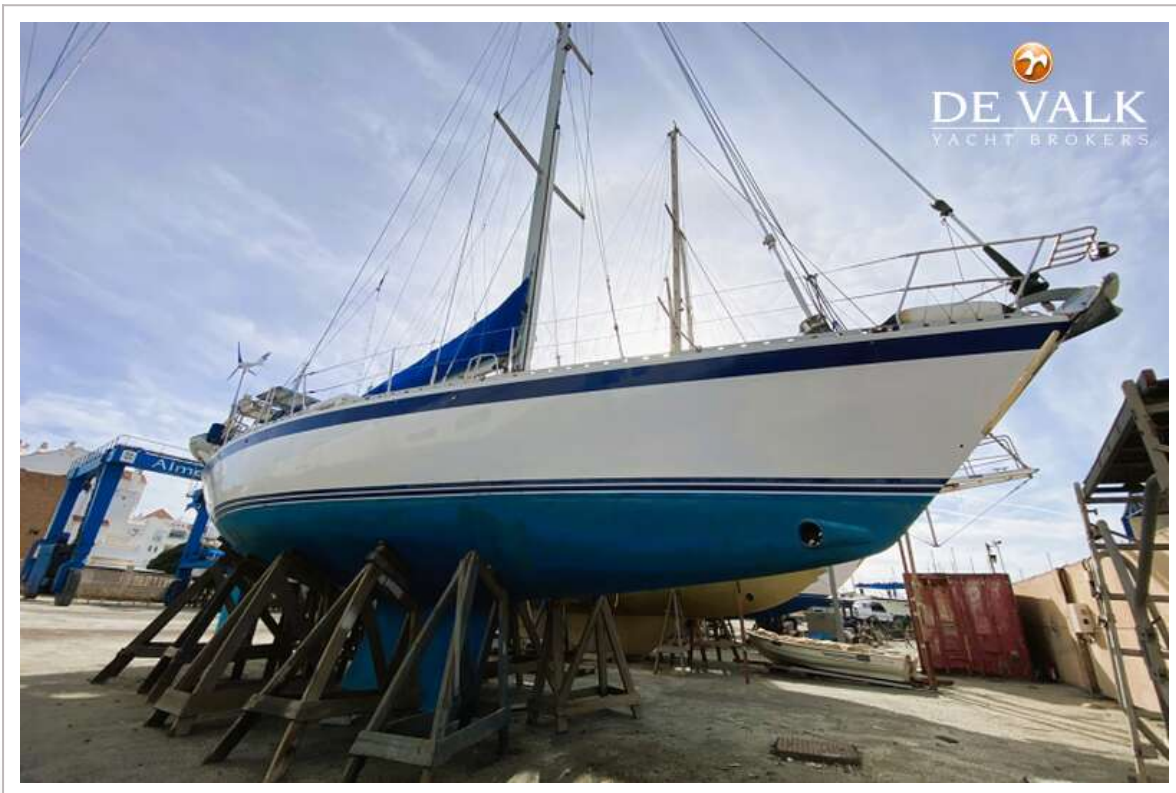
Tuigage	Sloop with Solent inner forestay, split backstay, single D1
----------------	---

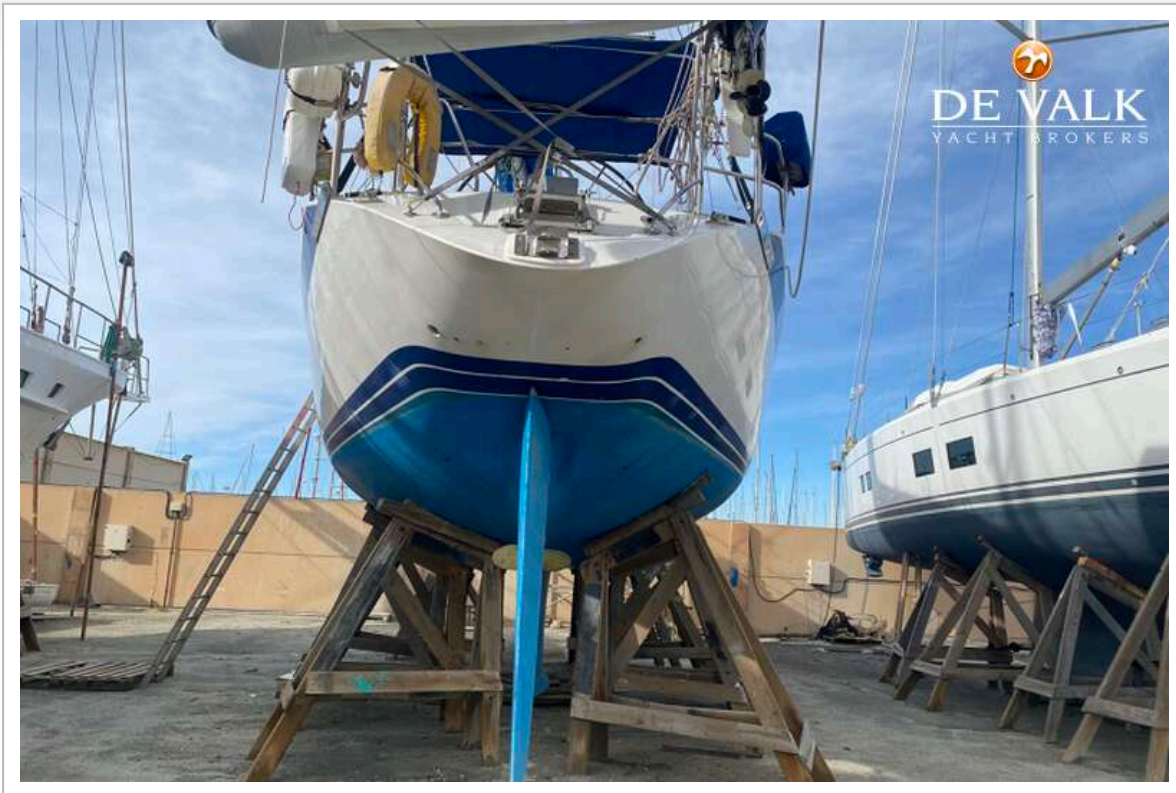


Staad want	Full replacement 2024
Merk mast	Sparcraft
Materiaal mast	aluminium
Zalingen	Three foil shaped spreaders, discontinuous rigging
Doorgestoken mast	Mast step on main bulkhead longitudinal
Grootzeilhuik	Stack Pack (MAC) modified for strenght (zipper end needs stitch)
Gelagerde karren	STRONG slide track system by Tides Marine
Doorgelat grootzeil	Full Batten Quantum Mainsail, 597 sq ft (56m2), 9 oz, 3 reef pts
Kotterstag	Solent Stay with roller furling on inner jib
Genua	Quantum sails 120% 9 oz dacron 719 sq ft (67m2)
Genua rolreefsysteem	Harken MARK III Unit 2.5
Genua hoes	UV white Sunbrella on Furling Genoa
A-symmetrische spi	Asymetric cruising spinnaker .75 oz in ATN sock system, sheets
Stagzeil	Quantum sails Solent 95% of inner triangle 374 ft2 (35m2)
Wegneembare binnen voorstag	Permanent roller furler
Stormgrootzeil	(three reefs in mainsail)
Stormfok	Hank On sail, can be modified if desired (Prefer Solent sail)
Reefinstallatie	Schaeffer Solent sail furler 3100-44 (Installed 201)
Achterstagspanner	Harken dual hydraulic pistons for split backstay helm new 2018
Giekneerhouder	hydraulisch Navtec boom vang controlled from helm panel (Rebuilt 2014)
Primaire schootlieren	Harken Barbarossa 66.2
Secondaire schootlieren	Harken Barbarossa 56.2
Vallieren	Harken Barbarossa port and starboard at mast
Spinnaker lieren	Running Backstay Harken Barbarossa 42.2
Reeflier	Genoa Harken Barbarossa 42.3
Multifunctionele lieren	Port and Starboard deck house winches for mainsheet, pole, reefs
Spinnakerboom	Spinnaker pole, slide car track with control winch on mast
Geïsoleerde achterstag	SSB Insulators for backstay replaced 2024 along with rig refit
Extra info	Port and Starboard Triple Spinlock stoppers on deckhouse
Extra info	Port and Starboard custom triple pad eyes on deck house,



WAUQUIEZ CENTURION 49



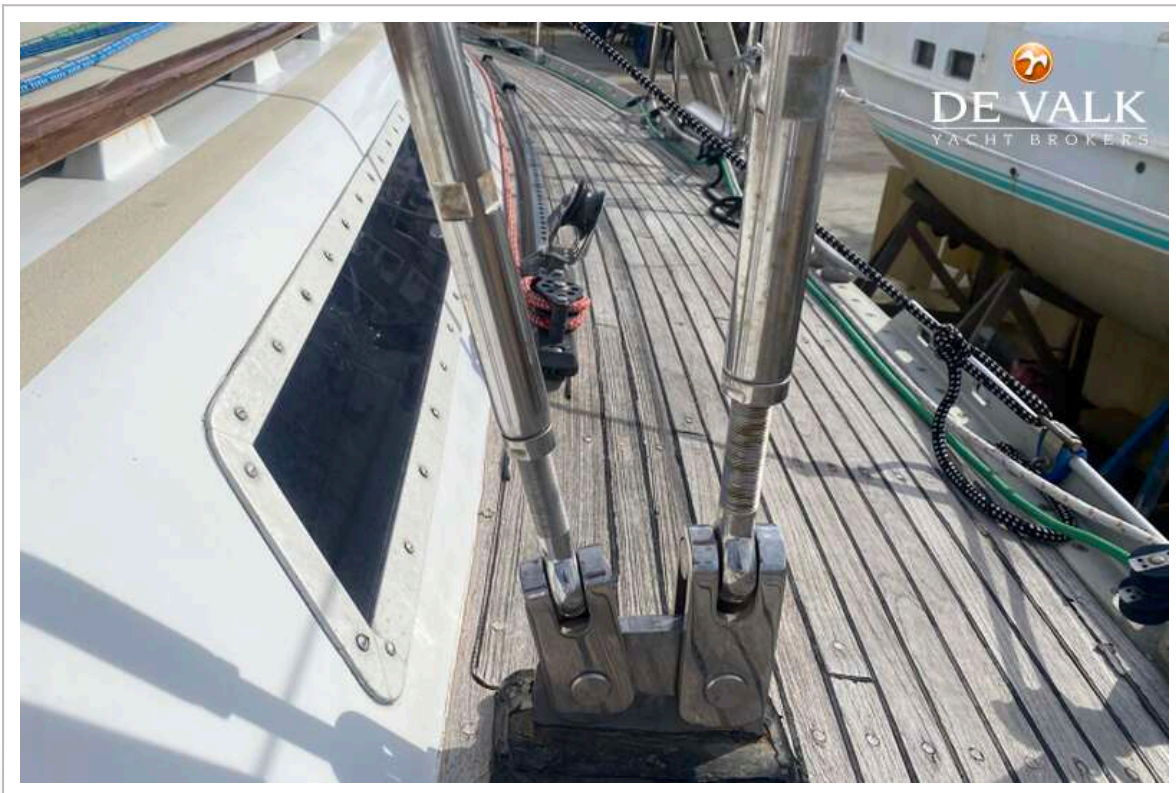
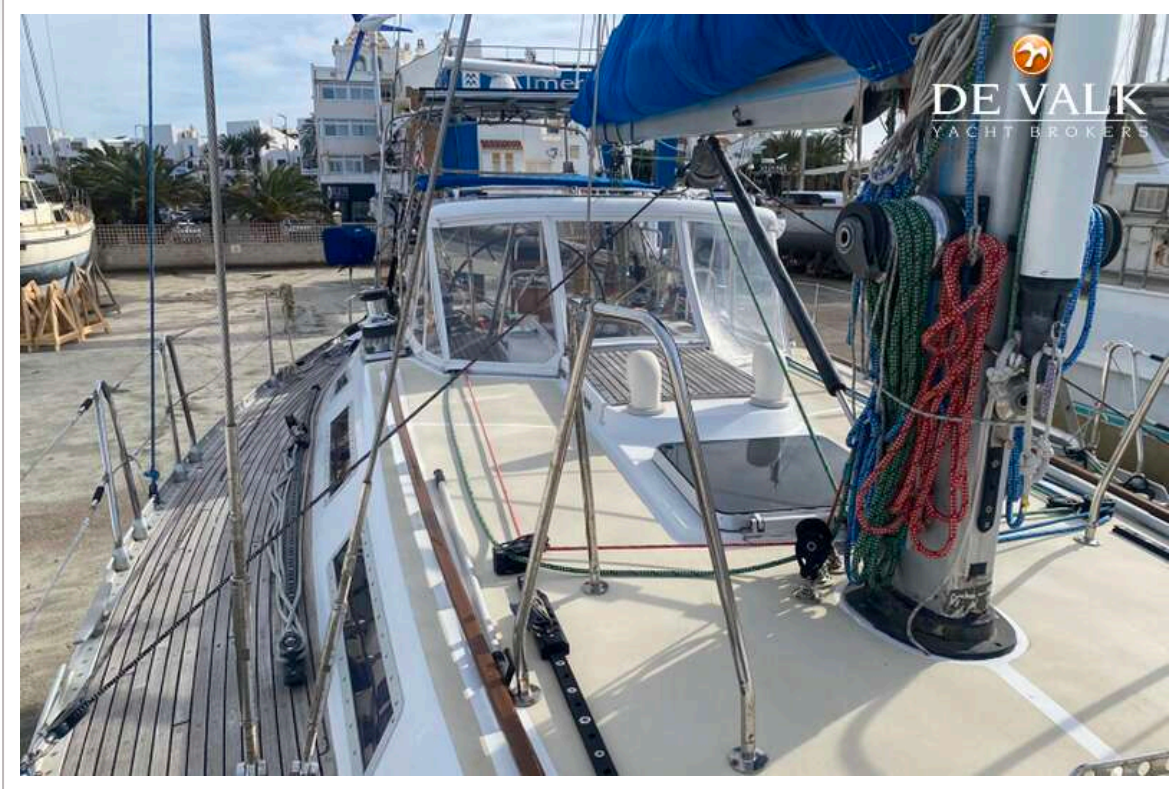




WAUQUIEZ CENTURION 49

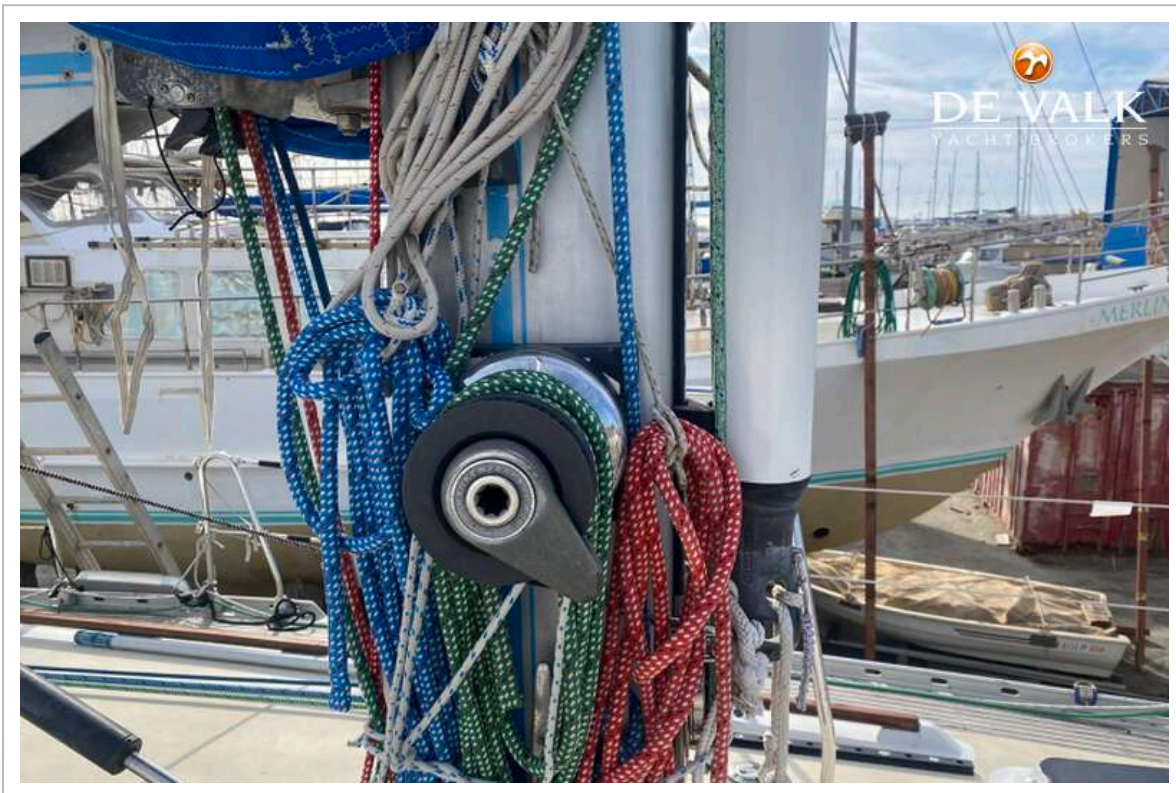


WAUQUIEZ CENTURION 49

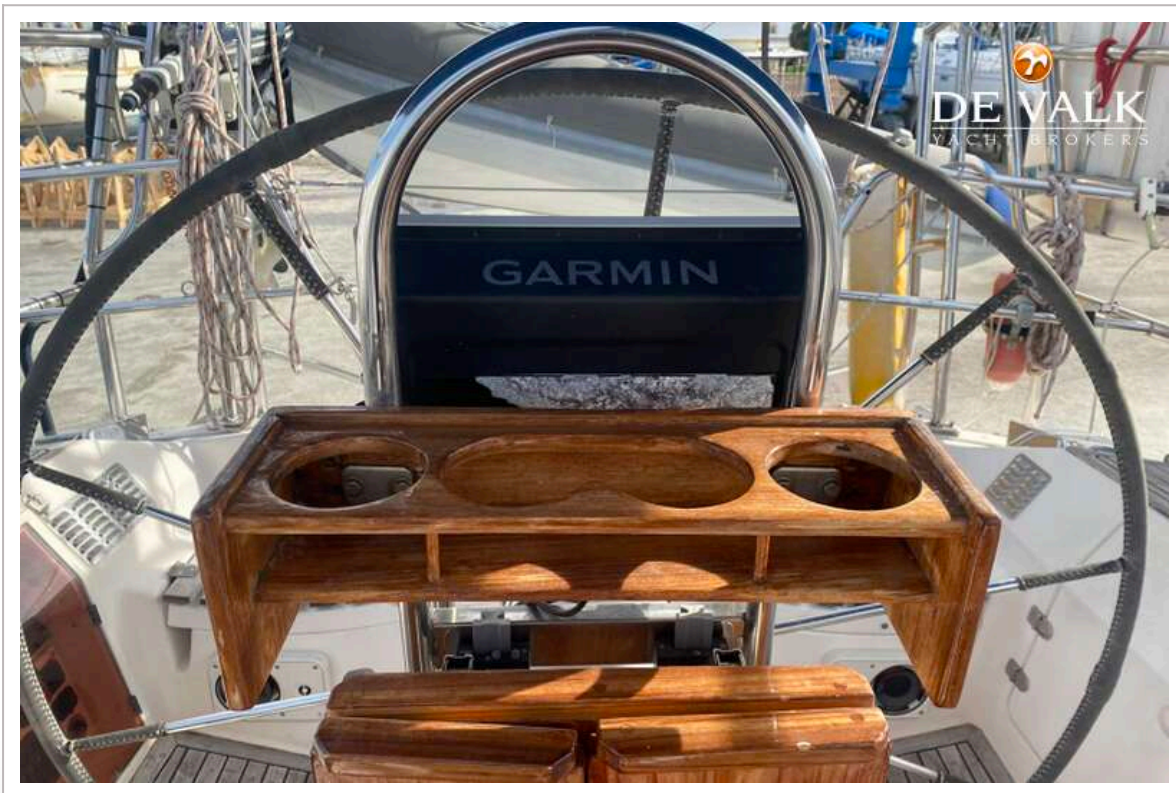


WAUQUIEZ CENTURION 49





WAUQUIEZ CENTURION 49



WAUQUIEZ CENTURION 49





WAUQUIEZ CENTURION 49



WAUQUIEZ CENTURION 49

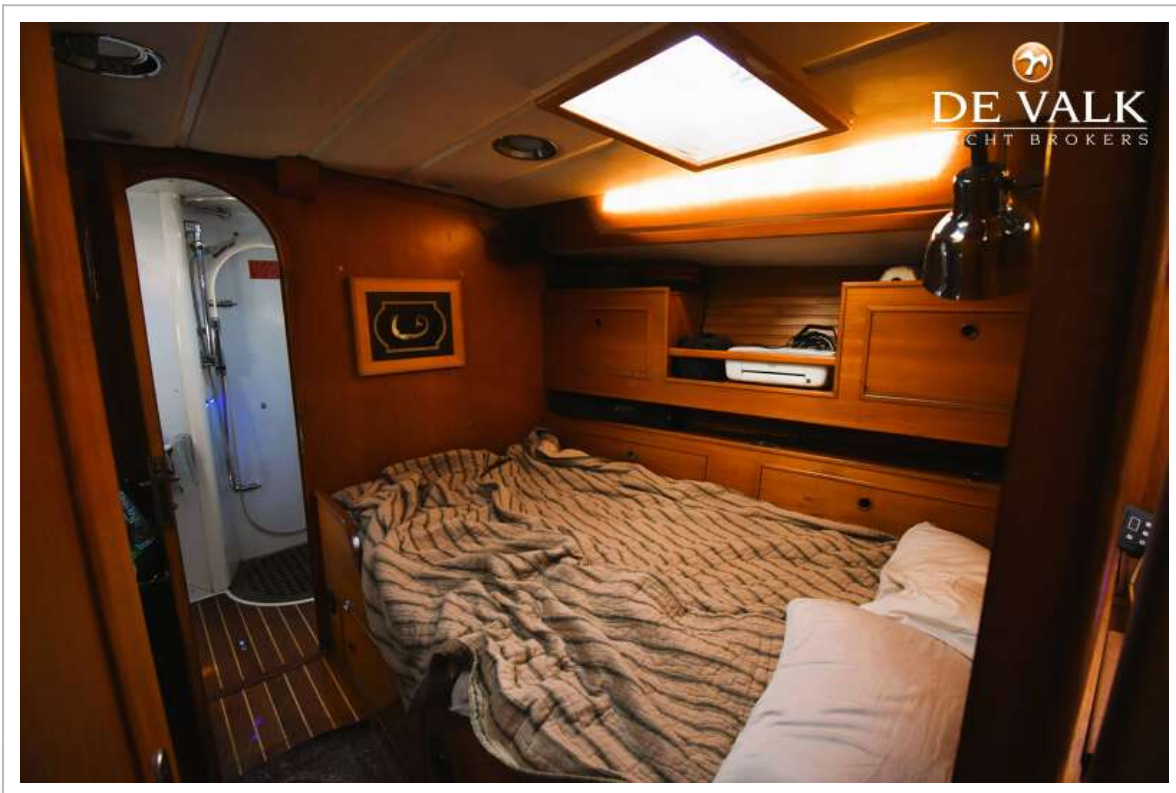




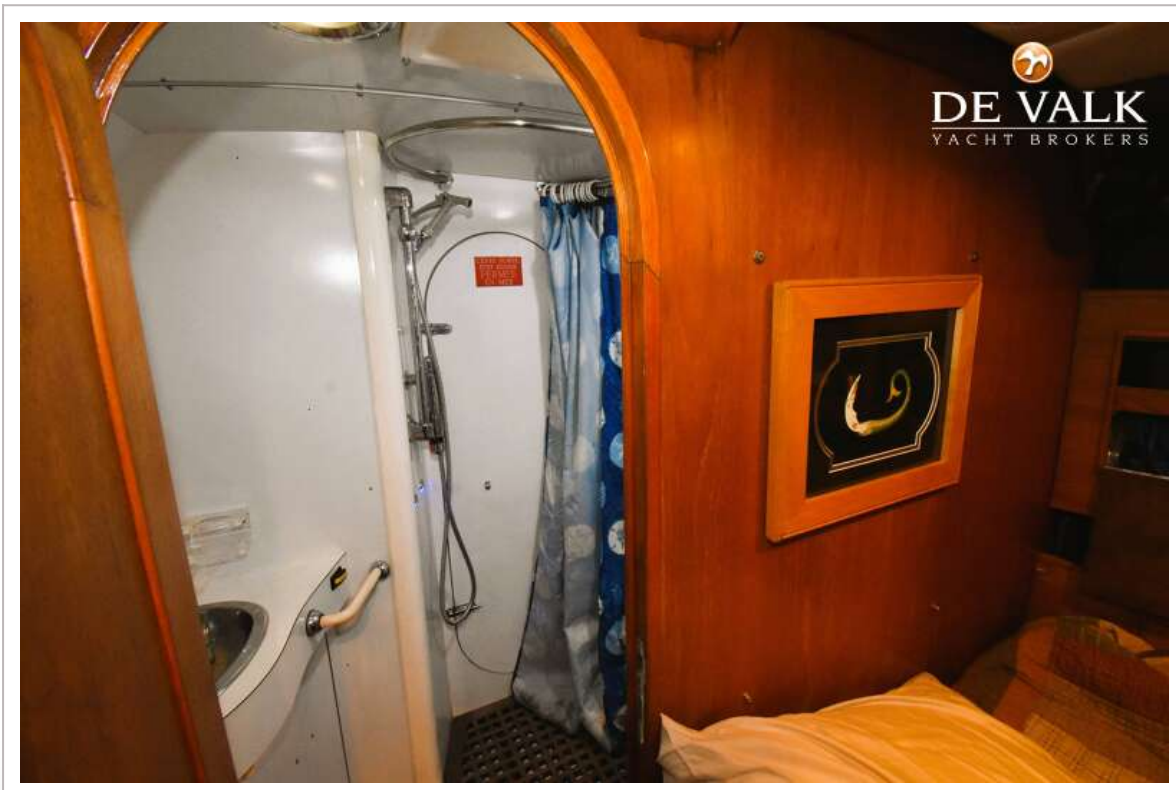
WAUQUIEZ CENTURION 49



WAUQUIEZ CENTURION 49



WAUQUIEZ CENTURION 49



WAUQUIEZ CENTURION 49

