



DE VALK
YACHT BROKERS



DAY PASSENGERS SHIP 25 M



DE VALK
YACHT BROKERS

DAY PASSENGERS SHIP 25 M

VAN DE MAKELAAR

Day passengers ship 25 m refitted in 2024 and in operation as a liner all year round in Greece. Antifouled in 2025 and maintained excellently by the current owner who has constructed her. Class: INSB, Hellenic Merchant Ships Inspection Service. A1 GMDSS. Capacity: 200 PAX..

Sofia Iliia-Salvanou

SPECIFICATIES

Afmetingen	24.95 x 7.00 x 1.98 (m)	Bouwer	Panagiotakis Shipyard Perama Piraeus
Bouwjaar	1998	Hutten	
Materiaal	Staal	Slaapplaatsen	
Motor(en)	2 x SCANIA DI16043M02P diesel	Pk/Kw	2 x 275.00 (pk), 202.40 (kw)
Vraagprijs	€ 1.150.000 (BTW Niet betaald)	Ligplaats	elders / niet bij verkoopkantoor

CONTACT

Kantoor	De Valk Corfu	Telefoon	(+30) 6948681503
Adres	New Port of Corfu, near Gouvia Marina 490 83 Corfu GR	E-mail	corfu@devalk.nl

DISCLAIMER

Hoewel er uiterste zorg besteed is aan de correctheid, volledigheid en actualiteit van onze informatie kunnen hieraan geen rechten worden ontleend.



DAY PASSENGERS SHIP 25 M

ALGEMEEN

Model	DAY PASSENGERS SHIP 25 M
Type	motorjacht
Lengte (m)	24,95
Lengte waterlijn (m)	22,45
Breedte (m)	7,00
Diepgang (m)	1,98
Bouwjaar	1998
Gebouwd door	Panagiotakis Shipyard Perama Piraeus
Land	Griekenland
Waterverplaatsing (t)	102,8
Bruto tonnage	119
Romp materiaal	staal
Romp kleur	wit
Materiaal opbouw	staal
Dek materiaal	staal
Afwerking dek	anti-slip verf
Antifouling (jaar)	August 2025
Dekluik	ja
Patrijspooten	ja
Brandstoftank (liter)	12.000
Inhoudsmeter (brandstoftank)	ja
Inhoudsmeter (dagtank)	ja
Drinkwatertank (liter)	2.000
Inhoudsmeter (drinkwatertank)	ja
Vuilwatertank (liter)	Bio treatment
Stuurwiel	ja
Noodhelmstok	ja
Extra info	Hull survey report-Ultra sonic test
Extra info	DWT: 22,39 Tons



ACCOMMODATIE

Salon	ja
Airco	ja
Openslaande deur achterdek	ja
Keuken	ja
Aanrechtblad	ja
Spoelbak	ja
Koelkast	ja
Warmwatersysteem	ja
Waterdruksysteem	ja
Koffiezetapparaat	ja

MOTOR(EN)

Aantal motoren	2
Merk	SCANIA
Type	DI16043M02P
Pk	275
kW	202.40
Brandstof	diesel
Geïnstalleerd in jaar	2008
Gereviseerd in jaar	2024
Maximale snelheid (kn)	14
Kruissnelheid (kn)	12
Verbruik (ltr/uur)	53
Aandrijving	schroefas
Schroefas afdichting	ja
Type schroef	vast
Materiaal schroefas	roestvast staal
Elektrische lenspomp	ja
Elektrische installatie	ja
Generator	MERCEDES recently serviced



Draaiuren generator	2000
Generator 2	DEUTCH, recently serviced
Draaiuren generator 2	2000
Accu's	2023
Startaccu	2023
Lichtaccu	2023
Generatoraccu	ja
Accu monitor	ja
Acculader	ja
Acculader/omvormer	ja

NAVIGATIE

Kompas	ja
Dieptemeter	ja
Marifoon	ja
Plotter/GPS	ja
Epirb	ja
Navigatieverlichting	ja

UITRUSTING

Zonnetent	ja
Deur in spiegel	ja
Loopplank	ja
Anker	ja
Ankerketting	ja
Ankerlier	ja
Reddingsvlot	ja
Zwemvesten	ja
Stootkussens	ja
Landvasten	ja
Reserve onderdelen	ja



Gereedschap	ja
TV	ja
Brandblusser	ja
Brandblusser in motorkamer	ja



DAY PASSENGERS SHIP 25 M



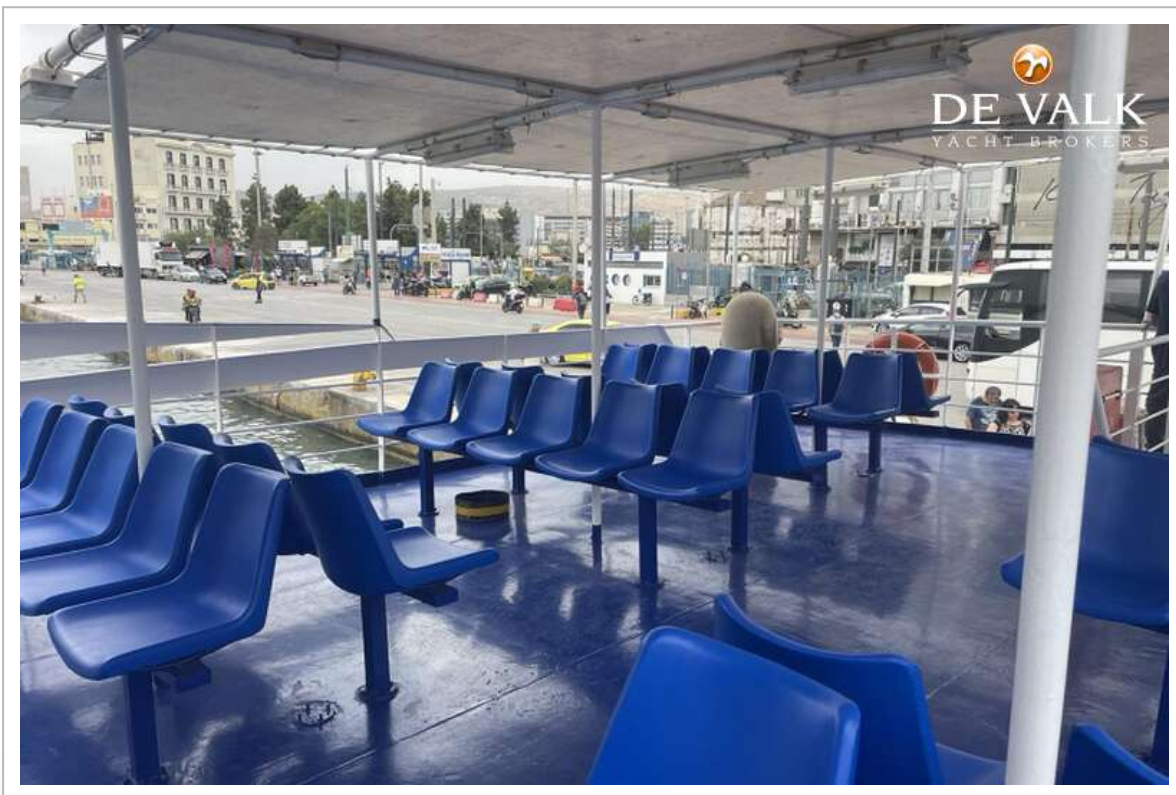
DAY PASSENGERS SHIP 25 M



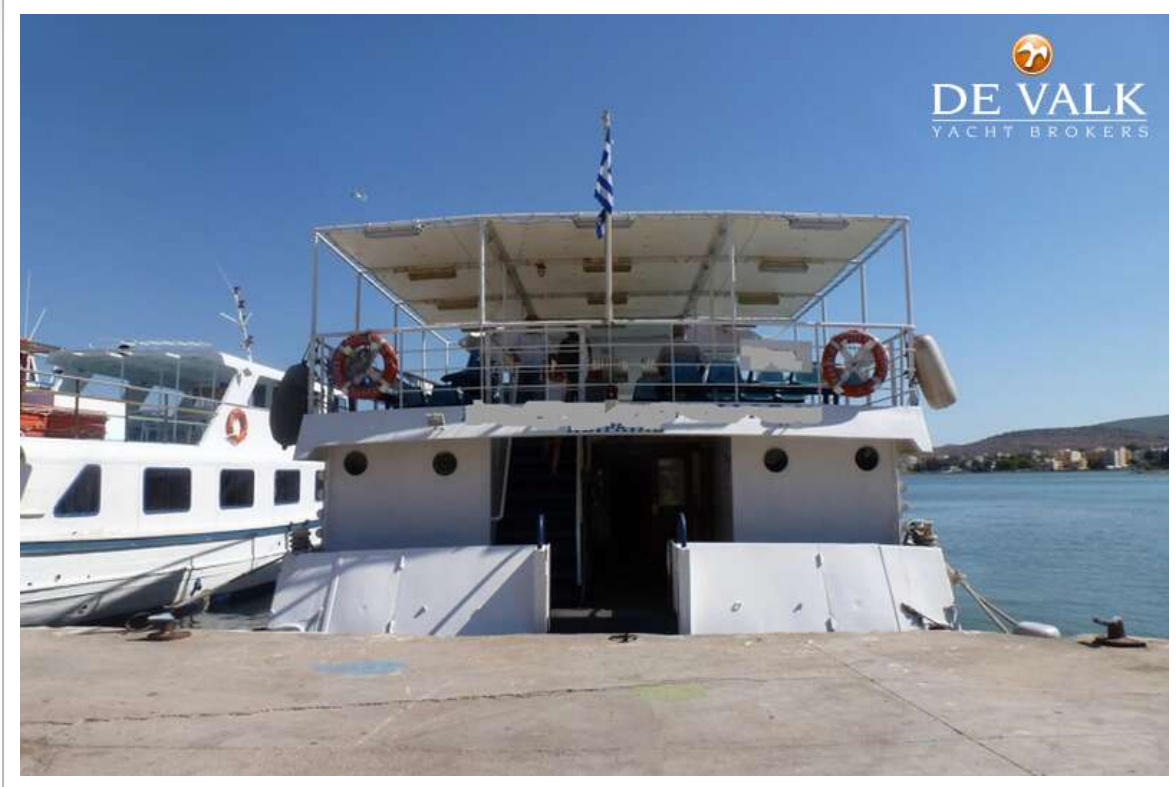
DAY PASSENGERS SHIP 25 M



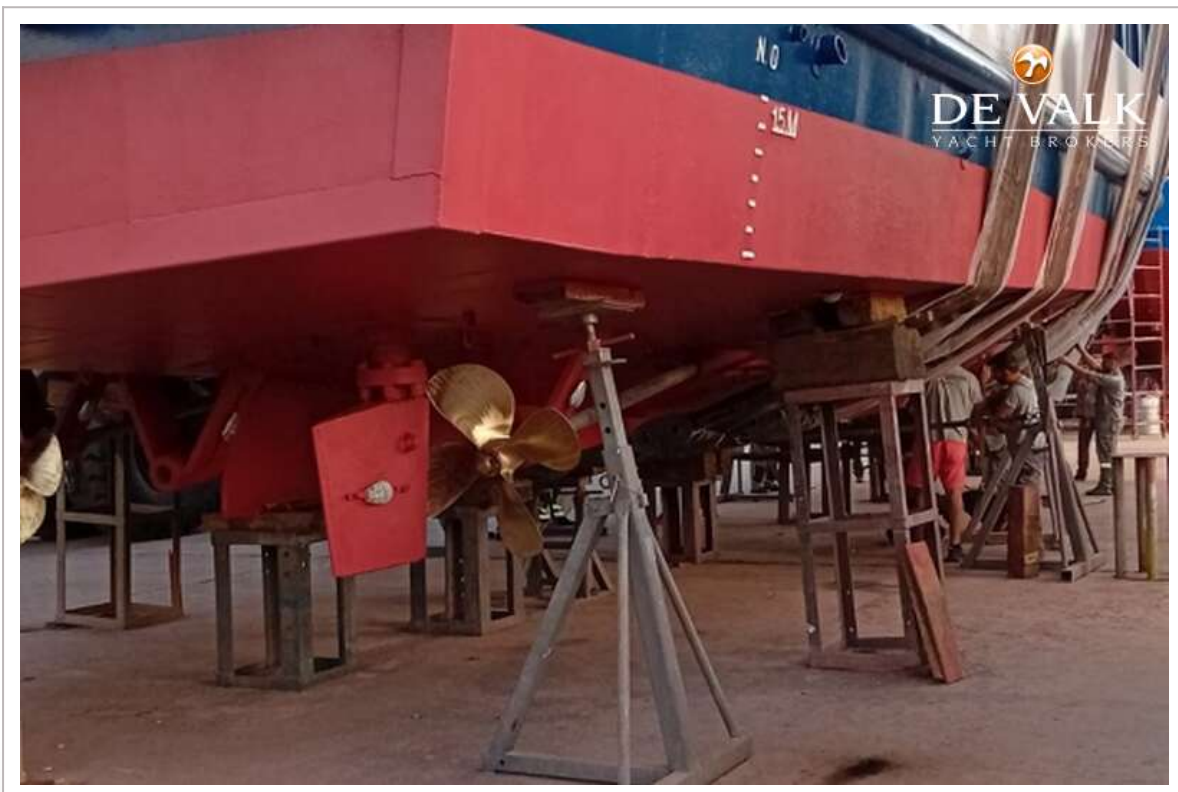
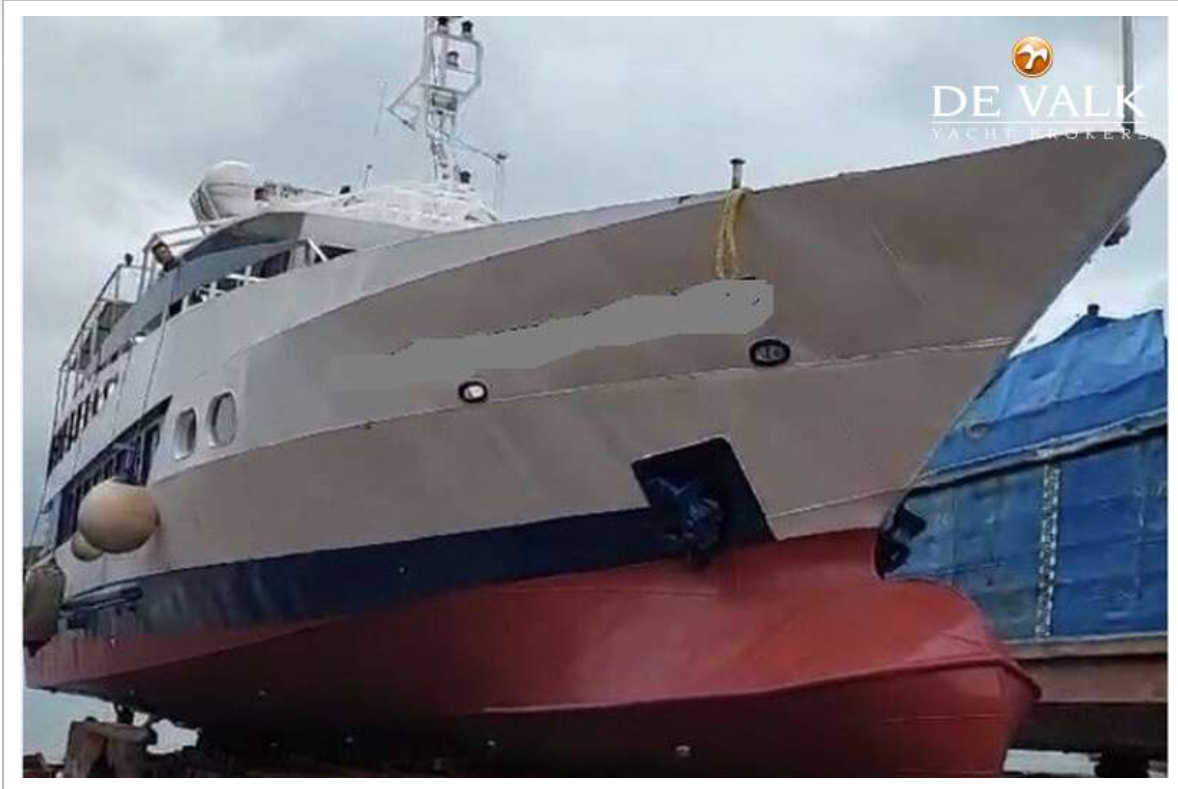
DAY PASSENGERS SHIP 25 M



DAY PASSENGERS SHIP 25 M



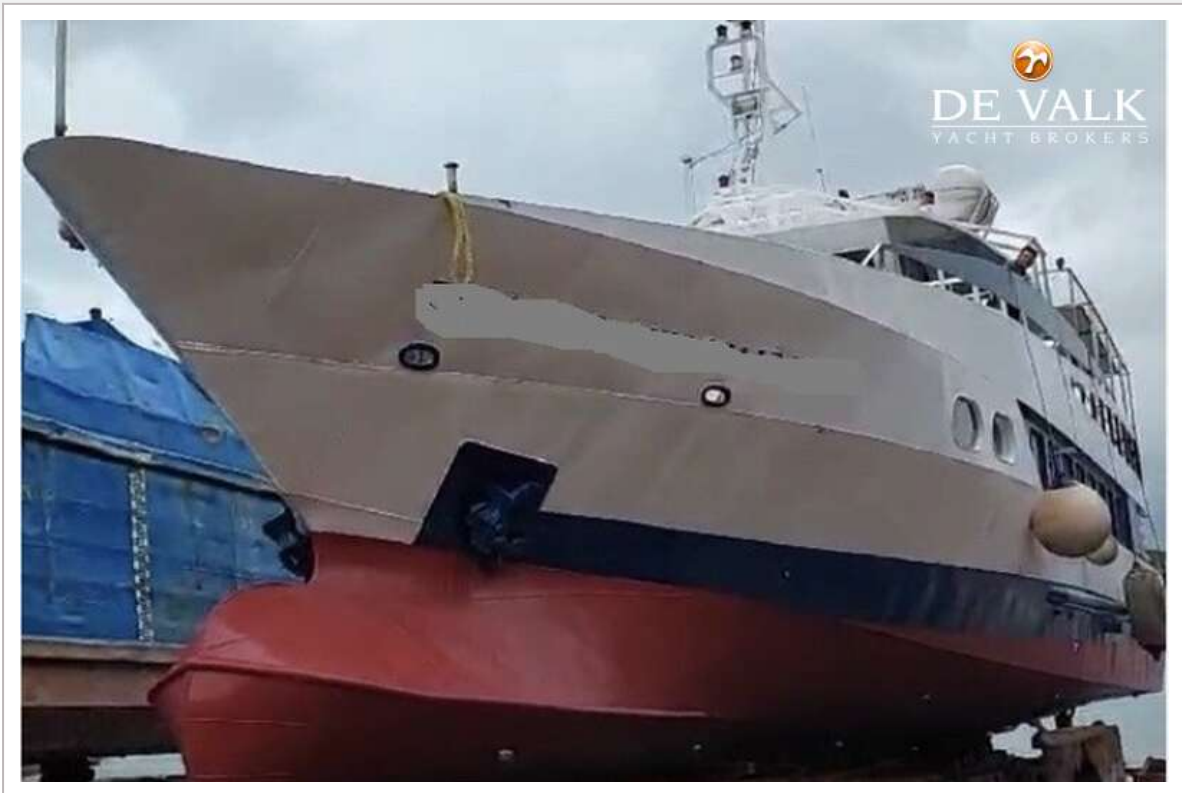
DAY PASSENGERS SHIP 25 M



DAY PASSENGERS SHIP 25 M

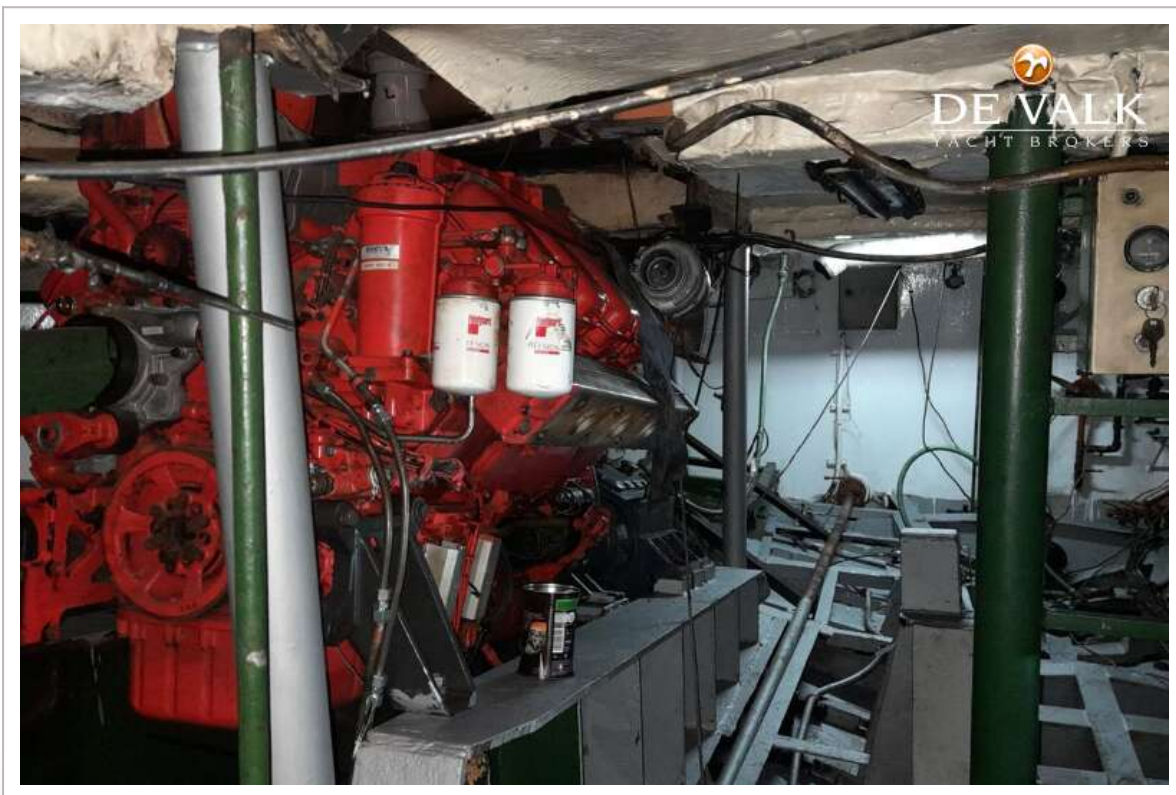
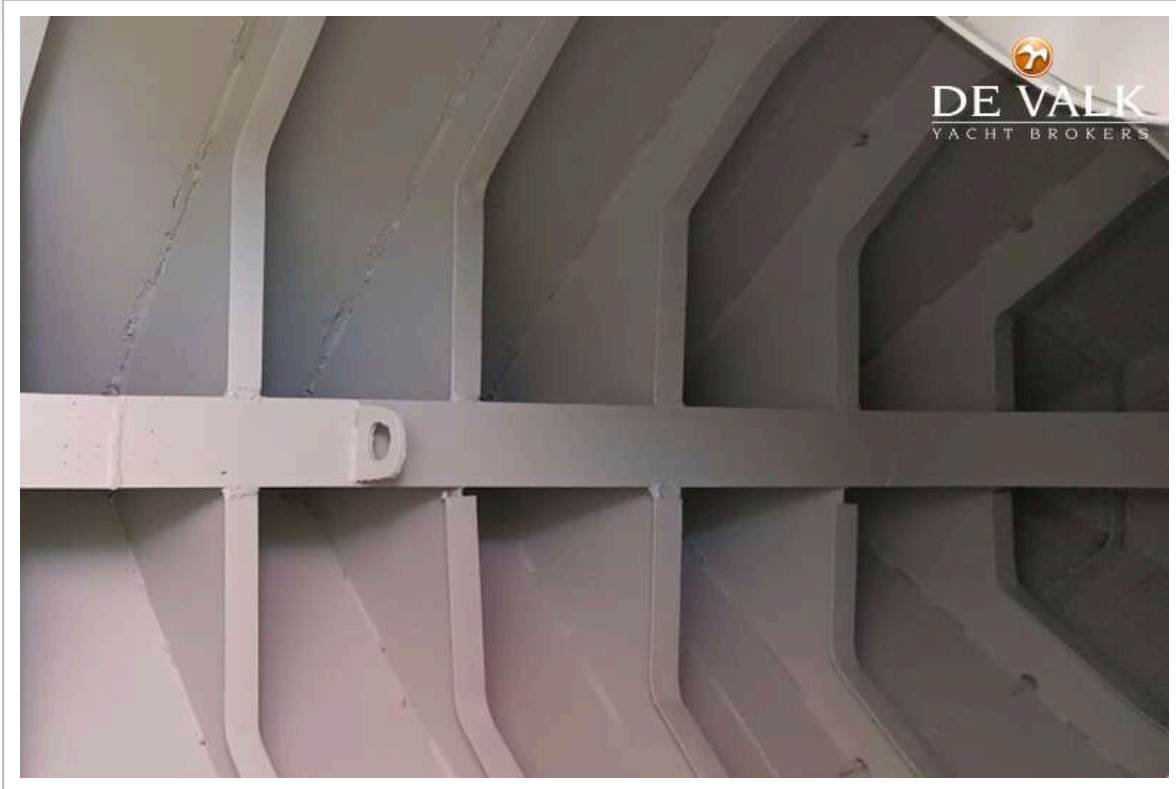


DAY PASSENGERS SHIP 25 M

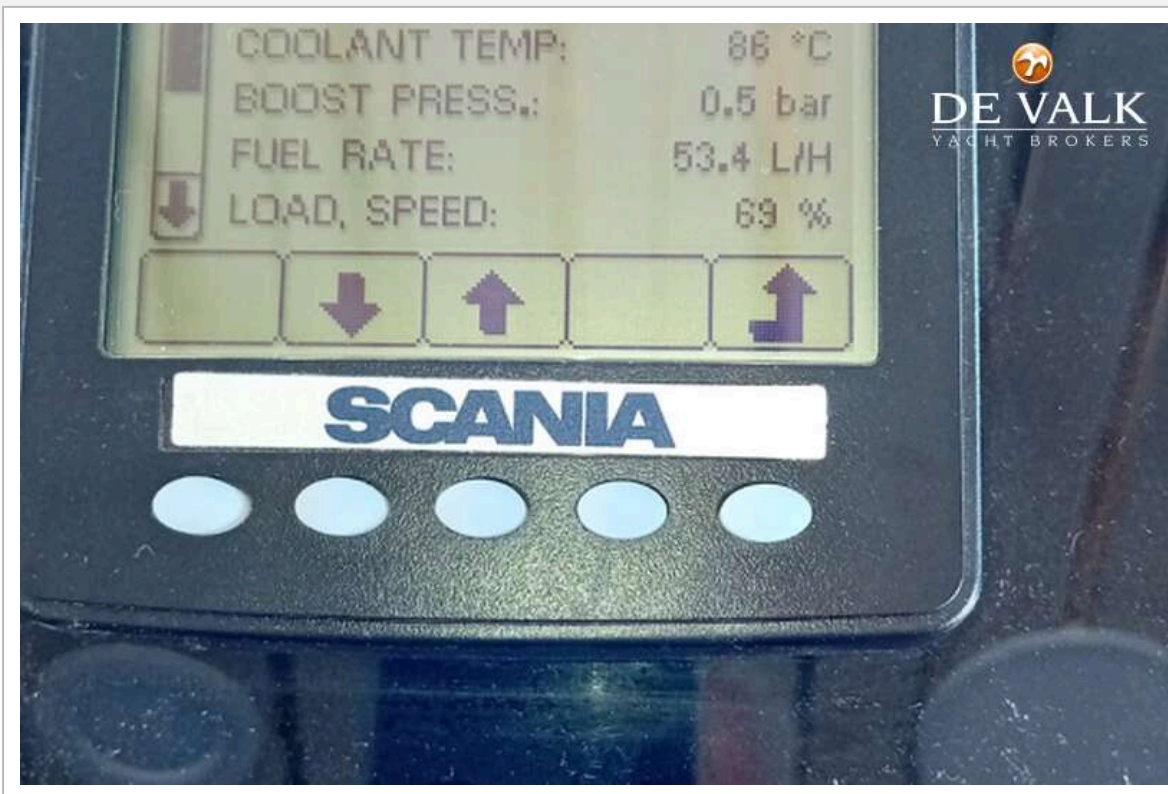


DAY PASSENGERS SHIP 25 M

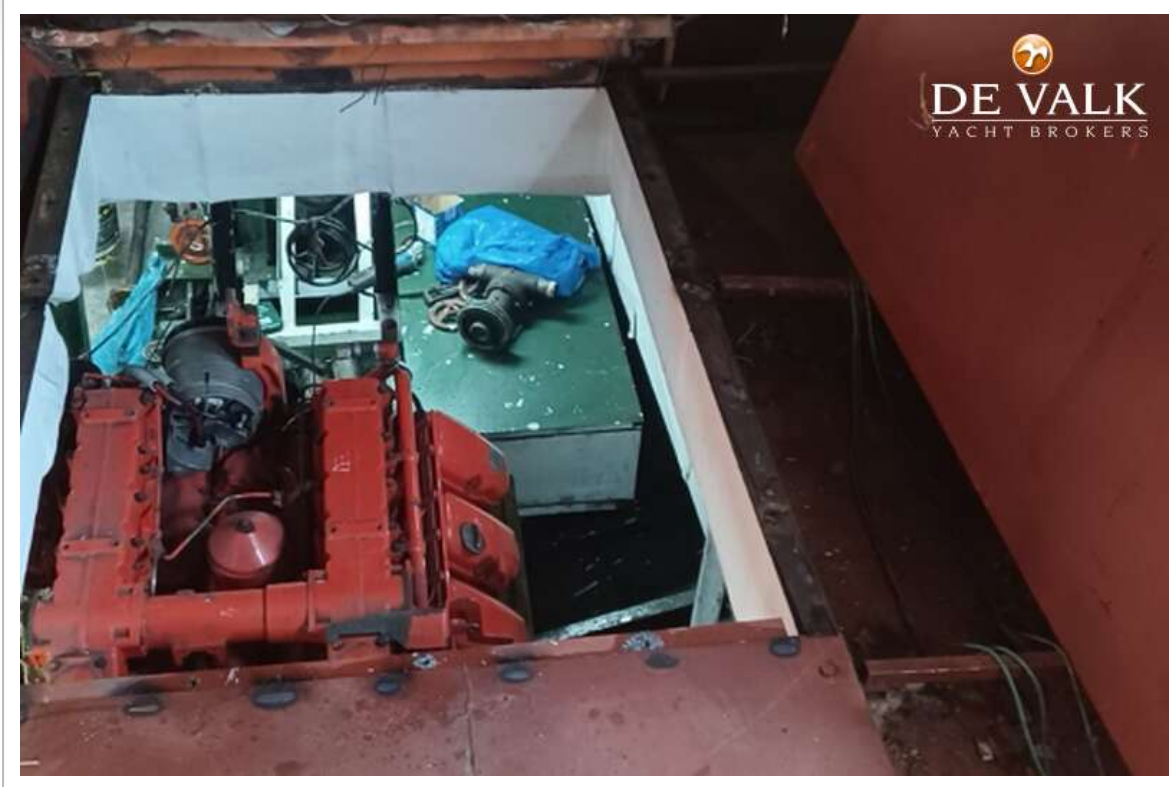




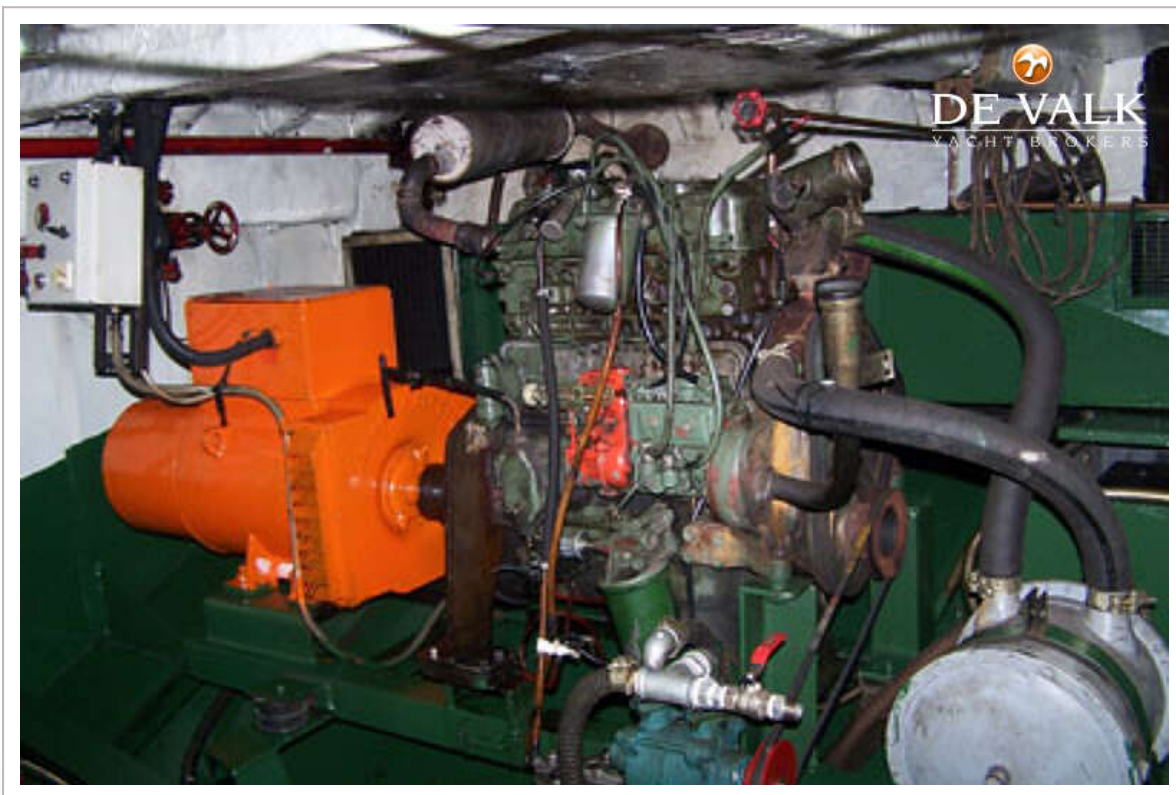
DAY PASSENGERS SHIP 25 M



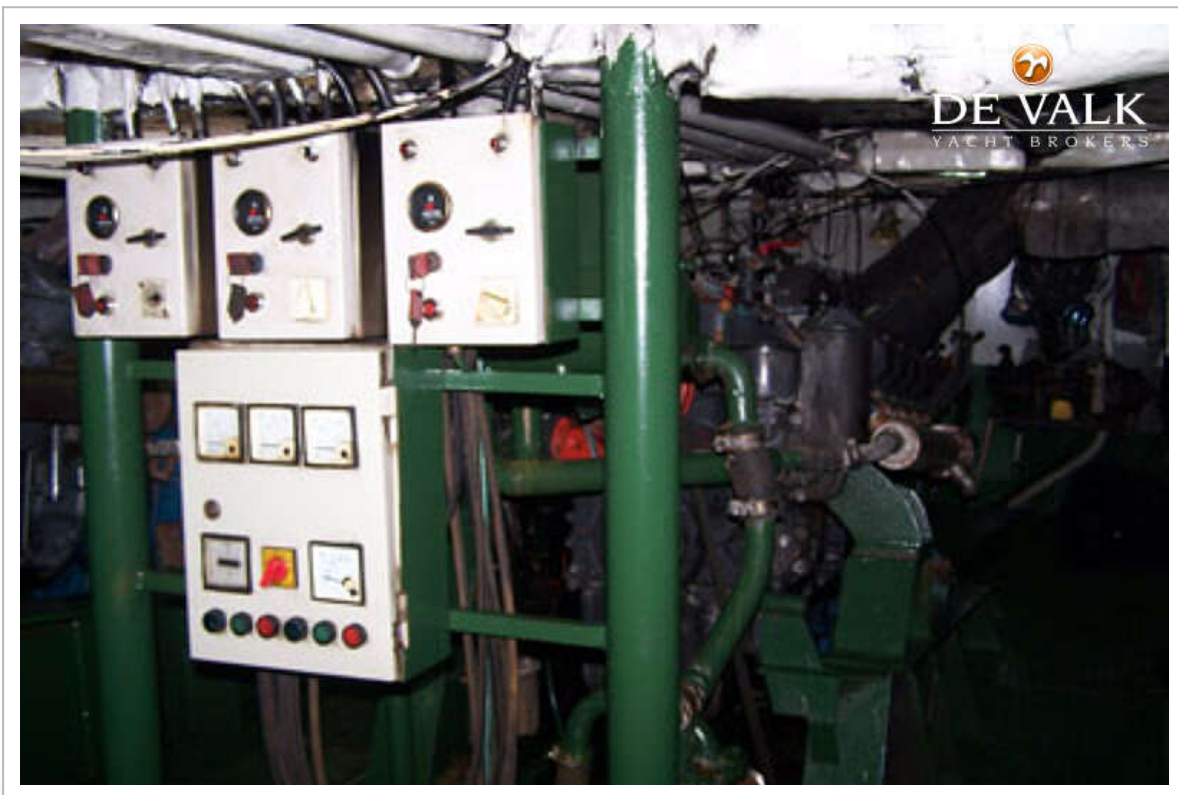
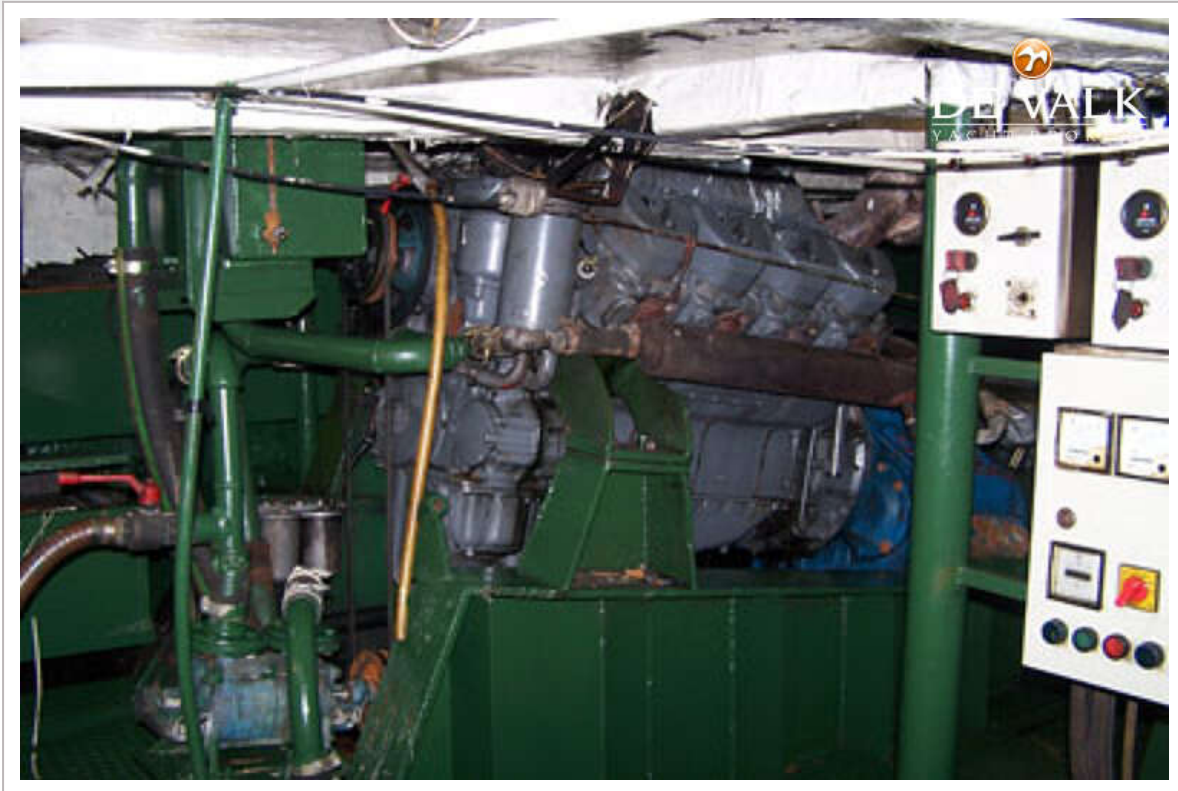
DAY PASSENGERS SHIP 25 M



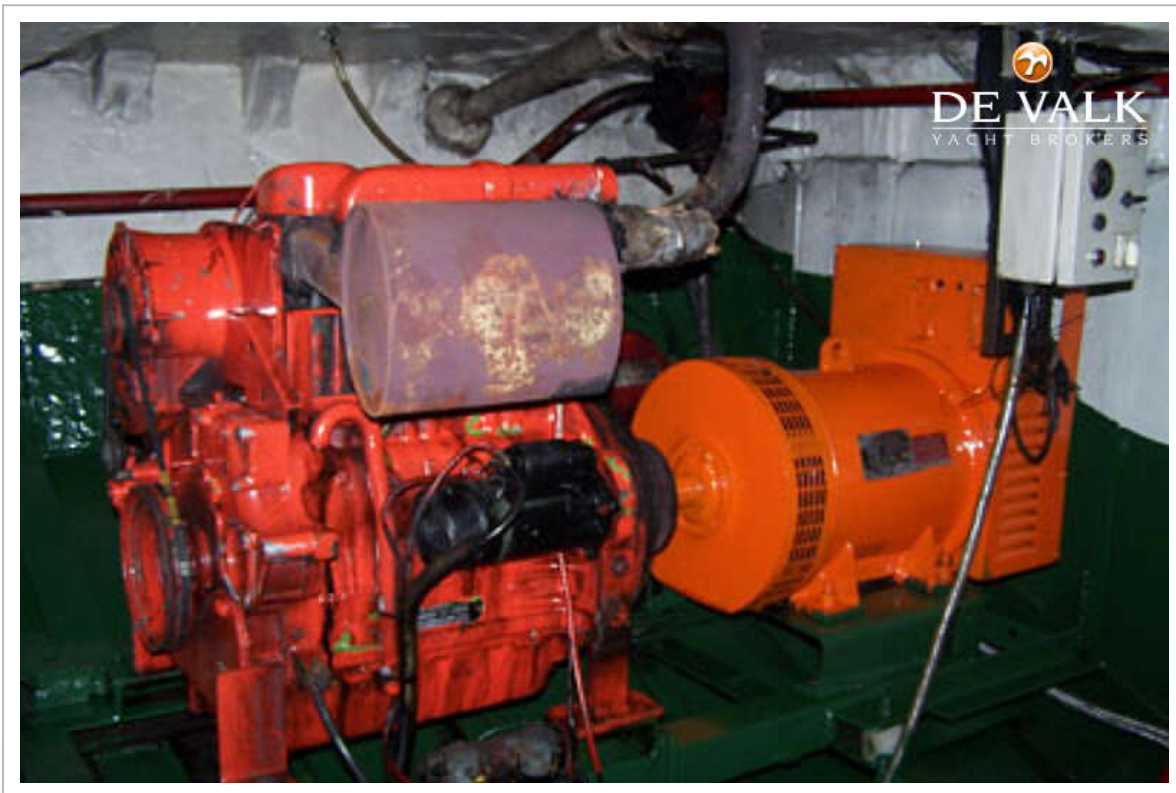
DAY PASSENGERS SHIP 25 M



DAY PASSENGERS SHIP 25 M



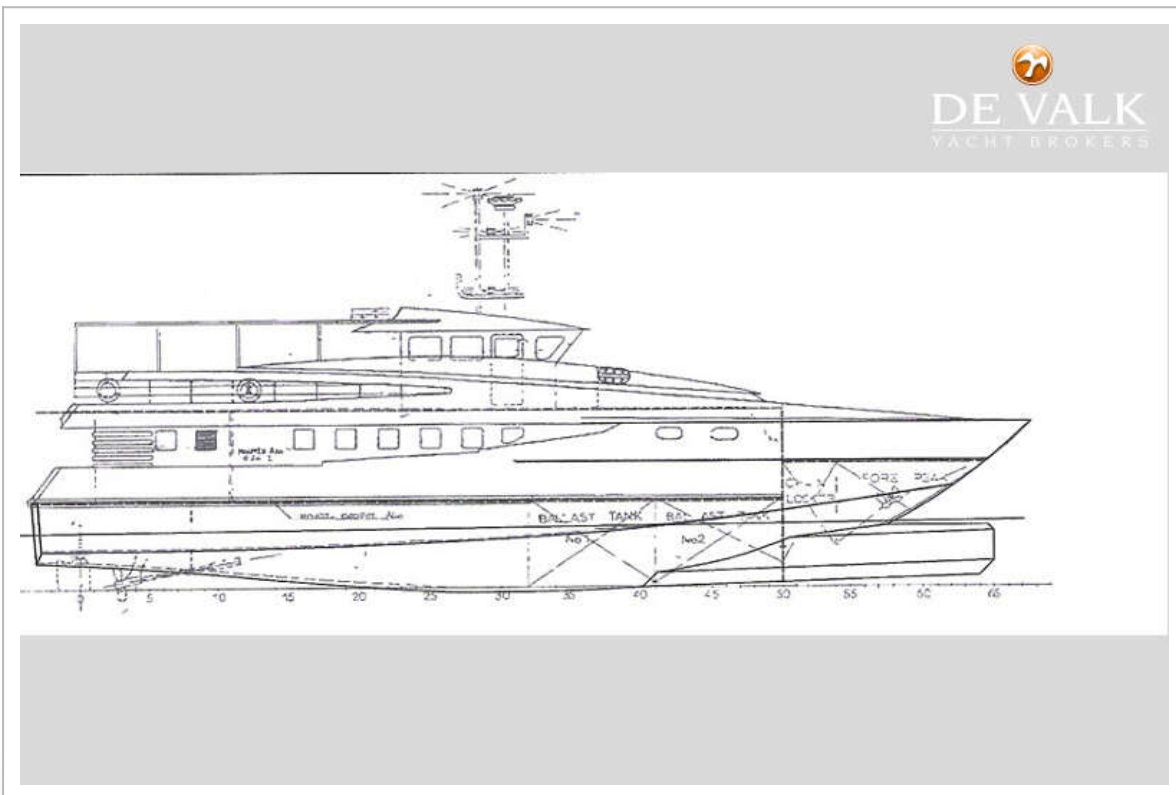
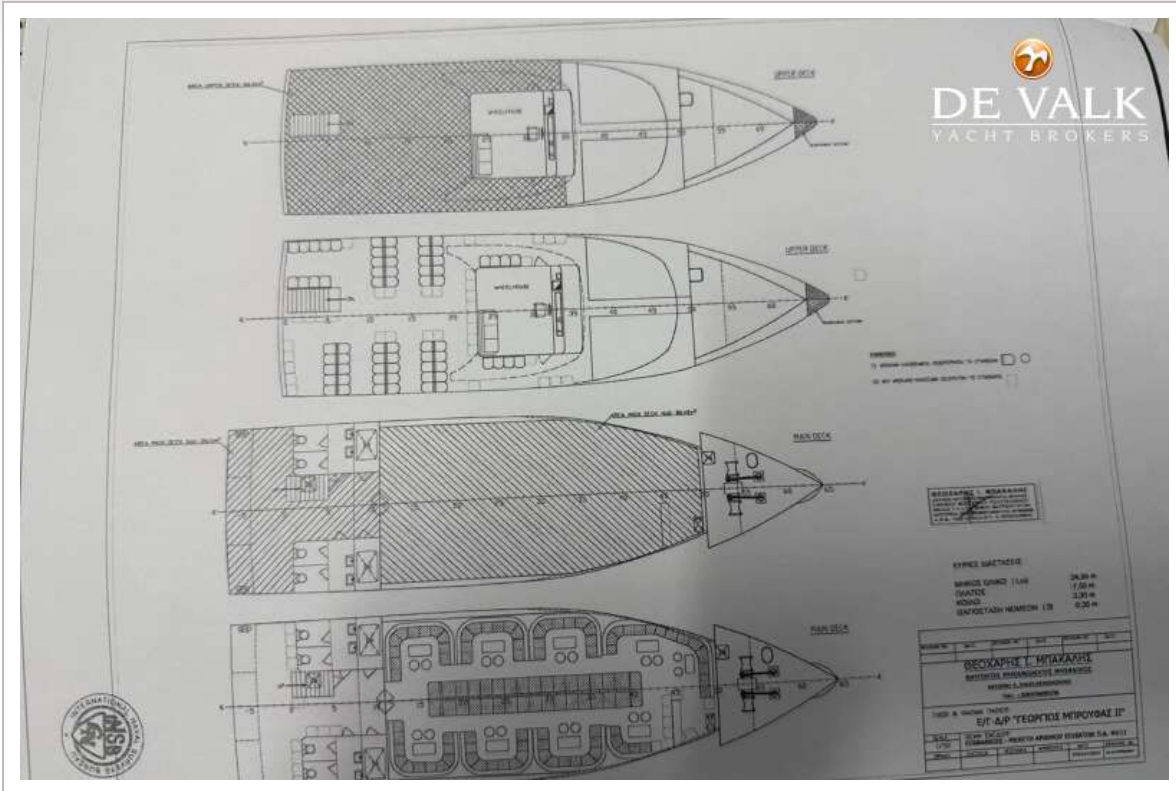
DAY PASSENGERS SHIP 25 M



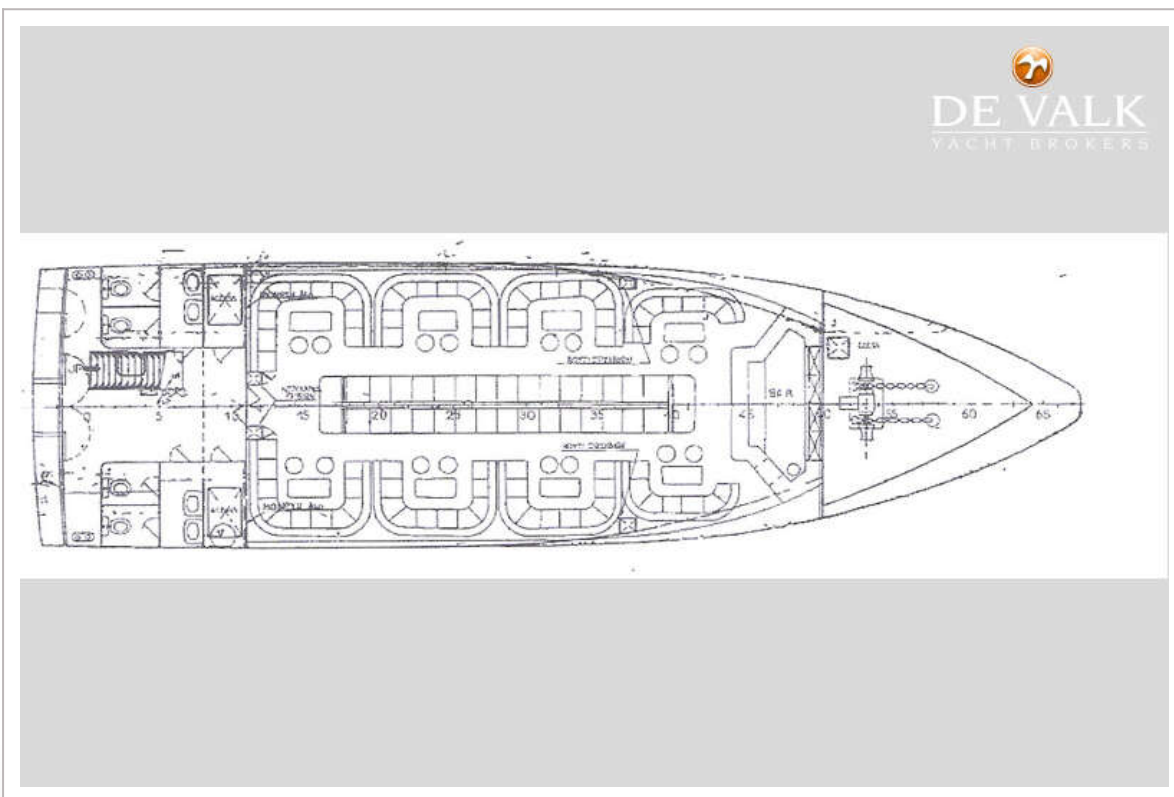
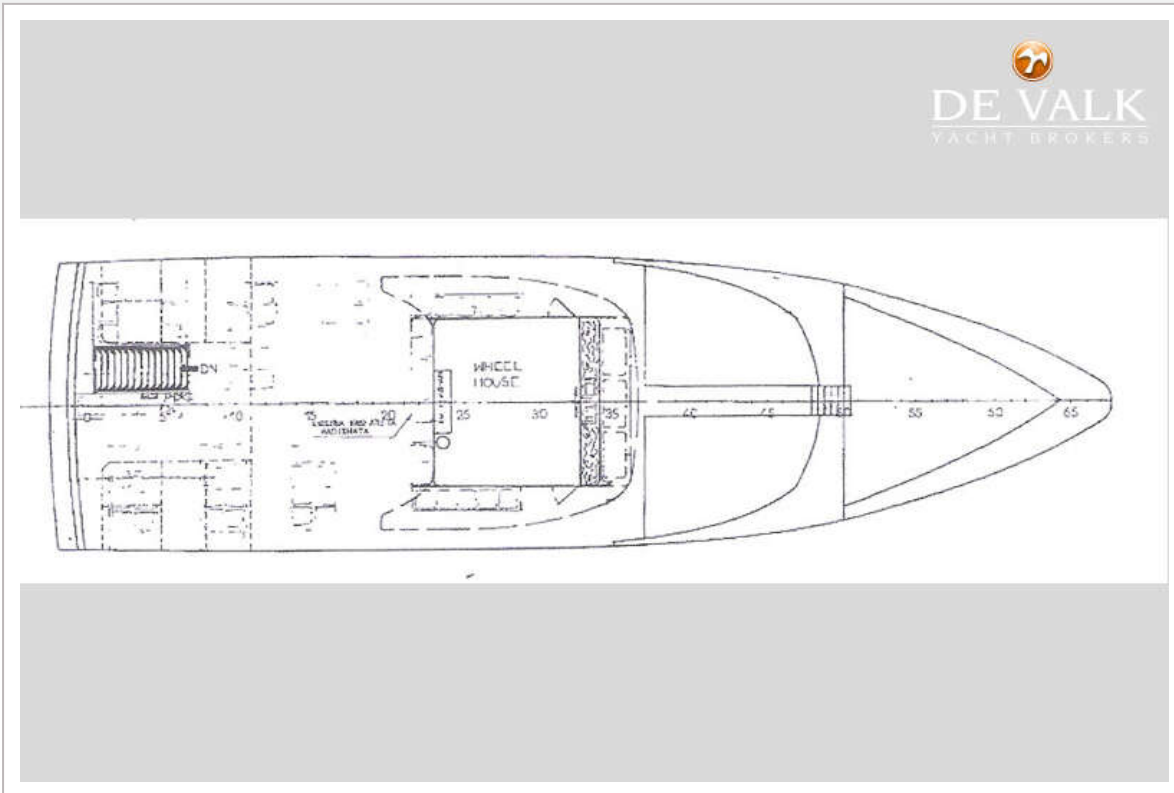
DAY PASSENGERS SHIP 25 M



DAY PASSENGERS SHIP 25 M



DAY PASSENGERS SHIP 25 M



DAY PASSENGERS SHIP 25 M



DE VALK
YACHT BROKERS

