



DE VALK
YACHT BROKERS



RO/RO PAX DOUBLE ENDED FERRY 90



DE VALK
YACHT BROKERS

RO/RO PAX DOUBLE ENDED FERRY 90

VAN DE MAKELAAR

RO/RO PAX Double Ended Ferry 90 m constructed in 2021. Capacity: 187 Cars, 500 Passengers. 2 A.B.C, engines 4 Generators (3 Baudouin, 1 Onan).100 Nm limited allowed voyage according to Certificate of sea worthiness issued by the Republic of Turkey.

Sofia Iliia-Salvanou

SPECIFICATIES

Afmetingen	89.50 x 22.00 x 5.00 (m)	Bouwer	YALOVA TURKOGLU SHIPYARD
Bouwjaar	2021	Hutten	
Materiaal	Staal	Slaapplaatsen	
Motor(en)	2 x A.B.C. 6DZC-1000-166-A diesel	Pk/Kw	2 x 1,803.00 (pk), 1,327.01 (kw)
Vraagprijs	€ 9.300.000 (BTW Niet betaald)	Ligplaats	elders / niet bij verkoopkantoor

CONTACT

Kantoor	De Valk Corfu	Telefoon	(+30) 6948681503
Adres	New Port of Corfu, near Gouvia Marina 490 83 Corfu GR	E-mail	corfu@devalk.nl

DISCLAIMER

Hoewel er uiterste zorg besteed is aan de correctheid, volledigheid en actualiteit van onze informatie kunnen hieraan geen rechten worden ontleend.



RO/RO PAX DOUBLE ENDED FERRY 90

ALGEMEEN

Model	RO/RO PAX DOUBLE ENDED FERRY 90
Type	motorjacht
Lengte (m)	89,50
Breedte (m)	22,00
Diepgang (m)	5,00
Bouwjaar	2021
Gebouwd door	YALOVA TURKOGLU SHIPYARD
Land	Turkije
Ontwerper	EDREK MARINE MOTOR CARRIERS COOPERATIVE
Bruto tonnage	1998
Netto tonnage	599
Romp materiaal	staal
Romp kleur	rood
Antifouling (jaar)	2025
Brandstoftank 2 (liter)	ja
Drinkwatertank (liter)	ja
Vuilwatertank (liter)	ja
Stuurwiel	ja
Noodhelmstok	ja
Extra info	CLASS: TURKISH LLOYDS (IACS)
Extra info	Construction lasted 17 months & costed 60.000.000 Turk Liras

MOTOR(EN)

Aantal motoren	2
Merk	A.B.C.
Type	6DZC-1000-166-A
Pk	1803
kW	1327.01
Brandstof	diesel
Maximale snelheid (kn)	14

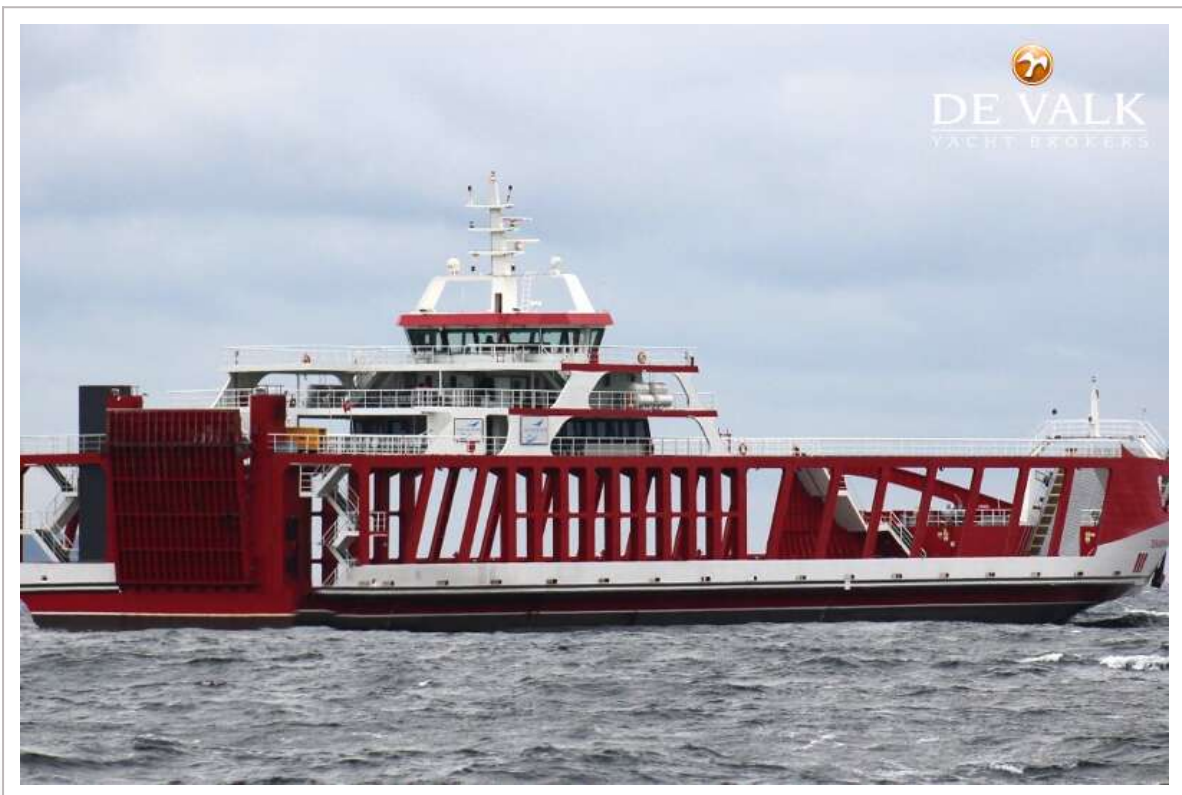


RO/RO PAX DOUBLE ENDED FERRY 90

Kruissnelheid (kn)	11
Verbruik (ltr/uur)	300
Aandrijving	schroefas
Generator	BAUDOUIN 6W105S X 3
Generator 2	YUCHAI YC6TD800L-C20 X 1



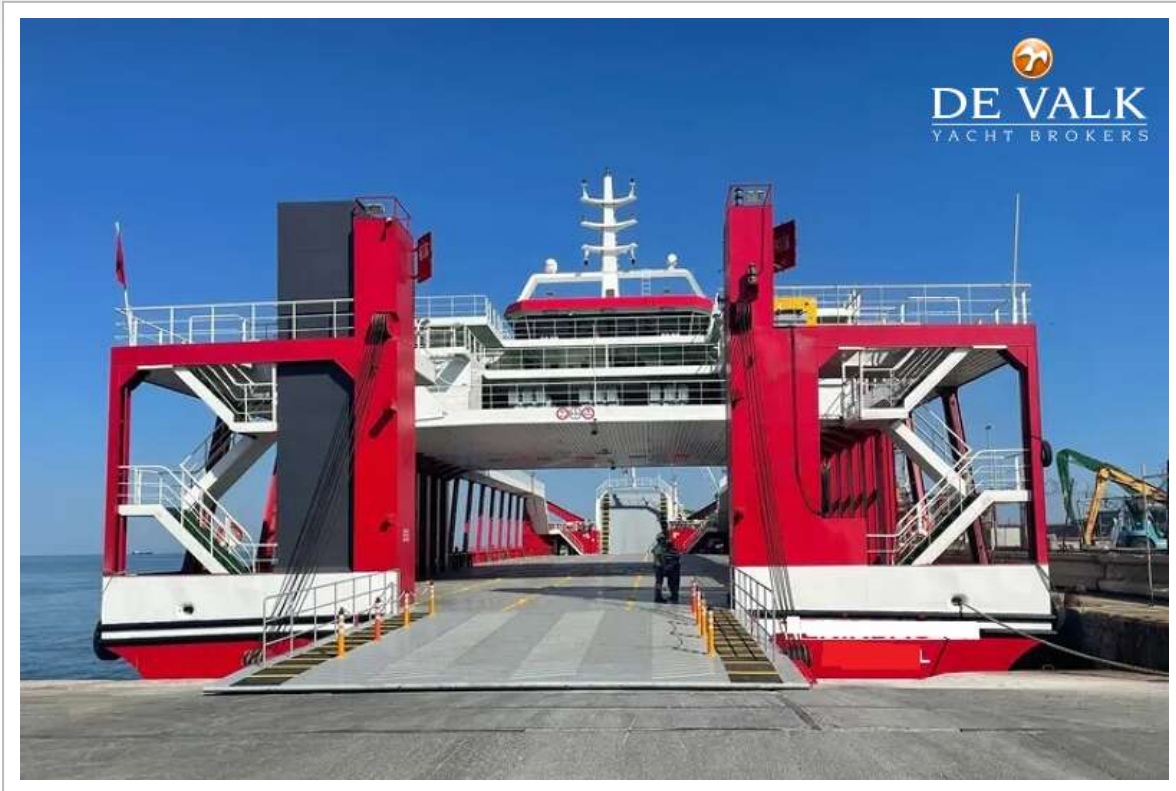
RO/RO PAX DOUBLE ENDED FERRY 90



RO/RO PAX DOUBLE ENDED FERRY 90



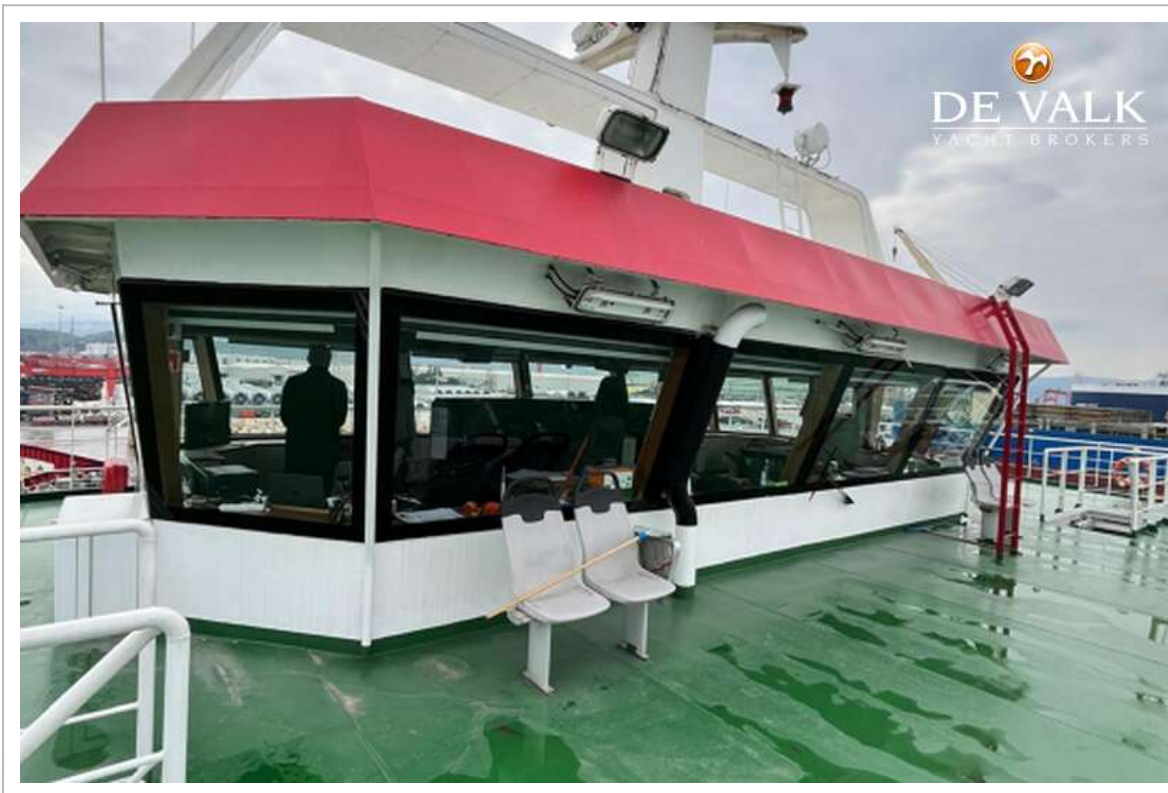
RO/RO PAX DOUBLE ENDED FERRY 90



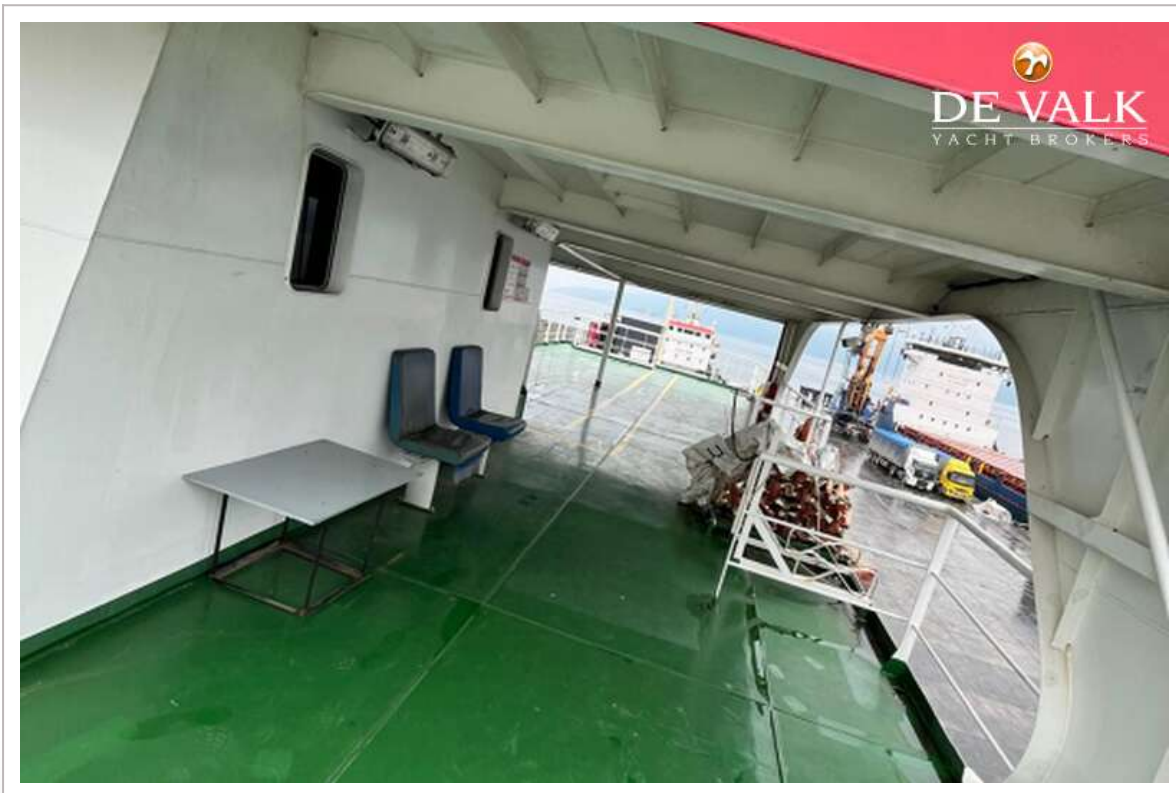
RO/RO PAX DOUBLE ENDED FERRY 90



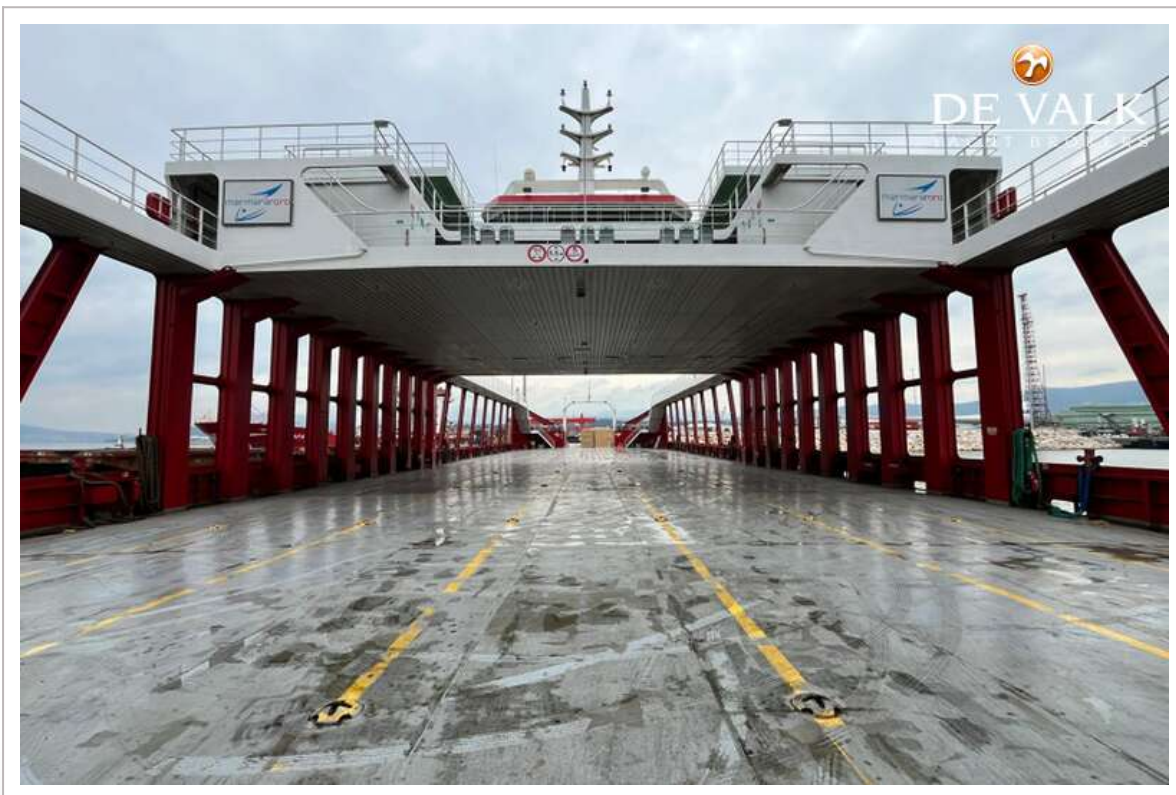
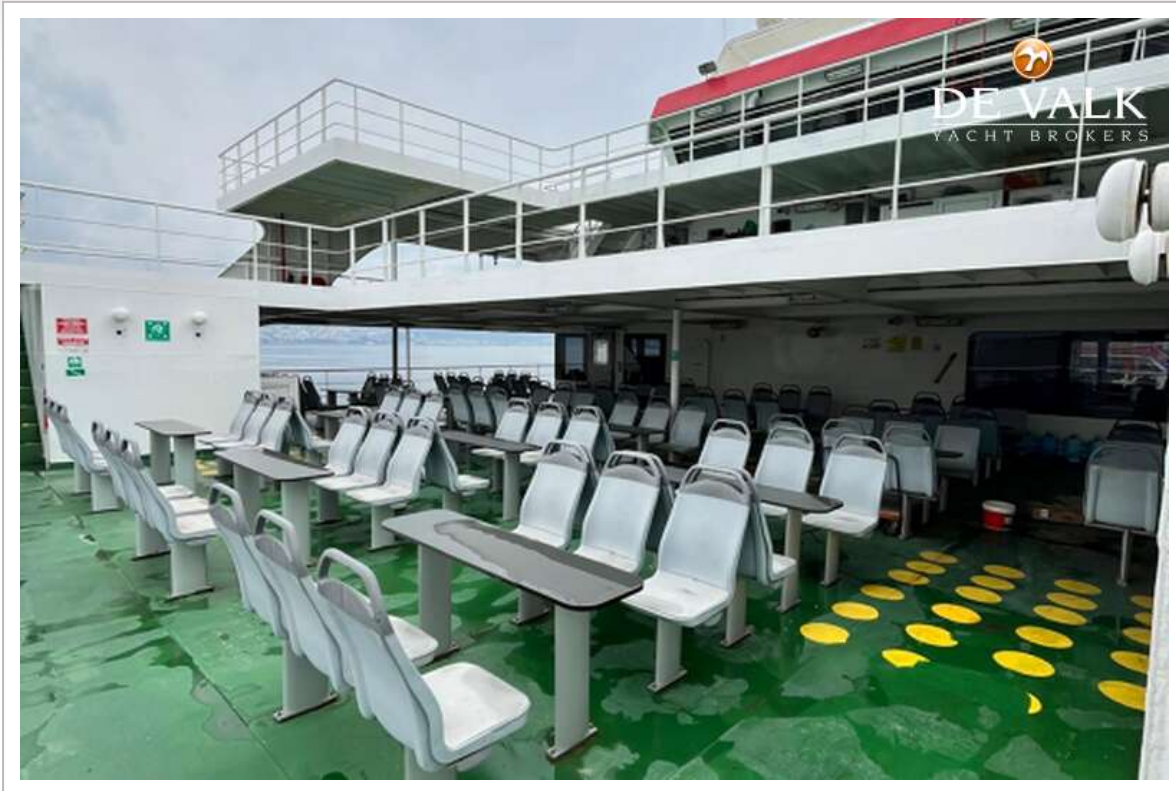
RO/RO PAX DOUBLE ENDED FERRY 90



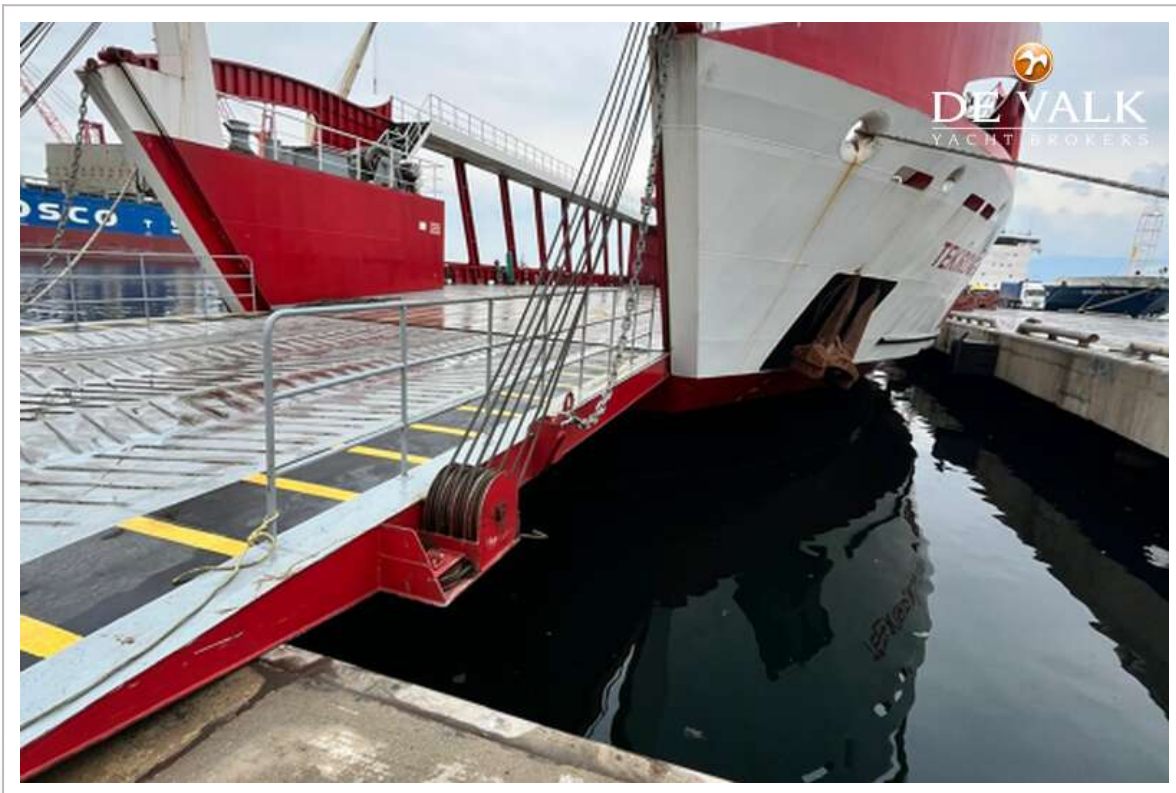
RO/RO PAX DOUBLE ENDED FERRY 90



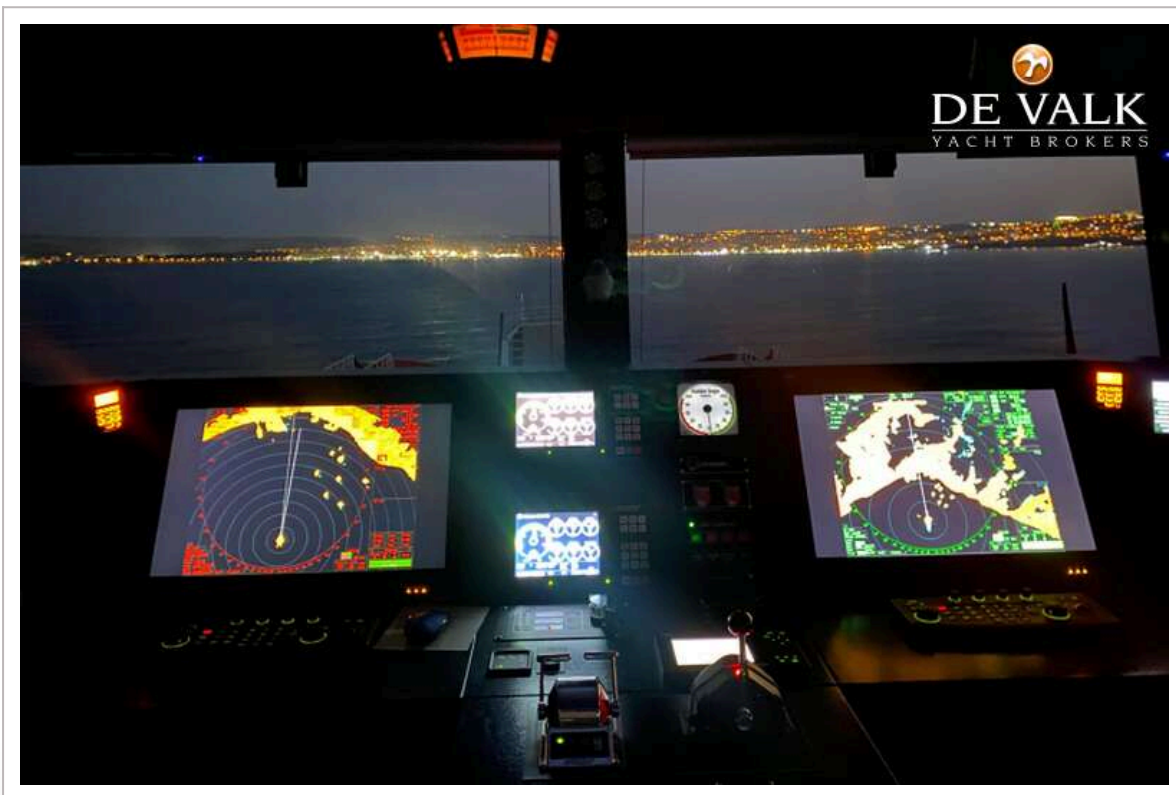
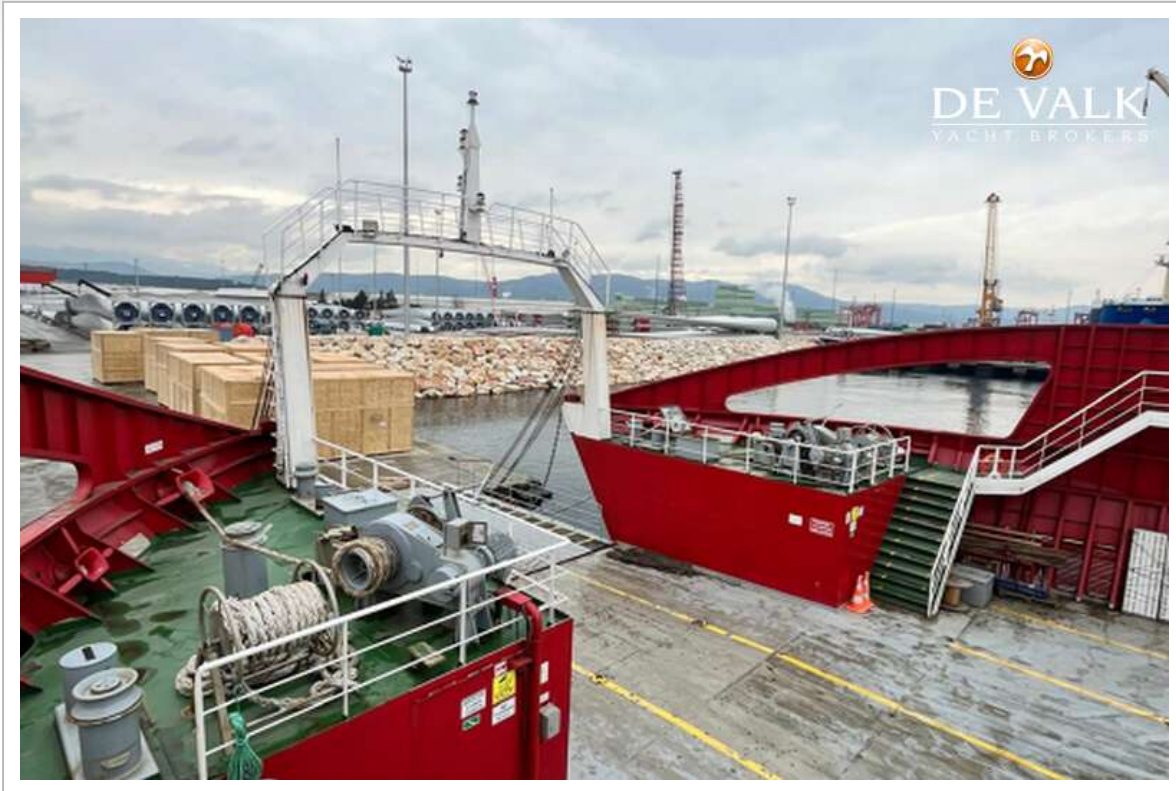
RO/RO PAX DOUBLE ENDED FERRY 90



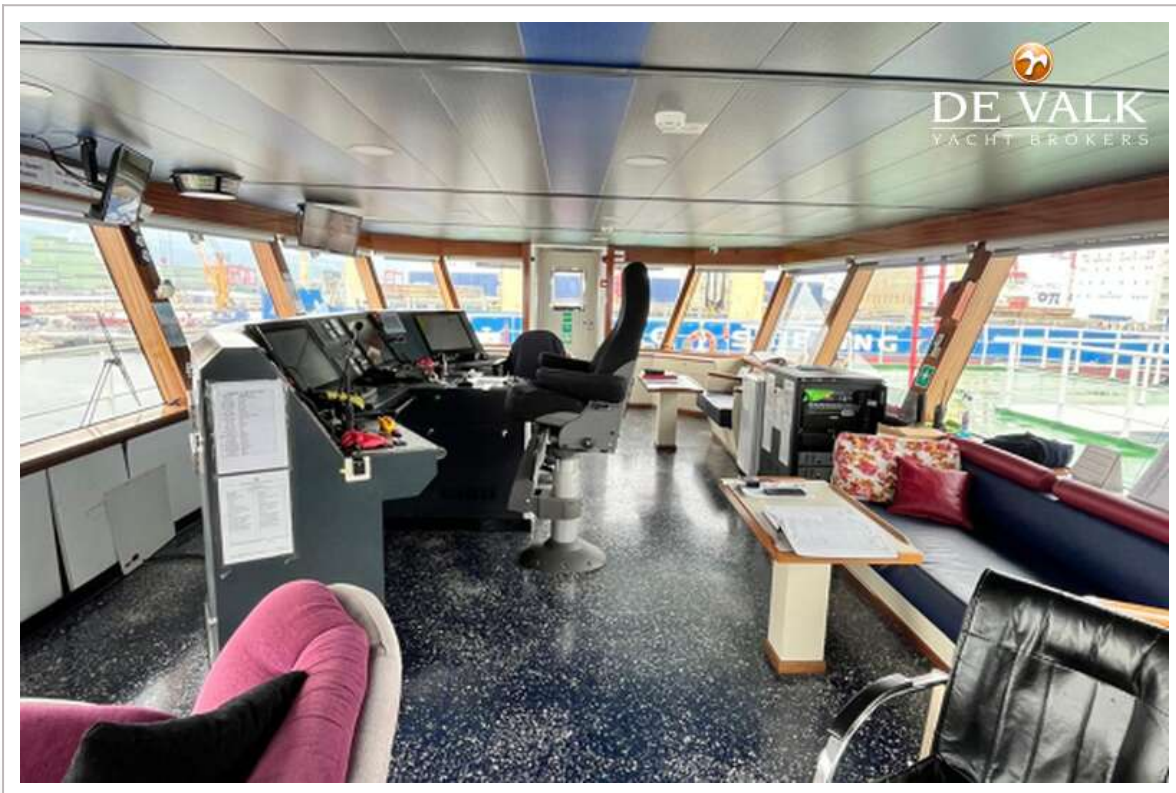
RO/RO PAX DOUBLE ENDED FERRY 90

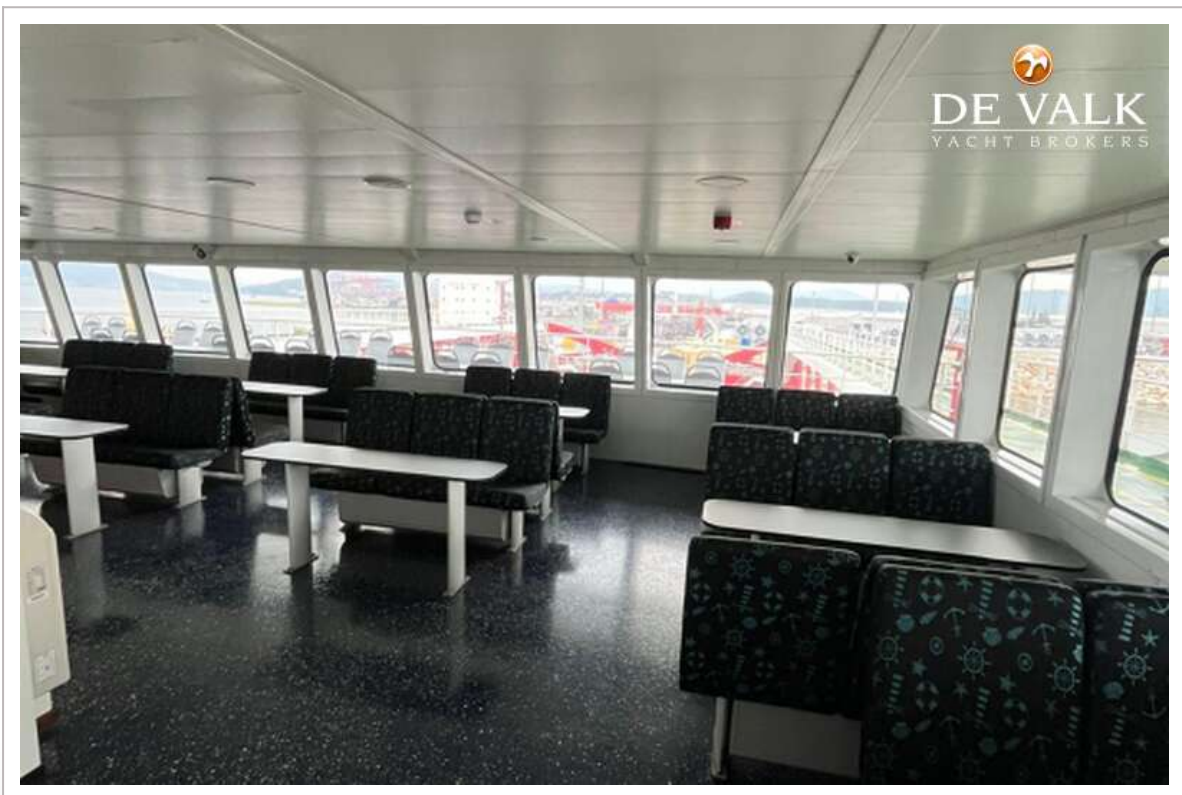


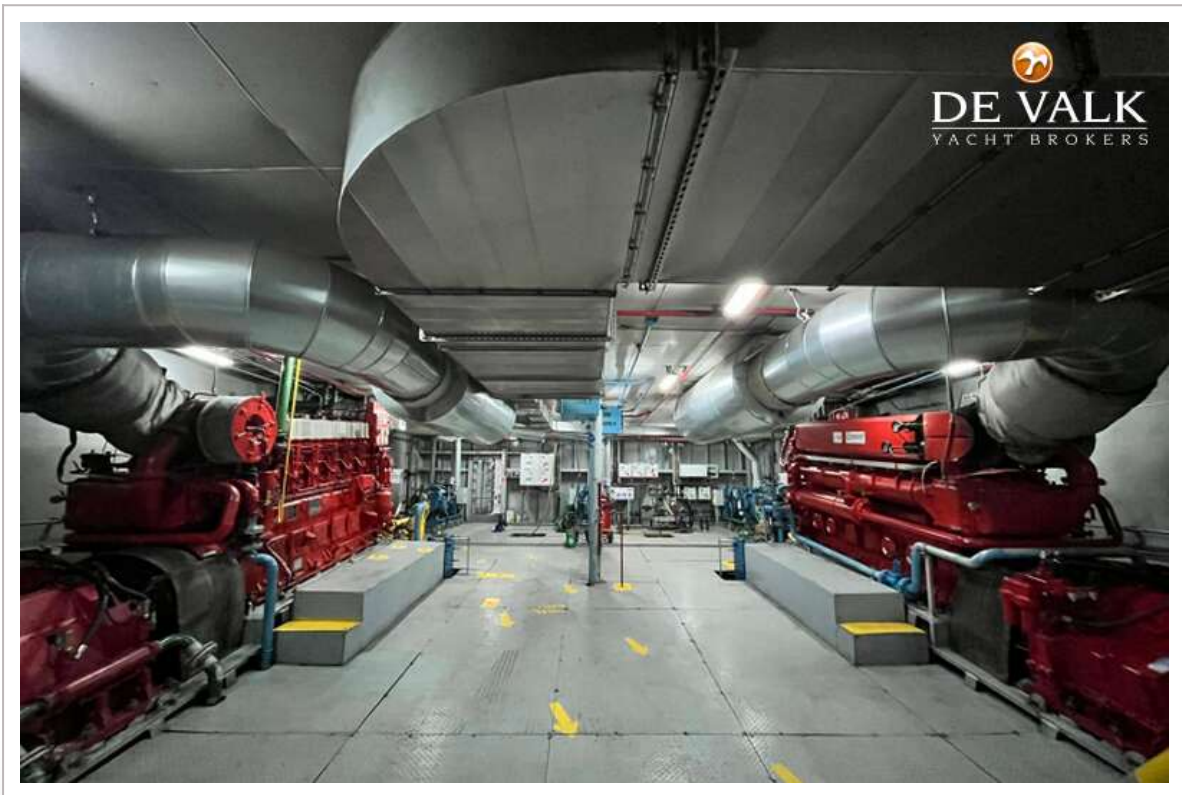
RO/RO PAX DOUBLE ENDED FERRY 90



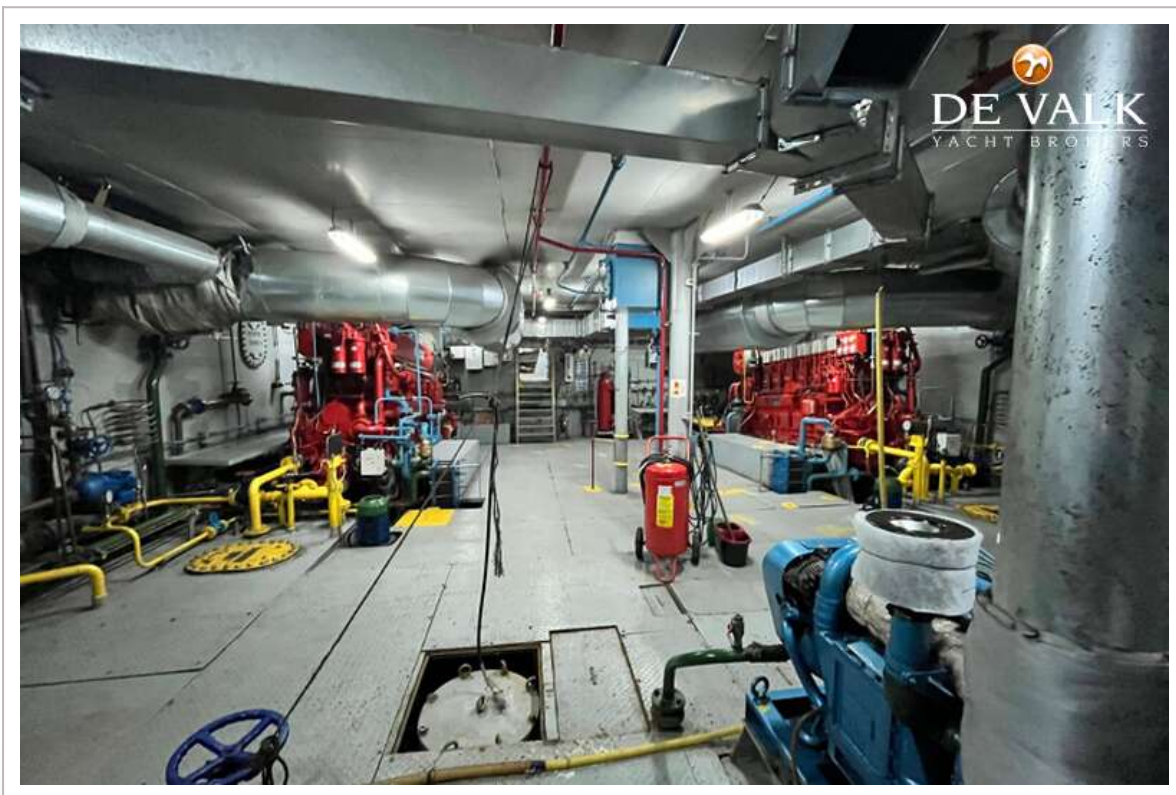
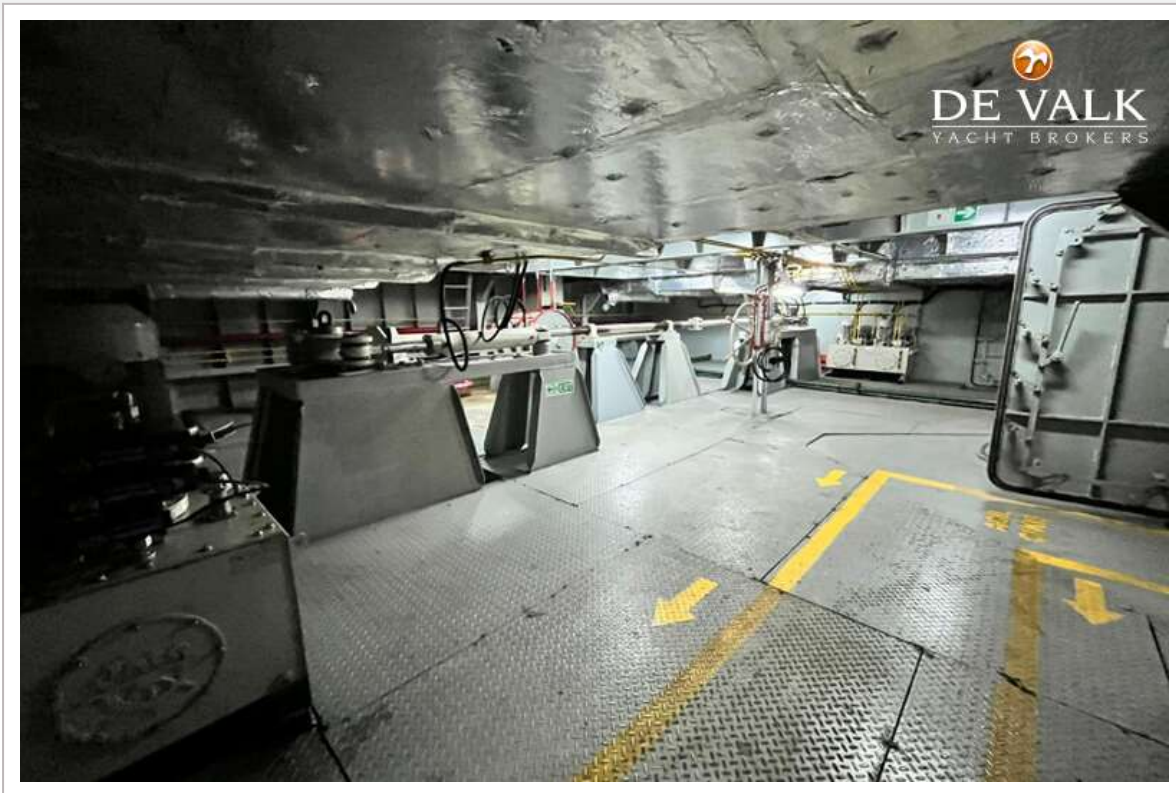
RO/RO PAX DOUBLE ENDED FERRY 90



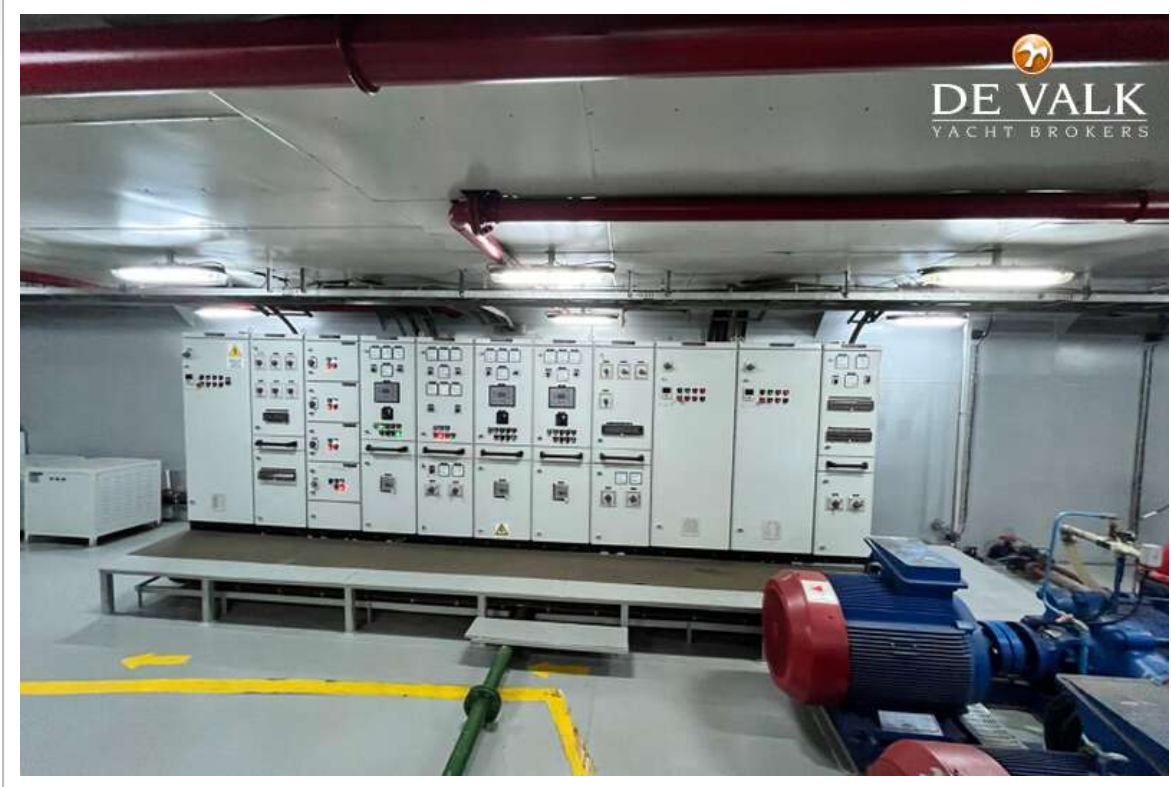




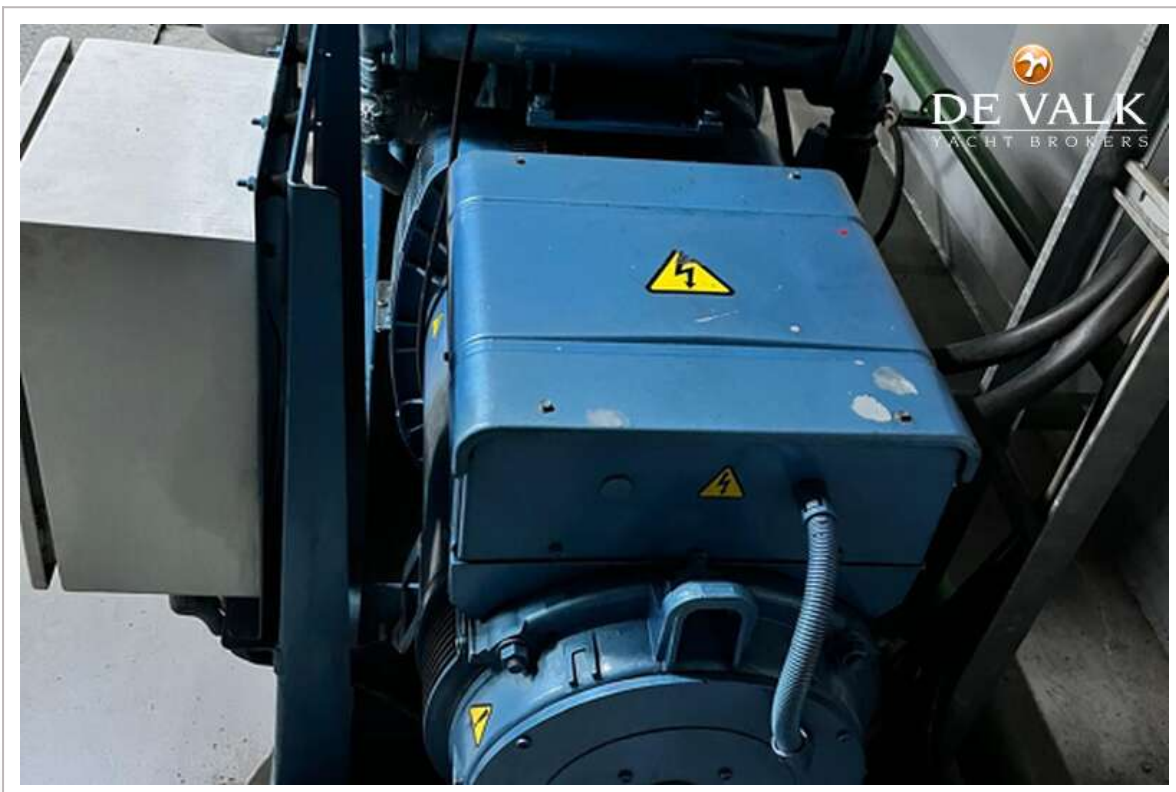
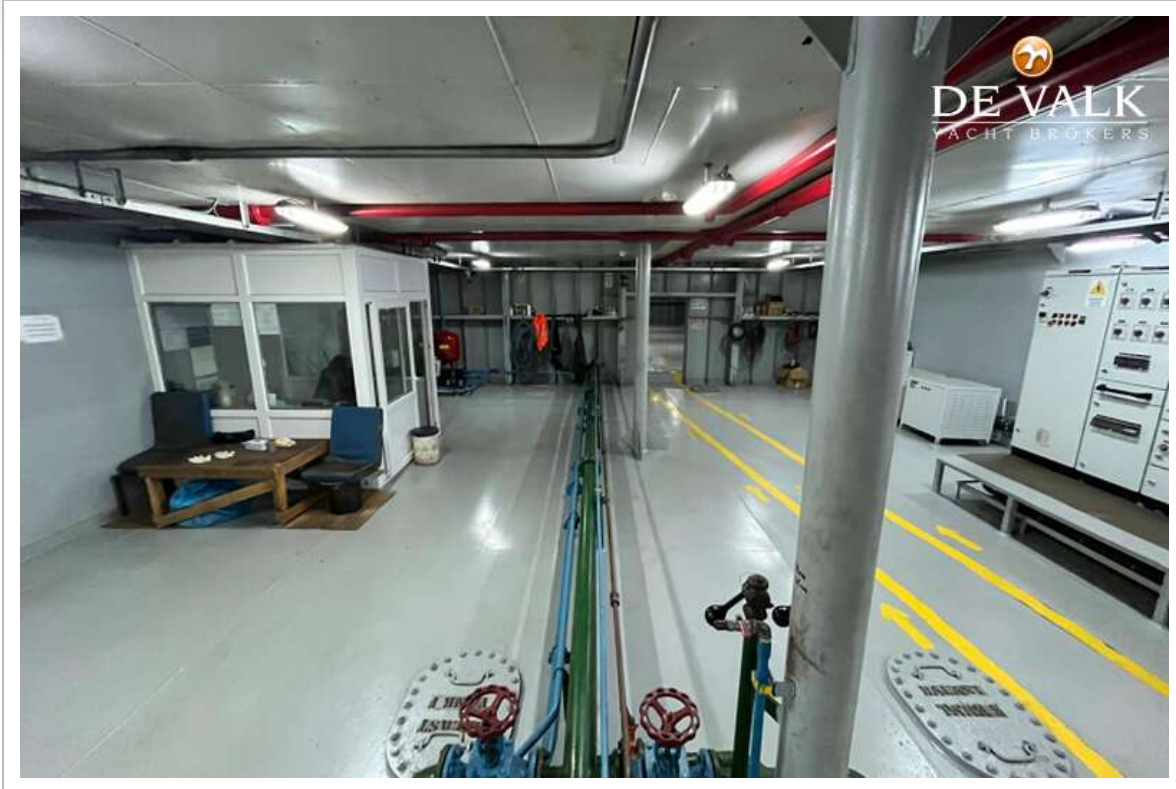
RO/RO PAX DOUBLE ENDED FERRY 90



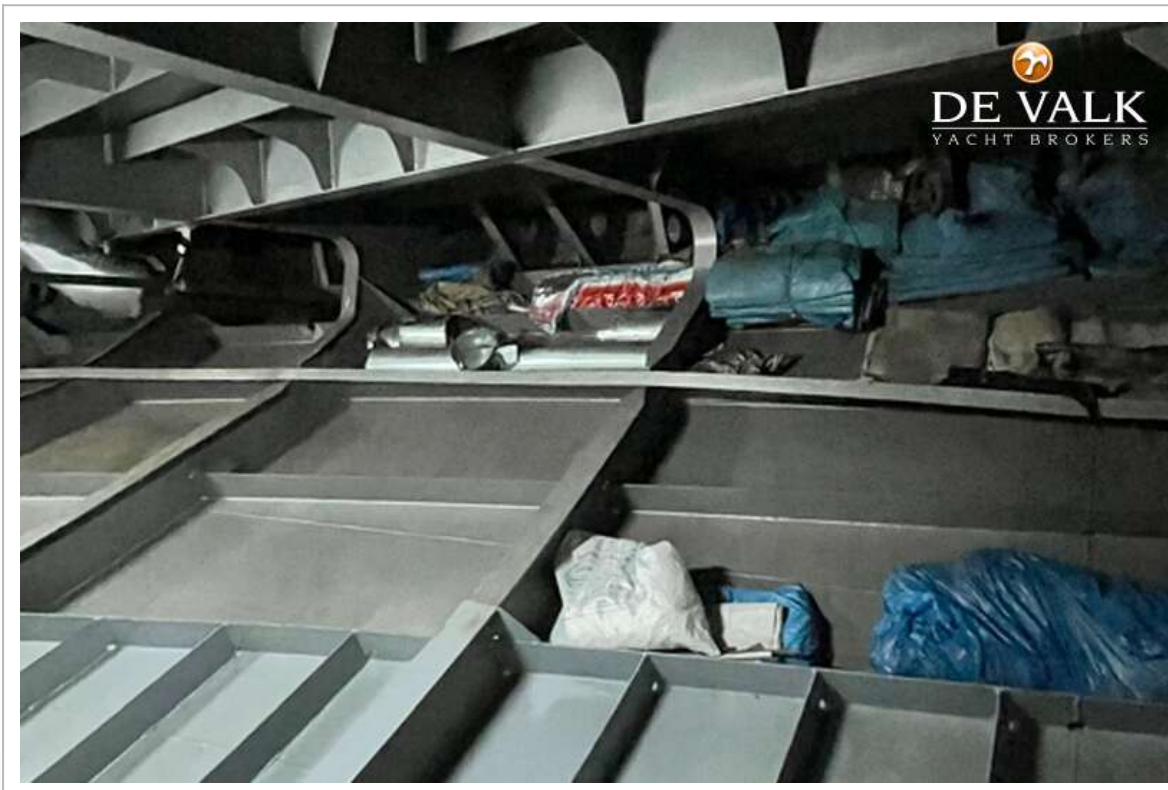
RO/RO PAX DOUBLE ENDED FERRY 90



RO/RO PAX DOUBLE ENDED FERRY 90

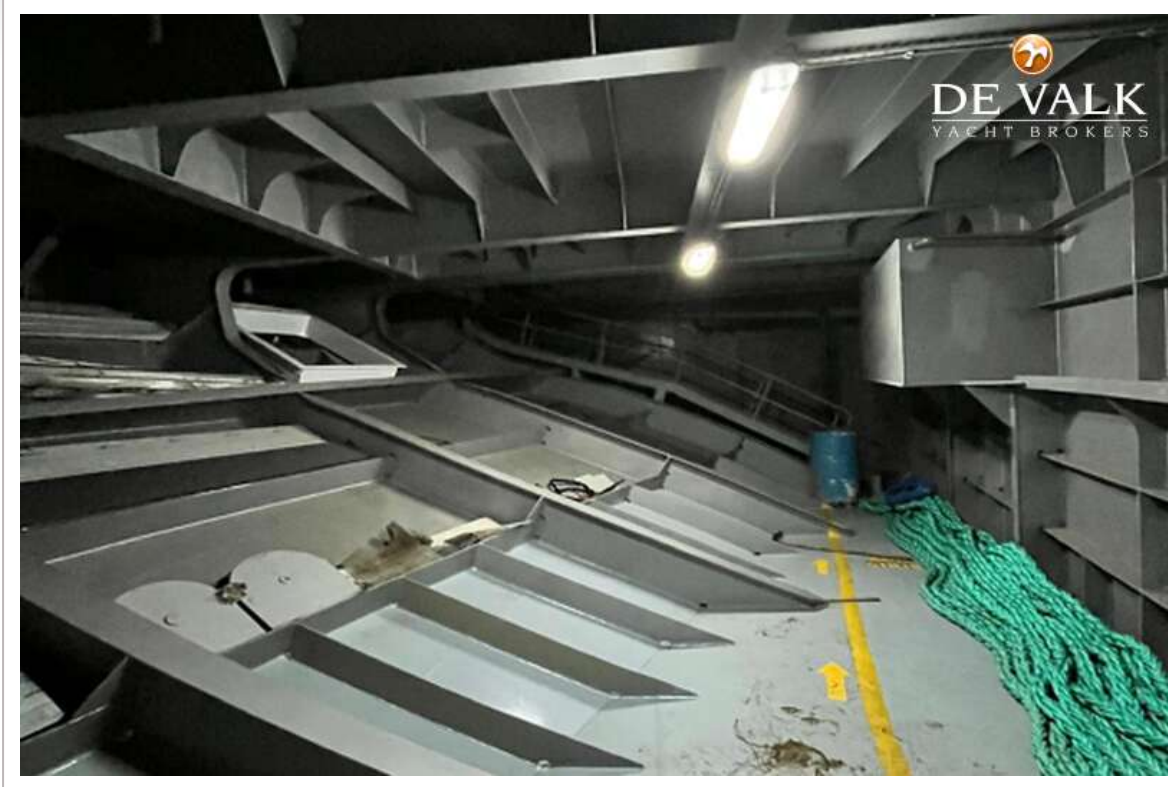


RO/RO PAX DOUBLE ENDED FERRY 90

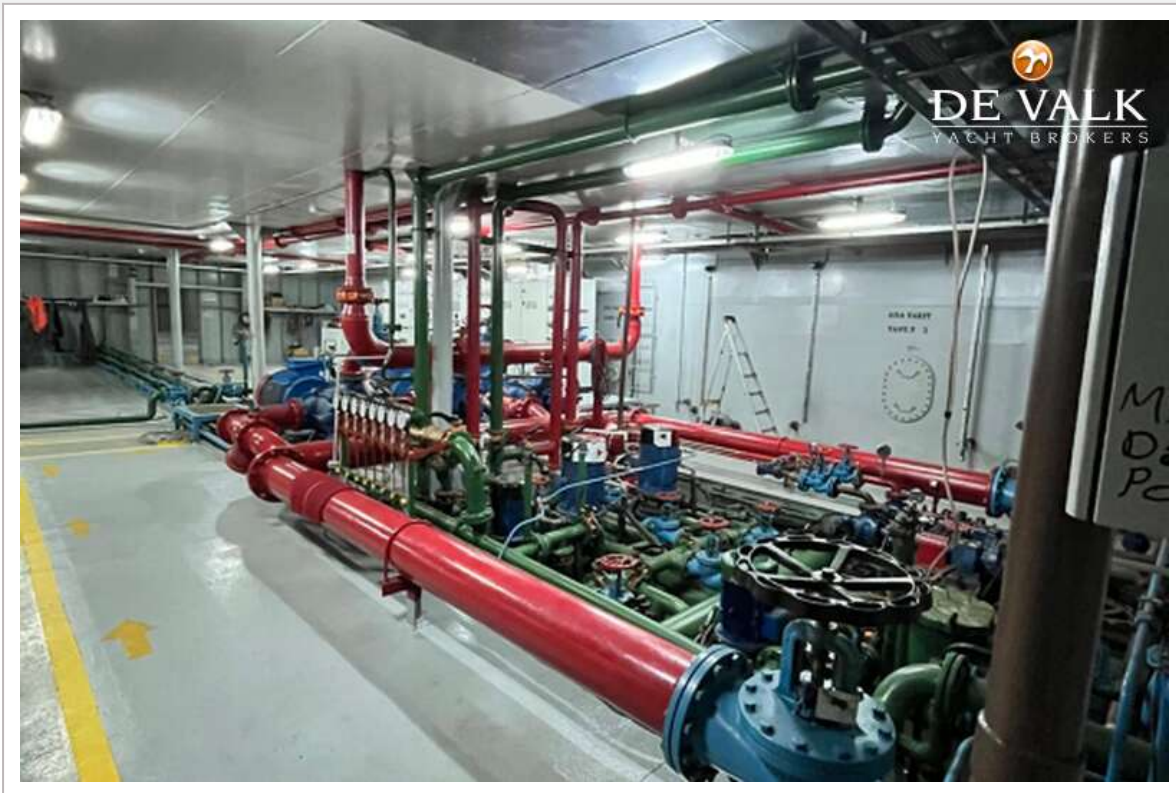




RO/RO PAX DOUBLE ENDED FERRY 90



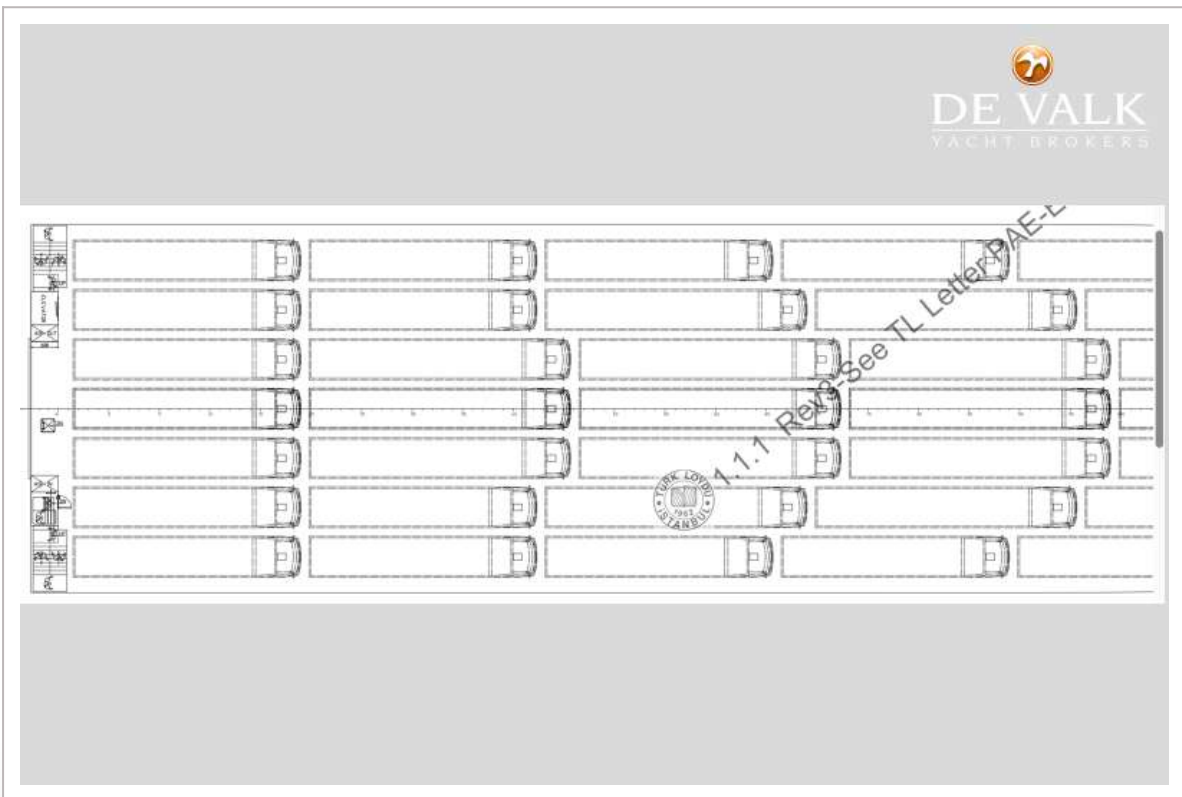
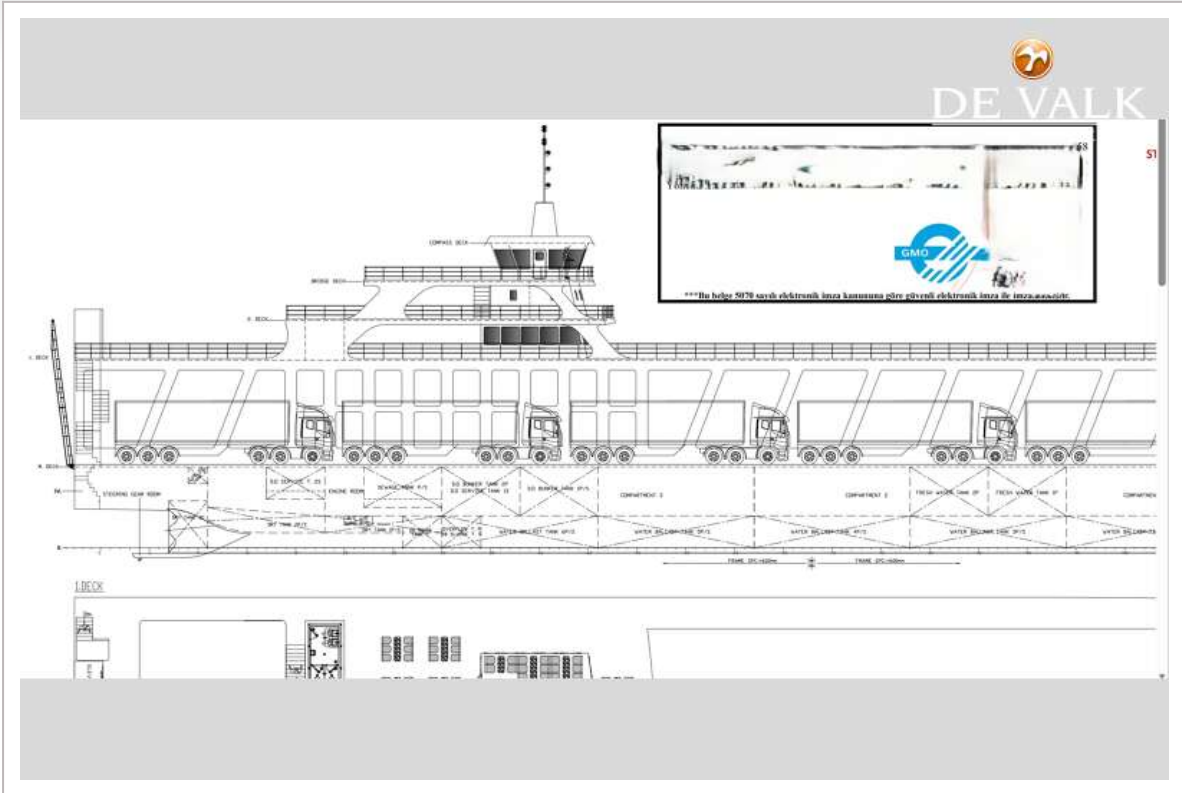
RO/RO PAX DOUBLE ENDED FERRY 90



RO/RO PAX DOUBLE ENDED FERRY 90



RO/RO PAX DOUBLE ENDED FERRY 90



RO/RO PAX DOUBLE ENDED FERRY 90

