



## RO/PAX LAND CRAFT FERRY 56

# RO/PAX LAND CRAFT FERRY 56

## VAN DE MAKELAAR

RO/PAX small Ferry Boat that is in daily operation. Brand New Engines installed in 2025. Last Dry Docking in February 2025, Shaft & Props extracted and services in 2025. All licenses are Valid, Capacity of CARS: 68 PAX: 400 Class: INSB GMDSS: A1

*Sofia Iliia-Salvanou*

## SPECIFICATIES

|                   |                                      |                      |                                  |
|-------------------|--------------------------------------|----------------------|----------------------------------|
| <b>Afmetingen</b> | 55.60 x 15.40 x 2.20 (m)             | <b>Bouwer</b>        |                                  |
| <b>Bouwjaar</b>   | 1979                                 | <b>Hutten</b>        |                                  |
| <b>Materiaal</b>  | Staal                                | <b>Slaapplaatsen</b> |                                  |
| <b>Motor(en)</b>  | 3 x MAN/SCANIA D2840/DSI 1456 diesel | <b>Pk/Kw</b>         | 3 x 254.00 (pk), 186.94 (kw)     |
| <b>Vraagprijs</b> | € 1.760.000 (BTW Niet betaald)       | <b>Ligplaats</b>     | elders / niet bij verkoopkantoor |

## CONTACT

|                |   |                 |                  |
|----------------|---|-----------------|------------------|
| <b>Kantoor</b> | De Valk Corfu   | <b>Telefoon</b> | (+30) 6948681503 |
| <b>Adres</b>   | New Port of Corfu, near Gouvia Marina<br>490 83 Corfu<br>GR | <b>E-mail</b>   | corfu@devalk.nl  |

## DISCLAIMER

Hoewel er uiterste zorg besteed is aan de correctheid, volledigheid en actualiteit van onze informatie kunnen hieraan geen rechten worden ontleend.



# RO/PAX LAND CRAFT FERRY 56

## ALGEMEEN

|                           |  |
|---------------------------|--|
| Model                     | RO/PAX LAND CRAFT FERRY 56                             |
| Type                      | motorjacht   |
| Lengte (m)                | 55,60  |
| Lengte waterlijn (m)      | 54,30  |
| Breedte (m)               | 15,40  |
| Diepgang (m)              | 2,20   |
| Bouwjaar                  | 1979   |
| Land                      | Griekenland  |
| Bruto tonnage             | 493,85   |
| Netto tonnage             | 190,45   |
| Romp materiaal            | staal  |
| Romp kleur                | wit  |
| Huiddikte romp (mm)       | Ultra sonic tested in February 2025. Report available. |
| Materiaal opbouw          | staal  |
| Dek materiaal             | staal  |
| Afwerking dek             | anti-slip verf   |
| Afwerking opbouw          | anti-slip verf   |
| Antifouling (jaar)        | 2025   |
| Raamlijsten               | staal  |
| Raammateriaal             | normaal glas   |
| Brandstoftank (liter)     | 50000  |
| Brandstof dagtank (liter) | ja   |
| Drinkwatertank (liter)    | ja   |
| Vuilwatertank (liter)     | ja   |
| Stuurwiel                 | ja   |
| Extra info                | Last shaft & prop extraction & service: 13.02.2025     |
| Extra info                | PAX Capacity:400, CARS: 68                             |
| Extra info                | Licenses: Valid GMDSS A1 INSB CLASS                    |

## MOTOR(EN)

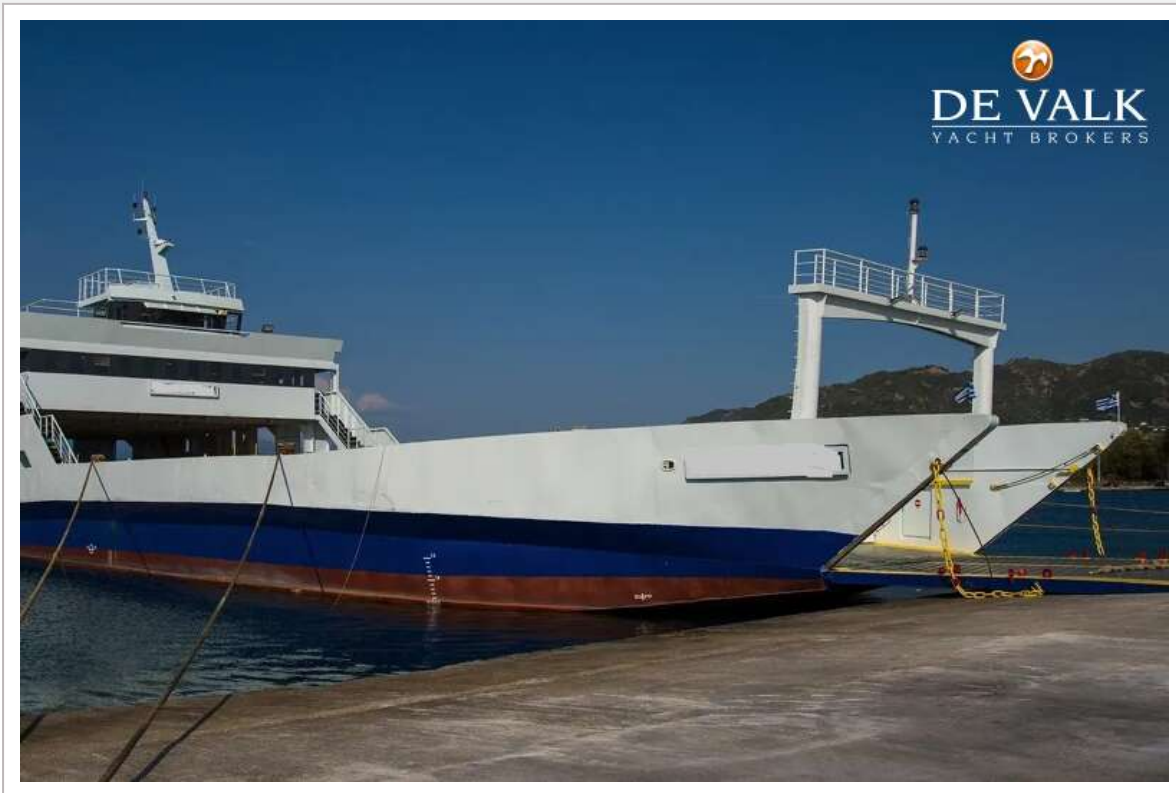


# RO/PAX LAND CRAFT FERRY 56

|                               |                |
|-------------------------------|----------------|
| <b>Aantal motoren</b>         | 3              |
| <b>Merk</b>                   | MAN/SCANIA     |
| <b>Type</b>                   | D2840/DSI 1456 |
| <b>Pk</b>                     | 254            |
| <b>kW</b>                     | 186.94         |
| <b>Brandstof</b>              | diesel         |
| <b>Geïnstalleerd in jaar</b>  | 2025           |
| <b>Maximale snelheid (kn)</b> | 12             |
| <b>Kruissnelheid (kn)</b>     | 10,5           |
| <b>Verbruik (ltr/uur)</b>     | 25             |
| <b>Aandrijving</b>            | schroefas      |



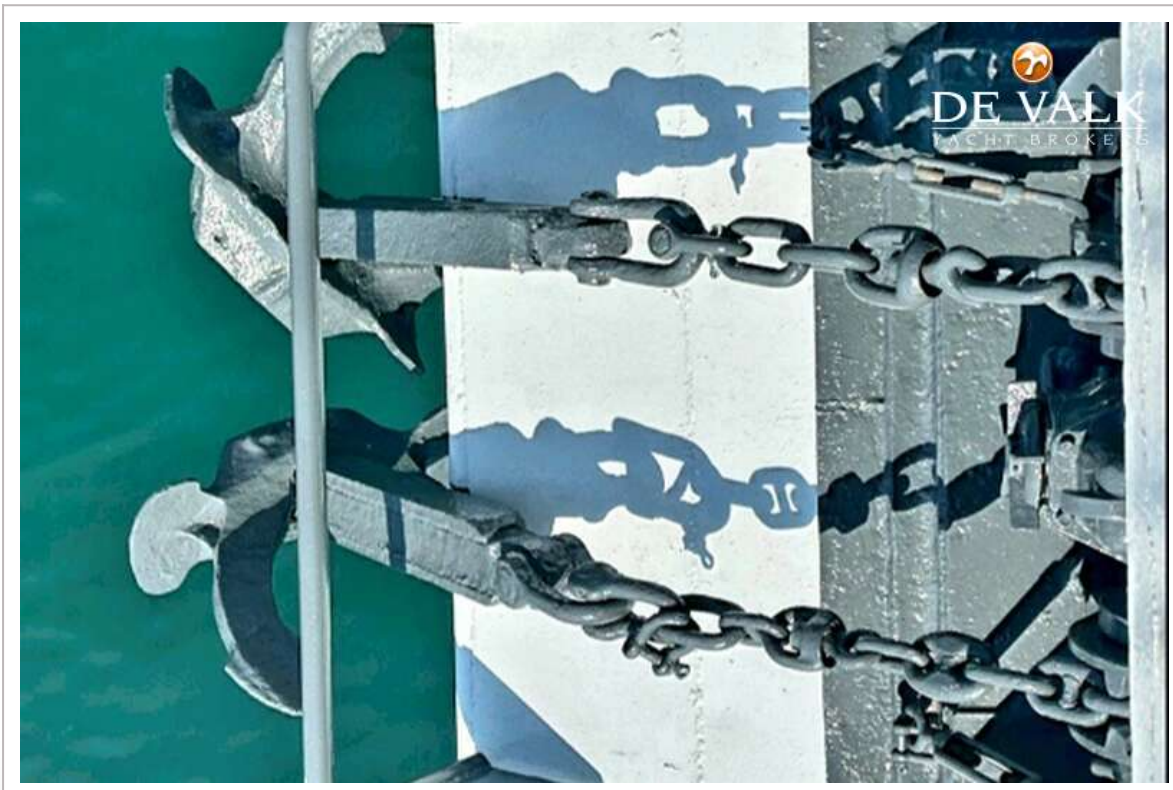
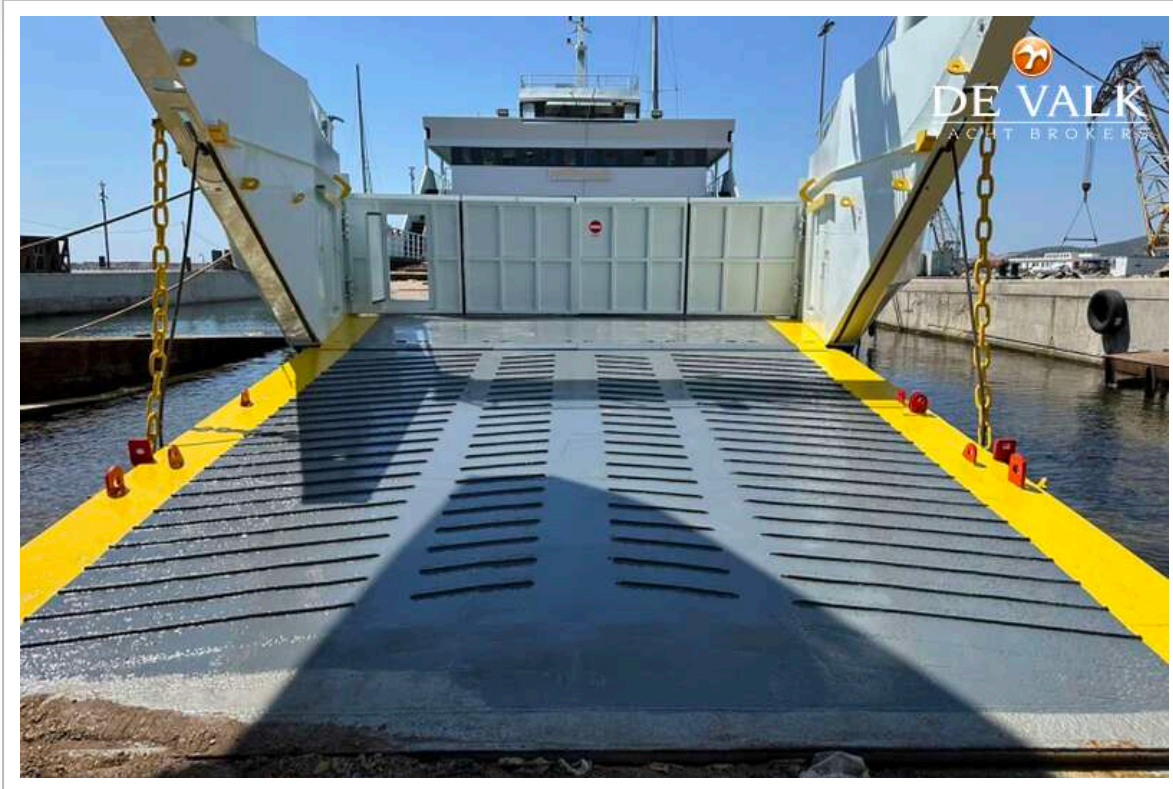
# RO/PAX LAND CRAFT FERRY 56



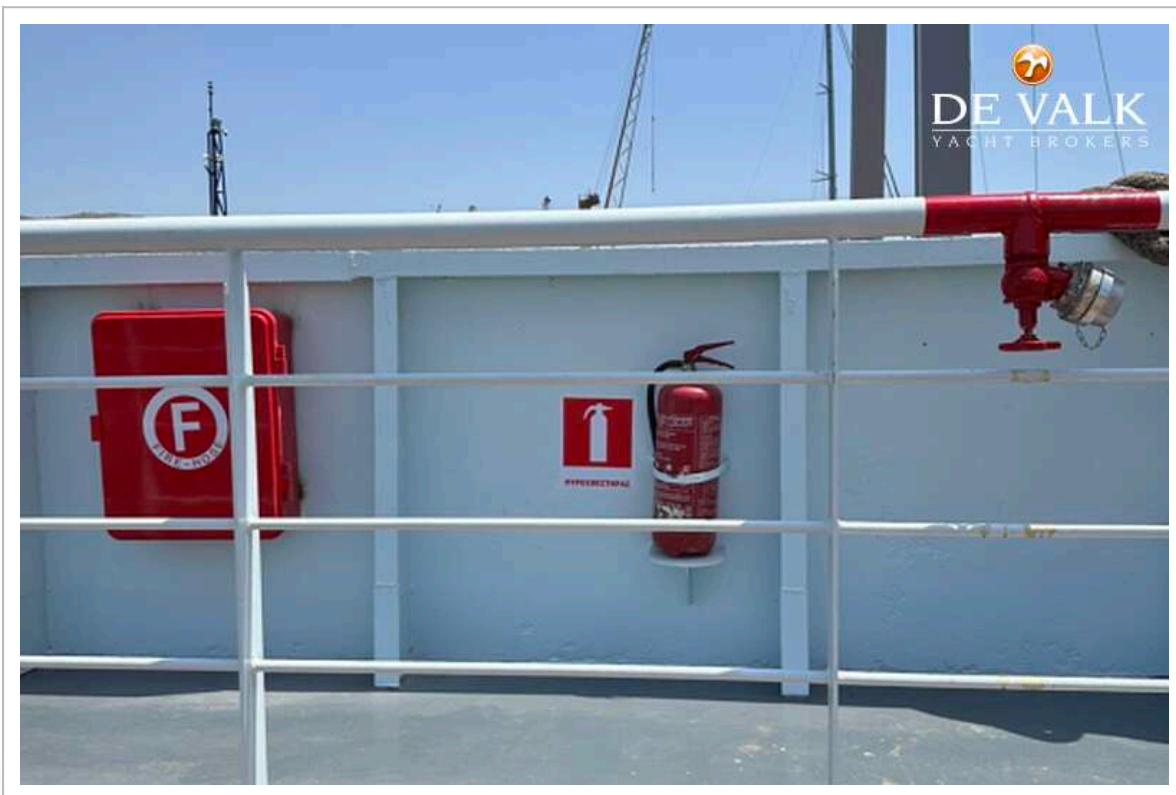
# RO/PAX LAND CRAFT FERRY 56



# RO/PAX LAND CRAFT FERRY 56

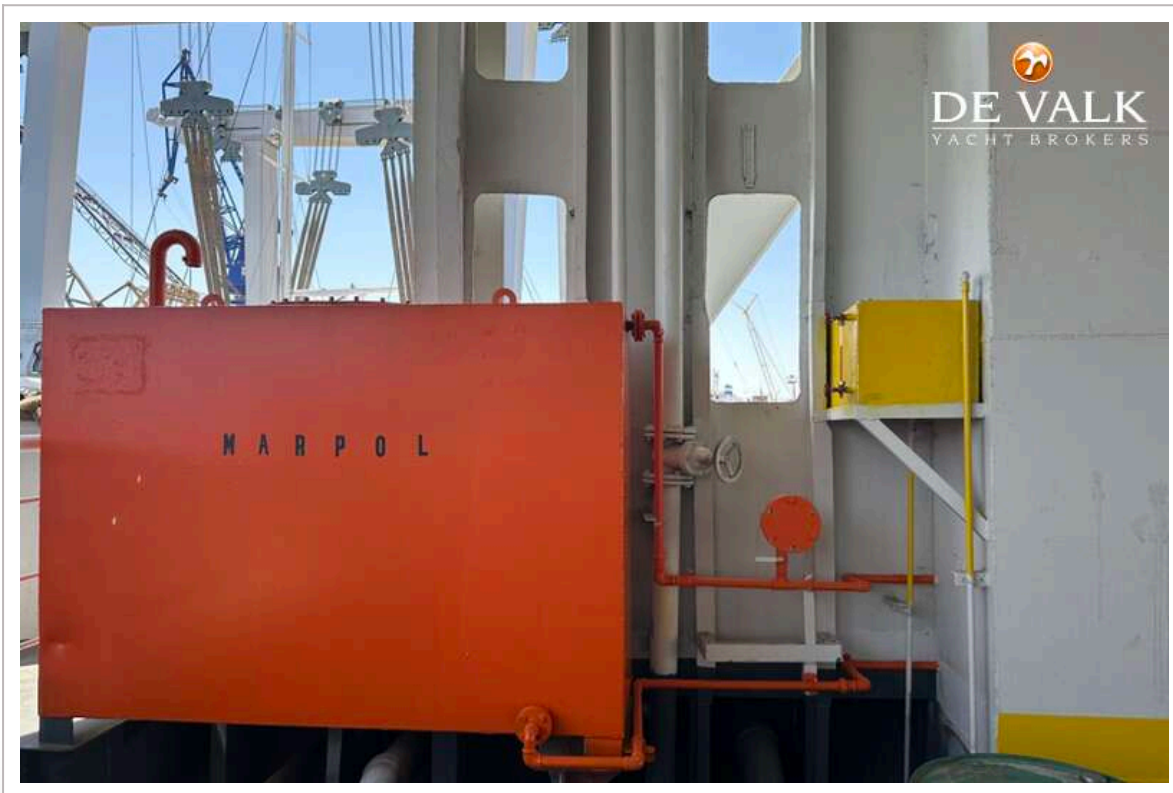
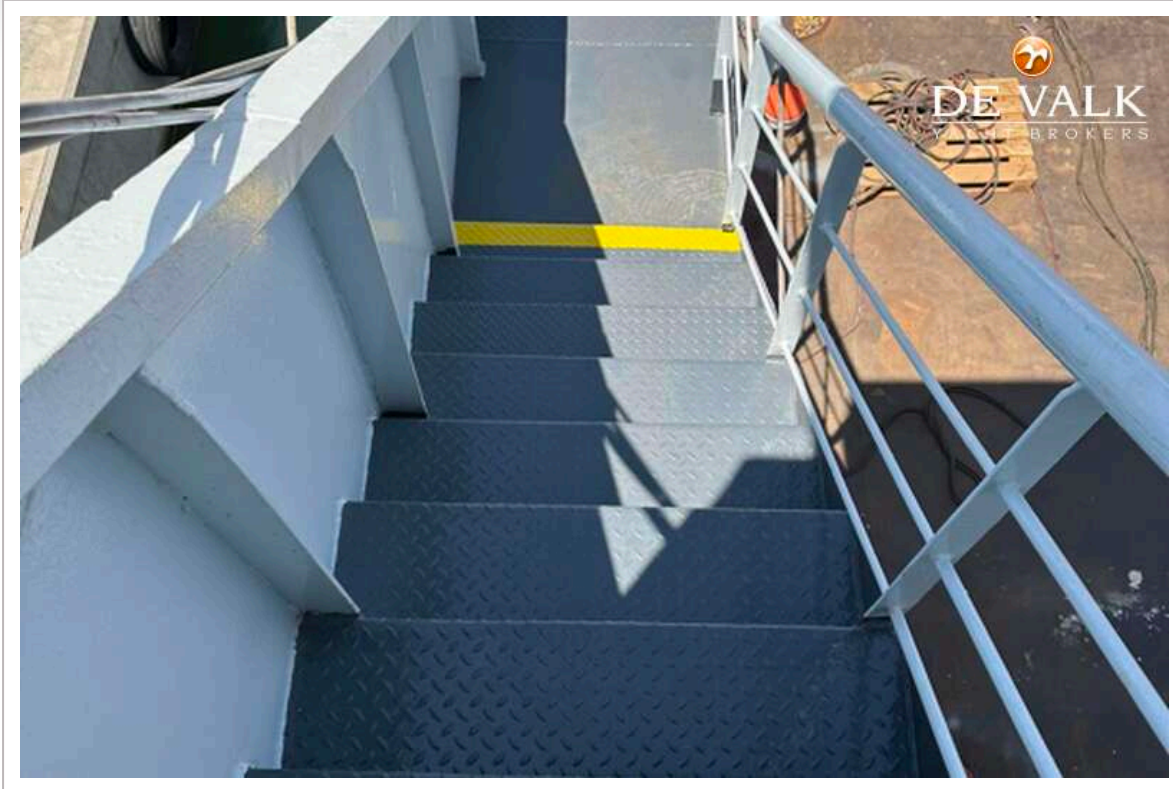


# RO/PAX LAND CRAFT FERRY 56

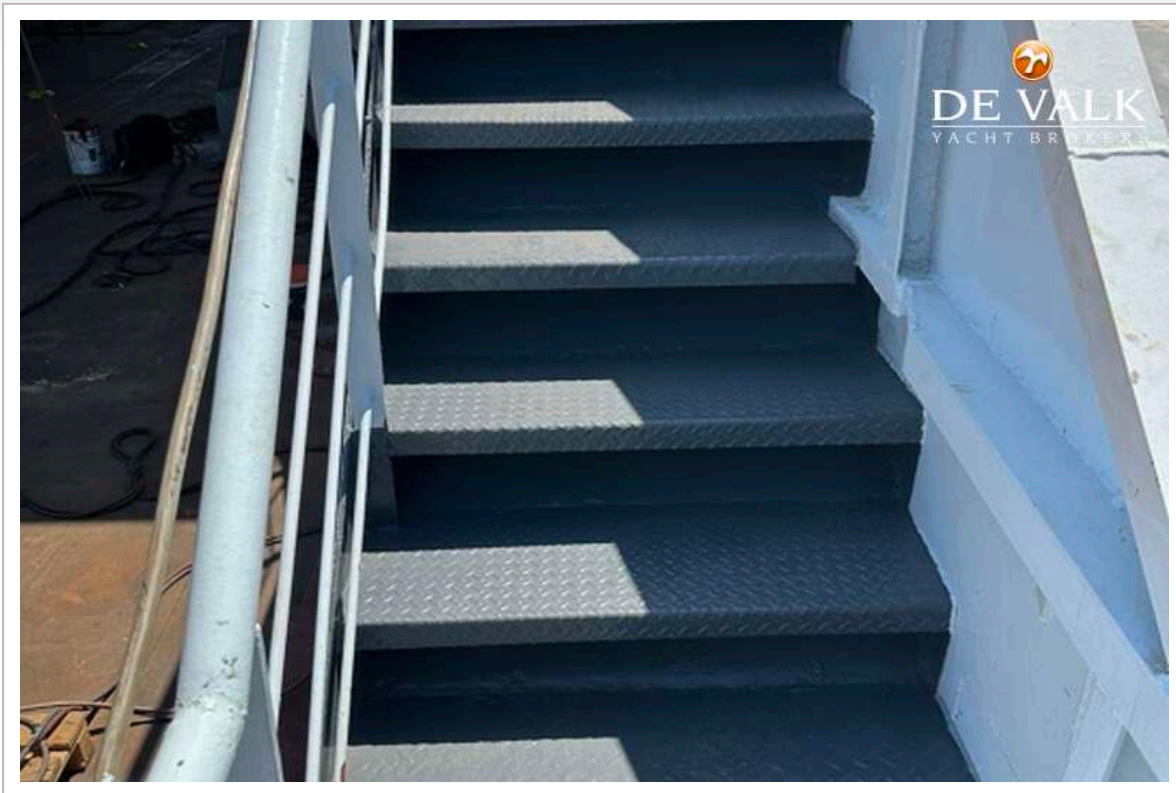




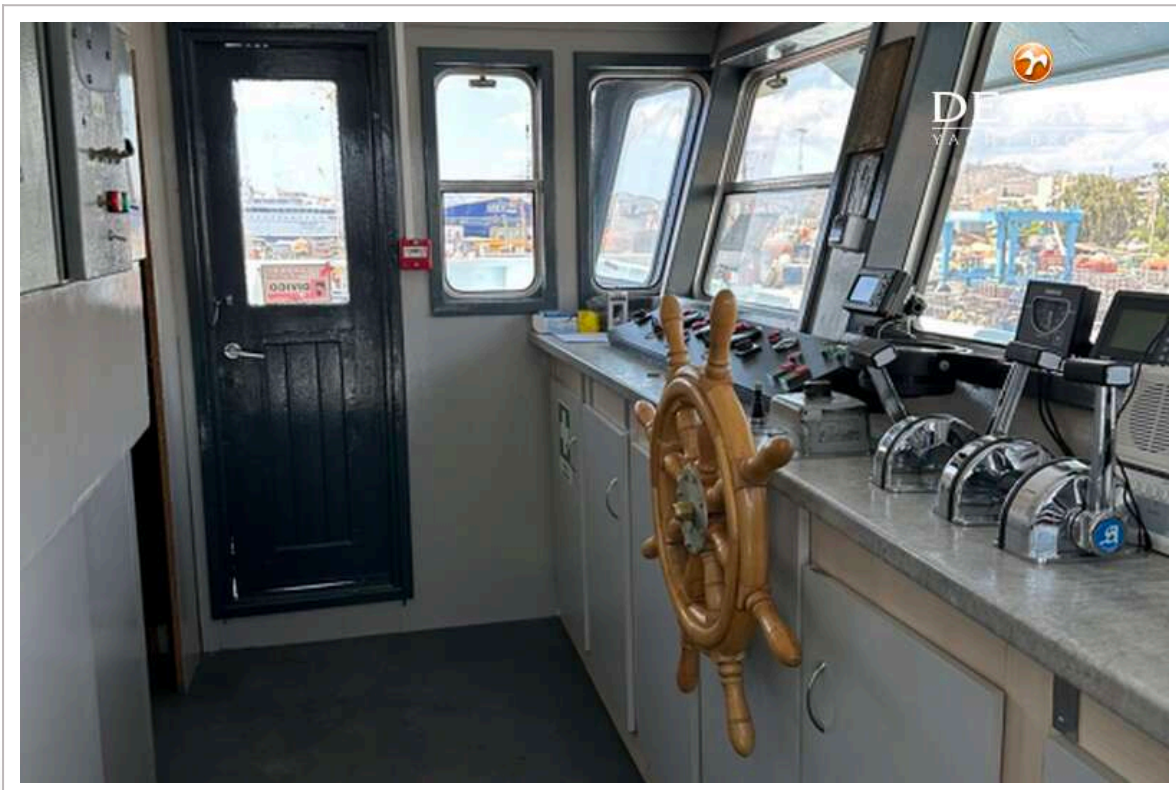
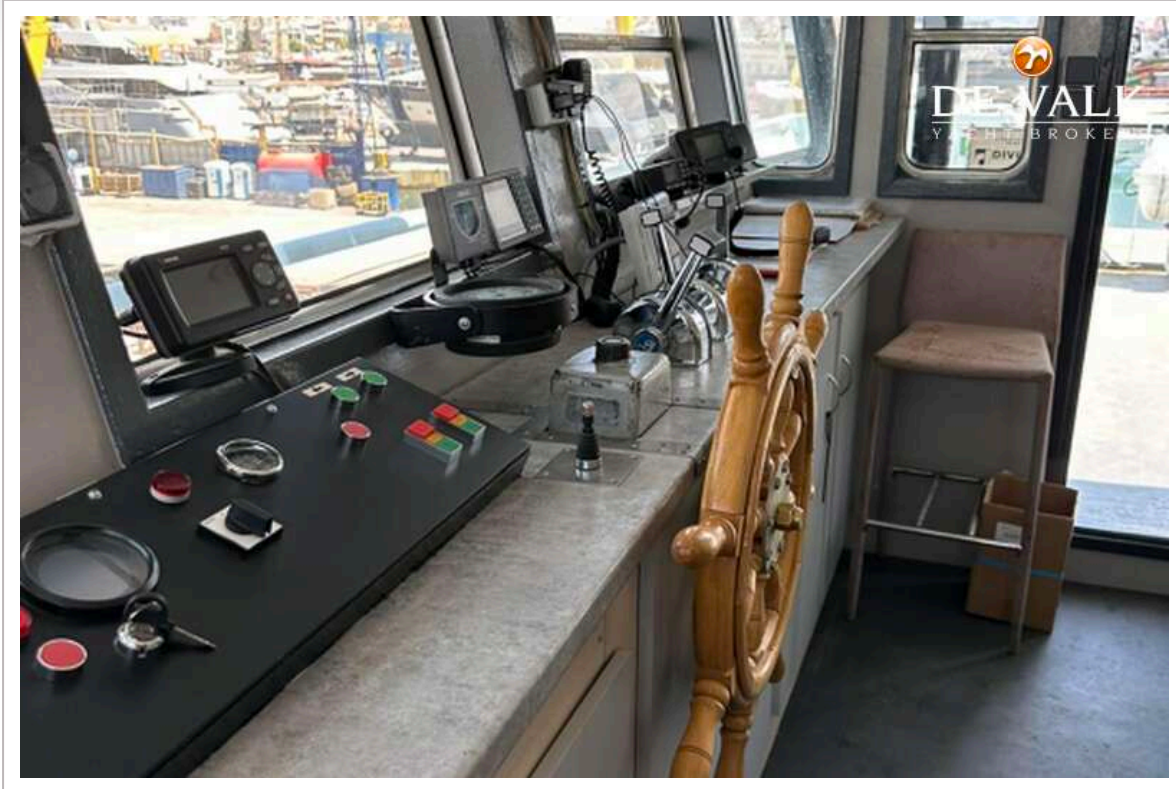
# RO/PAX LAND CRAFT FERRY 56



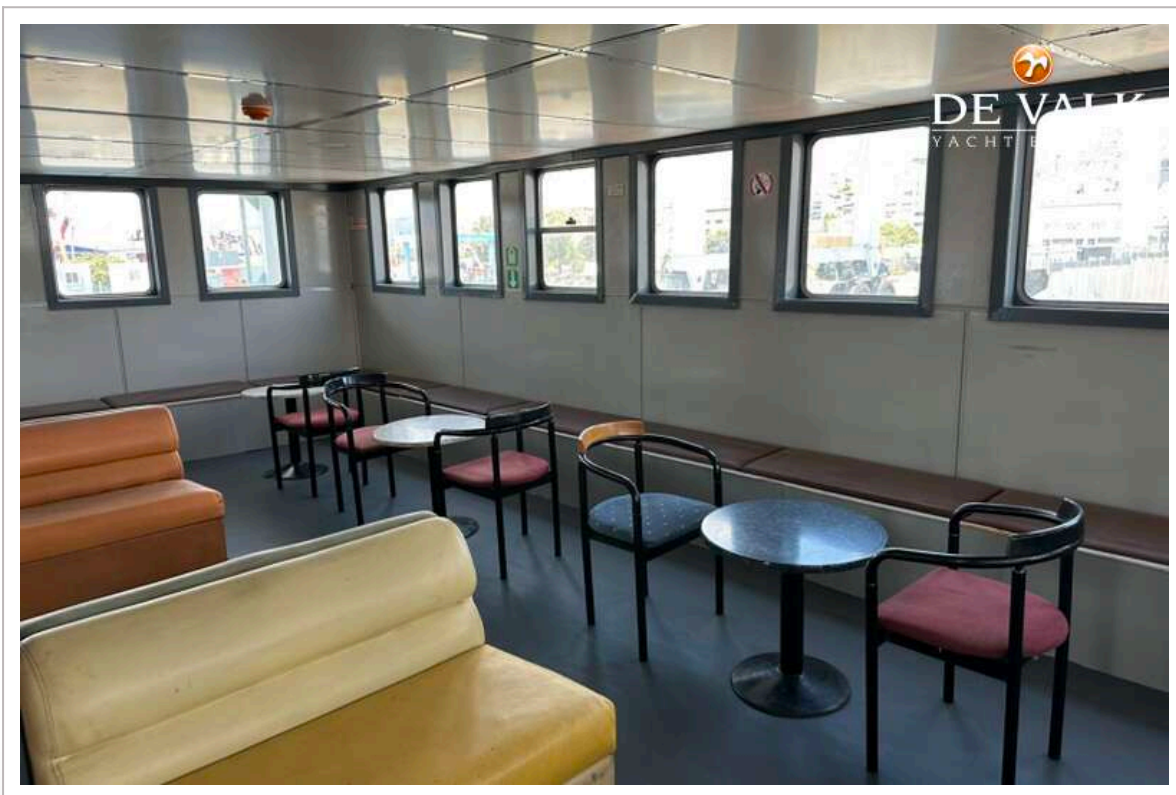
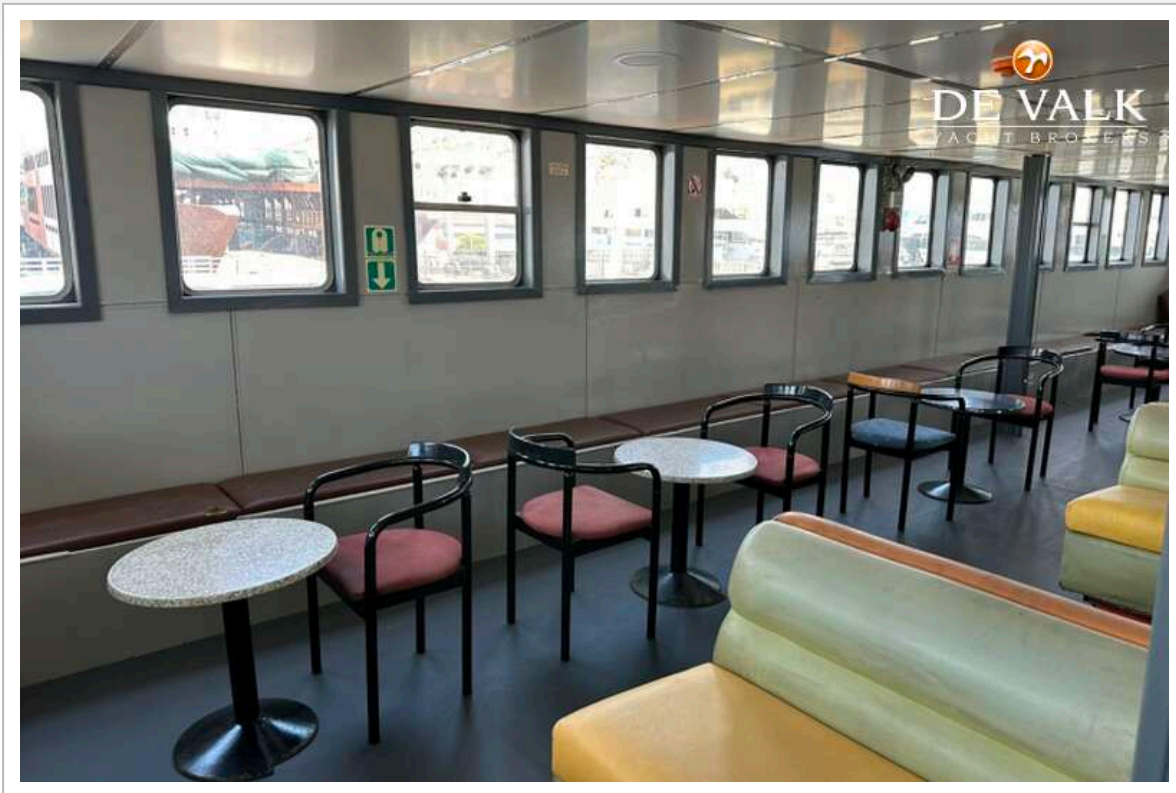
# RO/PAX LAND CRAFT FERRY 56



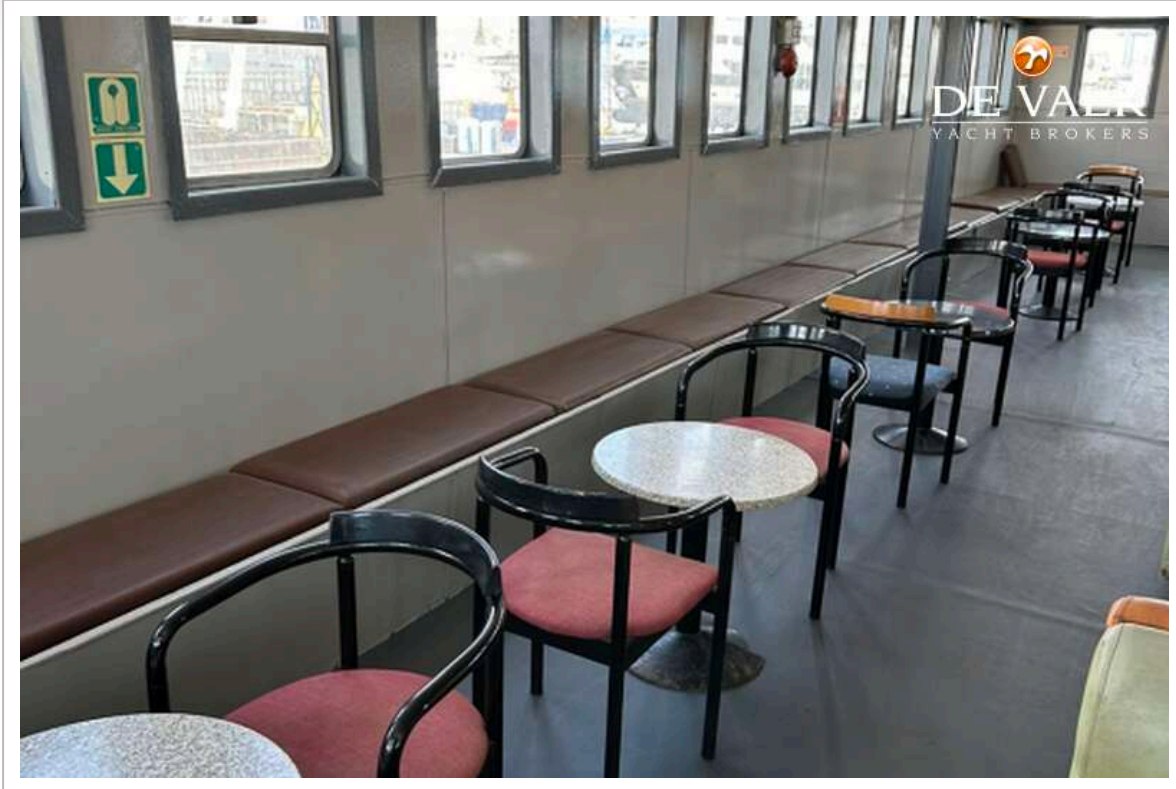
# RO/PAX LAND CRAFT FERRY 56



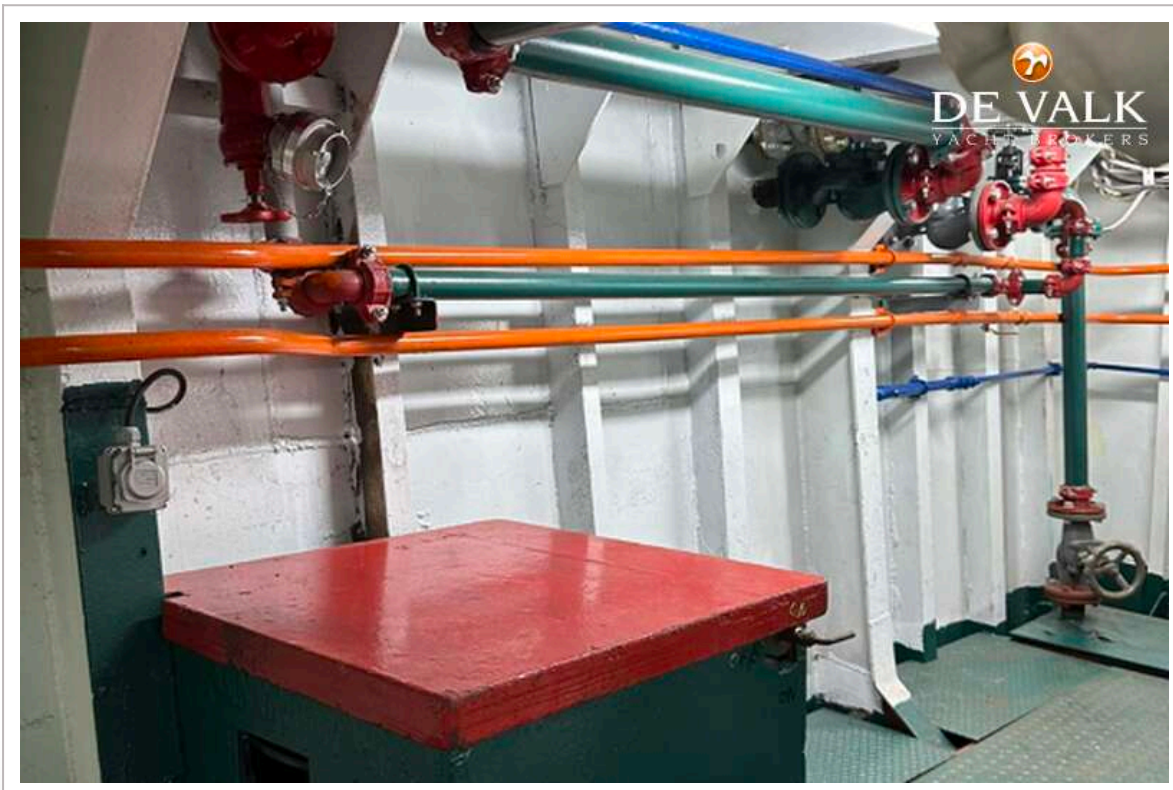
# RO/PAX LAND CRAFT FERRY 56



# RO/PAX LAND CRAFT FERRY 56



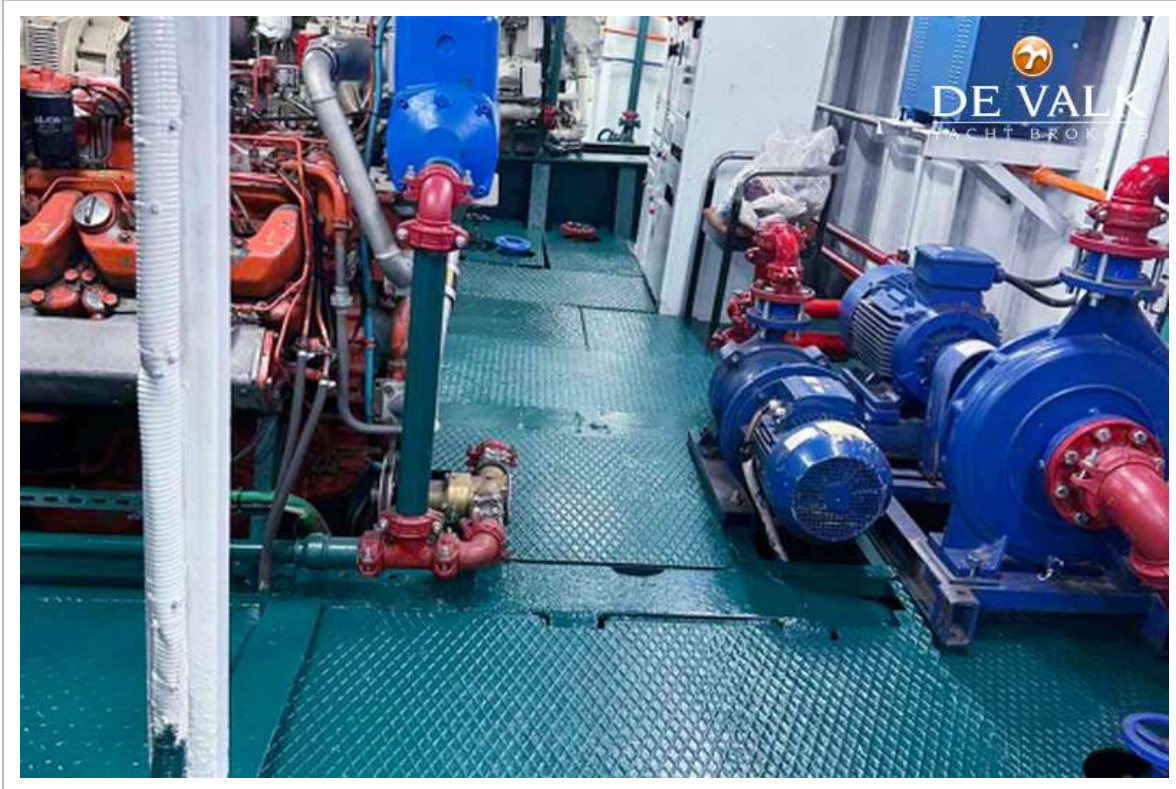
# RO/PAX LAND CRAFT FERRY 56

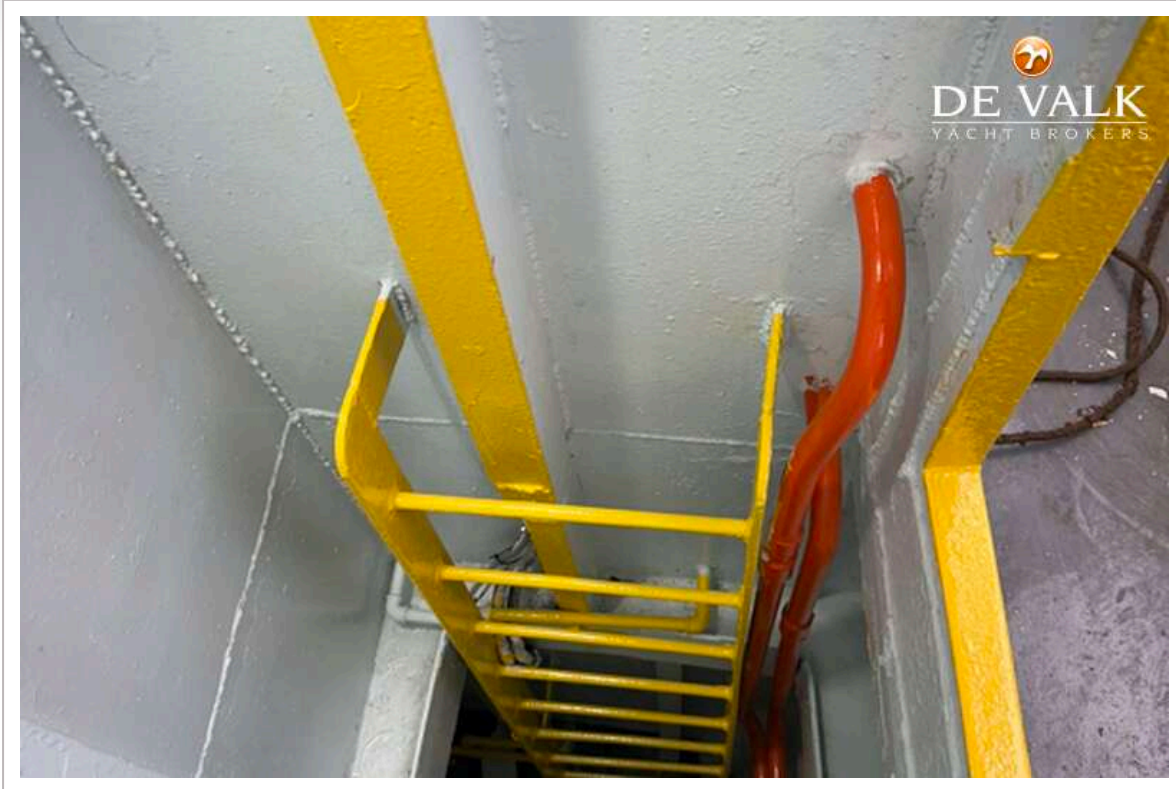


# RO/PAX LAND CRAFT FERRY 56

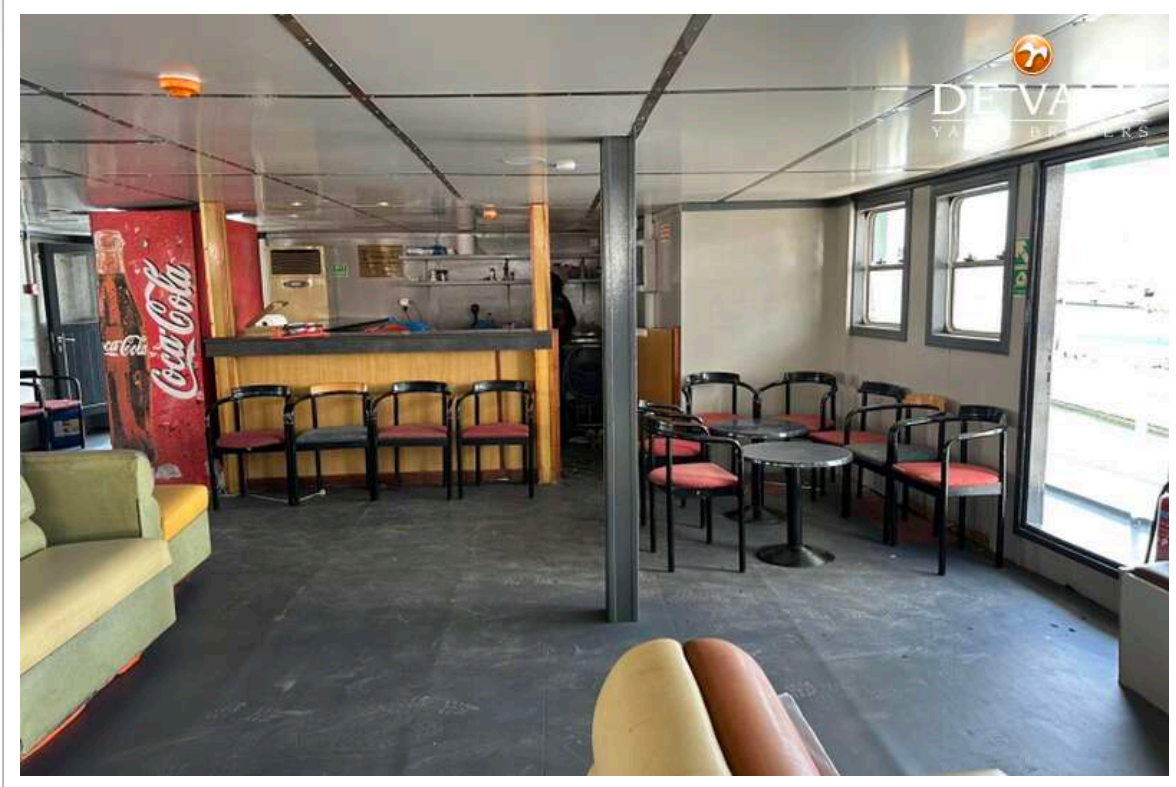


# RO/PAX LAND CRAFT FERRY 56

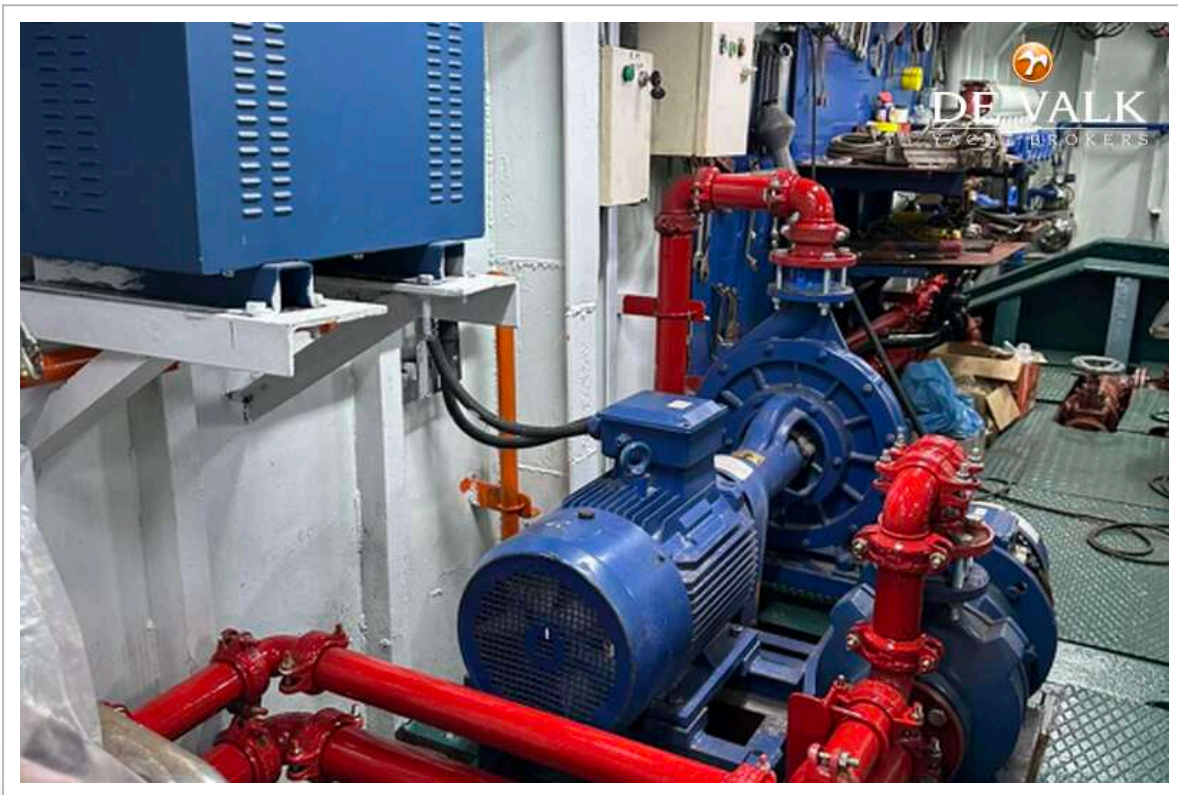


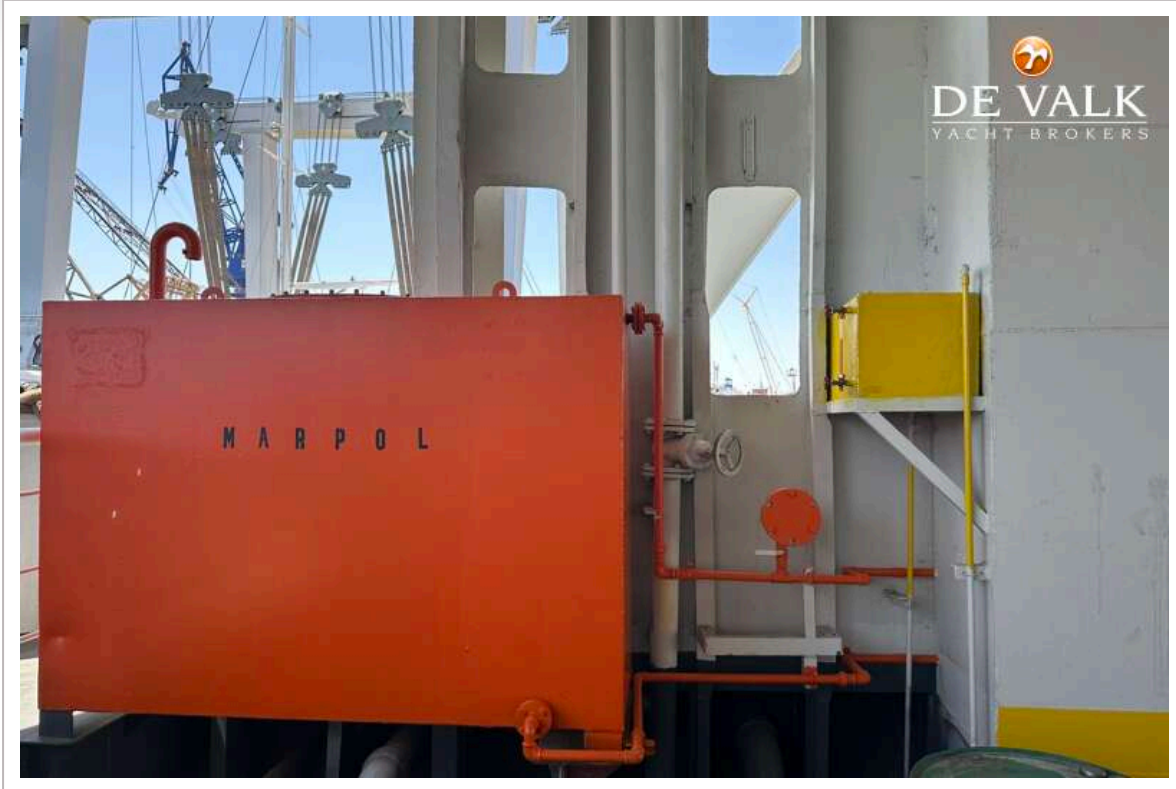


# RO/PAX LAND CRAFT FERRY 56



# RO/PAX LAND CRAFT FERRY 56





# RO/PAX LAND CRAFT FERRY 56

