



DE VALK  
YACHT BROKERS



PEER GYNT YACHT 36M EXPLORER



DE VALK  
YACHT BROKERS

# PEER GYNT YACHT 36M EXPLORER

## VAN DE MAKELAAR

This unique classic explorer is a luxury motor yacht with steel hull and composite superstructure. The elegantly designed exterior combines timeless aesthetics with functionality to create a stylish and comfortable atmosphere. The innovative combination of bulb and Hull Vane from Van Oossanen Naval Architects ensures maximum performance and extended range at sea. Modern galley equipment with Miele appliances and a 4 sqm cold room for fresh supplies enable the motivated crew to provide the best possible service for your well-being, even on long journeys.

*Oliver Stehula*

## SPECIFICATIES

<b>Afmetingen</b>	36.00 x 8.40 x 2.85 (m)	<b>Bouwer</b>	Peer Gynt Yachts
<b>Bouwjaar</b>	2012	<b>Hutten</b>	6
<b>Materiaal</b>	Staal	<b>Slaapplaatsen</b>	12
<b>Motor(en)</b>	2 x YANMAR 6AYM-WET H-Rate diesel	<b>Pk/Kw</b>	2 x 755.00 (pk), 555.68 (kw)
<b>Vraagprijs</b>	€ 8.900.000 (BTW Betaald)	<b>Ligplaats</b>	contact Palma

## CONTACT

<b>Kantoor</b>	De Valk Palma	<b>Telefoon</b>	+34 971 40 29 11
<b>Adres</b>	Port. Cala Nova, Avda. Joan Miro, 327 07015 Palma de Mallorca ES	<b>E-mail</b>	palma@devalk.nl

## DISCLAIMER

Hoewel er uiterste zorg besteed is aan de correctheid, volledigheid en actualiteit van onze informatie kunnen hieraan geen rechten worden ontleend.



# PEER GYNT YACHT 36M EXPLORER

## ALGEMEEN

<b>Model</b>	PEER GYNT YACHT 36M EXPLORER
<b>Type</b>	motorjacht
<b>Lengte (m)</b>	36,00
<b>Lengte waterlijn (m)</b>	32,51
<b>Breedte (m)</b>	8,40
<b>Diepgang (m)</b>	2,85
<b>Bouwjaar</b>	2012
<b>Gebouwd door</b>	Peer Gynt Yachts
<b>Land</b>	Turkije
<b>Ontwerper</b>	Van Oossanen
<b>Waterverplaatsing (t)</b>	350
<b>Bruto tonnage</b>	341
<b>Romp materiaal</b>	staal
<b>Materiaal opbouw</b>	Composite with carbon fiber reinforcement
<b>Brandstoftank (liter)</b>	56.400 with Alfa Laval MIB 303 cleaning system
<b>Drinkwatertank (liter)</b>	10.000
<b>Vuilwatertank (liter)</b>	Wastewater treatment with Selmar Blue Sea 3500
<b>Extra info</b>	In Winter 2018/19 exterior repainted with AWL Grip

## ACCOMMODATIE

<b>Hutten</b>	6
<b>Slaapplaatsen</b>	12
<b>Bemanningshut</b>	Forward Crew area
<b>Airco</b>	Marine Air 3 Chiller
<b>Warmwatersysteem</b>	220V/motor/CV 1x 10 kw electric
<b>Waterdruksysteem</b>	2x Gianneschi Jet 4B
<b>Eigenaarshut</b>	tweepersoonsbed Suite on the bridge deck with seating area
<b>Badkamer</b>	Bathtub and shower, walk- in closet
<b>Gastenhut 1</b>	VIP Cabin at the main deck, seating area with desk and PC



## MOTOR(EN)

Aantal motoren	2
Merk	YANMAR
Type	6AYM-WET H-Rate
Pk	755
kW	555.68
Brandstof	diesel
Geïnstalleerd in jaar	2012
Maximale snelheid (kn)	13,3
Kruissnelheid (kn)	10
Verbruik (ltr/uur)	90
Bereik (nm)	6200
Koelsysteem motor	indirecte warmtewisselaar
Aandrijving	schroefas
Boegschroef	TRAC 24"
Hekschroef	TRACK 20"
Generator	Kohler 2x 80kw
Generator 2	Kohler 35kw
Walstroom	50 kw 3- phase shore power transformer
Watermaker	2x Idromar MSE 130l/h

## NAVIGATIE

Kompas	Cassens & Plath T12 with ceiling reflector and NMEA connection
Electrisch kompas	Gyrocompass Anschütz ST22
Dieptemeter	Furuno FE800 50khz and 200khz
Log	Skipper DL- 1 Doppler Log
Radar	Wärtsilä NR4000 with 2x JRC 10- inch JMA-2254 antennas
GPS	GPS Compass JRC JRL 21 and DGPS Saab R6 NAV
Plotter	3x Wärtsilä RS8 Navigation Computer with Duramon 26" Displays
Elektronische kaart(en)	ECDIS



**AIS transceiver**

Saab R6 AIS

**Extra info**

Ship Main Server is a Linux based 64 Bit Xeon Server

**Extra info**

With 24 cores and 8TB

## UITRUSTING

**Anker**

Pool Bow: 2x350 kg, stainless steel

**Ankerketting**

250/200 m 19mm studlink chain

**Anker 2**

Stern: 1x300kg, stainless steel (chain is linked to bow anchors)

**Bijboot**

1x Castoldi JT 14 Diesel, 1x Scanner 420

**Landvasten**

2x 120m (60mm)floating lines on drum, 100m shore line

**Surround Sound System**

Bluesound multi- room audio in salon, owners cabin and sun deck

**Brandblusser in motorkamer**

FM 200 protected with fire hose connection

**Automatisch brandblussysteem**

Firefighting RINA- approved components, FM 200 protected

**Extra info**

Smoke detectors in each room, around 50 in total



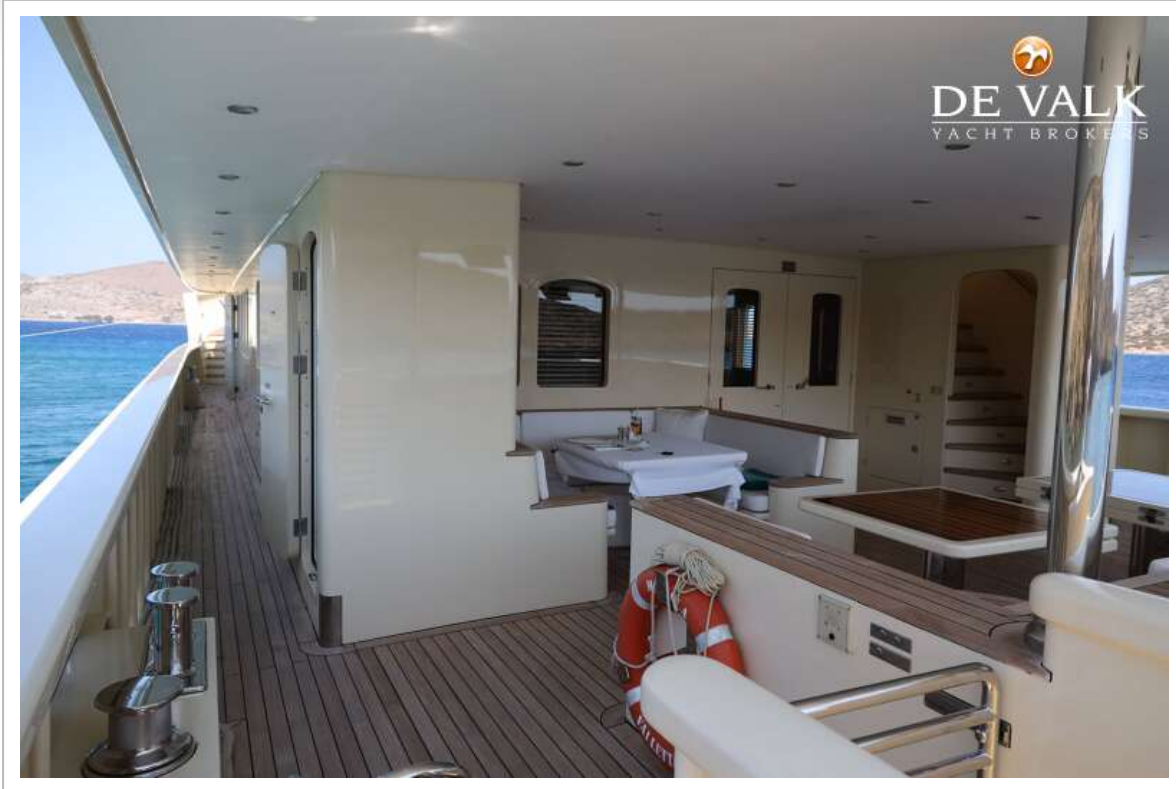
# PEER GYNT YACHT 36M EXPLORER



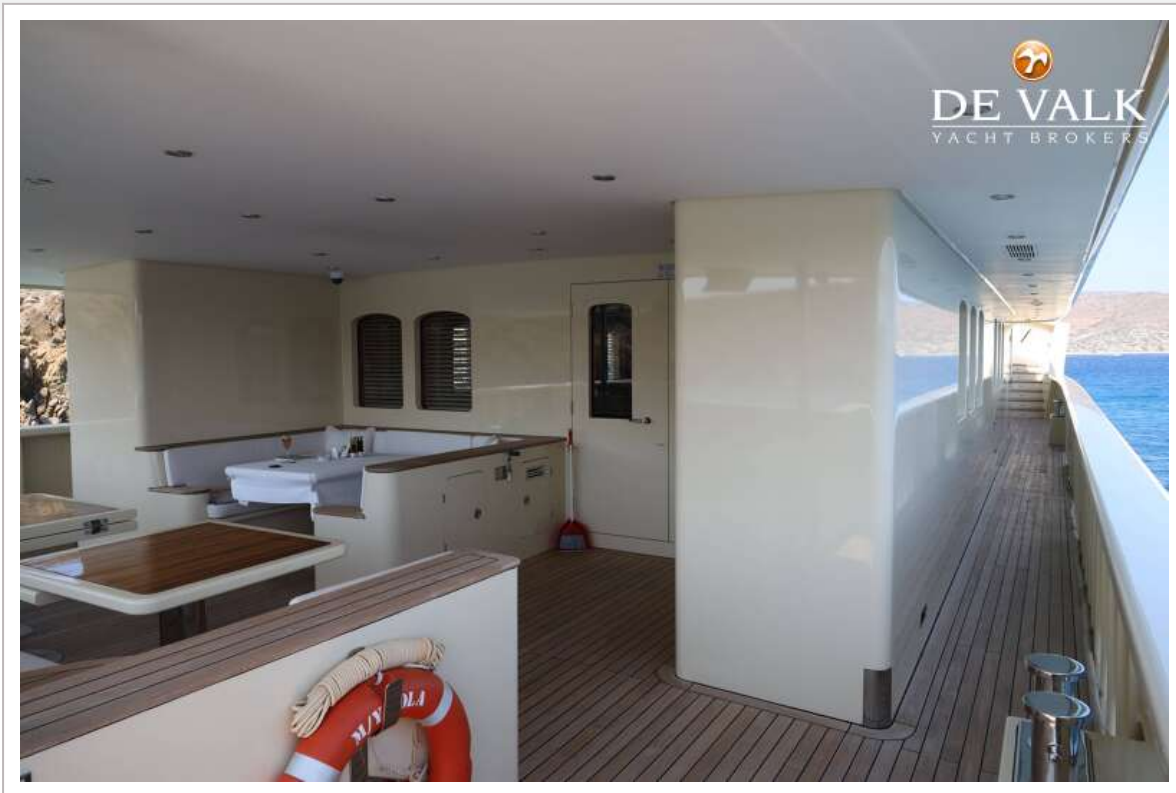
# PEER GYNT YACHT 36M EXPLORER



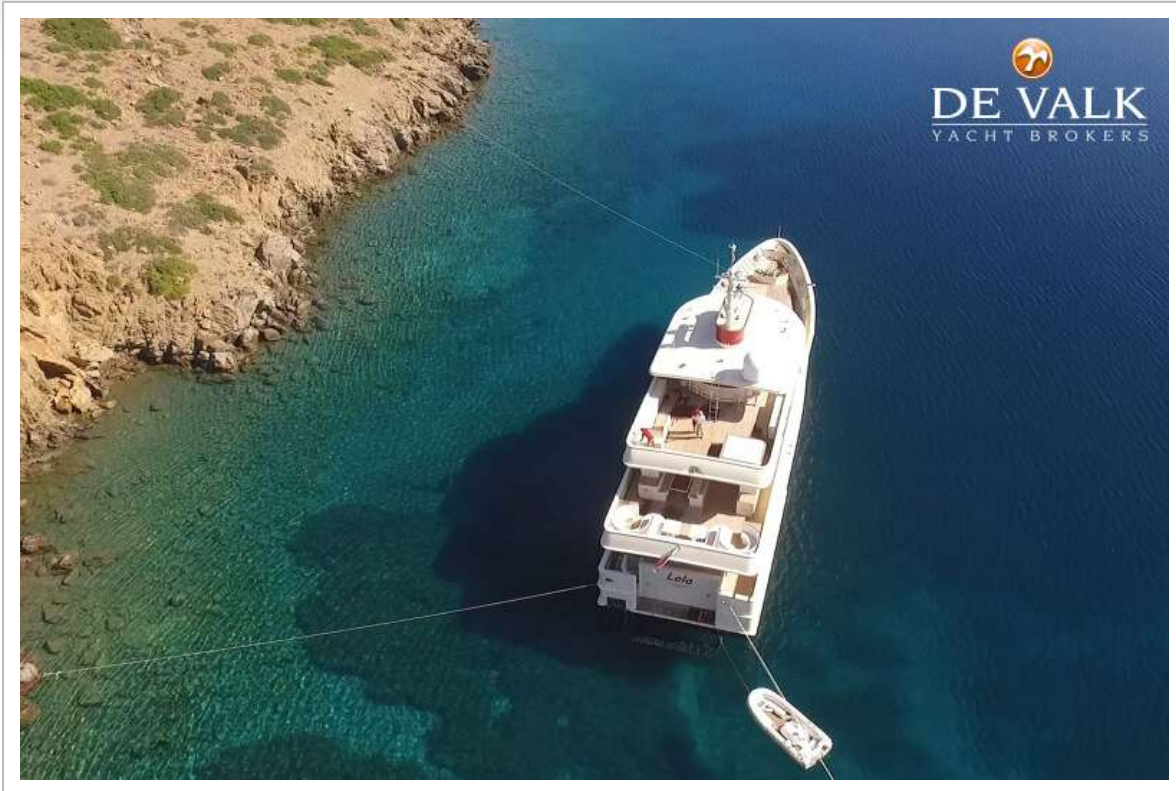
# PEER GYNT YACHT 36M EXPLORER



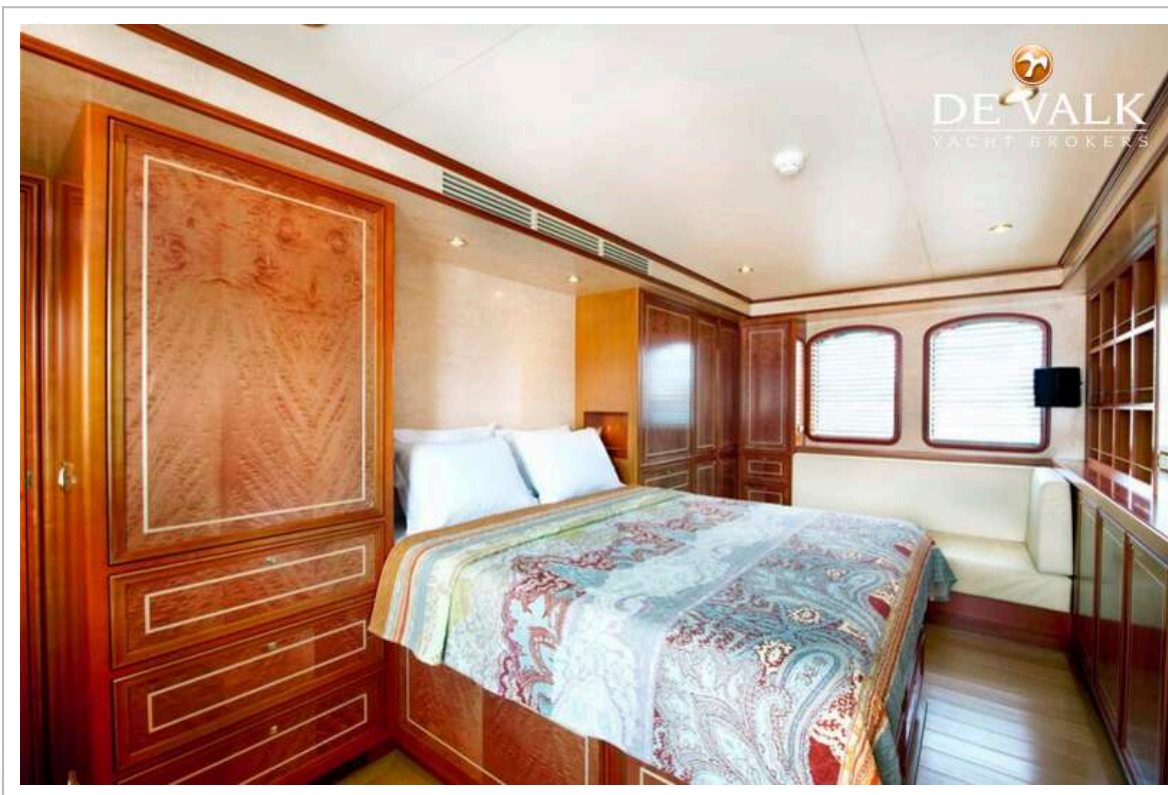
# PEER GYNT YACHT 36M EXPLORER



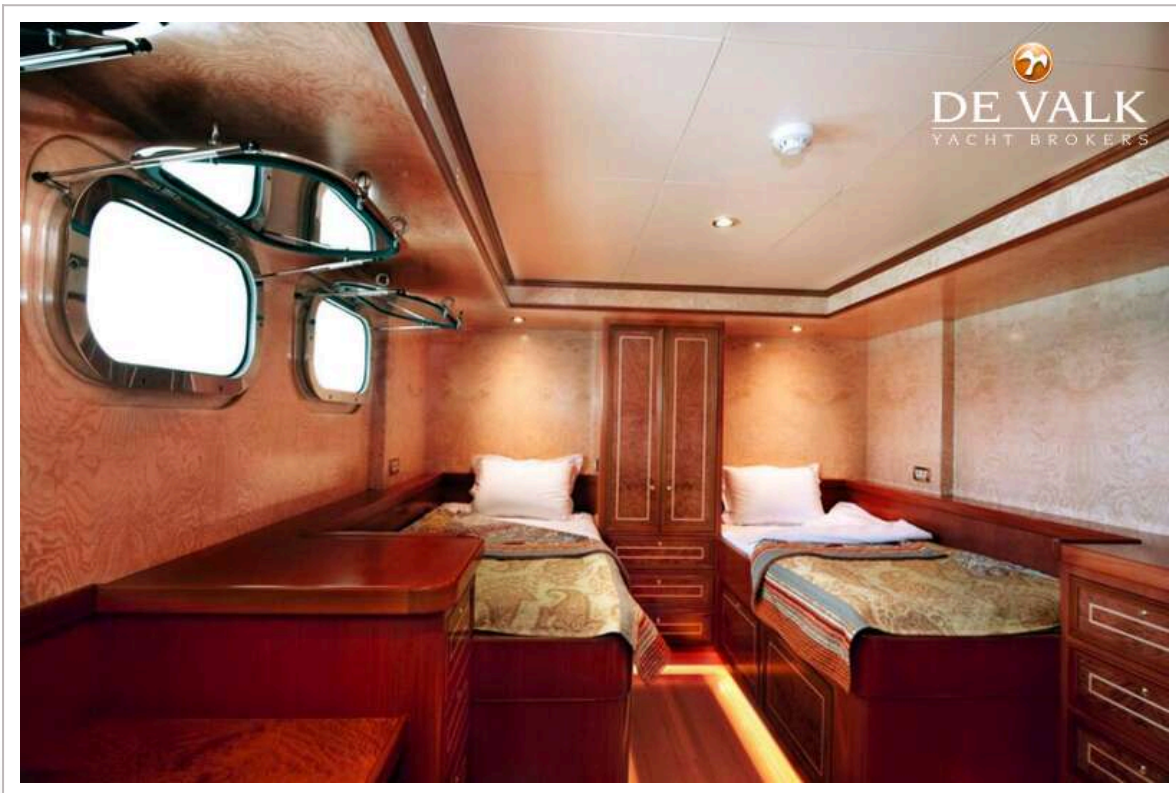
# PEER GYNT YACHT 36M EXPLORER



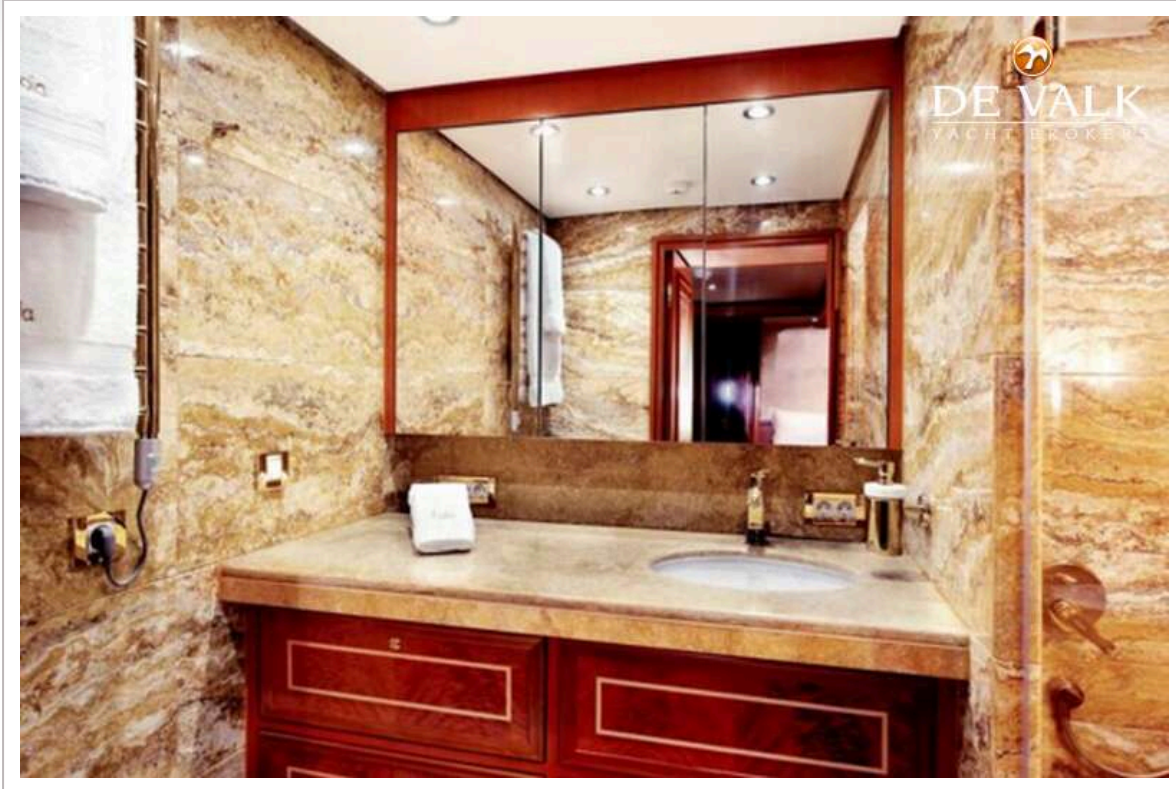
# PEER GYNT YACHT 36M EXPLORER



# PEER GYNT YACHT 36M EXPLORER



# PEER GYNT YACHT 36M EXPLORER



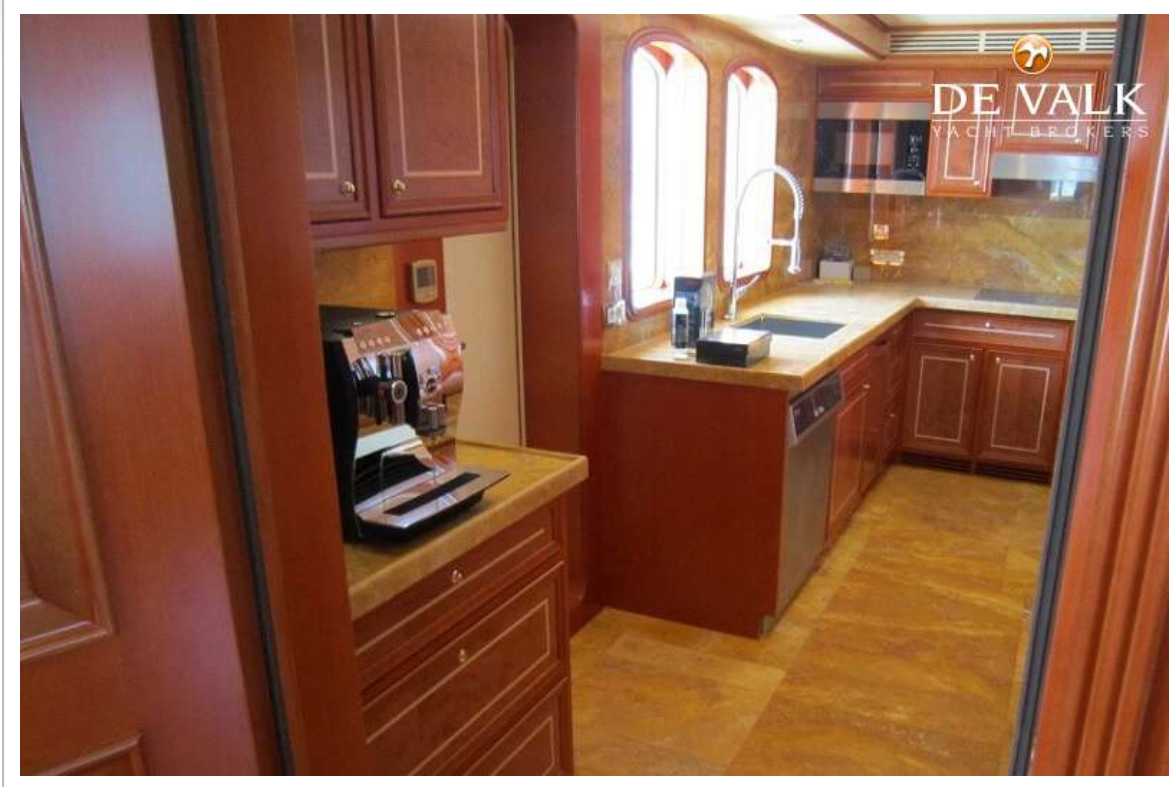
# PEER GYNT YACHT 36M EXPLORER



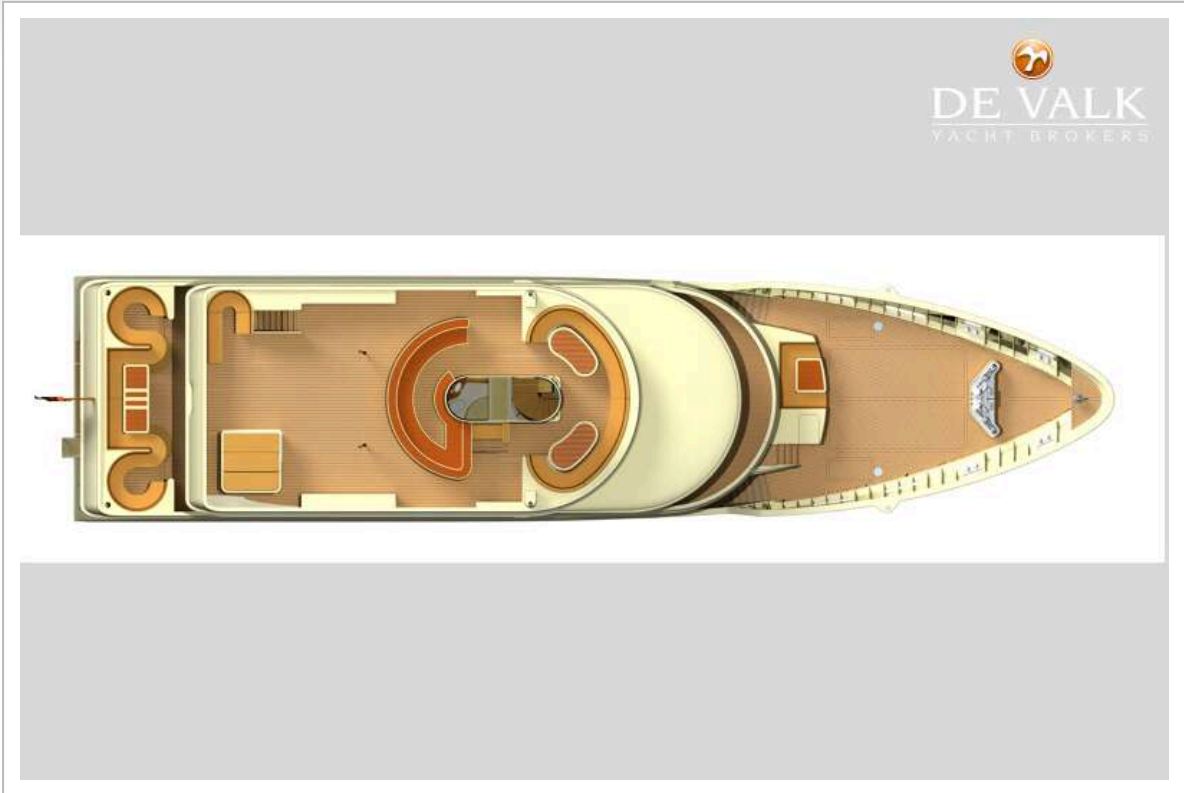
# PEER GYNT YACHT 36M EXPLORER



# PEER GYNT YACHT 36M EXPLORER



# PEER GYNT YACHT 36M EXPLORER



# PEER GYNT YACHT 36M EXPLORER

