



DE VALK  
YACHT BROKERS



W.A. SOUTER & SONS 34 METER ALLOY



DE VALK  
YACHT BROKERS

## VAN DE MAKELAAR

Special pre-season offer price until 30/05/26!! Built and commissioned at the renowned shipyard Souter in the Isle of Wight, the now M/Y Atlantic Endeavour, was one of the early super yachts designed by famous naval architect and leading yacht designer, Don Shead. This strong and sea worthy long distance aluminium yacht has the incredible history as race sailing support vessel while rebuilt into a luxury yacht. The heavy equipment, the long range autonomy, impressive seaworthiness, immense deck area and very thoughtful and comfortable interior layout makes the vessel unique in many ways.

*Tue Simon Fasting*

## SPECIFICATIES

<b>Afmetingen</b>	34.00 x 6.90 x 3.68 (m)	<b>Bouwer</b>	W.A. Souter & Sons
<b>Bouwjaar</b>	1984	<b>Hutten</b>	4
<b>Materiaal</b>	Aluminium	<b>Slaapplaatsen</b>	10
<b>Motor(en)</b>	2 x Caterpillar D2542MLE V12 diesel	<b>Pk/Kw</b>	2 x 700.00 (pk), 515.20 (kw)
<b>Vraagprijs</b>	€ 990.000 (BTW Betaald)	<b>Ligplaats</b>	contact verkoopkantoor

## CONTACT

<b>Kantoor</b>	De Valk Barcelona	<b>Telefoon</b>	+34 932 202 825
<b>Adres</b>	Barcelona region 08392 Barcelona ES	<b>E-mail</b>	barcelona@devalk.nl

## DISCLAIMER

Hoewel er uiterste zorg besteed is aan de correctheid, volledigheid en actualiteit van onze informatie kunnen hieraan geen rechten worden ontleend.



## ALGEMEEN

<b>Model</b>	W.A. SOUTER & SONS 34 METER ALLOY
<b>Type</b>	motorjacht
<b>Lengte (m)</b>	34,00
<b>Lengte waterlijn (m)</b>	28,87
<b>Breedte (m)</b>	6,90
<b>Diepgang (m)</b>	3,68
<b>Bouwjaar</b>	1984
<b>Te waterlating</b>	Refit 2014
<b>Gebouwd door</b>	W.A. Souter & Sons
<b>Land</b>	Verenigd Koninkrijk
<b>Ontwerper</b>	Don Shead Yacht Design
<b>Waterverplaatsing (t)</b>	139
<b>Romp materiaal</b>	aluminium
<b>Kiel type</b>	Made of 36mm nominal thickness alloy plate, welded to the hull
<b>Materiaal opbouw</b>	aluminium
<b>Dek materiaal</b>	aluminium
<b>Afwerking dek</b>	teak 1,25 inch
<b>Afwerking kuip</b>	teak
<b>Antifouling (jaar)</b>	2025
<b>Raamlijsten</b>	roestvast staal
<b>Raammateriaal</b>	hardglas
<b>Patrijspoorten</b>	roestvast staal
<b>Isolatie</b>	ja
<b>Flybridge</b>	ja
<b>Mast neerklapbaar</b>	handbediend
<b>Brandstoftank (liter)</b>	aluminium 33,000 liters in 4 tanks integrated into the hull
<b>Inhoudsmeter (brandstoftank)</b>	ja
<b>Brandstof dagtank (liter)</b>	ja
<b>Inhoudsmeter (dagtank)</b>	ja
<b>Drinkwatertank (liter)</b>	aluminium 6000



Inhoudsmeter (drinkwatertank)	ja
Vuilwatertank (liter)	aluminium 1000
Inhoudsmeter (vuilwatertank)	ja
Grijswatertank (liter)	aluminium 1000
Inhoudsmeter (grijswatertank)	ja
Stuurwiel	electrisch
Stuurwiel op flybridge	electrisch
Noodhelmstok	Connect to hydraulic pump
Extra info romp	Few jobs pending
Extra info	2 sea water main inlet with manifold
Extra info	Special pre-season price until 30/5
Extra info	Commercial vessel for charter

## ACCOMMODATIE

Hutten	4
Slaapplaatsen	10
Bemanningshut	3
Bemanning slaapplaatsen	5
Verwarming	ja
Airco	airco omkeerbaar Dometic and uses R407C gas
Navigatie ruimte	ja
Kaartentafel	ja
Keuken	1 on main deck and 1 lower deck crew
Spoelbak	roestvast staal
Kooktoestel	elektrisch 2
Oven	2
Afzuigkap	2
Magnetron	2
Koelkast	4
Vriezer	4
Warmwatersysteem	220V + motor



Waterdruksysteem	elektrisch
Vaatwasser	2
Ijsblokjesmachine	2
Koffiezetapparaat	2
Kommaliewan	ja
Eigenaarshut	tweepersoonsbed
Kledingkast	hangend/lades/legplanken
Badkamer	en suite
Douche	ja
Bad	ja
Jacuzzi	ja
Extra info	In suite office
Gastenhut 1	tweepersoonsbed
Kledingkast	hangend/lades/legplanken
Badkamer	en suite
Gastenhut 2	twee enkele bedden
Kleerkast	hangend/lades/legplanken
Badkamer	en suite
Gastenhut 3	twee enkele bedden
Kleerkast	hangend/lades/legplanken
Badkamer	En suite
Extra info	2 X 1 pullman twin cabins

## MOTOR(EN)

Aantal motoren	2
Merk	Caterpillar
Type	D2542MLE V12
Pk	700
kW	515.20
Brandstof	diesel
Geïnstalleerd in jaar	1984



<b>Maximale snelheid (kn)</b>	13
<b>Kruissnelheid (kn)</b>	10
<b>Verbruik (ltr/uur)</b>	60
<b>Bereik (nm)</b>	3000
<b>Aandrijving</b>	schroefas
<b>Motorbediening</b>	Micro Commander system at both helm positions
<b>Keerkoppeling</b>	hydraulisch ZF
<b>Boegschroef</b>	hydraulisch Bronze propeller
<b>Type schroef</b>	Twin, contra-rotating cast Bronze Teignbridge
<b>Handlenspomp</b>	ja
<b>Elektrische lenspomp</b>	High voltage and high performance pumps
<b>Bilge alarm</b>	Marinex alarm system integrated + portable Honda gasoline
<b>Generator</b>	2 X Perkins 4236 diesel engines 50KW / each
<b>Draaiuren generator</b>	24,000 / each
<b>Generator 2</b>	Onan / Cummins MDK8V 19KW
<b>Draaiuren generator 2</b>	8000
<b>Accu's</b>	2 battery banks in good conditions charged with modern chargers
<b>Startaccu</b>	Main engine / gensets separated
<b>Navigatie accu</b>	ja
<b>Generatoraccu</b>	ja
<b>Watermaker</b>	H.E.M. serviced 2025
<b>Stabilisatoren</b>	vin Koop Nautic

## NAVIGATIE

<b>Kompas</b>	Danforth
<b>Electrisch kompas</b>	Simrad fluxgate + Furuno sat. compass
<b>Dieptemeter</b>	ja
<b>Windmeetset</b>	Ratheon
<b>Marifoon</b>	Sailor and Skanti DSC
<b>Autopiloot</b>	Robertson AP9



Roerstand aanwijzer	ja
GPS	Furuno GP-32
Plotter	Furuno
AIS transceiver	Furuno FA 1-50

## UITRUSTING

Bimini	Stainless steel frame with bimini in good shape
Loopplank	Angel Gandola
Anker	Bower 150kg
Ankerketting	170m - 20mm - standard link
Anker 2	Bower 150kg
Ankerketting	170m- 20mm - stud link
Ankerlier	hydraulisch Lofrans electric 3 phase with devils claws
Davits	2 side davits on stern to carry and discharge tenders with ease
Dekkraan	hydraulisch HIAB resting in the lazarette, functions with wide open aft deck
Reddingsvlot	2 x Viking 20 person SOLAS A
Zwemvesten	Inflatable
Trossensnijder	Spur on shafts
Ruitenwisser	ja
Stootkussens	ja
Reserve onderdelen	ja
Gereedschap	ja
Alarm systeem	ja
TV	ja
Satelliet	ja
Speakers in salon	ja
Speakers in hut	ja
Klok - barometer	ja
Brandblusser	Co2 in some areas and lazarette + dry powder units all areas
Brandblusser in motorkamer	FM200



Automatisch brandblussysteem

ja

Extra info

Two complete fireman suits

Extra info

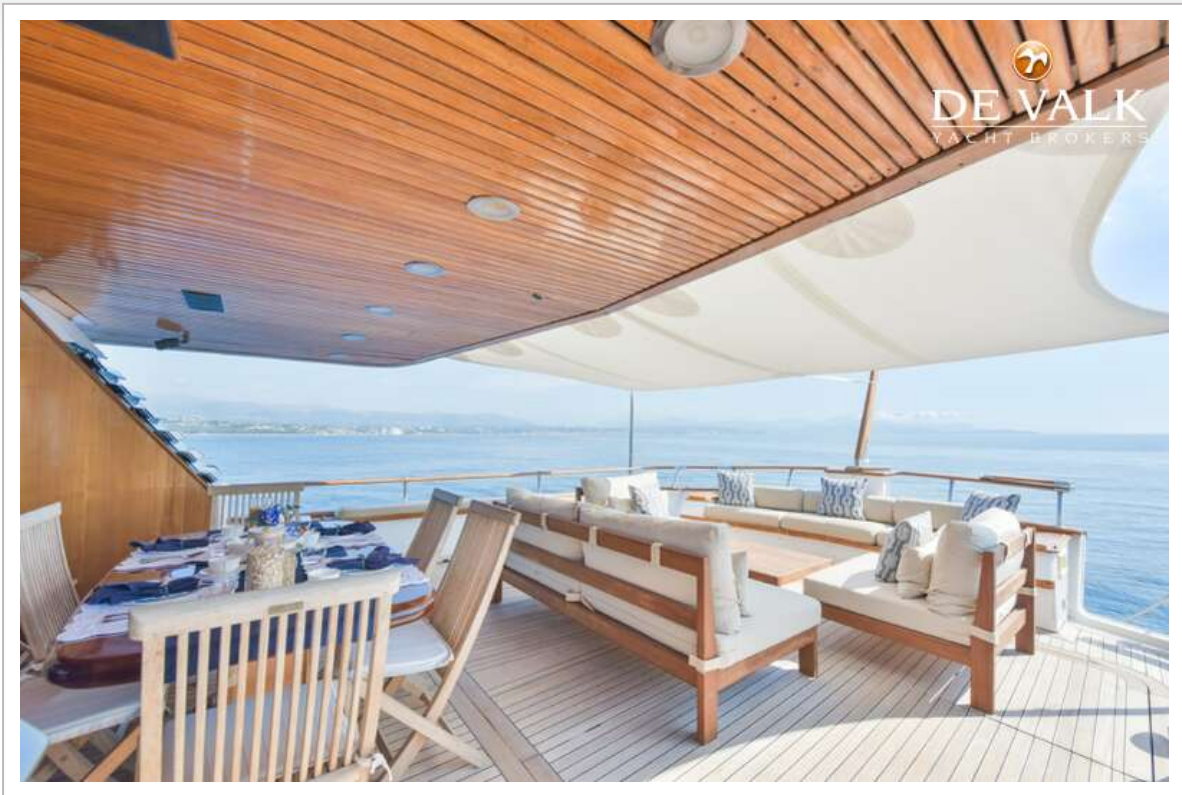
ja



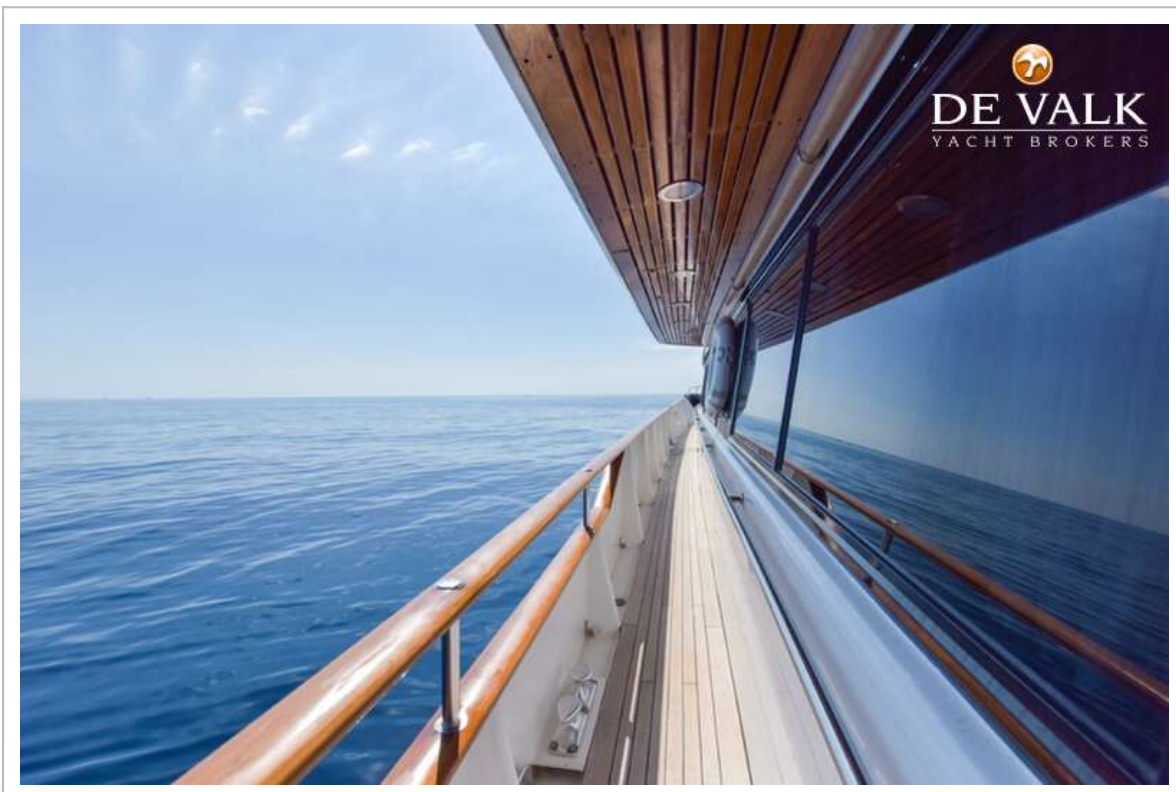
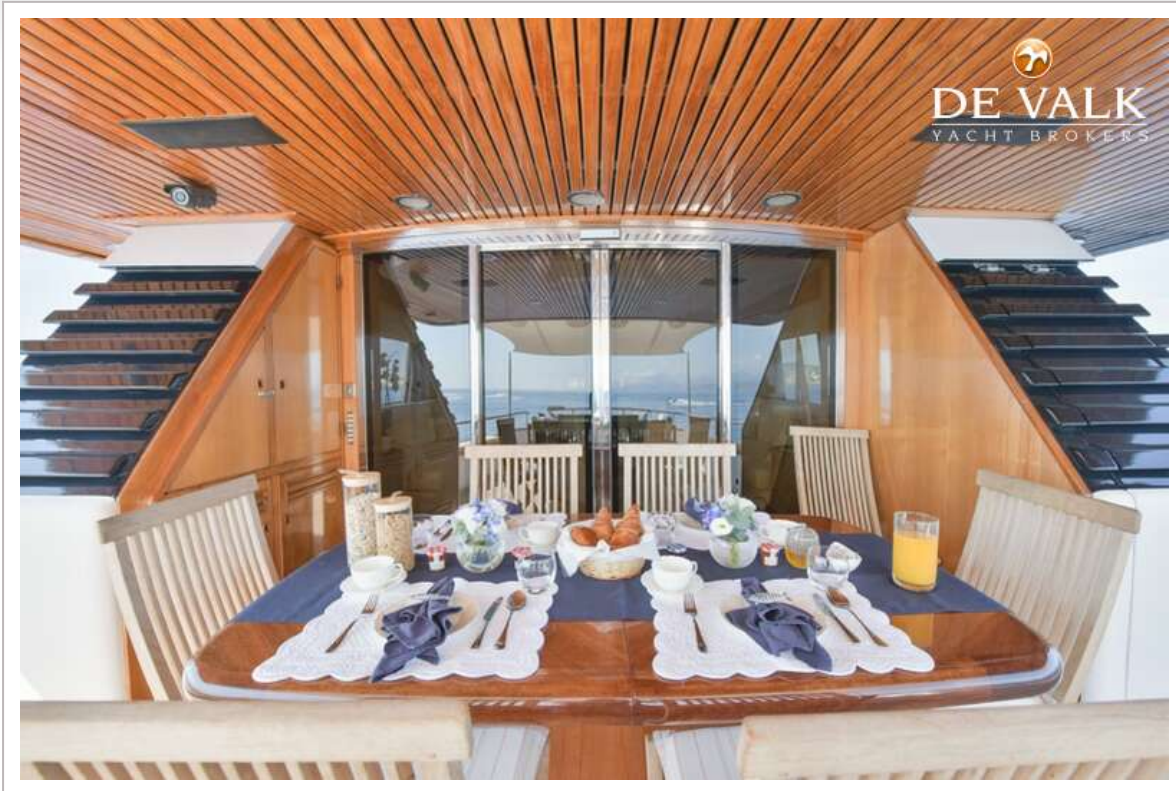
# W.A. SOUTER & SONS 34 METER ALLOY



# W.A. SOUTER & SONS 34 METER ALLOY



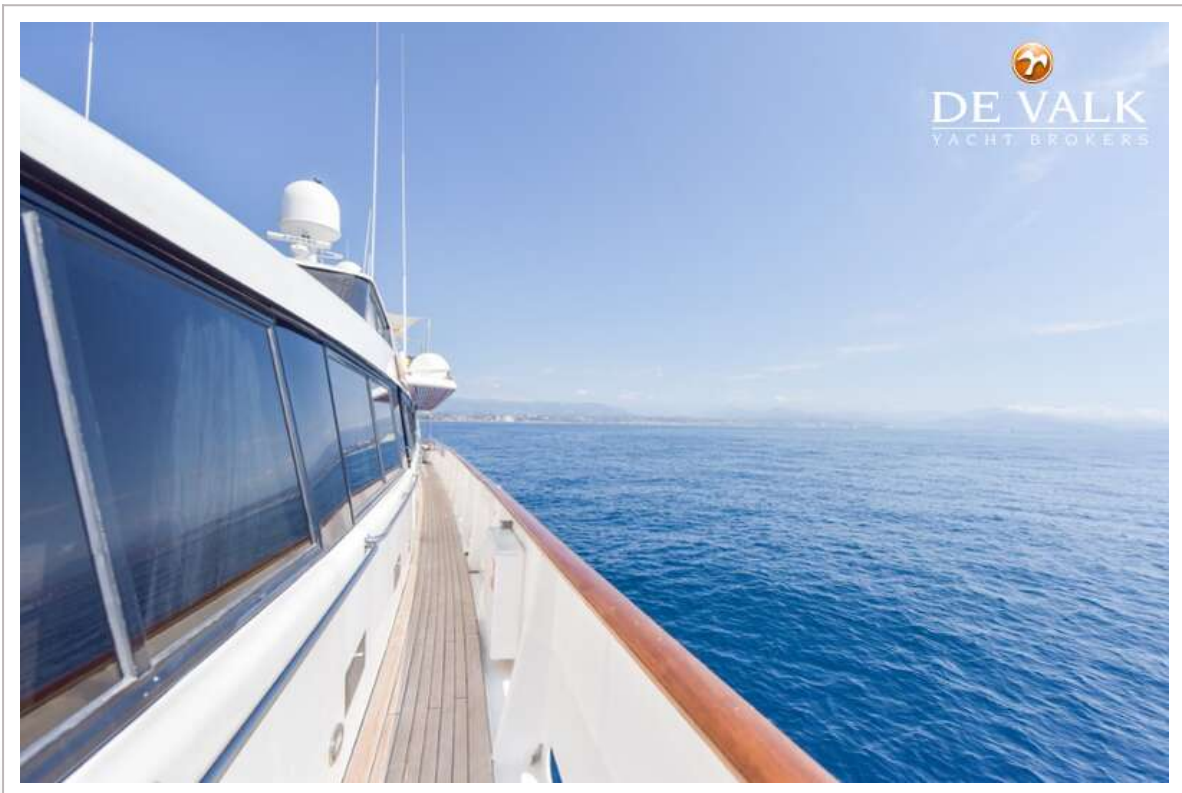
# W.A. SOUTER & SONS 34 METER ALLOY



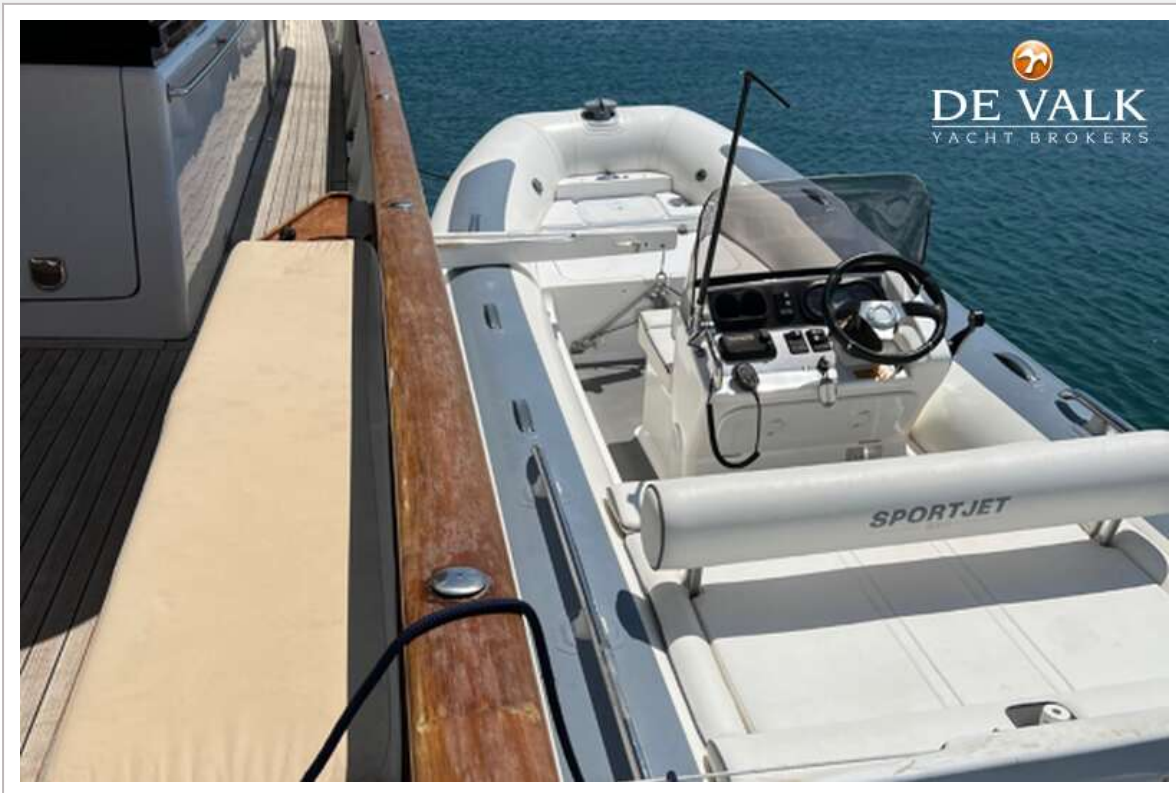
# W.A. SOUTER & SONS 34 METER ALLOY



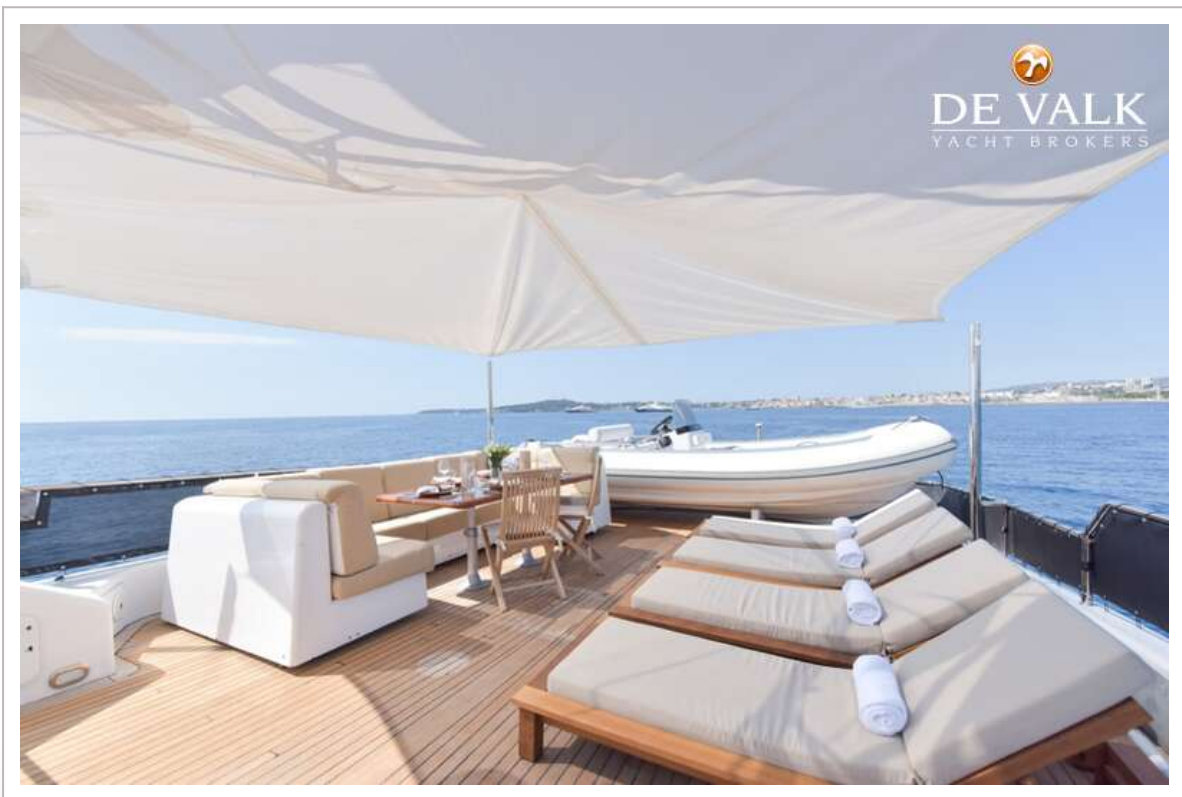
# W.A. SOUTER & SONS 34 METER ALLOY



# W.A. SOUTER & SONS 34 METER ALLOY



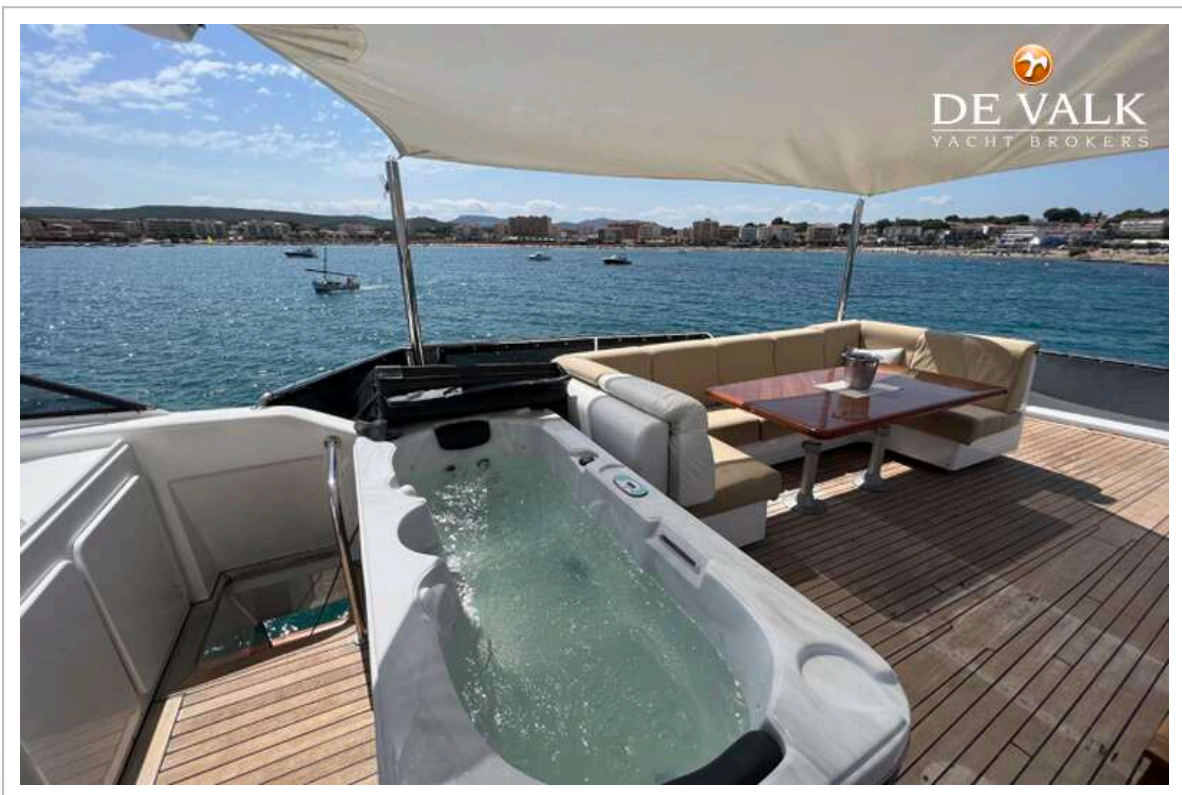
# W.A. SOUTER & SONS 34 METER ALLOY



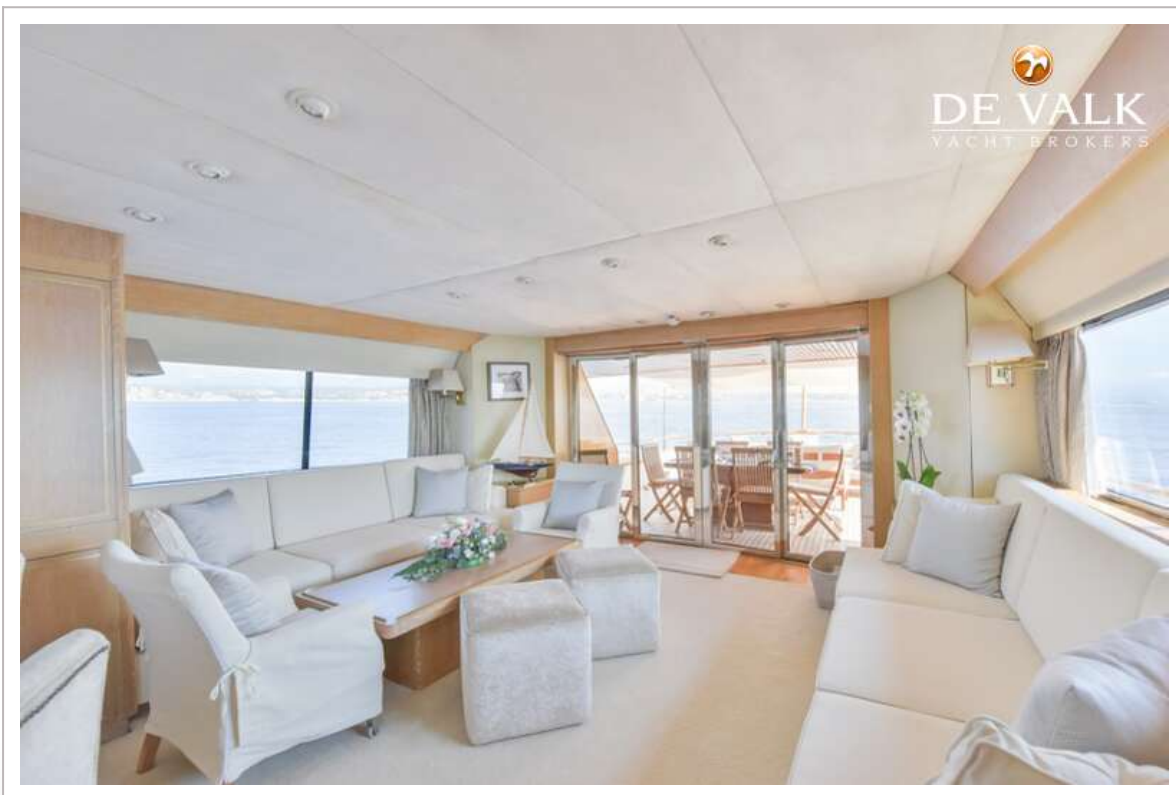
# W.A. SOUTER & SONS 34 METER ALLOY



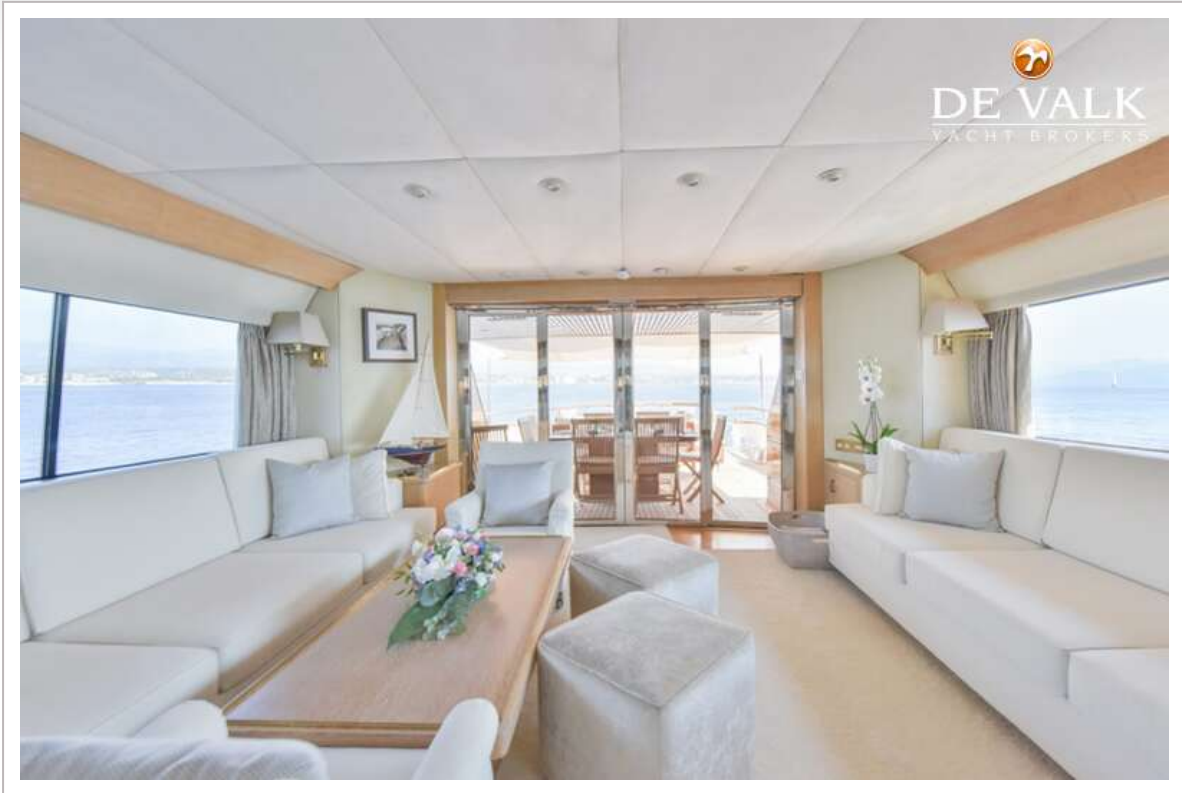
# W.A. SOUTER & SONS 34 METER ALLOY



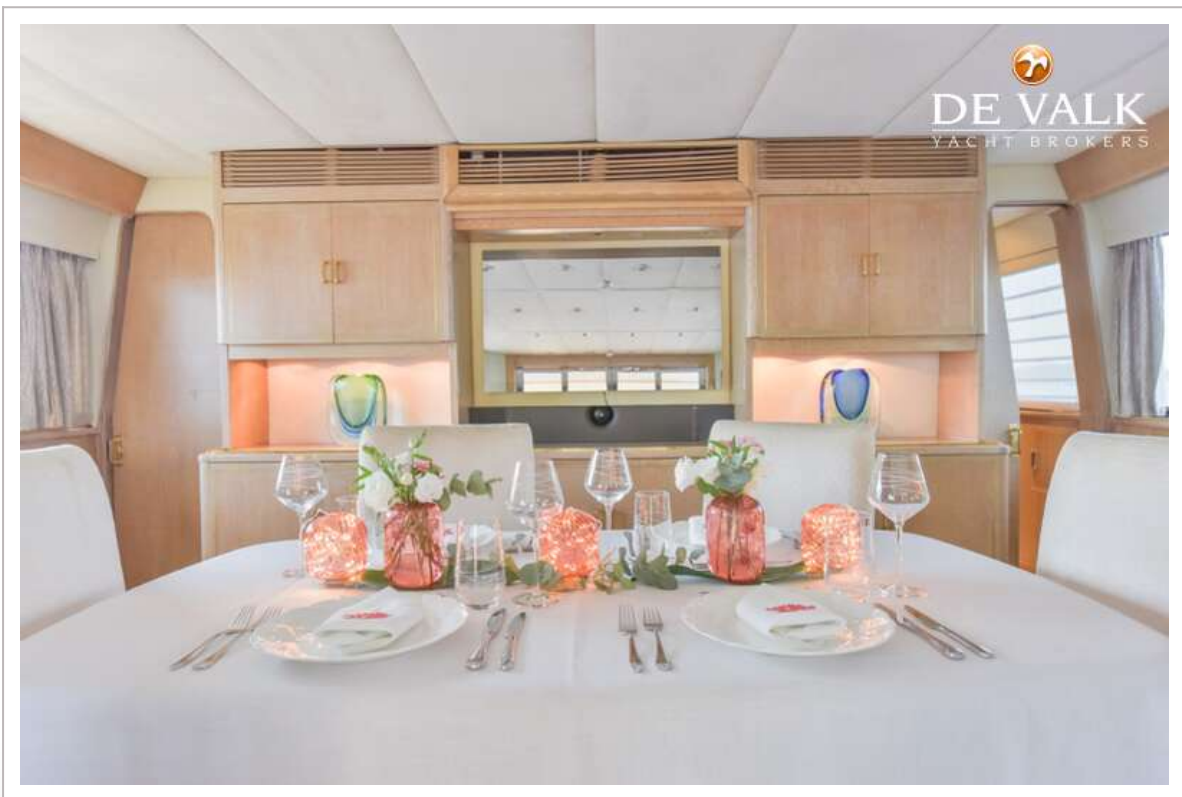
# W.A. SOUTER & SONS 34 METER ALLOY

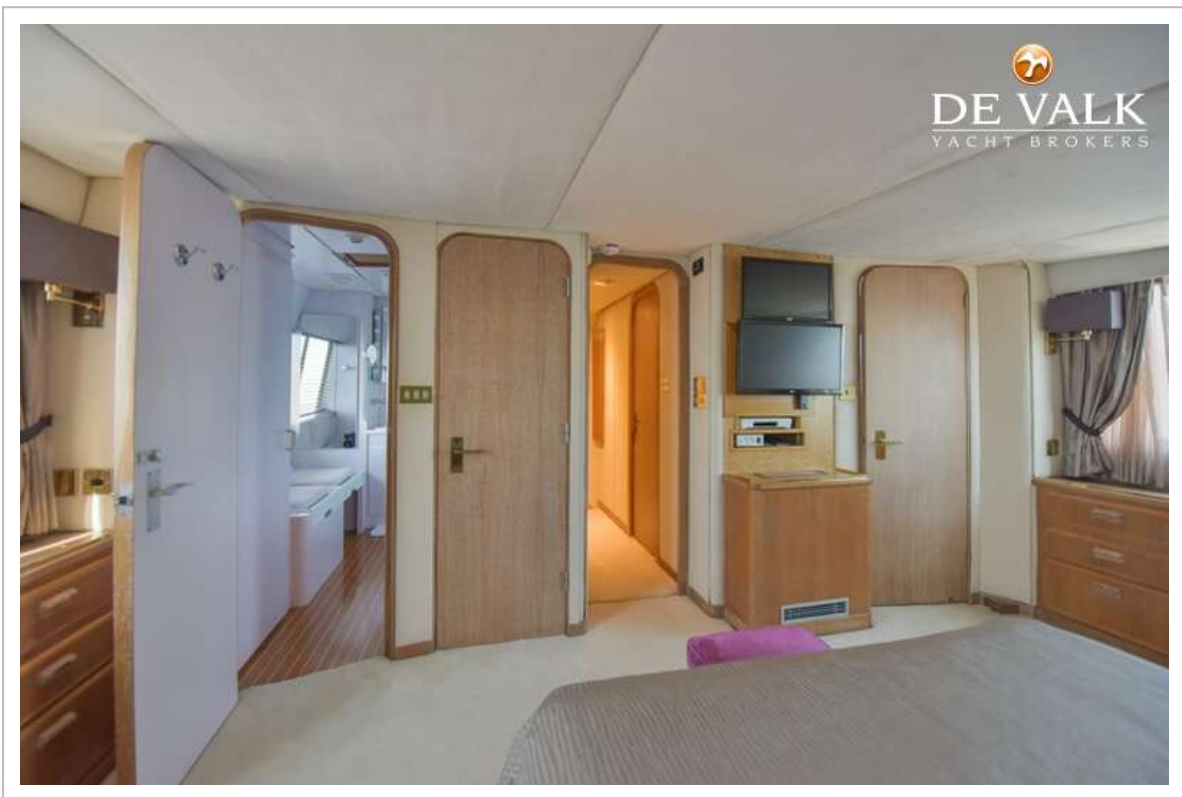


# W.A. SOUTER & SONS 34 METER ALLOY

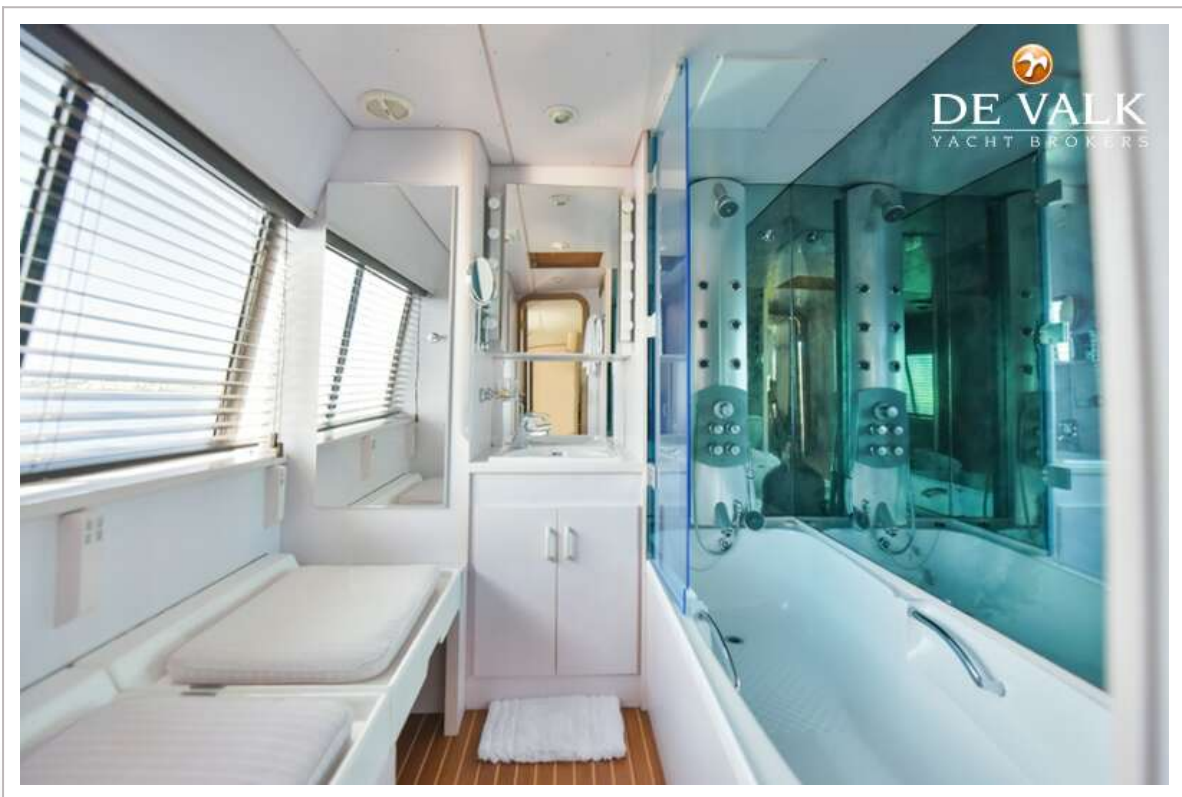
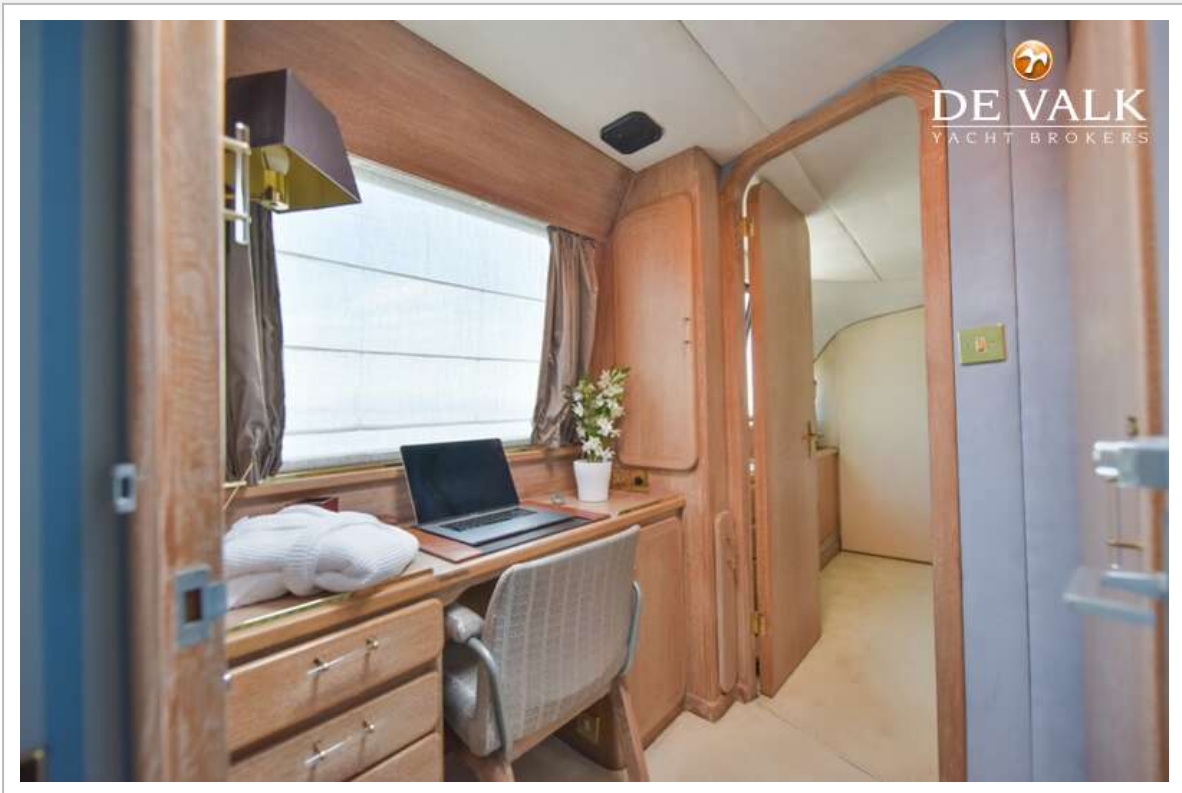


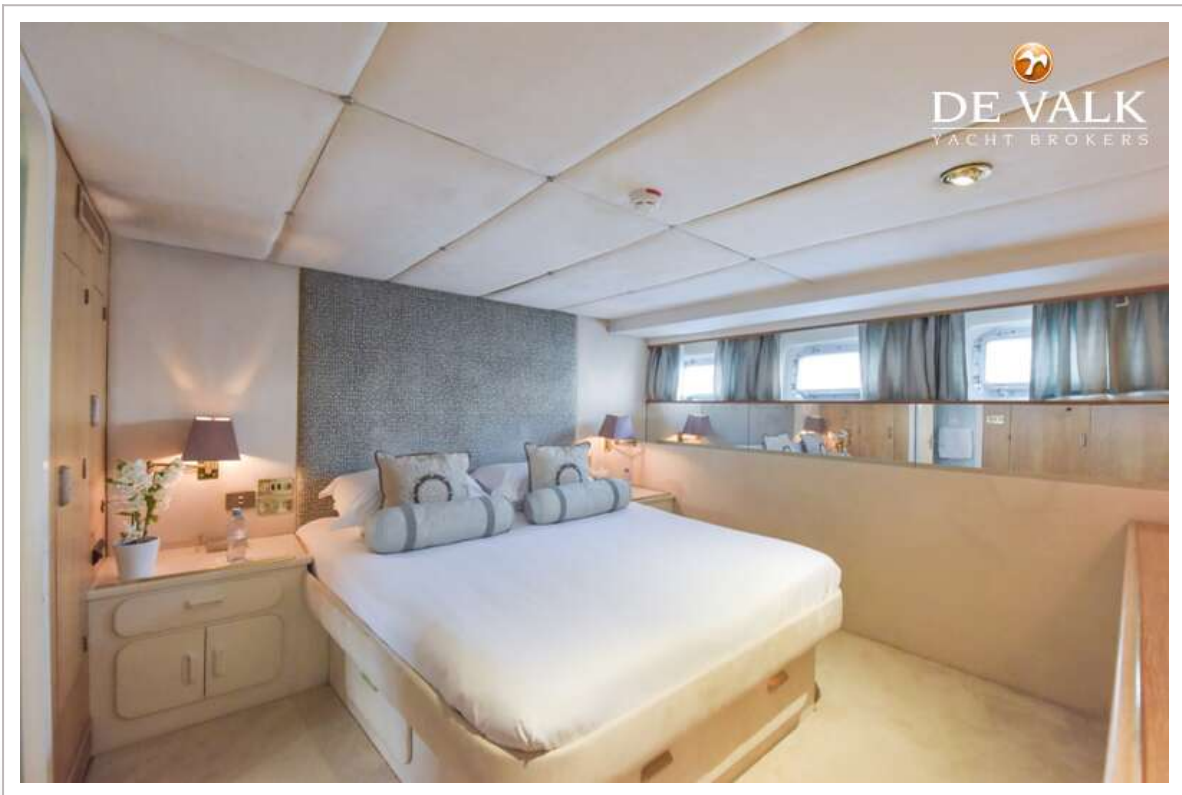
# W.A. SOUTER & SONS 34 METER ALLOY

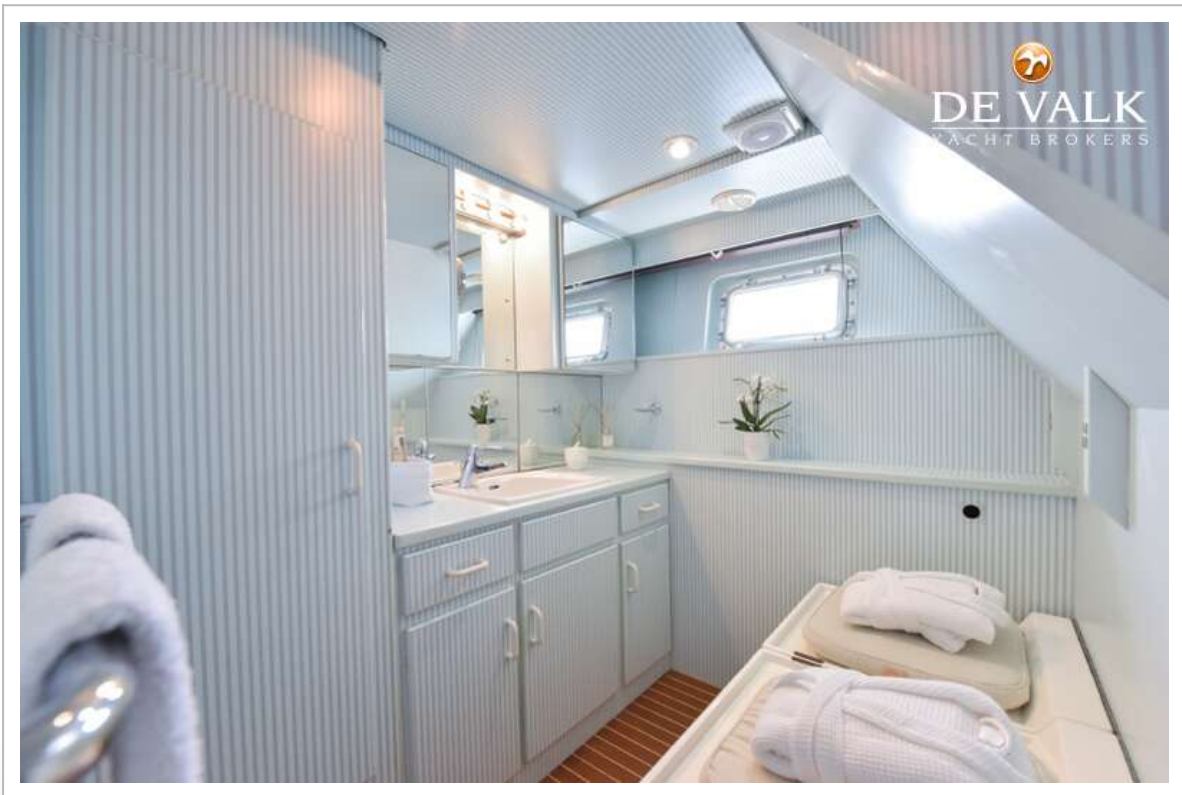




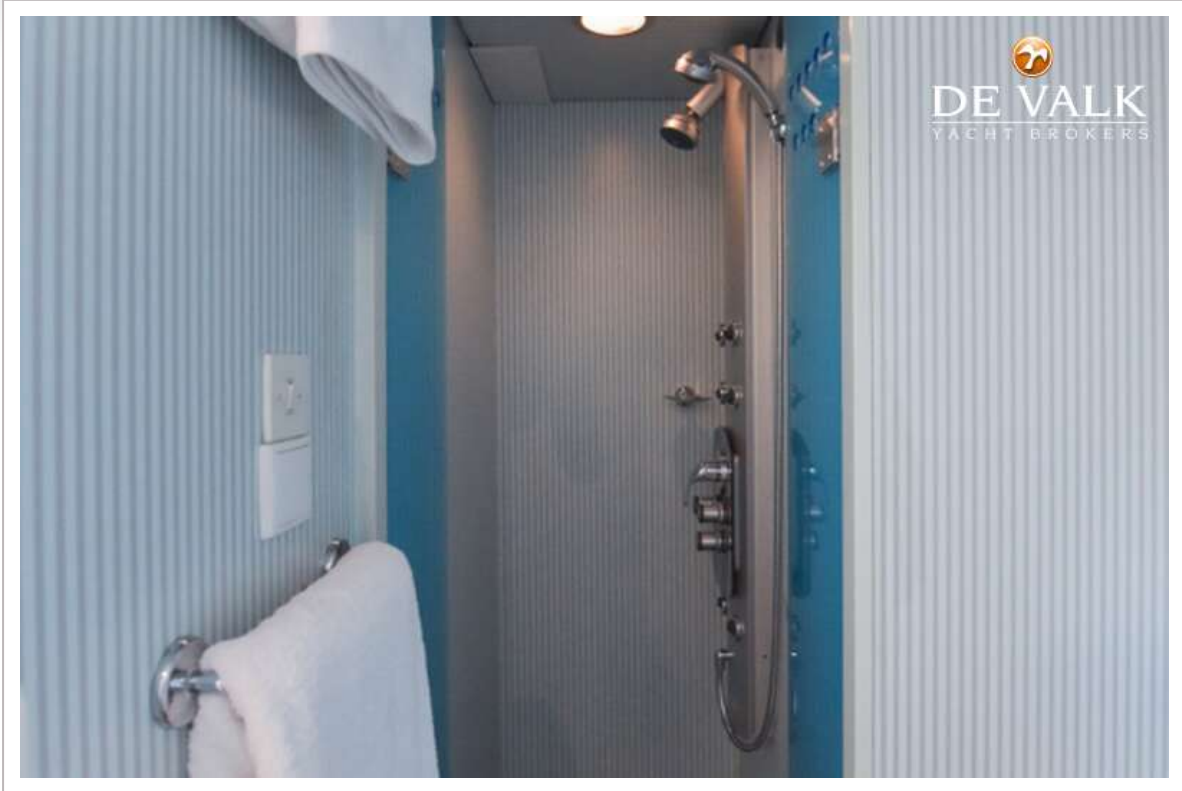
# W.A. SOUTER & SONS 34 METER ALLOY







# W.A. SOUTER & SONS 34 METER ALLOY



# W.A. SOUTER & SONS 34 METER ALLOY

