



## BAVARIA 44 VISION



DE VALK  
YACHT BROKERS

## VAN DE MAKELAAR

*Miha Spendal*

## SPECIFICATIES

|                   |                         |                      |                        |
|-------------------|-------------------------|----------------------|------------------------|
| <b>Afmetingen</b> | 12.99 x 4.39 x 1.80 (m) | <b>Bouwer</b>        | Bavaria Yachts         |
| <b>Bouwjaar</b>   | 2007                    | <b>Hutten</b>        | 3                      |
| <b>Materiaal</b>  | Polyester               | <b>Slaapplaatsen</b> | 6                      |
| <b>Motor(en)</b>  | 1 x Volvo D-2 75 diesel | <b>Pk/Kw</b>         | 75.00 (pk), 55.20 (kw) |
| <b>Vraagprijs</b> | € 145.000 (BTW Betaald) | <b>Ligplaats</b>     | bij verkoopkantoor     |

## CONTACT

|                |   |                 |                   |
|----------------|---|-----------------|-------------------|
| <b>Kantoor</b> | De Valk Istria  | <b>Telefoon</b> | +386 (1) 600 2704 |
| <b>Adres</b>   | (Marina Izola) Dantejeva Ulica 22<br>6310 Izola<br>SI | <b>E-mail</b>   | istria@devalk.nl  |

## DISCLAIMER

Hoewel er uiterste zorg besteed is aan de correctheid, volledigheid en actualiteit van onze informatie kunnen hieraan geen rechten worden ontleend.



## ALGEMEEN

|                                      |                         |
|--------------------------------------|-------------------------|
| <b>Model</b>                         | BAVARIA 44 VISION       |
| <b>Type</b>                          | zeiljacht               |
| <b>Lengte (m)</b>                    | 12,99                   |
| <b>Breedte (m)</b>                   | 4,39                    |
| <b>Diepgang (m)</b>                  | 1,80                    |
| <b>Stahoogte (m)</b>                 | 2,20                    |
| <b>Bouwjaar</b>                      | 2007                    |
| <b>Te waterlating</b>                | 2007                    |
| <b>Gebouwd door</b>                  | Bavaria Yachts          |
| <b>Land</b>                          | Duitsland               |
| <b>Ontwerper</b>                     | J&J                     |
| <b>Waterverplaatsing (t)</b>         | 9,48                    |
| <b>CE norm</b>                       | A                       |
| <b>Romp materiaal</b>                | polyester               |
| <b>Romp kleur</b>                    | wit Polished April 2026 |
| <b>Kiel type</b>                     | kiel met bulb           |
| <b>Materiaal opbouw</b>              | polyester               |
| <b>Dek materiaal</b>                 | polyester               |
| <b>Afwerking dek</b>                 | anti-slip profiel       |
| <b>Afwerking opbouw</b>              | anti-slip profiel       |
| <b>Afwerking kuip</b>                | teak                    |
| <b>Antifouling (jaar)</b>            | New April 2026          |
| <b>Dorades</b>                       | ja                      |
| <b>Raamlijsten</b>                   | aluminium               |
| <b>Patrijspoorten</b>                | aluminium               |
| <b>Brandstoftank (liter)</b>         | 210                     |
| <b>Inhoudsmeter (brandstoftank)</b>  | ja                      |
| <b>Drinkwatertank (liter)</b>        | kunststof 2 x 180       |
| <b>Inhoudsmeter (drinkwatertank)</b> | ja                      |
| <b>Vuilwatertank (liter)</b>         | kunststof 2 x 80        |



|                              |                  |
|------------------------------|------------------|
| Inhoudsmeter (vuilwatertank) | ja               |
| Stuurwiel                    | kettingbesturing |
| Noodhelmstok                 | ja               |

## ACCOMMODATIE

|                     |  |
|---------------------|--|
| Hutten              | 3  |
| Slaapplaatsen       | 6  |
| Salon               | ja   |
| Stahoogte salon (m) | 2,2  |
| Verwarming          | diesel hete lucht Webasto                    |
| Airco               | airco enkel werkend 8000 BTU, on shore power |
| Kaartentafel        | ja   |
| Ombouwbare kooi     | Saloon table can be lowered                  |
| Keuken              | ja   |
| Aanrechtblad        | kunststof                                    |
| Spoelbak            | roestvast staal                              |
| Kooktoestel         | gas  |
| Oven                | ja   |
| Koelkast            | ja   |
| Vriezer             | ja   |
| Warmwatersysteem    | 220V + motor                                 |
| Waterdruksysteem    | elektrisch                                   |
| Eigenaarshut        | tweepersoonsbed                              |
| Kledingkast         | hangend/lades/legplanken                     |
| Toilet              | en suite                                     |
| Toilet Systeem      | elektrisch New toilet 2025                   |
| Wasbak              | in de badkamer                               |
| Douche              | en suite                                     |
| Gastenhut 1         | tweepersoonsbed                              |
| Kledingkast         | hangend en legplanken                        |
| Badkamer            | apart  |



|                |                       |
|----------------|-----------------------|
| Toilet         | en suite              |
| Toilet systeem | handbediening         |
| Douche         | en suite              |
| Gastenhut 2    | tweepersoonsbed       |
| Kleerkast      | hangend en legplanken |
| Badkamer       | gedeeld               |
| Toilet         | gedeeld               |
| Toilet systeem | handbediening         |
| Douche         | gedeeld               |

## MOTOR(EN)

|                         |  |
|-------------------------|--|
| Aantal motoren          | 1  |
| Merk                    | Volvo  |
| Type                    | D-2 75                                       |
| Pk                      | 75   |
| kW                      | 55.20  |
| Brandstof               | diesel                                       |
| Geïnstalleerd in jaar   | 2007   |
| Gereviseerd in jaar     | New turbine 2024, regular service April 2026 |
| Motoruren               | 923  |
| Koelsysteem motor       | indirecte warmtewisselaar                    |
| Aandrijving             | sail-drive                                   |
| Boegschroef             | elektrisch                                   |
| Type schroef            | klap 3-blade                                 |
| Handlenspomp            | ja   |
| Elektrische lenspomp    | ja   |
| Elektrische installatie | ja   |
| Accu's                  | ja   |
| Startaccu               | ja   |
| Lichtaccu               | New service batteries 2024                   |
| Boegschroefaccu         | New 2025 with its own charger                |



|             |                 |
|-------------|-----------------|
| Acculader   | ja              |
| Zonnecellen | 220 W, new 2025 |
| Walstroom   | met kabel       |

## NAVIGATIE

|                         |                                      |
|-------------------------|--------------------------------------|
| Kompas                  | ja                                   |
| Electrisch kompas       | ja                                   |
| Dieptemeter/log         | ja                                   |
| Windmeetset             | ja                                   |
| Marifoon                | New 2025, SIMRAD VHF RS 40B with AIS |
| Autopiloot              | ja                                   |
| Roerstand aanwijzer     | ja                                   |
| GPS                     | ja                                   |
| Plotter                 | ja                                   |
| Elektronische kaart(en) | ja                                   |
| AIS transceiver         | ja                                   |
| Radio ontvanger         | ja                                   |
| Navigatieverlichting    | LED                                  |

## UITRUSTING

|                |                        |
|----------------|------------------------|
| Buiskap        | Serviced December 2025 |
| Bimini         | Serviced December 2025 |
| Kuipkussens    | ja                     |
| Zwemtrap       | roestvast staal        |
| Loopplank      | ja                     |
| Dekdouche      | ja                     |
| Anker          | CQR ploegschaar        |
| Ankerketting   | 50m                    |
| Anker 2        | 15kg with anchor rope  |
| Ketting teller | With remote control    |
| Ankerlier      | elektrisch             |



|                          |                    |
|--------------------------|--------------------|
| <b>Bijboot</b>           | ja                 |
| <b>Buitenboordmotor</b>  | Torqueedo electric |
| <b>Hekstoel</b>          | ja                 |
| <b>Preekstoel</b>        | ja                 |
| <b>Reddingsvlot</b>      | ja                 |
| <b>Zwemvesten</b>        | ja                 |
| <b>Veiligheidsharnas</b> | ja                 |
| <b>Stootkussens</b>      | ja                 |
| <b>Landvasten</b>        | ja                 |
| <b>Radio-cd speler</b>   | ja                 |
| <b>Brandblusser</b>      | ja                 |

## TUIGAGE

|                             |                    |
|-----------------------------|--------------------|
| <b>Tuigage</b>              | fractioneel        |
| <b>Merk mast</b>            | Seldén             |
| <b>Materiaal mast</b>       | aluminium gespoten |
| <b>Grootzeil</b>            | In-mast furling    |
| <b>Genua I</b>              | ja                 |
| <b>Genua rolreefsysteem</b> | ja                 |
| <b>Gennaker</b>             | ja                 |
| <b>Genua schootlieren</b>   | 2 Electric         |
| <b>Vallieren</b>            | 2 Manual           |
| <b>Spinnaker lieren</b>     | 2 Manual           |



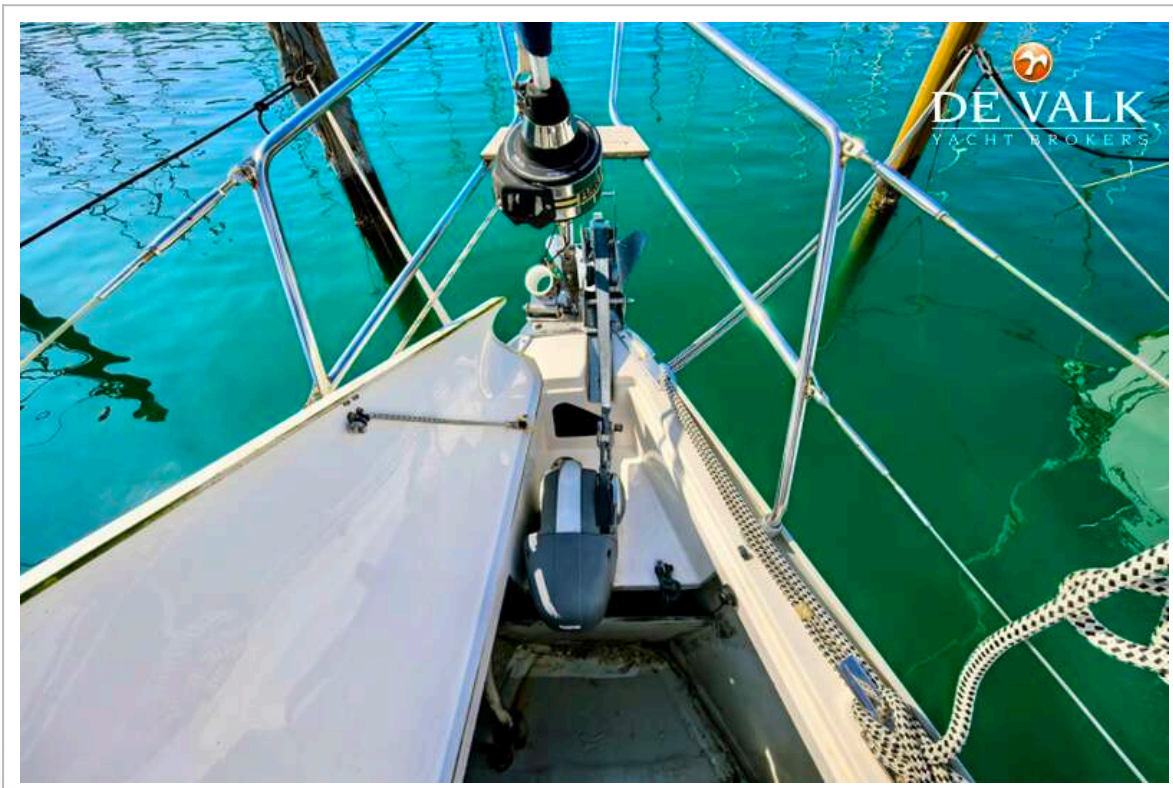
# BAVARIA 44 VISION



# BAVARIA 44 VISION



# BAVARIA 44 VISION



# BAVARIA 44 VISION



# BAVARIA 44 VISION



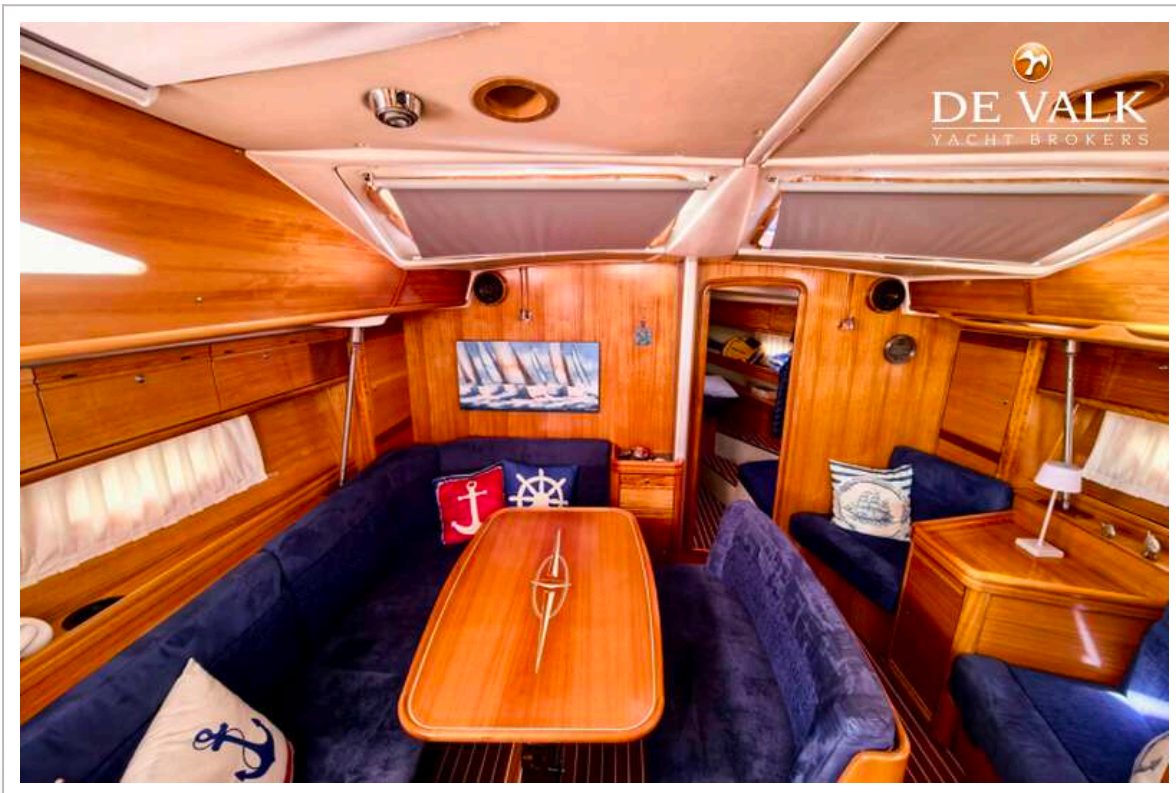
# BAVARIA 44 VISION



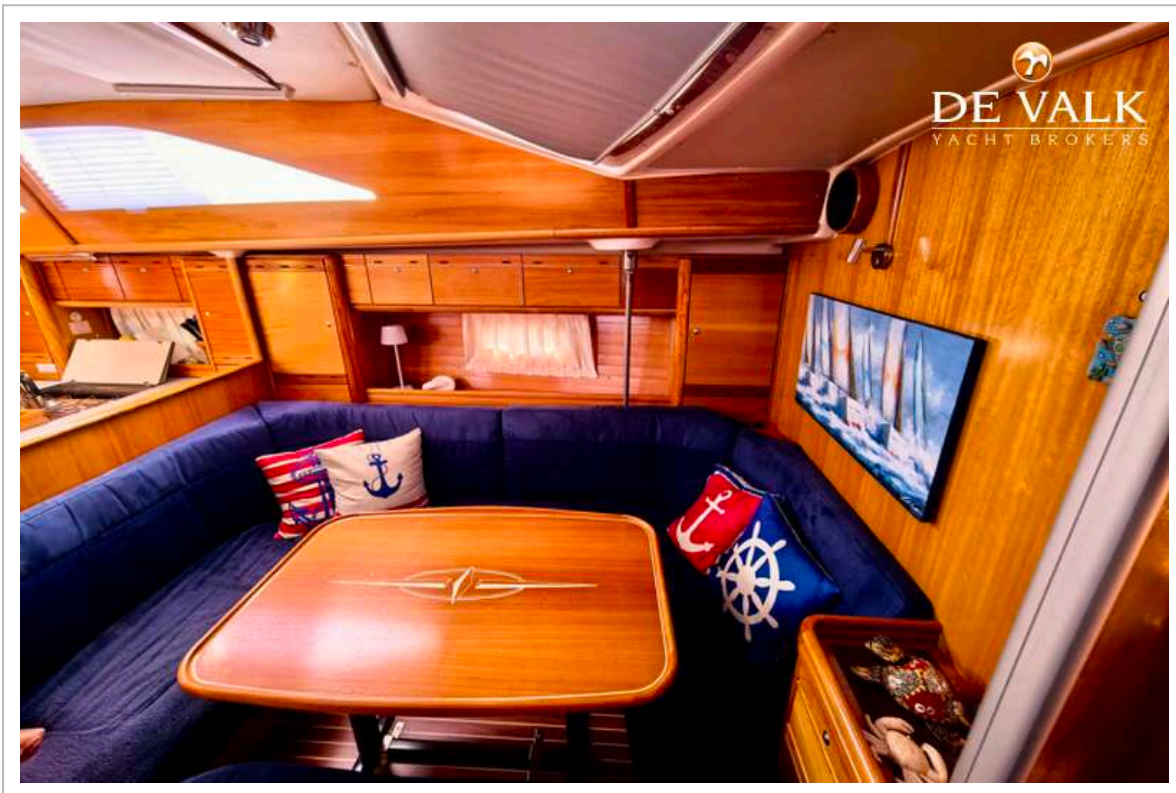
# BAVARIA 44 VISION



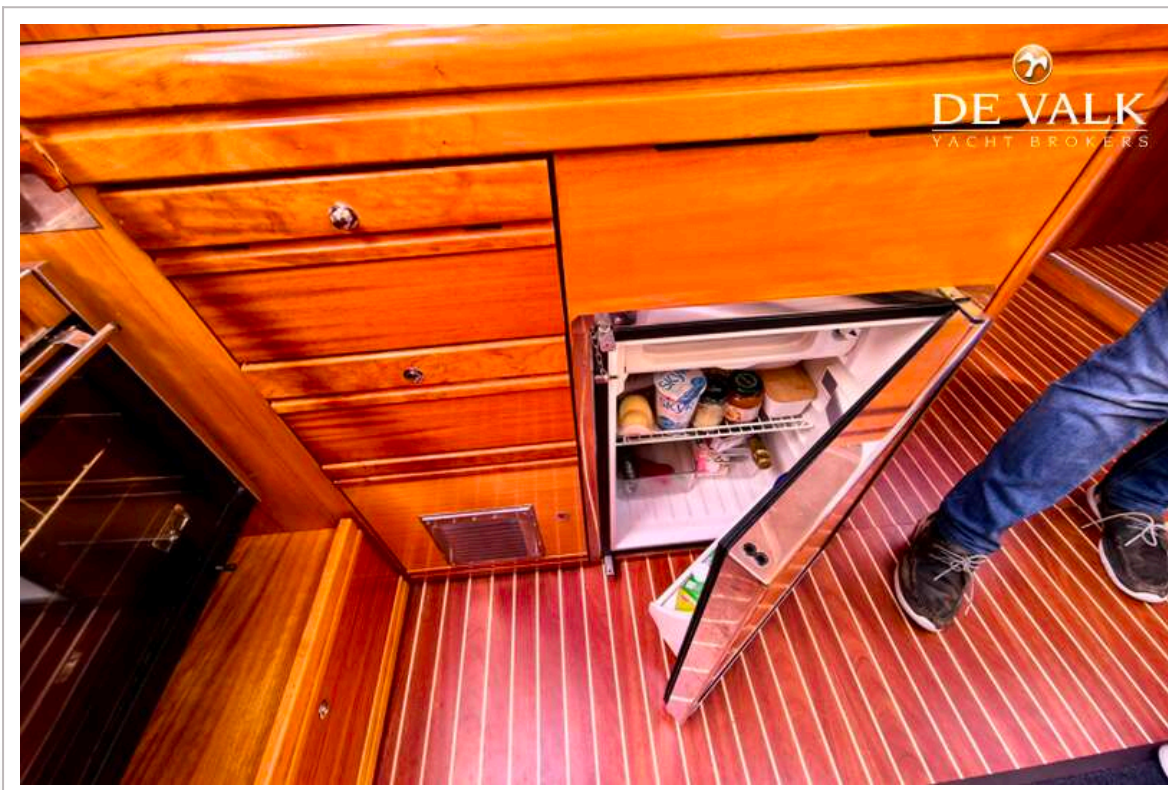
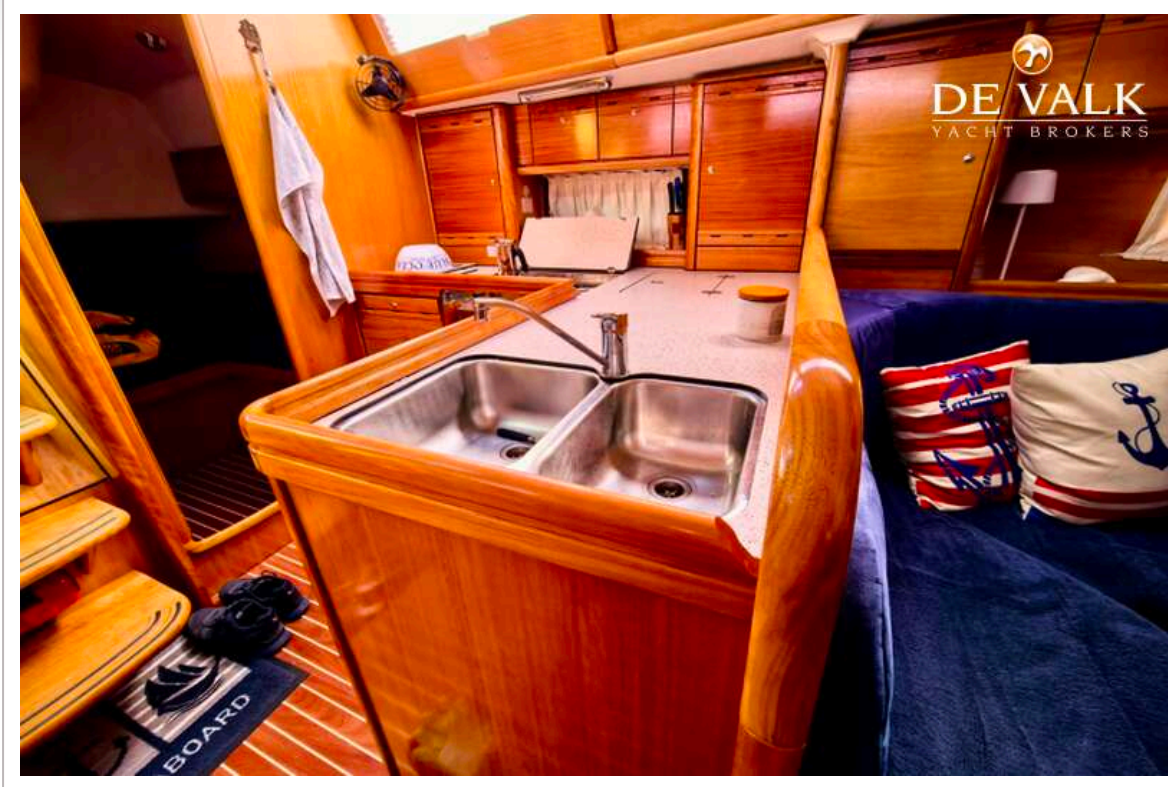
# BAVARIA 44 VISION



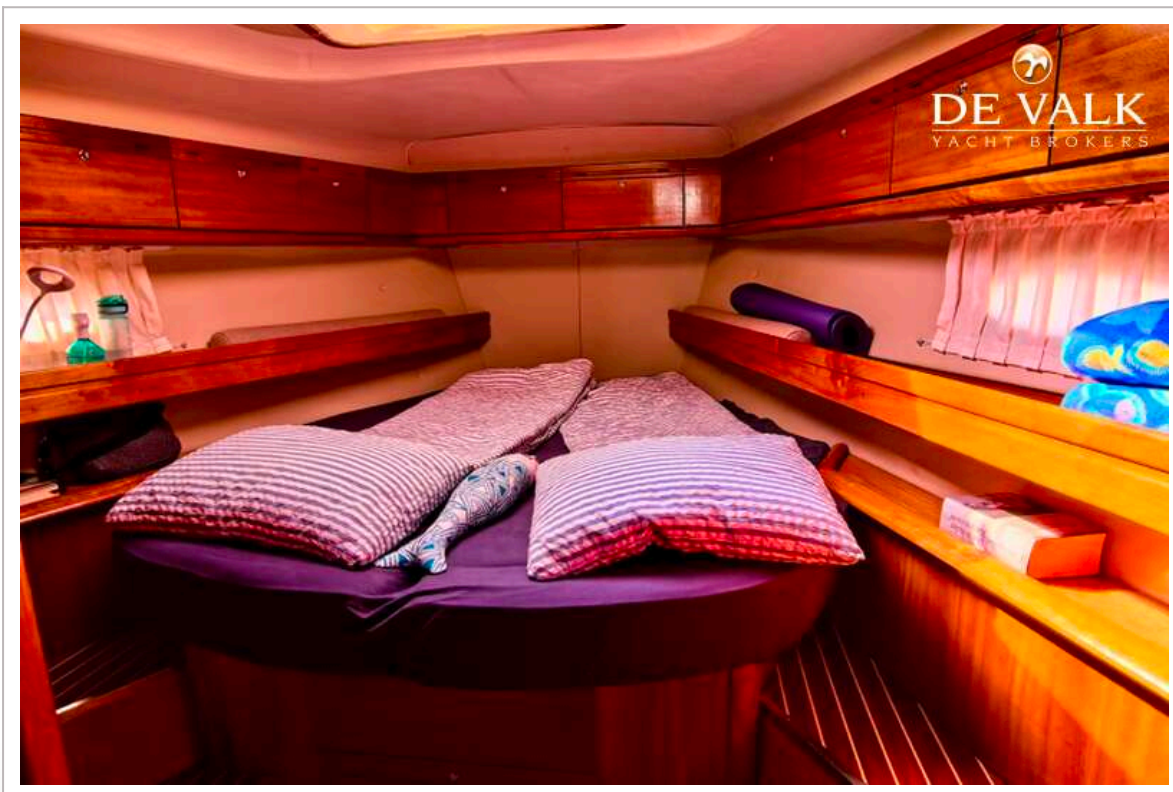
# BAVARIA 44 VISION



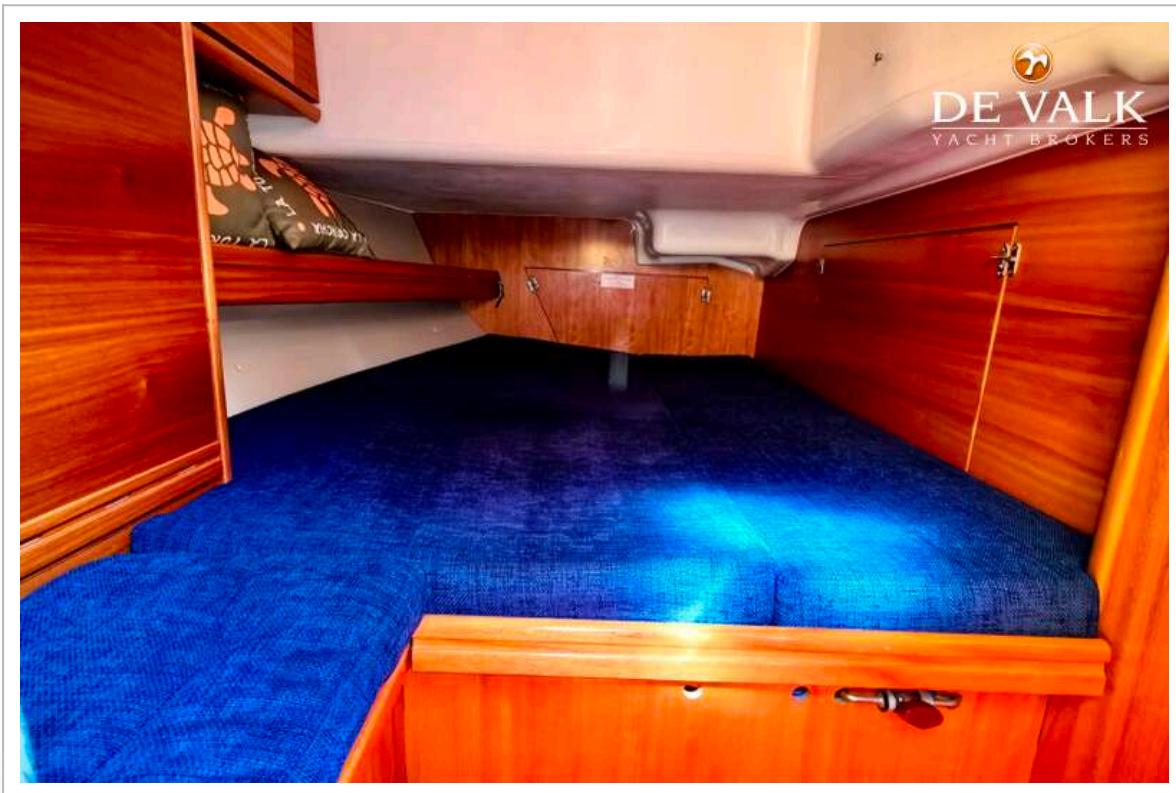
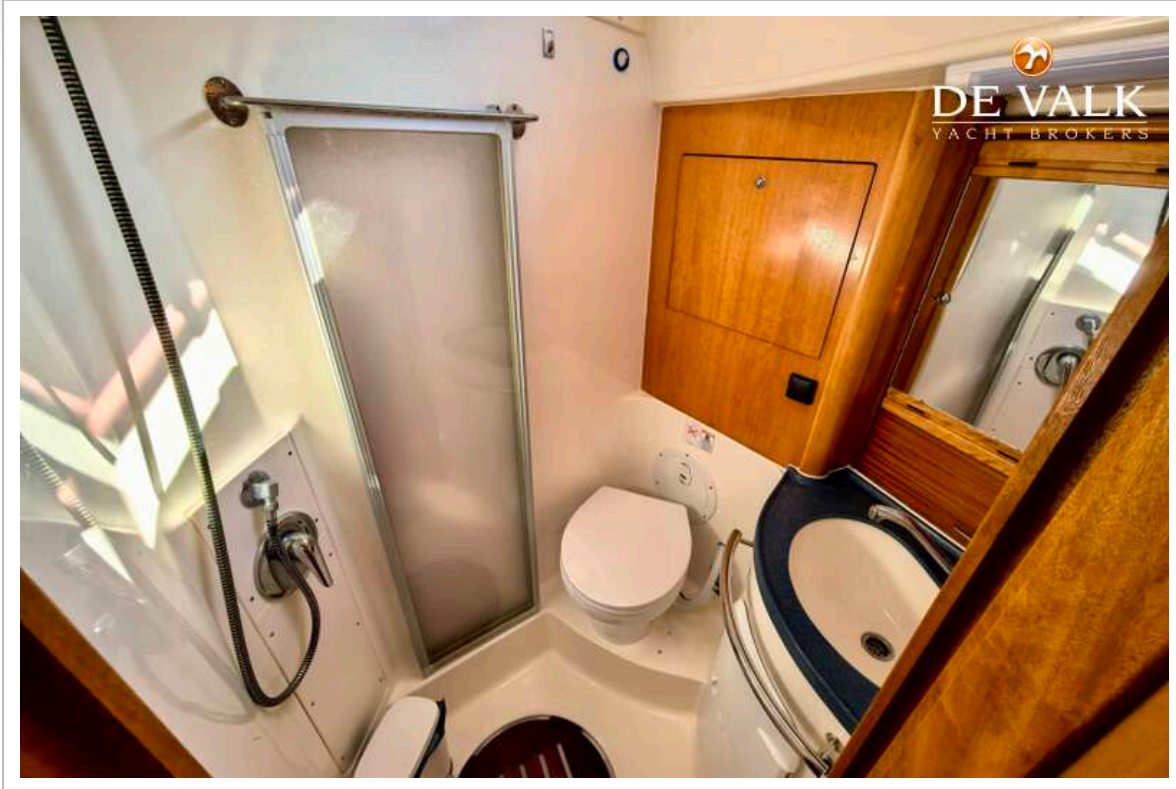
# BAVARIA 44 VISION



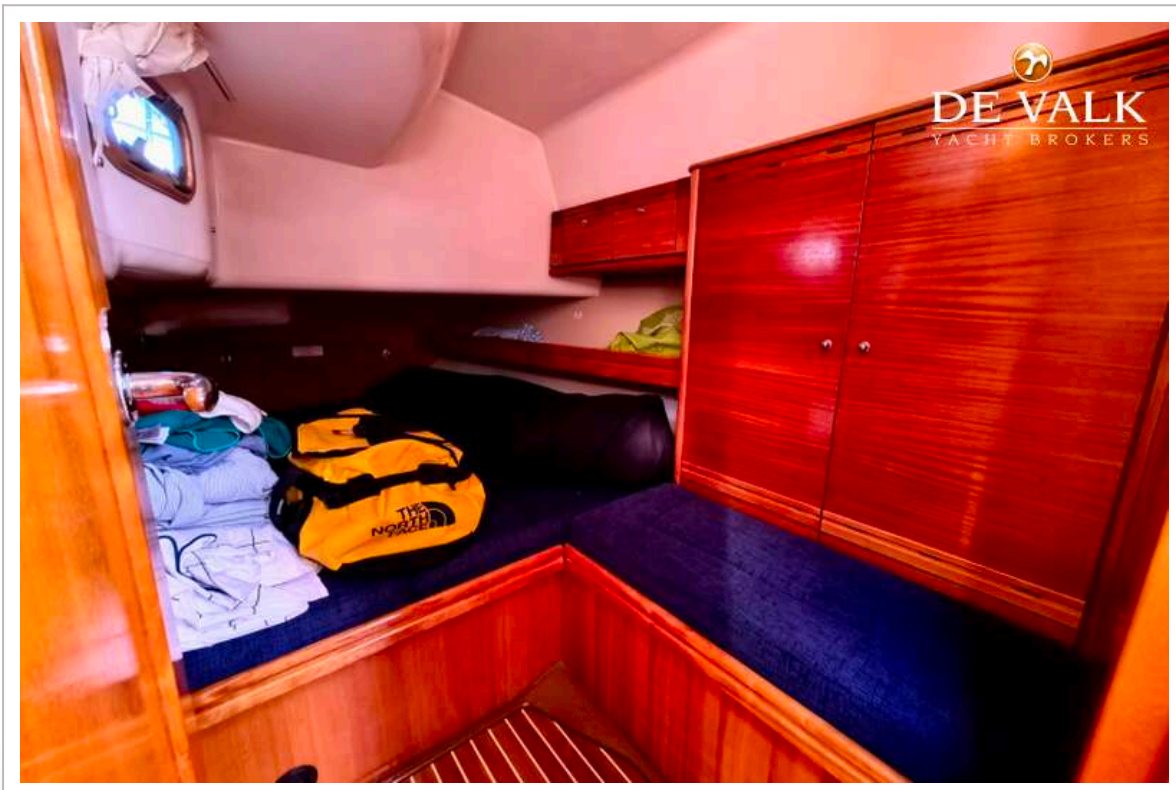
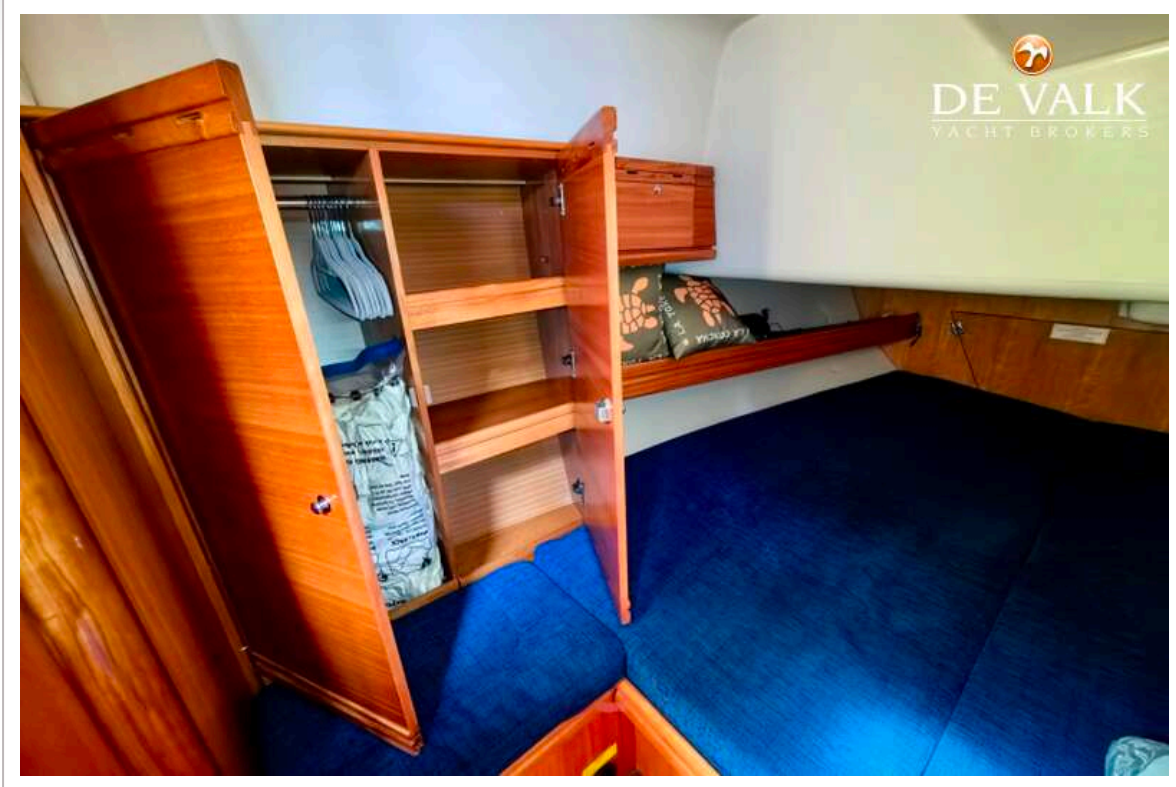
# BAVARIA 44 VISION



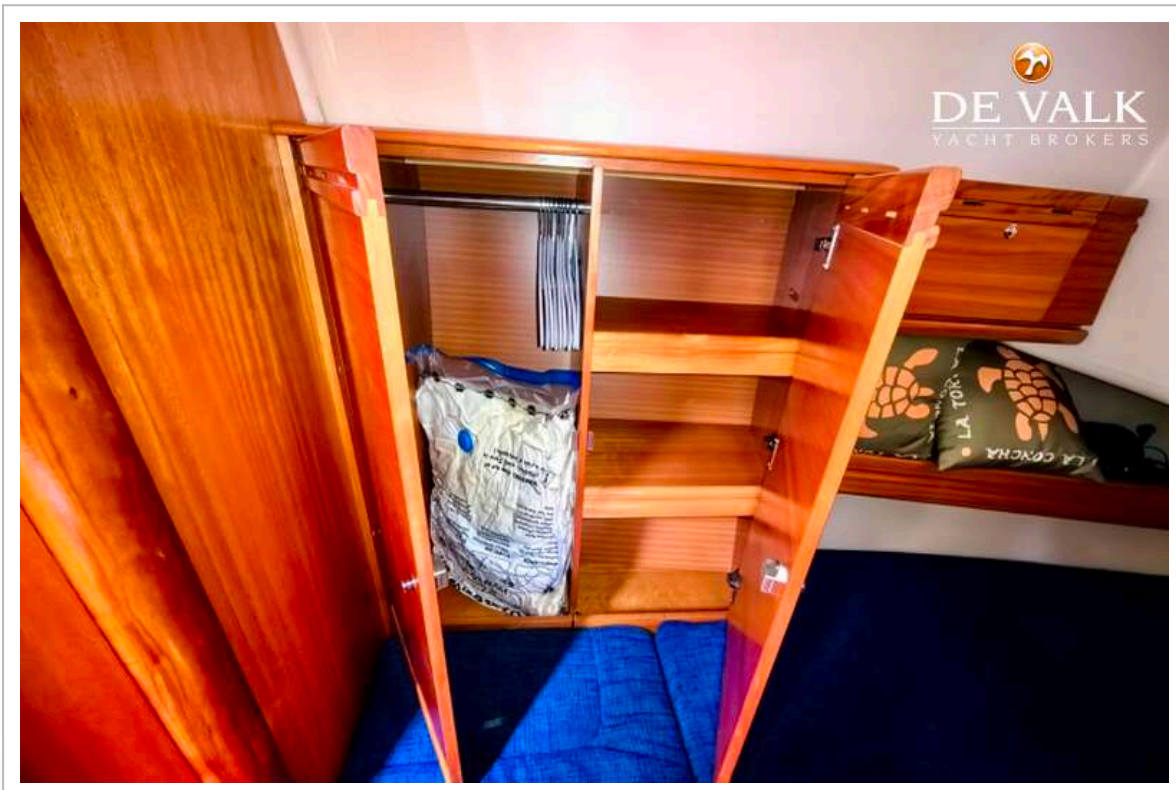
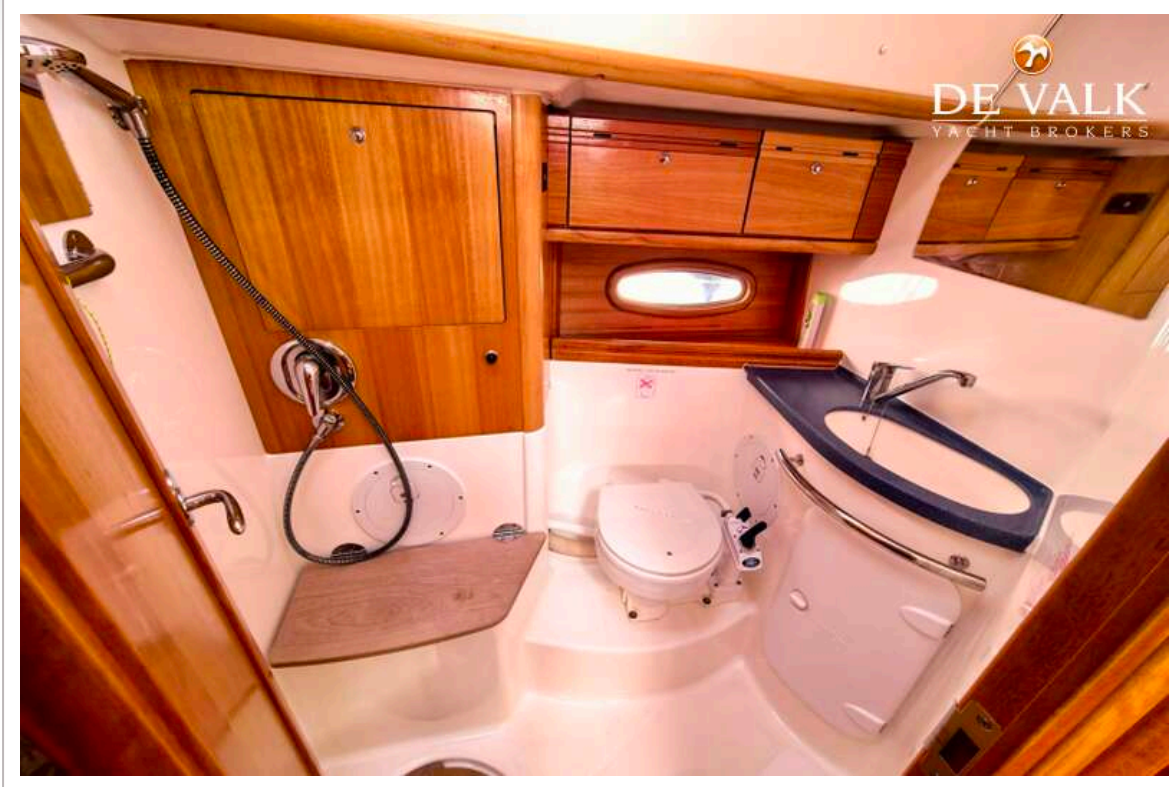
# BAVARIA 44 VISION



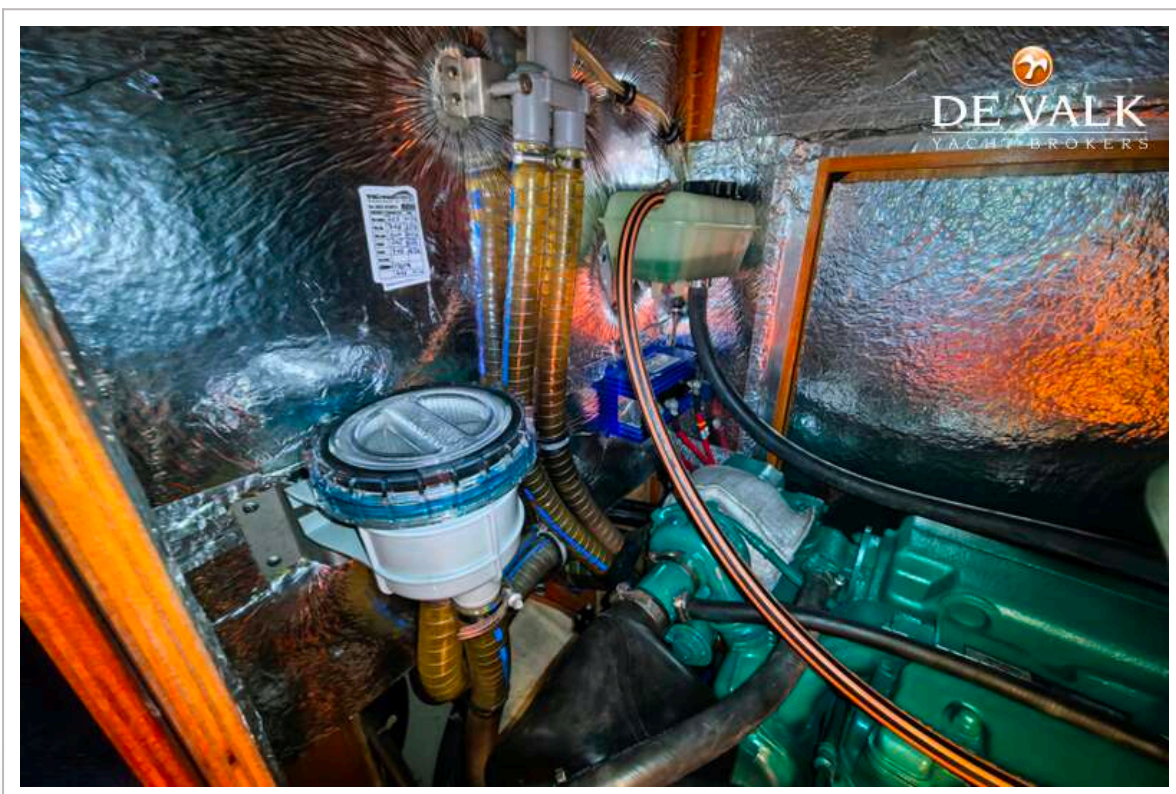
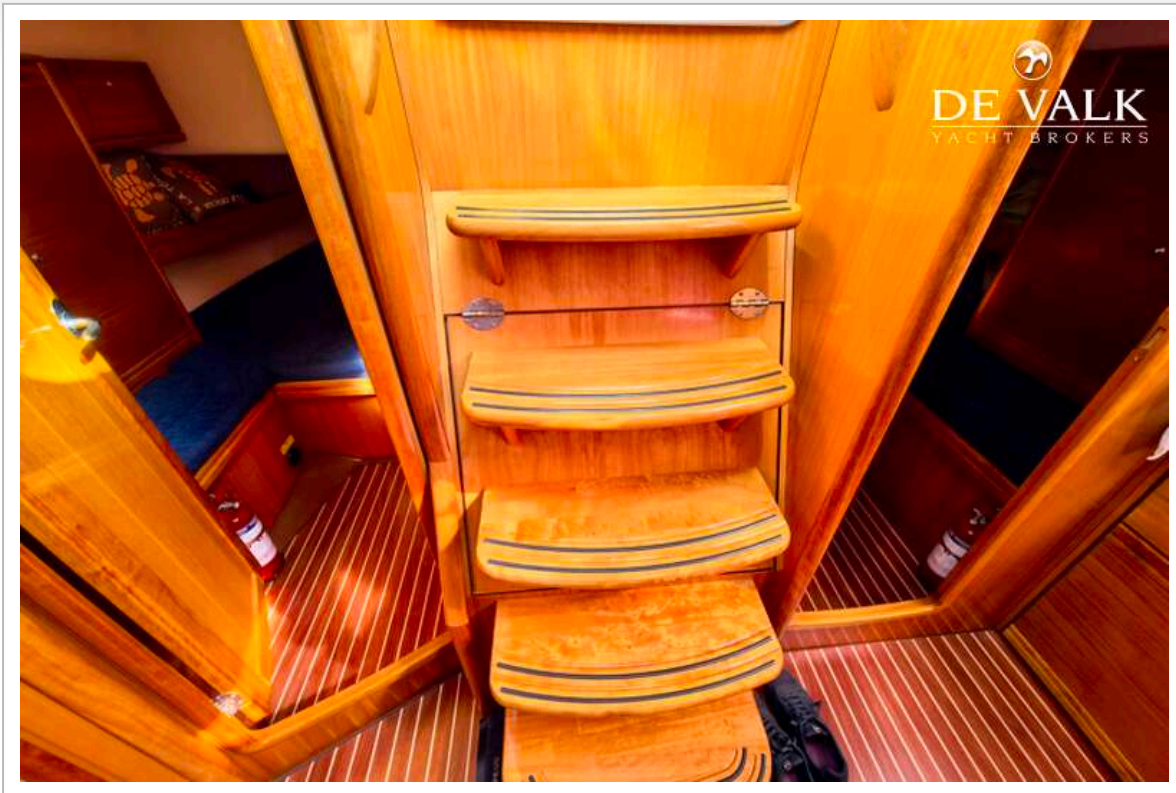
# BAVARIA 44 VISION



# BAVARIA 44 VISION



# BAVARIA 44 VISION



# BAVARIA 44 VISION

