



DE VALK  
YACHT BROKERS



BENETEAU OCEANIS 60



DE VALK  
YACHT BROKERS

# BENETEAU OCEANIS 60

## VAN DE MAKELAAR

*Oliver Stehula*

## SPECIFICATIES

|                   |                              |                      |                          |
|-------------------|------------------------------|----------------------|--------------------------|
| <b>Afmetingen</b> | 18.95 x 0.00 x 2.20 (m)      | <b>Bouwer</b>        | Beneteau                 |
| <b>Bouwjaar</b>   | 2023                         | <b>Hutten</b>        | 3                        |
| <b>Materiaal</b>  | Polyester                    | <b>Slaapplaatsen</b> |                          |
| <b>Motor(en)</b>  | 1 x Yanmar 4LV diesel        | <b>Pk/Kw</b>         | 150.00 (pk), 110.40 (kw) |
| <b>Vraagprijs</b> | € 949.000 (BTW Niet betaald) | <b>Ligplaats</b>     | bij verkoopkantoor       |

## CONTACT

|                |                                                                        |                 |                  |
|----------------|------------------------------------------------------------------------|-----------------|------------------|
| <b>Kantoor</b> | De Valk Palma                                                          | <b>Telefoon</b> | +34 971 40 29 11 |
| <b>Adres</b>   | Port. Cala Nova, Avda. Joan Miro, 327<br>07015 Palma de Mallorca<br>ES | <b>E-mail</b>   | palma@devalk.nl  |

## DISCLAIMER

Hoewel er uiterste zorg besteed is aan de correctheid, volledigheid en actualiteit van onze informatie kunnen hieraan geen rechten worden ontleend.



## ALGEMEEN

|                                      |                         |
|--------------------------------------|-------------------------|
| <b>Model</b>                         | BENETEAU OCEANIS 60     |
| <b>Type</b>                          | zeiljacht               |
| <b>Lengte (m)</b>                    | 18,95                   |
| <b>Diepgang (m)</b>                  | 2,20                    |
| <b>Bouwjaar</b>                      | 2023                    |
| <b>Gebouwd door</b>                  | Beneteau                |
| <b>Land</b>                          | Frankrijk               |
| <b>Ontwerper</b>                     | Lorenzo Argento         |
| <b>Waterverplaatsing (t)</b>         | 22,5                    |
| <b>Ballast (ton)</b>                 | gietijzer 5,6           |
| <b>CE norm</b>                       | A                       |
| <b>Romp materiaal</b>                | polyester               |
| <b>Romp kleur</b>                    | wit                     |
| <b>Rompvorm</b>                      | knikspant               |
| <b>Kiel type</b>                     | Shallow-draft fin keel  |
| <b>Materiaal opbouw</b>              | polyester               |
| <b>Dek materiaal</b>                 | teak                    |
| <b>Afwerking dek</b>                 | teak                    |
| <b>Afwerking kuip</b>                | teak                    |
| <b>Antifouling (jaar)</b>            | 2025                    |
| <b>Raammateriaal</b>                 | polycarbonaat           |
| <b>Dekluik</b>                       | 5x                      |
| <b>Patrijspoorten</b>                | kunststof 6x portlights |
| <b>Brandstoftank (liter)</b>         | aluminium 2x 250        |
| <b>Inhoudsmeter (brandstoftank)</b>  | Ship Control System     |
| <b>Drinkwatertank (liter)</b>        | kunststof 4x 200l       |
| <b>Inhoudsmeter (drinkwatertank)</b> | Ship Control System     |
| <b>Vuilwatertank (liter)</b>         | kunststof 3x 60l        |
| <b>Inhoudsmeter (vuilwatertank)</b>  | Ship Control System     |
| <b>Vuilwatertank afvoer</b>          | dekafzuigpunt + ow lijn |



|              |                                                       |
|--------------|-------------------------------------------------------|
| Stuurwiel    | Chain with wire, double, stainless steel with leather |
| Noodhelmstok | ja                                                    |

## ACCOMMODATIE

|                         |                                                                  |
|-------------------------|------------------------------------------------------------------|
| Hutten                  | 3                                                                |
| Bemanningshut           | Skipper cabin replaced the sail locker of the foredeck           |
| Bemanning slaappleatsen | One                                                              |
| Interieur               | Alpikord oak                                                     |
| Vloer                   | Alpikord oak floorings                                           |
| Salon                   | Long U-shaped bench seat and one Sofa facing the saloon, leather |
| Stahoogte salon (m)     | 2,02                                                             |
| Airco                   | airco omkeerbaar 56.000 BTU                                      |
| Kaartentafel            | Desk with drop-leaf & leather swivel navigator seat              |
| Keuken                  | Two part forward galley                                          |
| Aanrechtblad            | Corian Glacier White work surface with Alpi walnut moulded rails |
| Spoelbak                | roestvast staal Rectangular stainless steel sink                 |
| Kooktoestel             | ENO Bretagne 3-ring gas stove 19 L oven with gimbal stai         |
| Afzuigkap               | Miele / 230 Volt                                                 |
| Gasdetector             | ja                                                               |
| Koelkast                | Stainless steel fridge, 157l stainless steel fridge drawer, 75l  |
| Vriezer                 | 75 L deep freeze compartment with built-in 230 V ice maker       |
| Warmwatersysteem        | 220V + motor Quick, 60l                                          |
| Waterdruksysteem        | elektrisch Fresh and seawater for the kitchen, fresh for all     |
| Hand en/of voetpomp     | ja                                                               |
| Vaatwasser              | For 9 persons                                                    |
| Eigenaarshut            | Double bed, accessible from both sides 2,00 x 1,60m              |
| Kledingkast             | hangend/lades/legplanken                                         |
| Badkamer                | en suite                                                         |
| Toilet                  | In the bathroom                                                  |
| Toilet Systeem          | elektrisch                                                       |



# BENETEAU OCEANIS 60

|                             |                                                                                |
|-----------------------------|--------------------------------------------------------------------------------|
| <b>Wasbak</b>               | in de badkamer Work top in Corian Glacier White with Integrated polyester basi |
| <b>Douche</b>               | Separate shower with plexiglass door - Wooden seat                             |
| <b>Extra info</b>           | One full length mirror, LED indirect lighting                                  |
| <b>Gastenhut 1</b>          | Double bed 2,00 x 1,55m                                                        |
| <b>Kledingkast</b>          | hangend/lades/legplanken                                                       |
| <b>Badkamer</b>             | en suite                                                                       |
| <b>Toilet</b>               | In the bathroom                                                                |
| <b>Toilet systeem</b>       | handbediening                                                                  |
| <b>Wasbak</b>               | Glacier White corian work top with sink                                        |
| <b>Douche</b>               | Separate shower - one mixer tap                                                |
| <b>Extra info</b>           | LED indirect lighting                                                          |
| <b>Gastenhut 2</b>          | One Double bed, 2,00 x 1,55m                                                   |
| <b>Kleerkast</b>            | hangend/lades/legplanken                                                       |
| <b>Badkamer</b>             | gedeeld                                                                        |
| <b>Toilet</b>               | In the bathroom                                                                |
| <b>Toilet systeem</b>       | handbediening                                                                  |
| <b>Wasbak</b>               | Glacier White corian work top with sink and mixer tap                          |
| <b>Douche</b>               | Separate shower - one mixer tap                                                |
| <b>Was/droog combinatie</b> | Washer dryer: 8 kg for washing, 5 for dring (230V)                             |
| <b>Tender garage</b>        | With electrical Tender launching system                                        |

## MOTOR(EN)

|                              |                           |
|------------------------------|---------------------------|
| <b>Aantal motoren</b>        | 1                         |
| <b>Merk</b>                  | Yanmar                    |
| <b>Type</b>                  | 4LV                       |
| <b>Pk</b>                    | 150                       |
| <b>kW</b>                    | 110.40                    |
| <b>Brandstof</b>             | diesel                    |
| <b>Geïnstalleerd in jaar</b> | 2023                      |
| <b>Koelsysteem motor</b>     | indirecte warmtewisselaar |



|                             |                                                  |
|-----------------------------|--------------------------------------------------|
| <b>Aandrijving</b>          | schroefas                                        |
| <b>Motorbediening</b>       | elektrisch & bowden kabels                       |
| <b>Keerkoppeling</b>        | mechanisch                                       |
| <b>Boegschroef</b>          | Sleipner SRVP 100/ 185T 24 V tunnel bow thruster |
| <b>Hekschroef</b>           | Retractable stern thruster 24V                   |
| <b>Uitlaatsysteem</b>       | watergekoeld                                     |
| <b>Smering schroefas</b>    | water                                            |
| <b>Handlenspomp</b>         | ja                                               |
| <b>Elektrische lenspomp</b> | ja                                               |
| <b>Bilge alarm</b>          | ja                                               |
| <b>Generator</b>            | stille separator Cummins, 11 kVA 230 V / 50 Hz   |
| <b>Draaiuren generator</b>  | 46                                               |
| <b>Accu's</b>               | 24 Volt Power System                             |
| <b>Startaccu</b>            | 1 x 50 Ah                                        |
| <b>Lichtaccu</b>            | 8 x AGM 140Ah                                    |
| <b>Boegschroefaccu</b>      | 2x 12V/ 50 Ah                                    |
| <b>Accu monitor</b>         | Ship Control                                     |
| <b>Acculader</b>            | 24Volt / 100 Ah                                  |
| <b>Omvormer</b>             | 2000Watt                                         |
| <b>Walstroom</b>            | met kabel                                        |
| <b>Watermaker</b>           | Watermaker (100 l/h / 26 US Gal/h - 24/230V)     |

## NAVIGATIE

|                        |                                            |
|------------------------|--------------------------------------------|
| <b>Windmeetset</b>     | ja                                         |
| <b>Marifoon</b>        | Ray 91                                     |
| <b>Handmarifoon</b>    | RAY 90 wireless handheld                   |
| <b>Autopiloot</b>      | Raymarine P70s with S100 remote control    |
| <b>Plotter</b>         | 12" Axiom 2 Pro multi-function touchscreen |
| <b>AIS transponder</b> | ja                                         |
| <b>AIS transceiver</b> | 700 AIS                                    |



## UITRUSTING

|                            |                                                                  |
|----------------------------|------------------------------------------------------------------|
| <b>Kuipent</b>             | Full closure of the rigid bimini (2 sides + aft), Charcoal Grey  |
| <b>Bimini</b>              | Semi rigid Bimini cockpit top with LED lighting                  |
| <b>Kuipkussens</b>         | ja                                                               |
| <b>Kuiptafel</b>           | Two Electrical bases for the cockpit tables for use as sundeck   |
| <b>Zwemplatform</b>        | Fully opening transom, convertible to bathing platform, electric |
| <b>Zwemtrap</b>            | roestvast staal Three Folding access steps to the cockpit        |
| <b>Loopplank</b>           | Integrated hydraulic gangway, on port                            |
| <b>Dekdouche</b>           | ja                                                               |
| <b>Anker</b>               | Delta 40 kg, stainless steel                                     |
| <b>Ankerketting</b>        | 70m, 12mm,                                                       |
| <b>Ketting teller</b>      | ja                                                               |
| <b>Kaapstander</b>         | Retractable capstan (Bow)                                        |
| <b>Dekwasinstallatie</b>   | Salt and freshwater                                              |
| <b>Reddingsvlot</b>        | container                                                        |
| <b>Reddingsvlot (pers)</b> | 12                                                               |
| <b>Stootkussens</b>        | 4 x XL, 2 x L                                                    |
| <b>Landvasten</b>          | 4 x 18mm/ 15m, 2 x 18mm/ 15m                                     |
| <b>TV</b>                  | Two                                                              |
| <b>Radio</b>               | Fusion Apollo RA 670                                             |
| <b>Subwoofer</b>           | B&W                                                              |
| <b>Kuipspeakers</b>        | 2 x Fusion                                                       |
| <b>Speakers in salon</b>   | Fusion with subwoofer                                            |

## TUIGAGE

|                       |                                          |
|-----------------------|------------------------------------------|
| <b>Tuigage</b>        | sloep                                    |
| <b>Staad want</b>     | draad                                    |
| <b>Merk mast</b>      | Sparcraft                                |
| <b>Materiaal mast</b> | Aluminium mast with in-mast furling      |
| <b>Zalingen</b>       | Two Aft swept spreaders with LED- lights |
| <b>Grootzeil</b>      | 77,00m <sup>2</sup> , Hydranet           |



|                             |                                |
|-----------------------------|--------------------------------|
| <b>Genua</b>                | 75,00m <sup>2</sup> , Hydranet |
| <b>Genua rolreefsysteem</b> | Electric                       |
| <b>Giekneerhouder</b>       | mechanisch en talie            |
| <b>Genua schootlieren</b>   | Two H70.2STAEH- 24 Volt        |
| <b>Spinnaker lieren</b>     | Two H60.2Staeh- 24 Volt        |



# BENETEAU OCEANIS 60



# BENETEAU OCEANIS 60



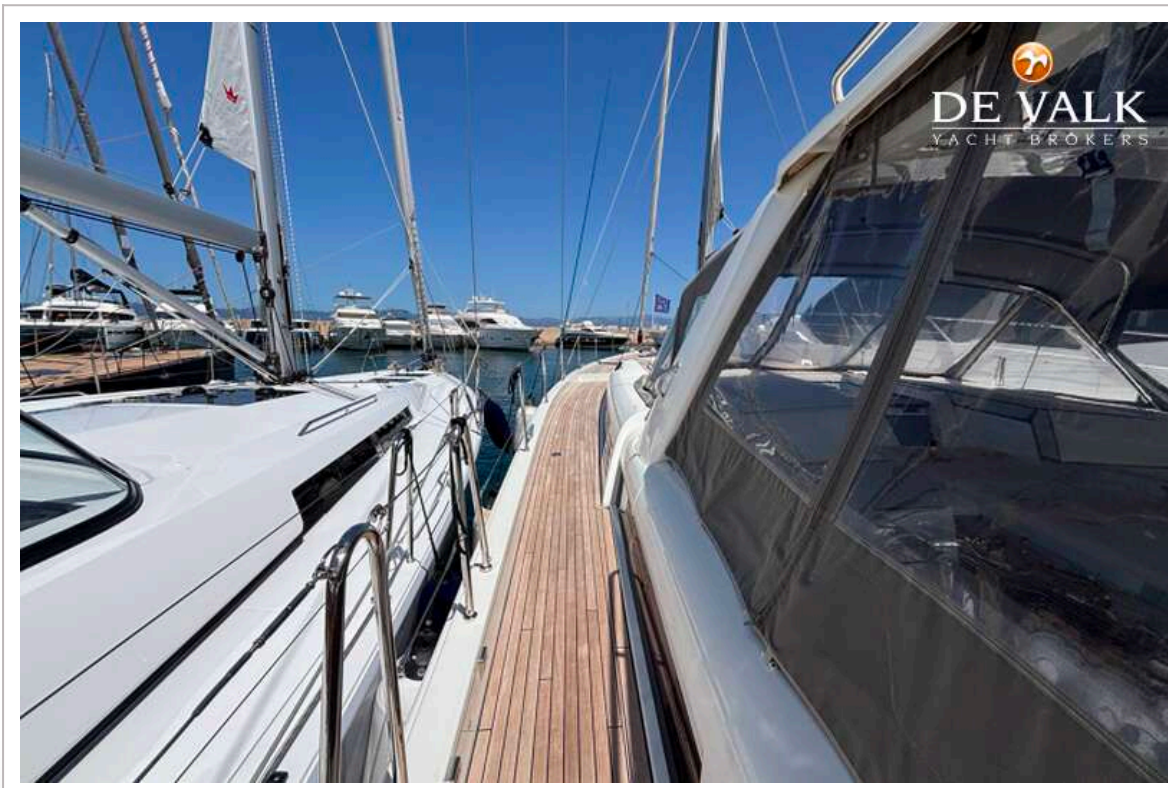
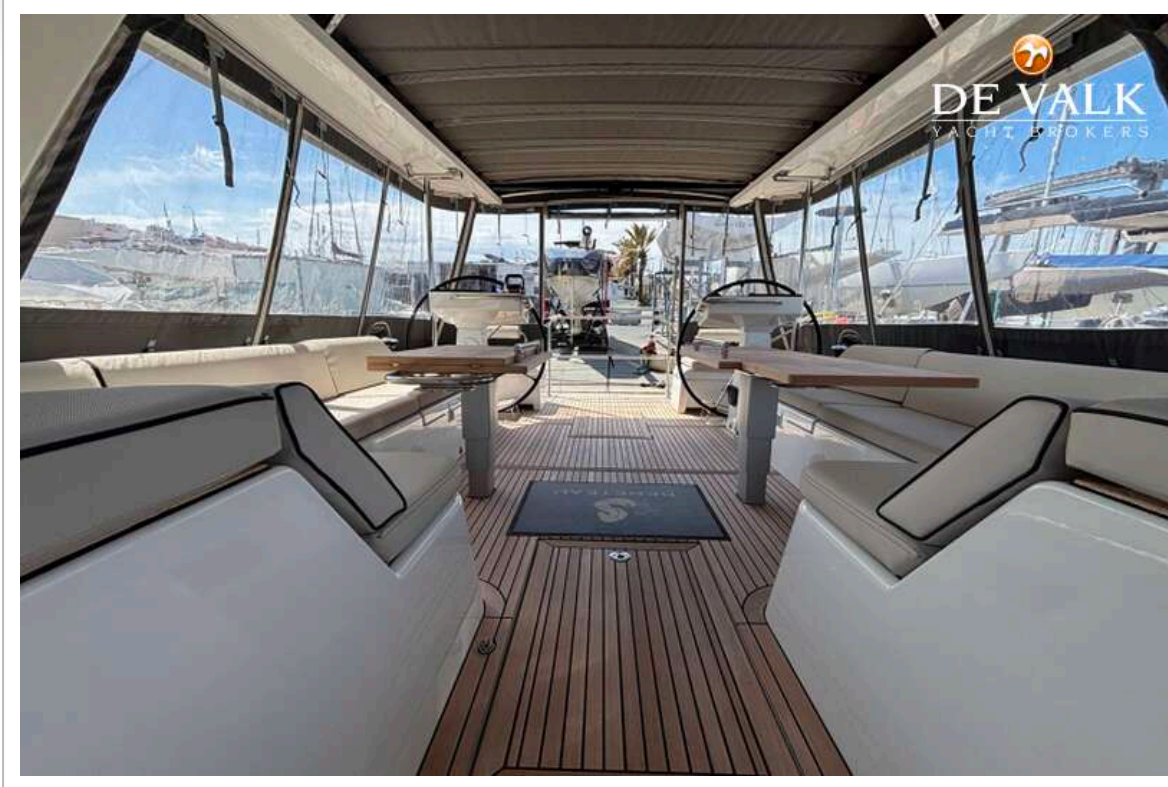
# BENETEAU OCEANIS 60



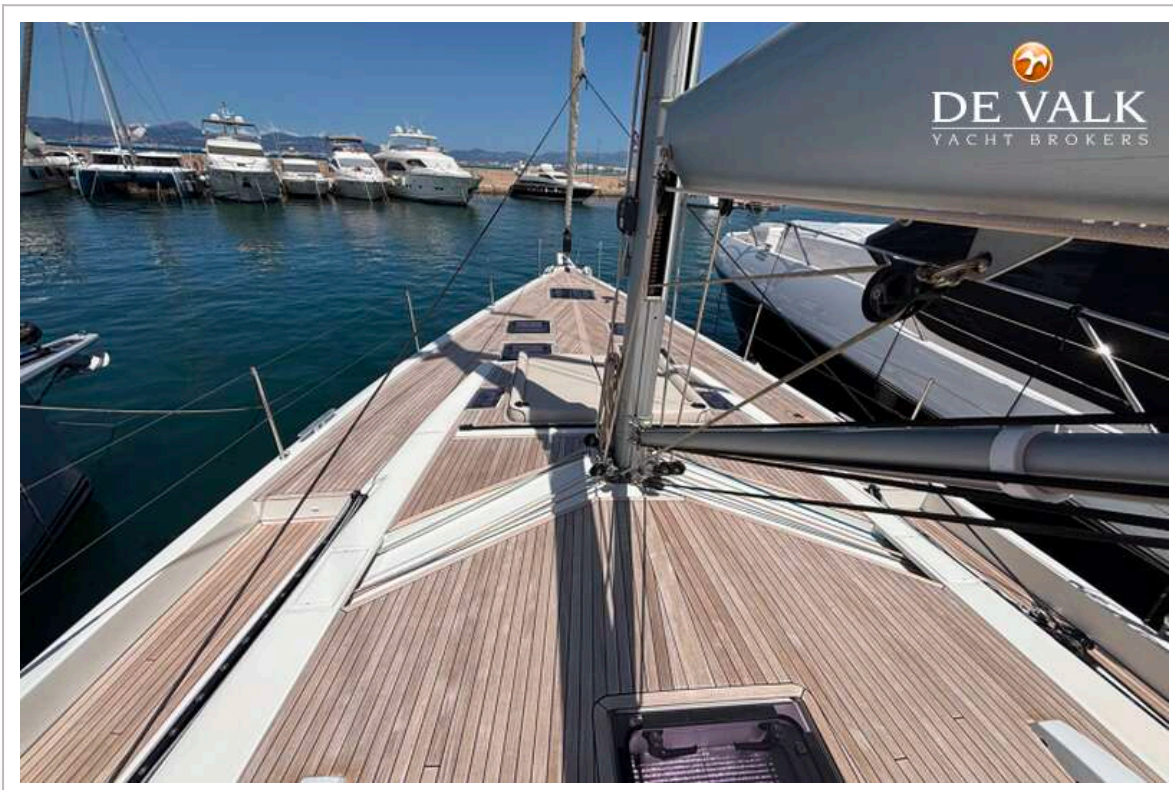
# BENETEAU OCEANIS 60



# BENETEAU OCEANIS 60



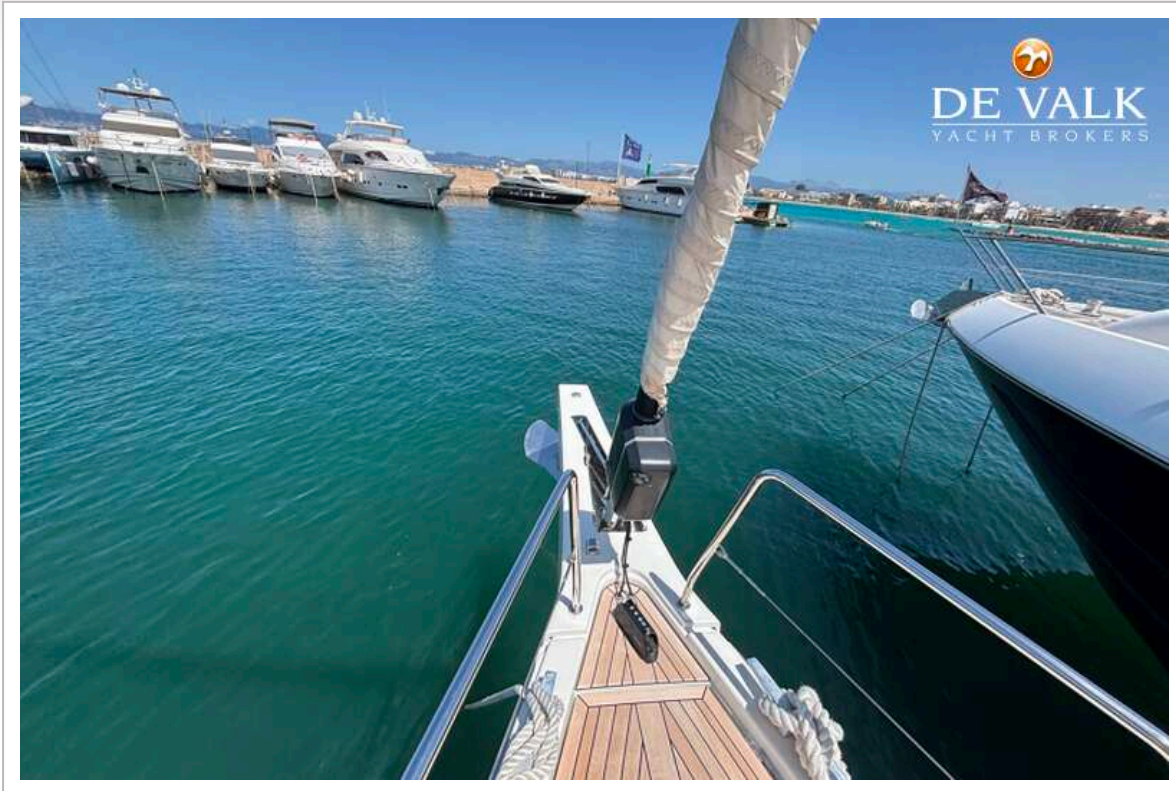
# BENETEAU OCEANIS 60



# BENETEAU OCEANIS 60



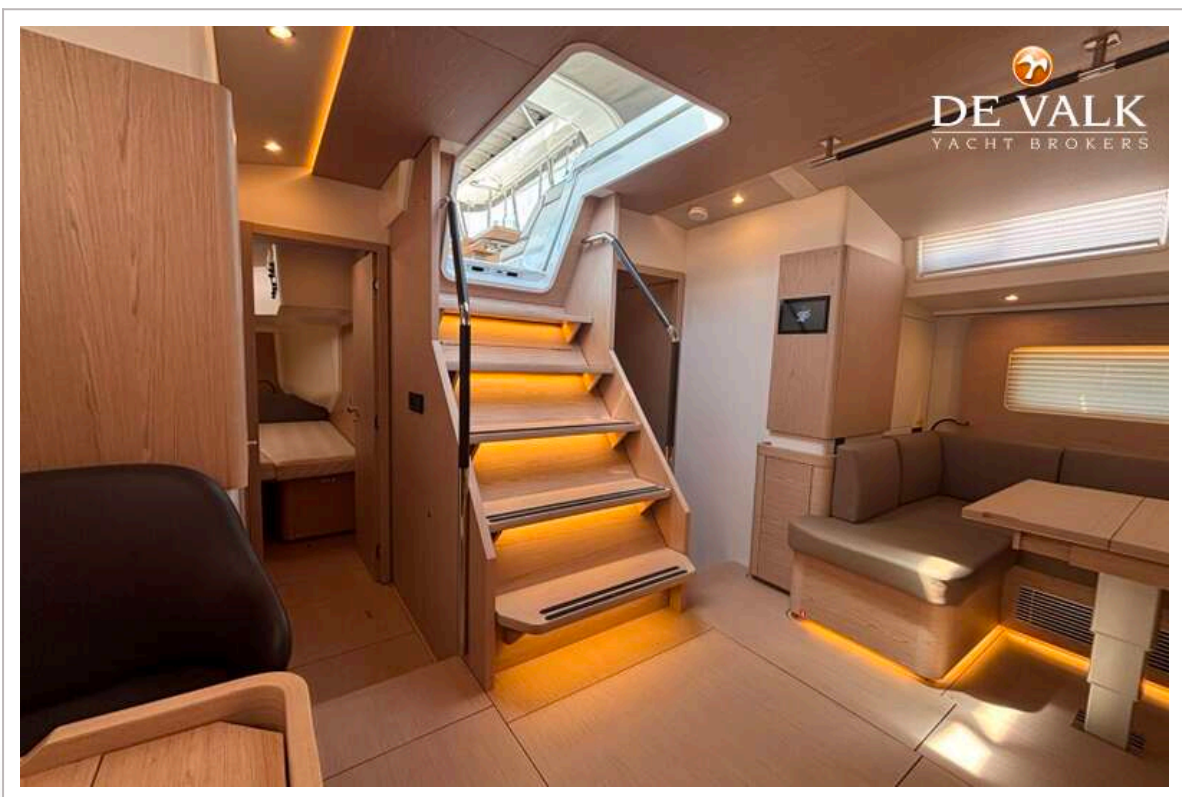
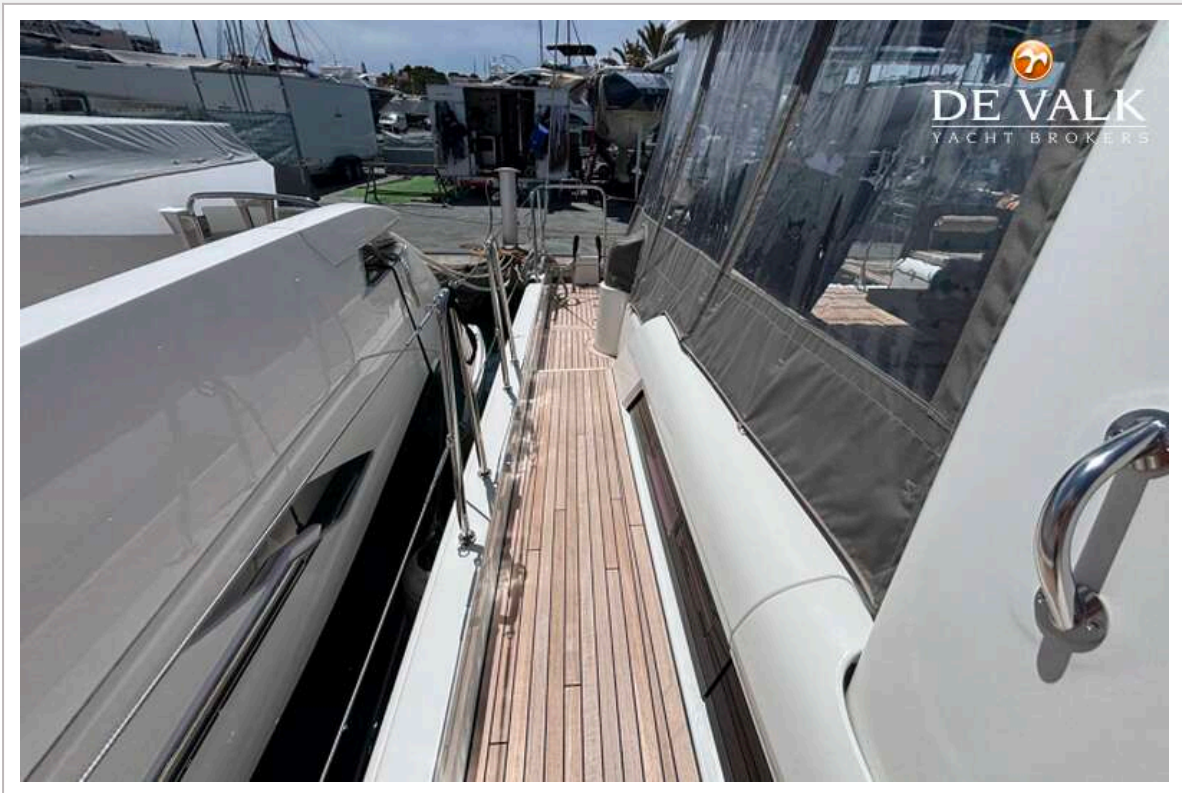
# BENETEAU OCEANIS 60



# BENETEAU OCEANIS 60



# BENETEAU OCEANIS 60



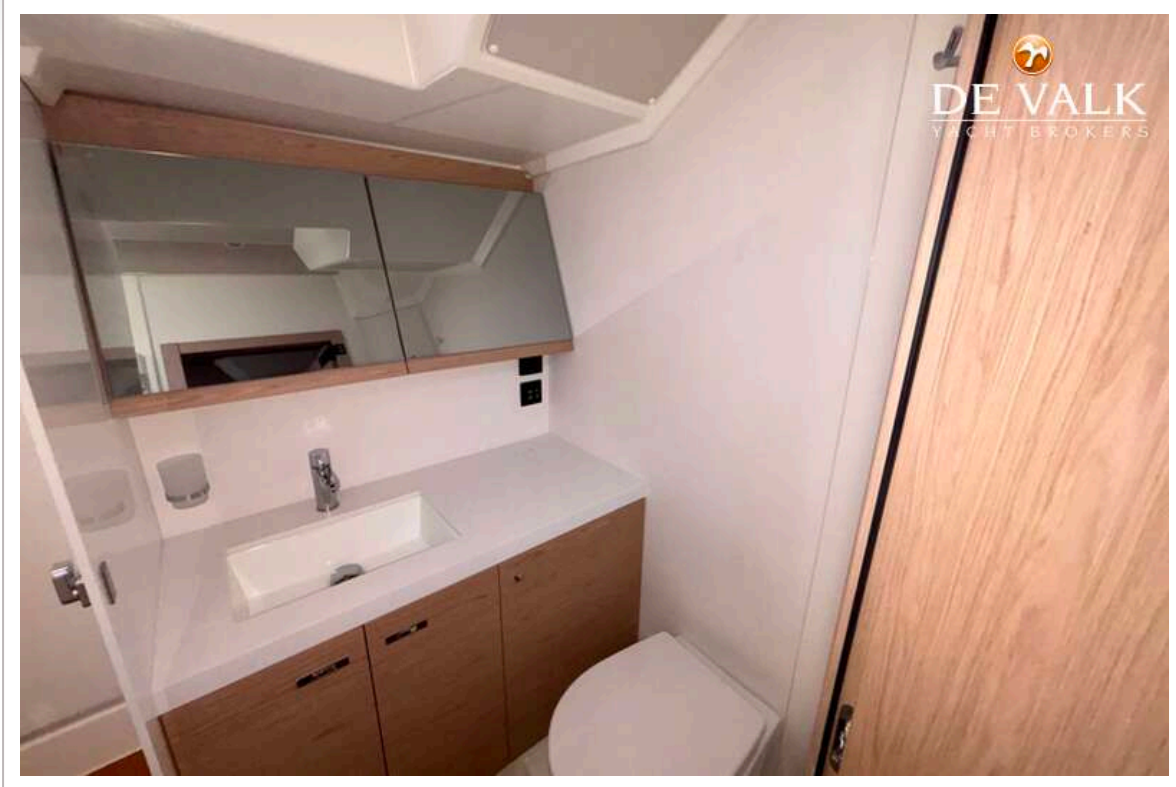
# BENETEAU OCEANIS 60



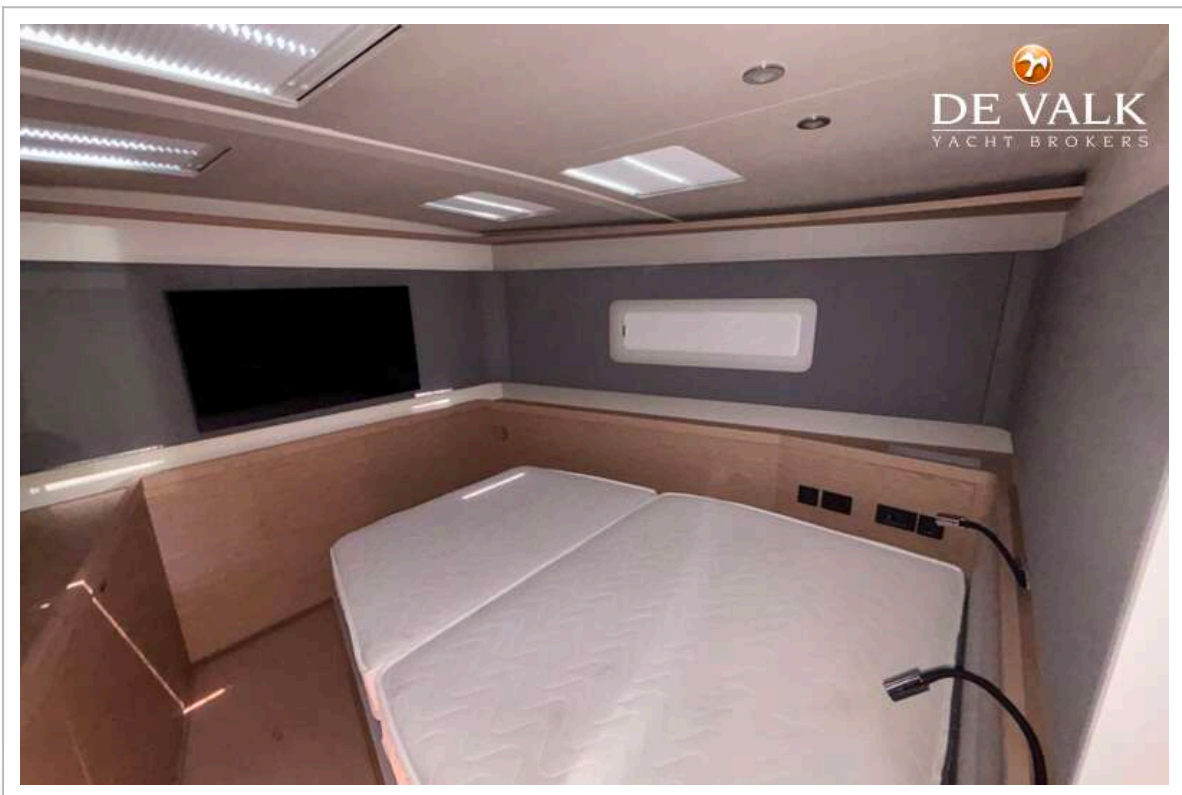
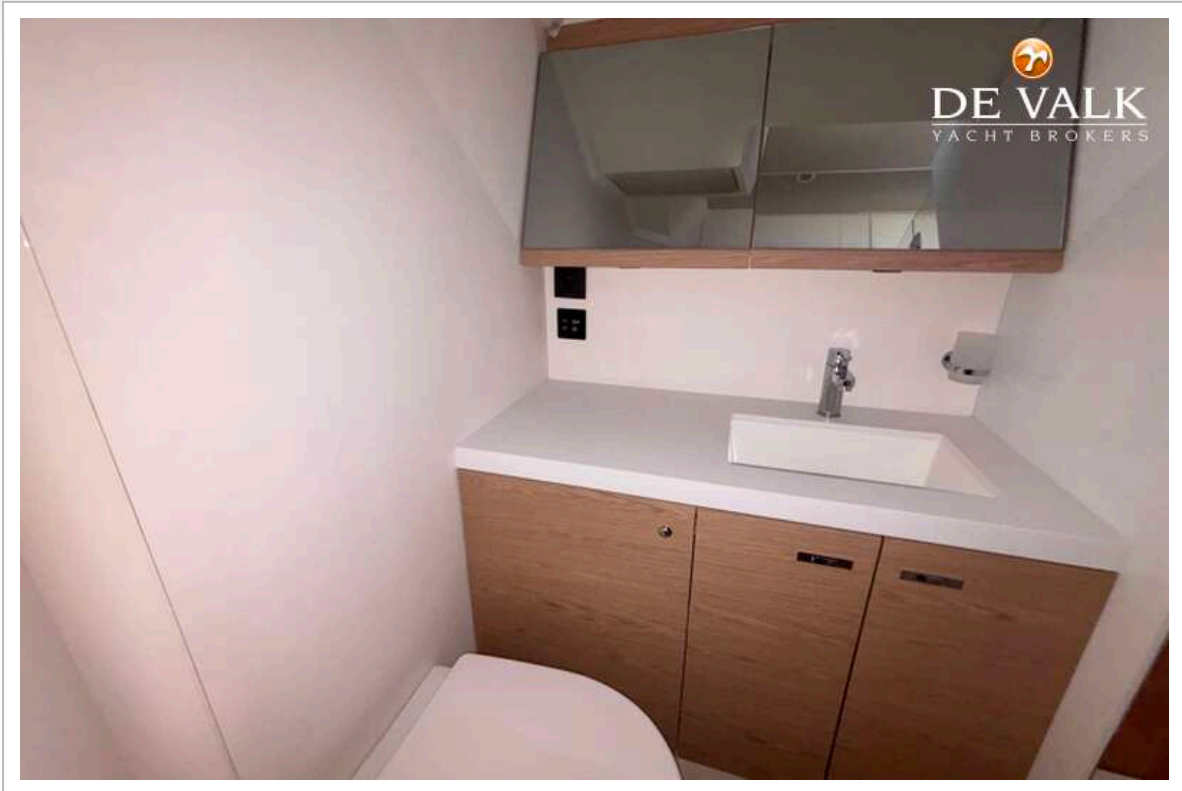
# BENETEAU OCEANIS 60



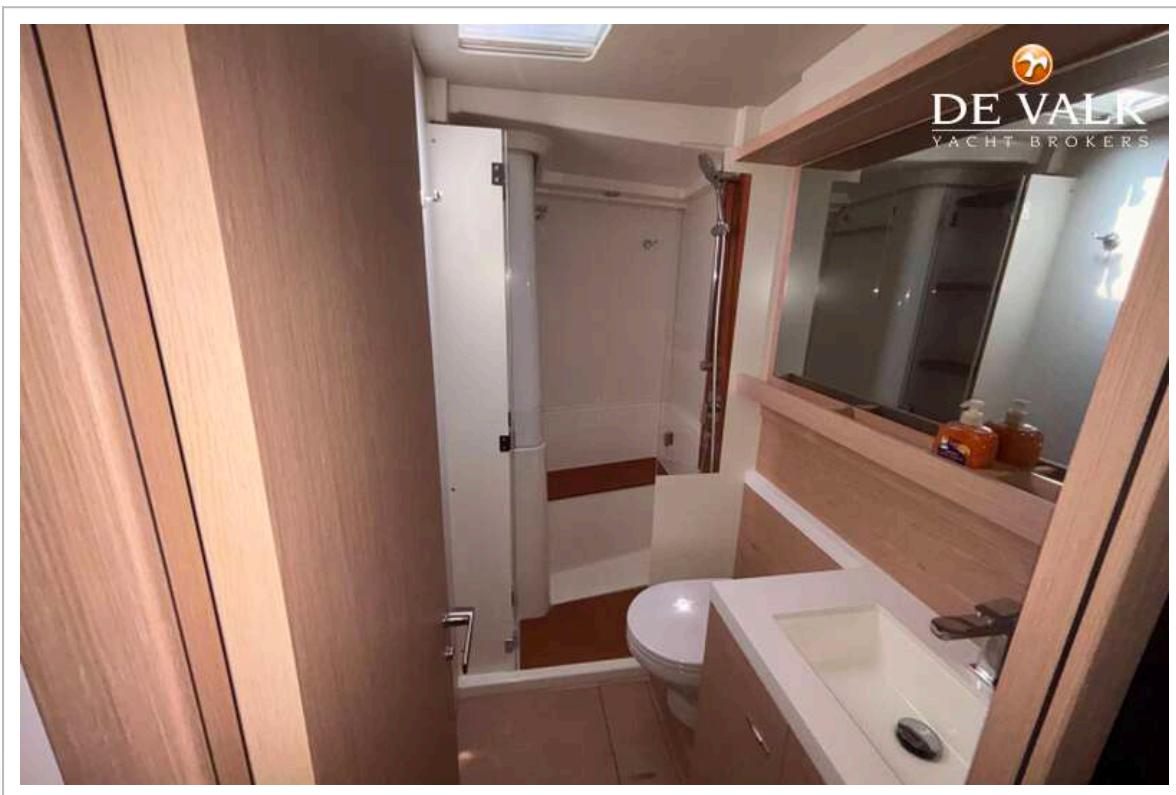
# BENETEAU OCEANIS 60



# BENETEAU OCEANIS 60



# BENETEAU OCEANIS 60



# BENETEAU OCEANIS 60

